

## Improvements to the Newell Highway at Grong Grong

Roads and Maritime Services is planning to move the Newell Highway to the west of Grong Grong to improve freight efficiency and road safety. The NSW Government has allocated \$500,000 in 2014-15 for project planning.

### Background

The Newell Highway is an important road link for freight between Queensland and Victoria and regional centres in Western NSW. About 600 heavy vehicles, 32 per cent of all traffic, travel the Newell Highway through Grong Grong daily.

Heavy vehicle traffic through Grong Grong is predicted to increase by 77 per cent to 1060 trucks per day by 2031.

The majority of the Newell Highway has a posted speed limit of 110km/h. The highway in Grong Grong is reduced to 60km/h and has a 90 degree bend at the intersection with Junee and Berrembed streets. The advisory speed for the bend is 35km/h.

There have been several truck roll overs at this intersection. On average there is one crash each year with the majority involving heavy vehicles.

The road design through Grong Grong reduces traffic efficiency and increases travel time, particularly for heavy vehicles. The highway needs upgrading to safely cater for heavy vehicles and to enable access for longer heavy vehicles, such as road trains carrying larger loads.

The proposal would also improve safety for pedestrians and cyclists and include suitable signposting to encourage motorists to stop and rest in town.

### Previous work on the project

During 2011 Roads and Maritime asked for community comment on four potential design options to move the Newell Highway to the outskirts of Grong Grong.

Road designs closer to town were investigated however these options either kept the speed limit at 60km/h, cut through areas of woodland or directly impacted or were close to existing homes.

Improvements to the intersection in town would likely encourage vehicles to travel faster, especially at night. This would not reduce heavy vehicle roll over crashes.

### The project

The project involves construction of a 2.4km long section of highway with a 110km/h design speed to the west of Grong Grong. The highway would remain two-lane, with turning lanes at intersections to provide access into Grong Grong.

The project would include maintenance work on the existing highway before handing over the road to Narrandera Shire Council.

Proposals for town improvements and a signposting scheme to attract passing traffic into Grong Grong will be developed.

## Project objectives

- Providing consistent travel speeds and times for Newell Highway traffic.
- Improving road safety and reducing the risk of incidents between local and through traffic and between vehicles, pedestrians and cyclists.
- Enabling access for longer heavy vehicles, such as road trains.
- Maintaining suitable access to Grong Grong to support social and economic activity in the town.

## Benefits

- Improving road safety.
- Improving safety for pedestrians and cyclists.
- Reducing the cost of transporting goods on trucks.
- Reducing traffic noise in Grong Grong.
- Consistent travel speeds.
- Reducing travel time.
- Provision for growth in freight and other traffic that is forecast to occur over the next 20 years.

## Community consultation

Community and stakeholder engagement is an essential part of developing this project. The project team is committed to involving the community and will provide regular updates and opportunities to provide feedback.

### Your feedback

Roads and Maritime wants your feedback on the proposed accesses into town and ways to attract drivers off the highway. This feedback will be used to help finalise the concept design and prepare a signposting strategy for the project. Feedback on town improvements will form part of the environmental assessment process.

Roads and Maritime will also ask stakeholders and the community how they want to receive information as the project progresses.

## Community drop in sessions and information night

Roads and Maritime will hold two community drop in sessions and an information night to provide an opportunity to ask the project team questions.

### Drop in sessions

Wednesday 15 October 2014, 11am to 6pm  
Grong Grong Hall

Thursday 16 October 2014, 8am to 3pm  
Grong Grong Hall

### Community information night

Wednesday 15 October 2014, 7pm to 9pm  
Grong Grong Hall

A presentation will be given by the project team followed by community questions and comments.

Come along and meet the project team, learn more about the project and how you can provide feedback.

### Survey

A survey will be posted to every household and business in Grong Grong after the drop in sessions and community information night to ensure everyone has an opportunity to provide comment and feedback on this project. The survey has a few questions about your views on accesses into Grong Grong and the benefits and impacts of this project.

The survey can also be filled out and submitted on the project's website.

## What is happening now?

Roads and Maritime is currently talking to key stakeholders and the community about this project and how feedback can be provided.

Further survey, testing of soil and rock and environmental investigations are being carried out to help with the road design.

## What is happening next?

After feedback is received and investigations complete, the concept design will be finalised.

The concept design will be used to finish the environmental assessment.

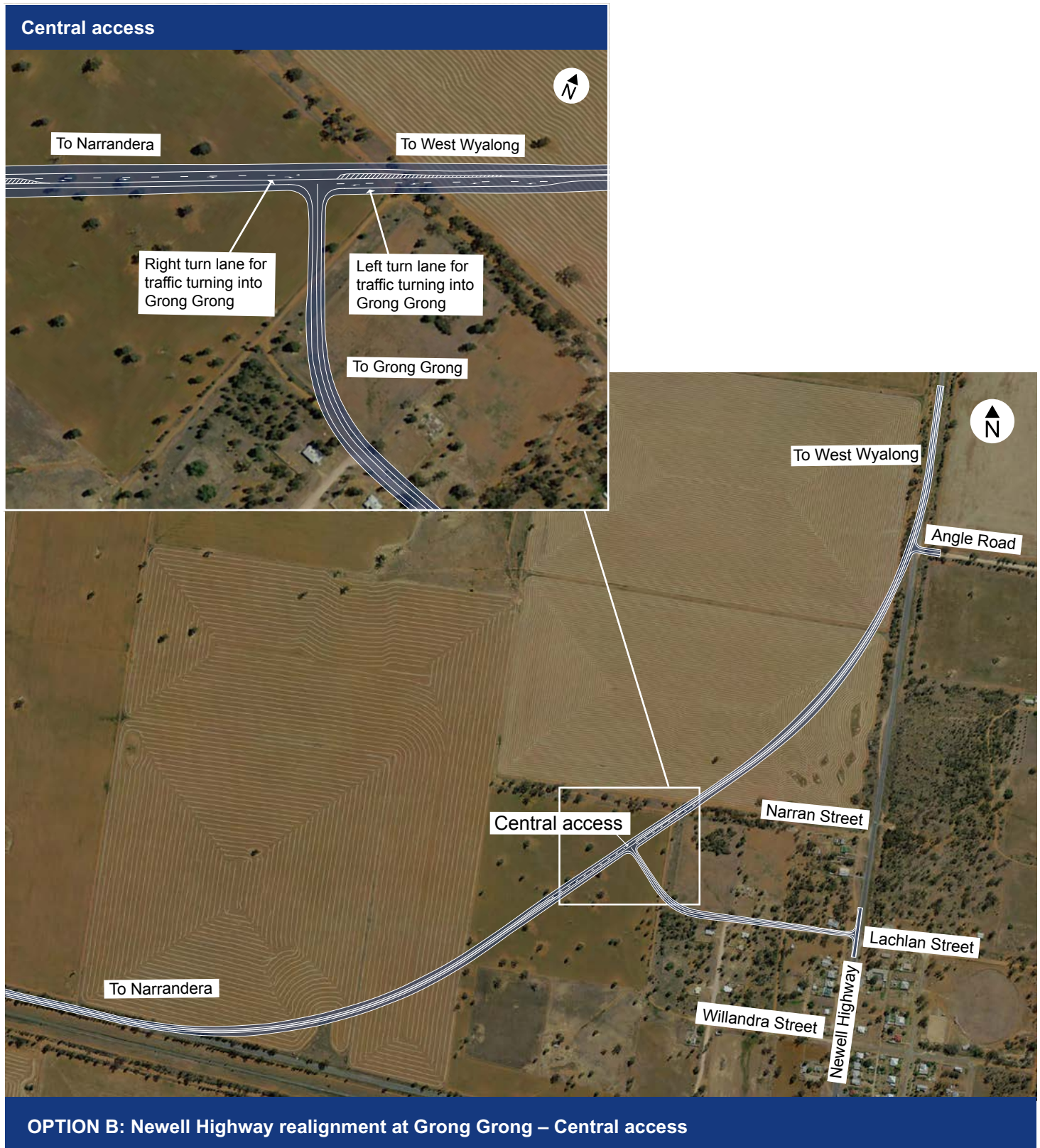
## Access options

Using the feedback received about accesses into Grong Grong during consultation in 2011, Roads and Maritime has developed two options:

- A north and west access (option A).
- A central access (option B).

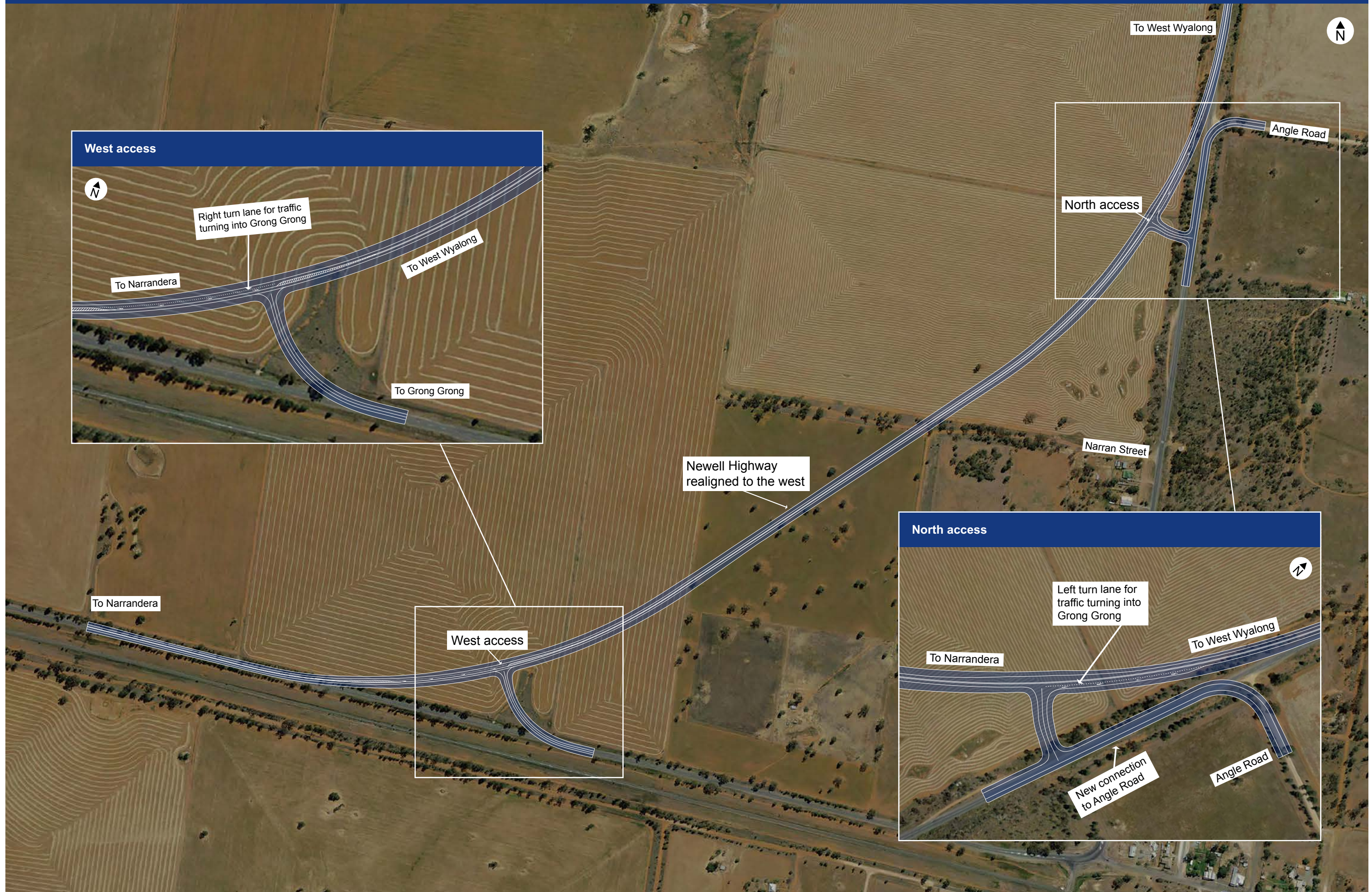
These accesses would have turning lanes for traffic wanting to come off the highway into Grong Grong, providing easy access into town. The north access option provides a new connection to Angle Road.

We want your feedback on these options to help finalise the concept design.





OPTION A: Newell Highway realignment at Grong Grong – North and West access





# The planning and decision making process



## Further information

For more information please contact the Senior Project Development Officer, **Dean Howard**

Roads and Maritime Services  
PO Box 484, Wagga Wagga NSW 2650  
T **6938 1121** (Monday to Friday 8.30am to 5pm)  
E **Wagga.Wagga.Regional.Office@rms.nsw.gov.au**

Information is also available on the Roads and Maritime Services website **[www.rms.nsw.gov.au](http://www.rms.nsw.gov.au)**

### © Roads and Maritime Services

Privacy: Your personal information in correspondence is collected for the sole purpose of assisting in the assessment of the proposal. All information received, including names and addresses of respondents, may be published in subsequent assessment documents unless a clear indication is given in the correspondence that such information is not to be published. Otherwise Roads and Maritime will only disclose your personal information, without your consent, if authorised by law. Your personal information will be held by Roads and Maritime at 1 Simmons Street, Wagga Wagga NSW 2650. You have the right to access and correct the information if you believe that it is incorrect.

### For further enquiries

Please contact the Roads and Maritime Services South West Regional Office:

T 13 17 82 | E [wagga.wagga.regional.office@rms.nsw.gov.au](mailto:wagga.wagga.regional.office@rms.nsw.gov.au)

More information is available at **[rms.nsw.gov.au/roadprojects](http://rms.nsw.gov.au/roadprojects)**