

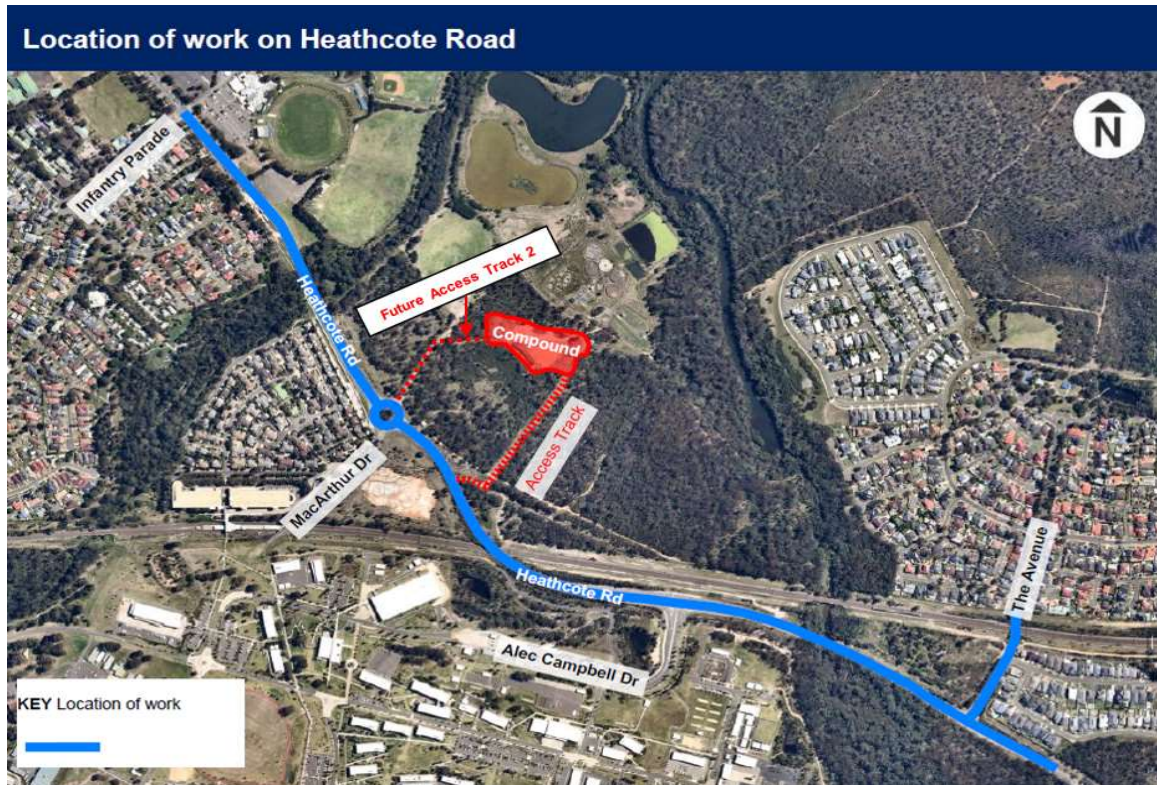


Start of work on Heathcote Road upgrade from Tuesday 8 March 2022

The Australian and NSW Governments are upgrading Heathcote Road between Infantry Parade, Holsworthy and The Avenue, Voyager Point to help reduce congestion, improve road safety and provide more reliable journeys for all road users.

Key benefits of the upgrade will include:

- Reduce traffic congestion
- Increase road capacity for current and predicted traffic volumes
- Improve road safety
- More reliable travel times
- Improve pedestrian and cyclist connections to Holsworthy Train Station and Hammondville Park
- Improve freight access and efficiency.



Construction will be delivered by Ertech Pty Ltd. From Tuesday 8 March 2022, weather permitting, we will start:

- removing trees, shrubs and other vegetation along Heathcote Road between Infantry Parade, Holsworthy and The Avenue, Voyager Point
- installing traffic controls such as barriers, signs and line-marking
- survey and utility investigations
- setting up the site compound and ancillary facilities.

What are we doing?

Our standard working hours on the project will be between 7am and 6pm from Monday to Friday and between 8am and 1pm on Saturday. However, some of our work will be carried out at night to ensure the safety of motorists and workers and minimise the impact on the road network. Out of hours work will be carried out between 8pm and 5am from Monday to Friday. There will be up to four shifts of night work per week, but only two consecutive nights in the same area. Residents will be notified in advance.

How will the work affect you?

The work will involve some use of noisy machinery. We will make every effort to minimise noise where possible by staging the work along different parts of the work zone to minimise disruption in the same area and turning off vehicles when not in use. We will also aim to complete our noisy activities before midnight. We will provide updated information about the work schedule as work progresses and more construction activities take place.

Traffic changes

There will be some temporary traffic changes to ensure the work zone is safe. Partial lane closures and a reduced 40km/h speed limit will be in place. Please keep to speed limits and follow the direction of traffic controllers and signs. For the latest traffic updates, you can call 132 701, visit livetraffic.com or download the Live Traffic NSW App. Thank you for your patience during this important work.

If you have an enquiry or a complaint or would like to know more about the Heathcote Road upgrade project please contact our project team:



1800 749 119



heathcoteroadupgrade@ertech.com.au



transport.nsw.gov.au



If you need help understanding this information, please contact the Translating and Interpreting Service on **131 450** and ask them to call us on 1800 749 119