

Continuation of work on Heathcote Road

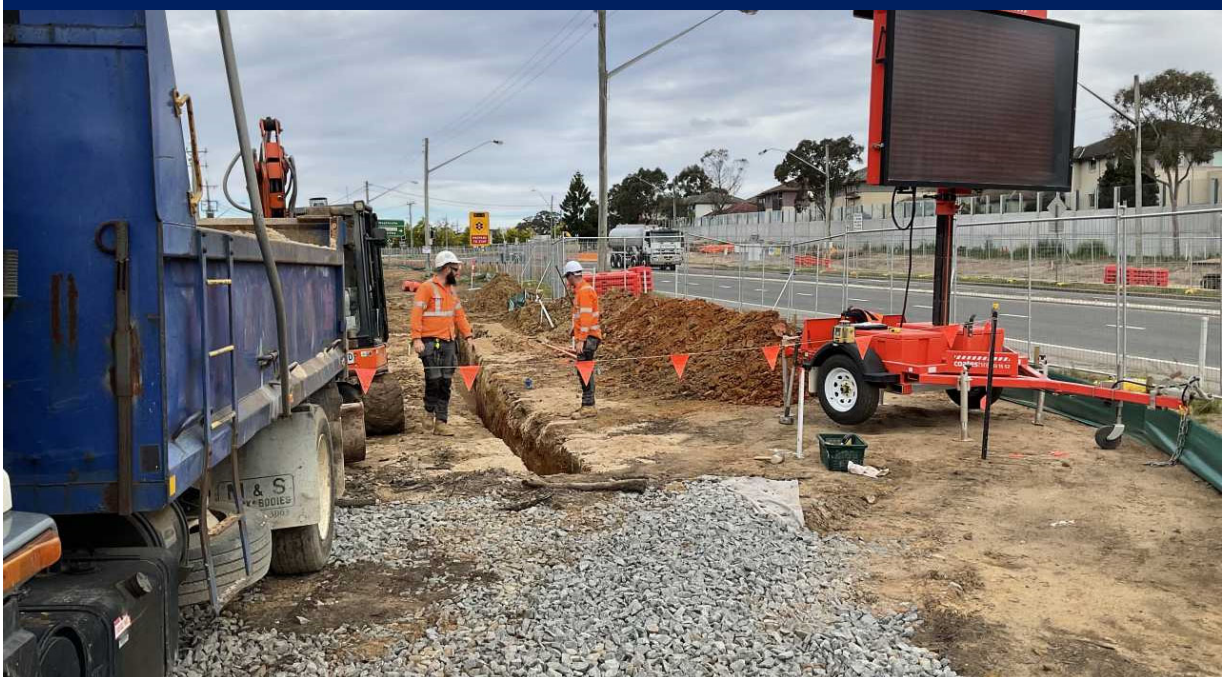
Transport for NSW | September 2022

The Australian and NSW Governments are upgrading Heathcote Road between Infantry Parade, Holsworthy, and The Avenue, Voyager Point to help reduce congestion, improve road safety, and provide more reliable journeys for all road users.

Work is continuing on the Heathcote Road Upgrade and over the following six weeks and will include:

- relocation of existing speed limit signs near the Avenue, 250m to the East.
- undertaking utility adjustment works including potholing, trenching and relocations
- removing existing asphalt and concrete pavement, medians, and kerbs
- constructing temporary pavements at various locations over the 2.2 km of Heathcote Road.
- piling, demolition, and other works associated with the road bridge over the T8 Airport and South Line
- piling works associated with the utility bridge over Harris Creek
- general earthworks.

Utility installation along Heathcote Road – July 2022



Our work schedule

Our standard work hours are **Monday to Friday** from **7am to 6pm** and **Saturday** from **8am to 1pm**. No work will take place on public holidays.

Out of hours work

Night work is required between **6pm Thursday 1 September** and **7am Saturday 1 October**. We will work over four-night shifts per week but only two consecutive nights in the same area, weather permitting. Construction hours are between **6pm to 7am Monday to Sunday**

How this work will affect you

We need to carry out this work at night to minimise traffic disruption and reduce safety risks to the workers and road users.

The **out of hours work** will be noisy at times, however we will make every effort to minimise the impact for residents by carrying out noisier work before midnight, turning off machinery and vehicles when not in use and directing lights away from properties where possible. Where these impacts are the greatest, residents will be contacted directly about respite offers where appropriate.

Equipment used may include generators, excavators, pilling rig, rollers, street sweeper, trucks, concrete trucks and pumps, powered hand tools, underbore machine, water cart, and lighting towers.

Contact us

If you have any questions or would like more information regarding this work, please contact our project team:



1800 749 119



heathcoteroadupgrade@ertech.com.au



nswroads.work/heathcoteroad



If you need help understanding this information, please contact the Translating and Interpreting Service on **131 450** and ask them to call us on **1800 749 119**