

## Work continuing on Henry Lawson Drive upgrade, Georges Hall

Community Update | September 2022

Transport for NSW are continuing work to upgrade Henry Lawson Drive between Beale Street and Rabaul Road, to ease congestion and improve journey reliability on this key road corridor.

The upgrade on Henry Lawson Drive includes:

- an additional southbound lane between Beale Street and Rabaul Road
- a new pedestrian footpath between Rabaul Road and Haig Avenue
- a permanent ban of the right turn from Henry Lawson Drive onto Rabaul Road.

The project is expected to be completed in late 2022.

### Work completed

From **June to August 2022**, we have completed:

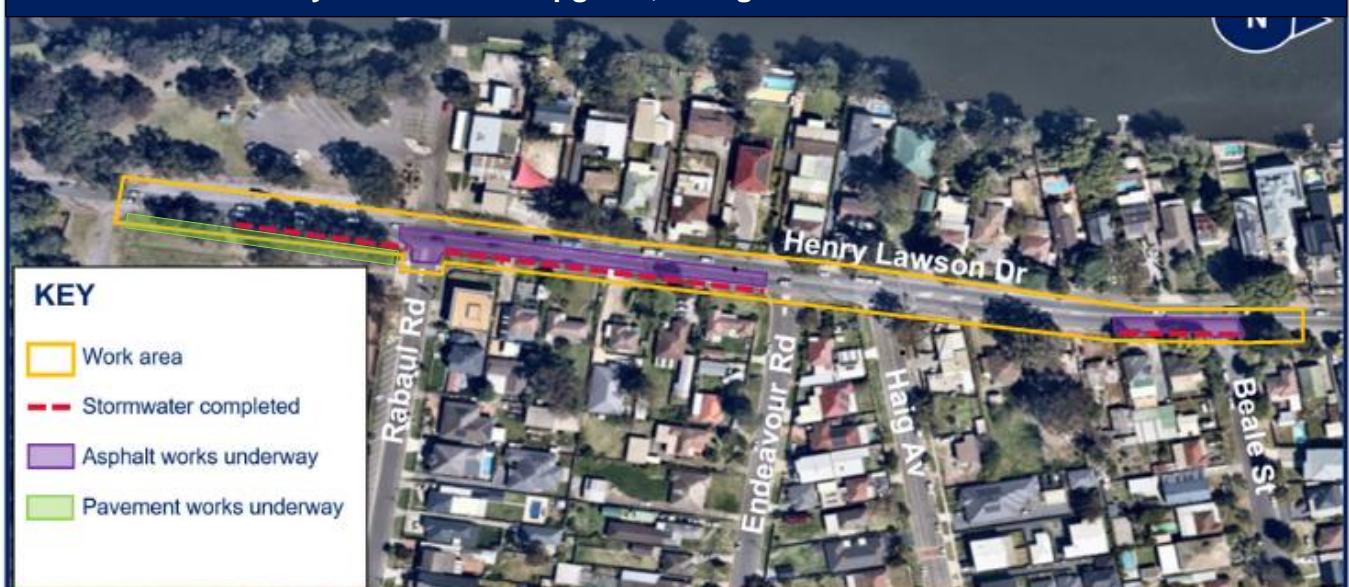
- works at Rabaul Road intersection
- kerbs, stormwater and pavement works from Rabaul Road to Beale Street
- asphalt works from Rabaul Road to Beale Street
- installation of stormwater pipe headwall at Georges River.

### Work coming up

From **Thursday 1 September** until **Wednesday 30 November 2022**, we will continue work on:

- stormwater pipes installation south of Rabaul Road
- pedestrian footpath between Rabaul Road and Haig Avenue
- final asphalt works, signs and road markings
- removal of the site offices in Kentucky Reserve.

### Location of the Henry Lawson Drive upgrade, Georges Hall



**Note:** Map not to scale. Indicative only.

## Our work hours

We plan to work for approximately **30 night shifts** and **60 day shifts** until the end of November 2022. We will work up to **five nights** and **six days** a week, weather and worksite conditions permitting. Our work hours are:

- day time - from **7am** to **6pm**, **Monday to Friday** and from **8am** to **1pm** on **Saturdays**
- night time - **any day** from **8pm** to **5am** the next day, in no more than 5 night blocks.

There will be noise and disruptions associated with our work and we will work with the community to reduce any disturbance. This includes measures to reduce the effect of noisier tasks (such as jackhammering and concrete saw cutting) and completing these tasks before midnight.

## Traffic and pedestrian path changes

There will be temporary lane closures to ensure the safety of road users and workers. There may also be a partial closure of footpath at our work area and alternative path and signs will be in place. Please keep to speed limits and follow signs and traffic controller directions.

For the latest traffic updates, call 132 701, visit [livetraffic.com](http://livetraffic.com) or download the Live Traffic NSW app.

## Other work in the area

The NSW Government is upgrading Henry Lawson Drive between Hume Highway and the M5 Motorway in stages to minimise impact to road users and the surrounding community. In addition to upgrades in Georges Hall, we are upgrading Henry Lawson Drive between Tower Road and Auld Avenue, Bankstown Aerodrome/ Milperra (Stage 1A), and between Auld Avenue and the M5 Motorway, Milperra (Stage 1B).

Visit [www.nswroads.work/hld](http://www.nswroads.work/hld) for more information on these projects.

## Contact us

If you have any questions or would like more on the Henry Lawson Drive upgrade, Georges Hall project please contact our project team:



1800 033 980



Unit 3/11-21 Underwood Rd, Homebush NSW 2140



[421-HLD-GeorgesHall@burtoncontractors.com.au](mailto:421-HLD-GeorgesHall@burtoncontractors.com.au)



[www.nswroads.work/hldgh](http://www.nswroads.work/hldgh)

If you need help understanding this information, please contact the Translating and Interpreting Service on **131 450** and ask them to call us on 1800 033 980.

