



- | | | |
|--|--|-----------------------------------|
| Construction area | Stormwater drainage system |) Minor outlet (TfNSW) |
| Hunter Wetlands National Park | — Existing (TfNSW) |) Minor outlet - modelled (TfNSW) |
| Coastal Wetlands | — Proposed | |
| | — To be removed | |
| | Basin | |

0 50 100 m

1:4,000 at A4
GDA94 MGA56

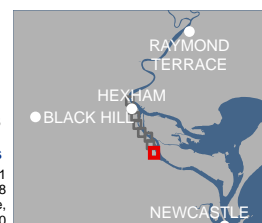
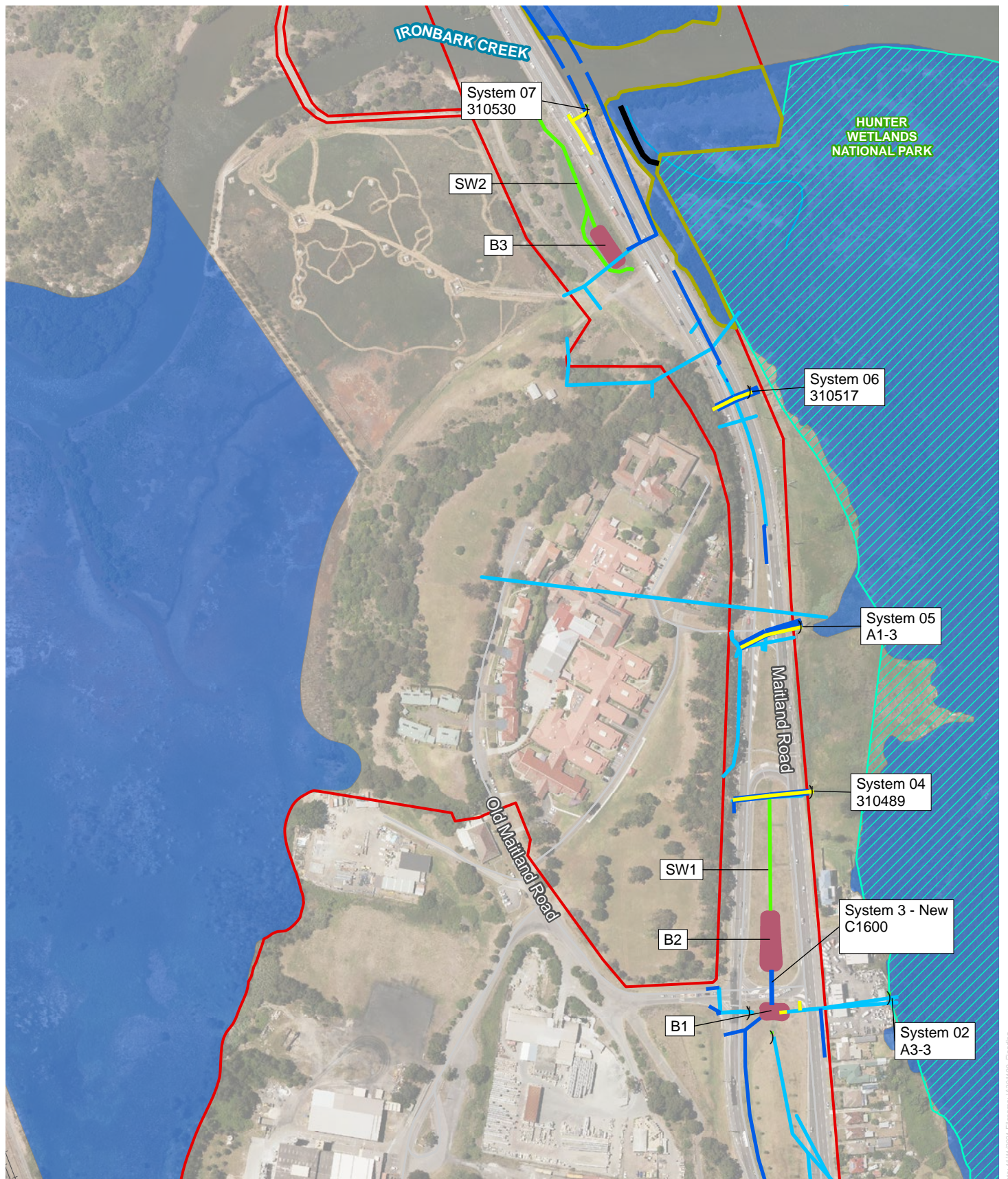


Figure B.1 Drainage features
Hexham Straight Widening



- Construction area
- EIS area
- Railway
- Waterway
- Hunter Wetlands National Park
- Coastal Wetlands

- Stormwater drainage system**
- Existing (TfNSW)
 - Proposed
 - To be removed
 - Open channel
- Water quality controls**
- Proposed grassed swale
 - Basin

-) Minor outlet (TfNSW)
-) Minor outlet - modelled (TfNSW)

0 50 100 m

1:4,000 at A4
GDA94 MGA56

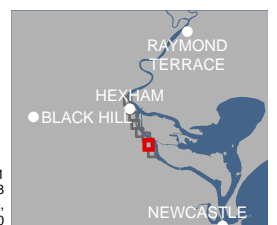


Figure B.2 Drainage features
Hexham Straight Widening

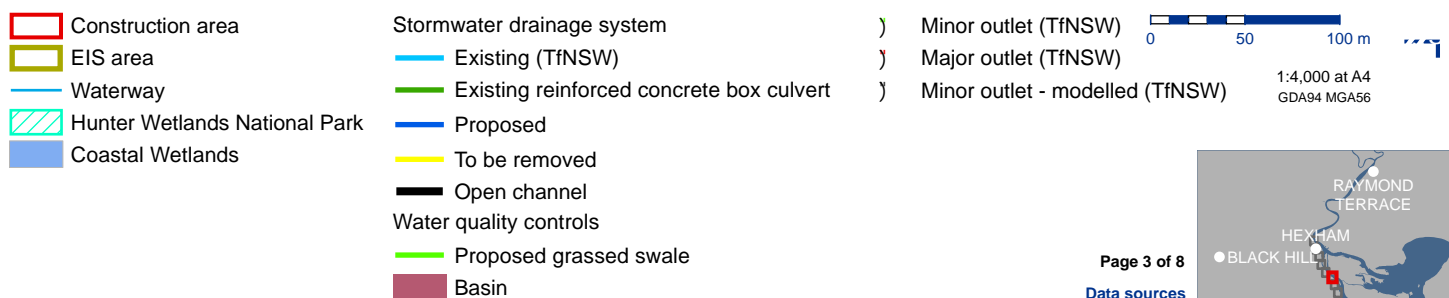
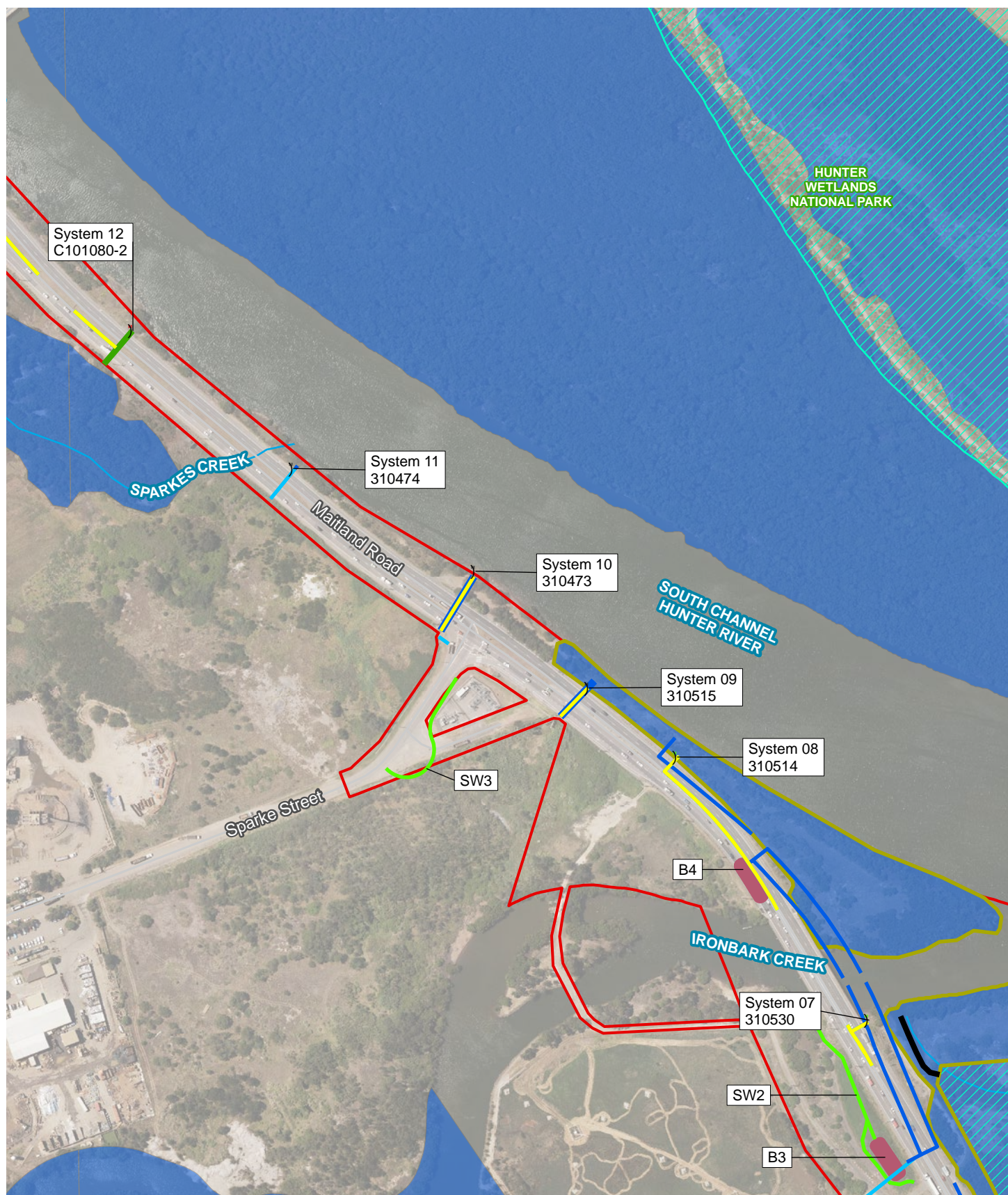


Figure B.3 Drainage features
Hexham Straight Widening

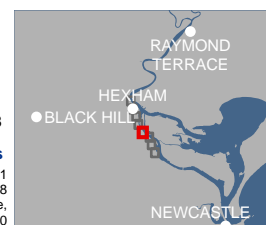
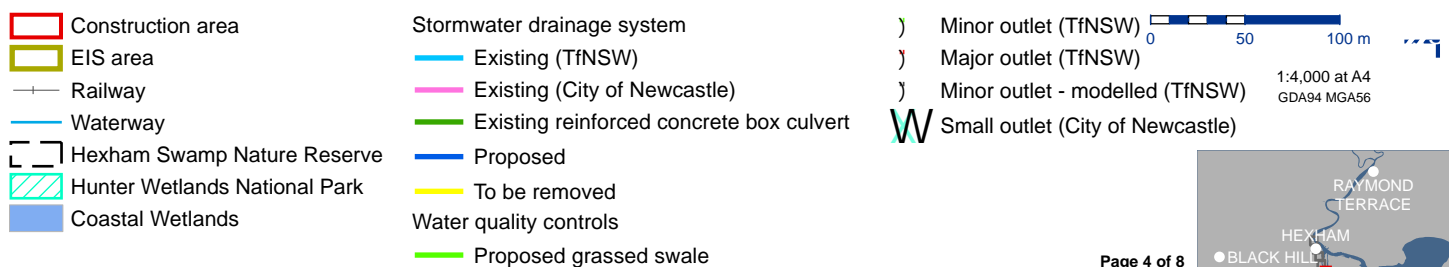
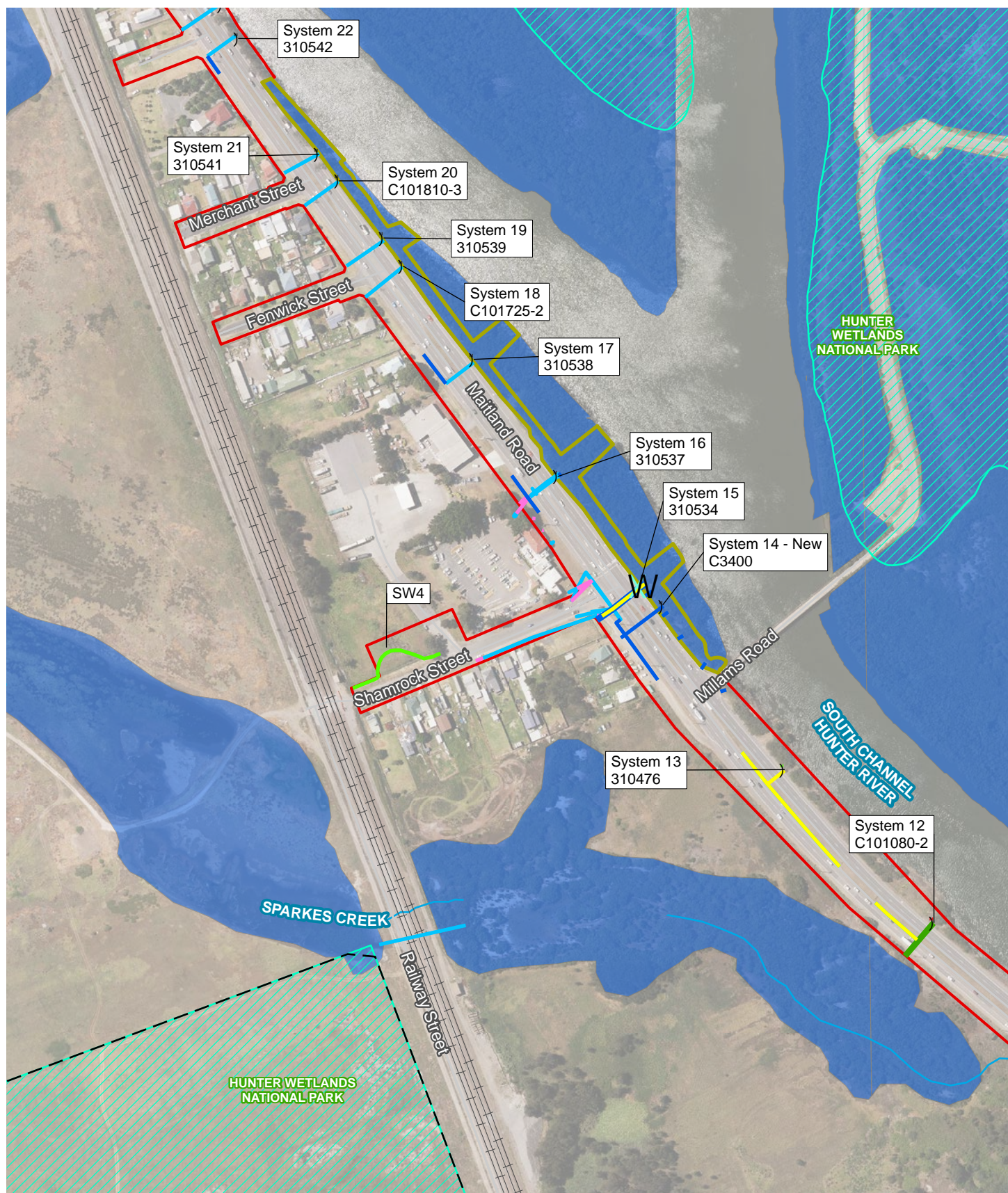


Figure B.4 Drainage features
Hexham Straight Widening

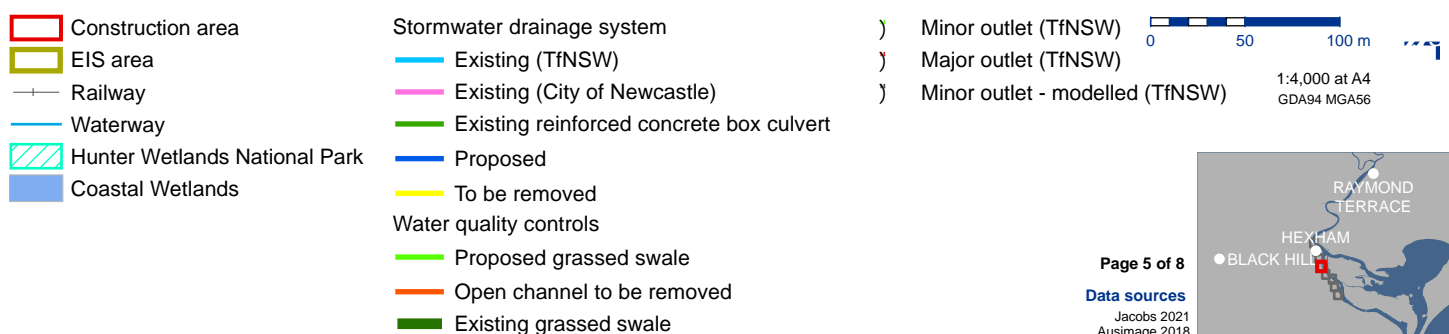
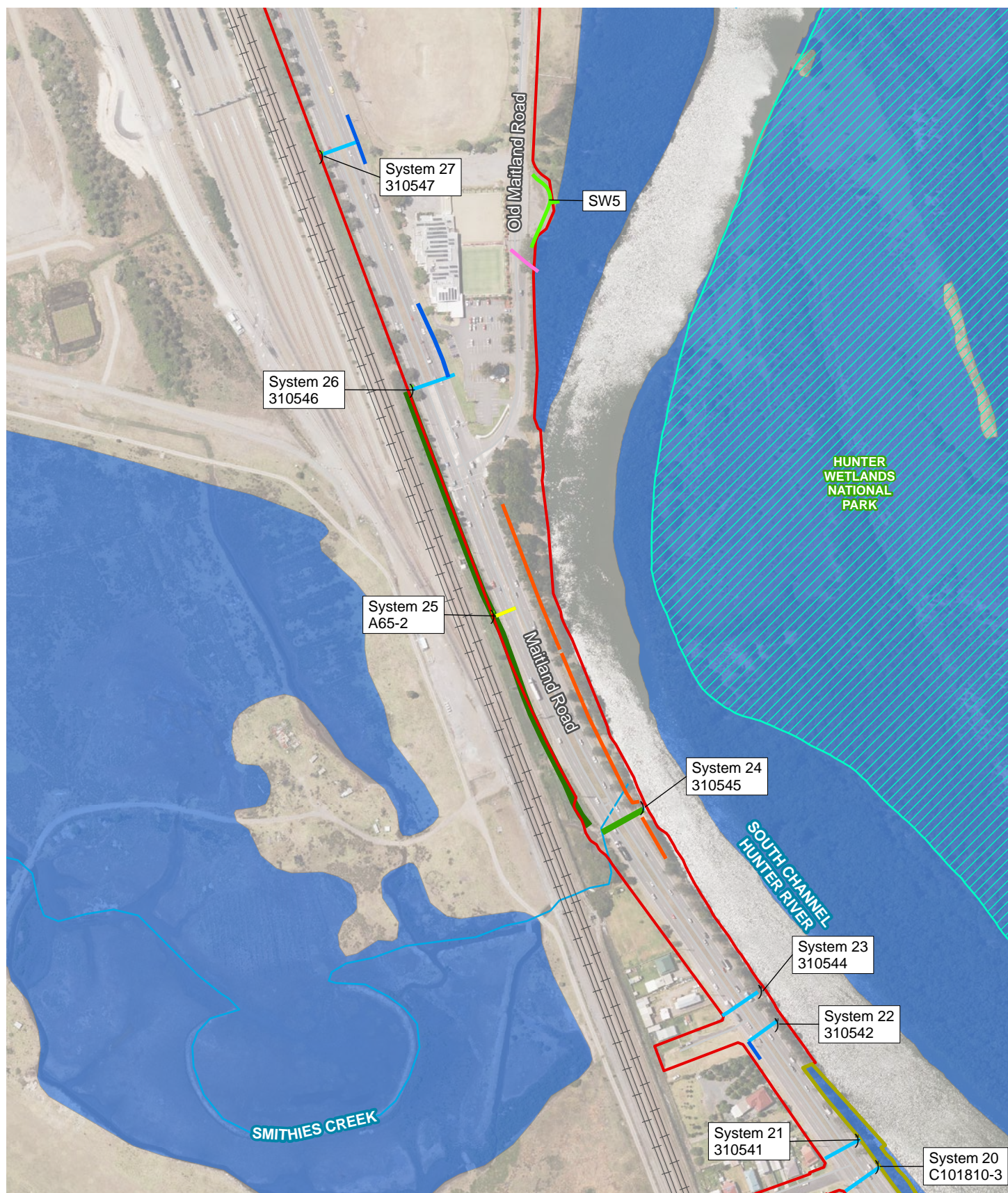
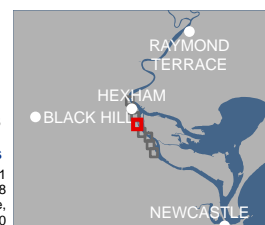
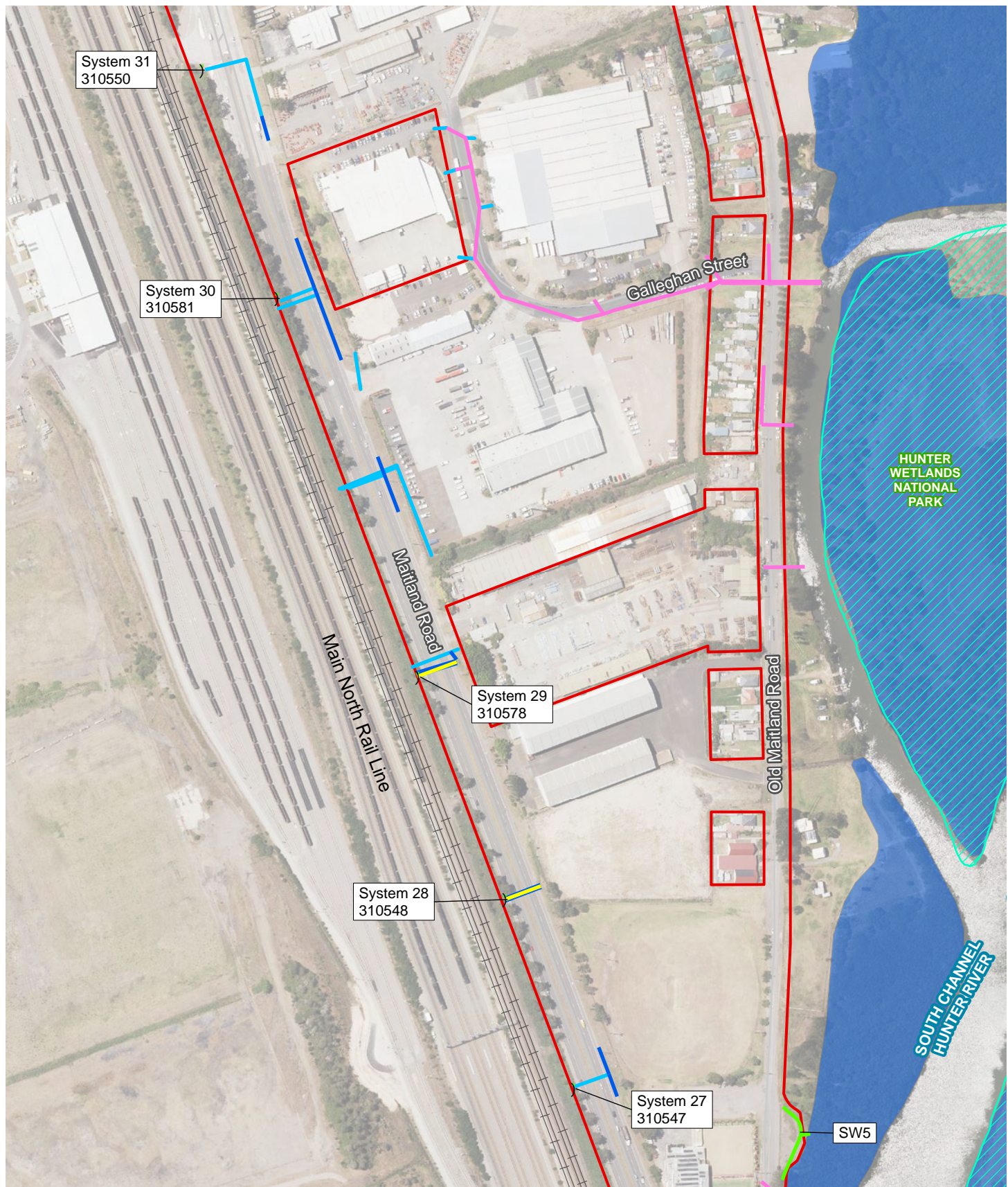


Figure B.5 Drainage features
Hexham Straight Widening





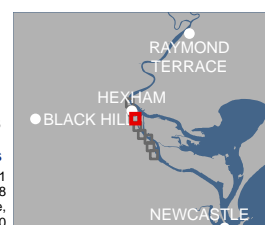
- Construction area
- Railway
- Waterway
- Hunter Wetlands National Park
- Coastal Wetlands

- Stormwater drainage system
- Existing (TfNSW)
 - Existing (City of Newcastle)
 - Proposed
 - To be removed
- Water quality controls
- Proposed grassed swale

) Minor outlet (TfNSW)



1:4,000 at A4
GDA94 MGA56



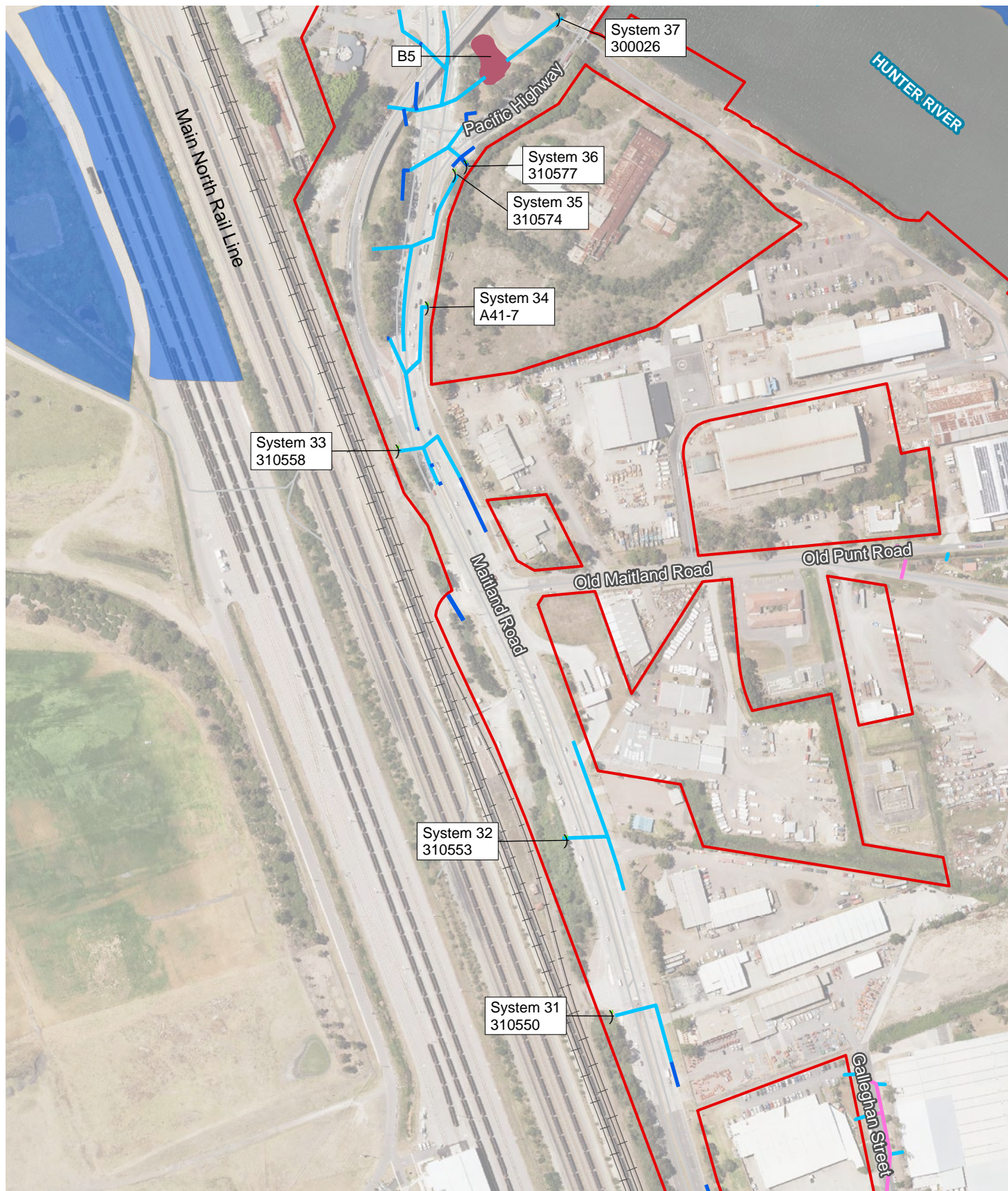
Page 6 of 8

Data sources

Jacobs 2021
Ausimage 2018
Department Finance,
Services Innovation Dec 2020

Figure B.6 Drainage features

Hexham Straight Widening

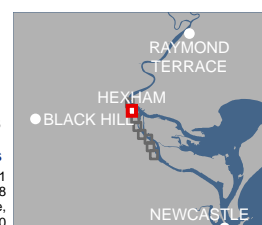


- | | |
|--|--|
| Construction area | — Stormwater drainage system |
| — Railway | — Existing (TfNSW) |
| — Waterway | — Existing (City of Newcastle) |
| Coastal Wetlands | — Proposed |
| | Basin |

- | |
|---|
|) Minor outlet (TfNSW) |
|) Minor outlet - modelled (TfNSW) |



1:4,000 at A4
GDA94 MGA56



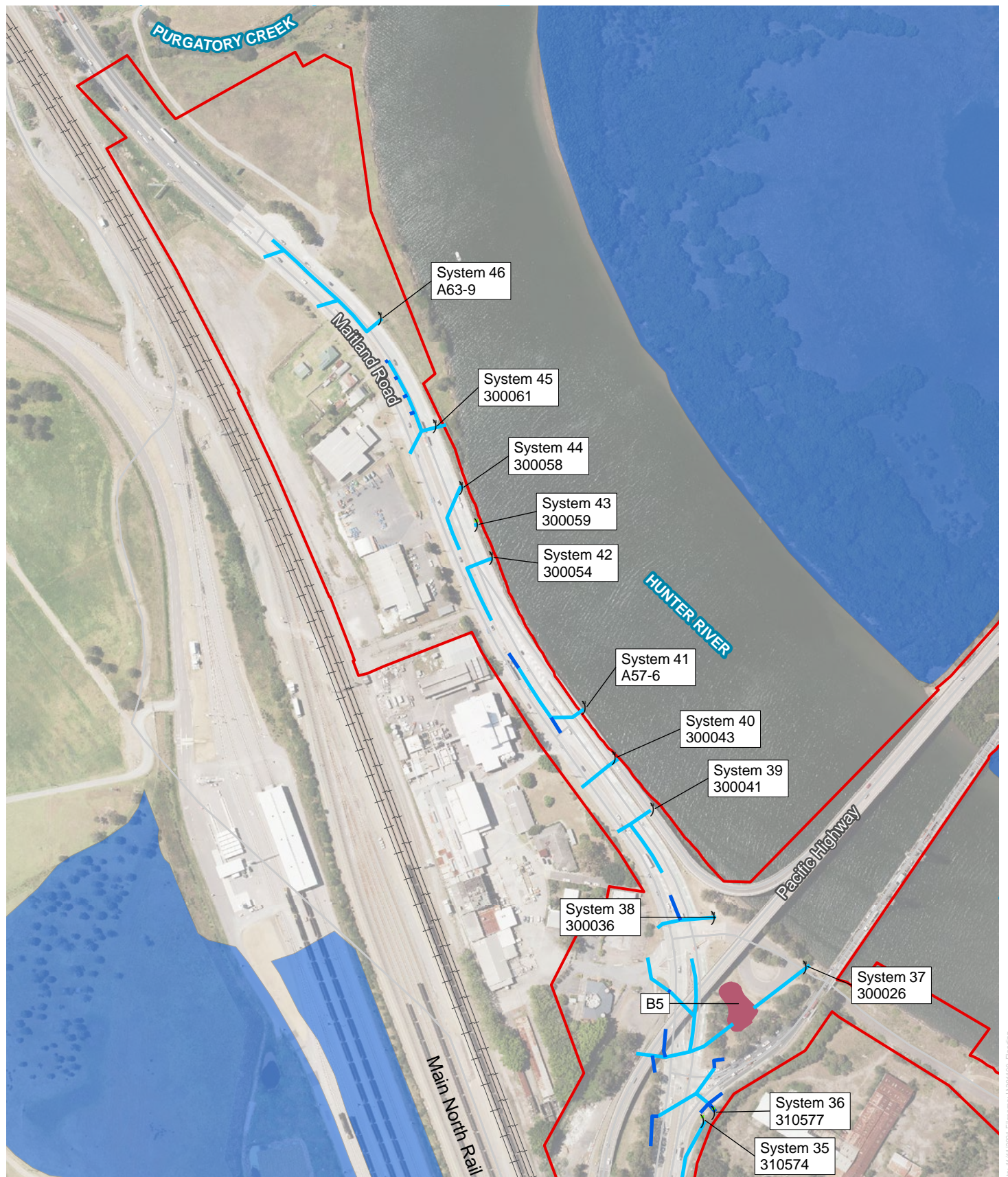
Page 7 of 8

Data sources

Jacobs 2021
Ausimage 2018
Department Finance,
Services Innovation Dec 2020

Figure B.7 Drainage features

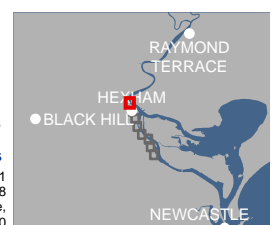
Hexham Straight Widening



- | | | |
|-------------------|---|---------------------------------|
| Construction area | Stormwater drainage system Existing (TfNSW) | Minor outlet (TfNSW) |
| Railway | Proposed | Minor outlet - modelled (TfNSW) |
| Waterway | Basin | |
| Coastal Wetlands | | |

0 50 100 m

1:4,000 at A4
GDA94 MGA56



Page 8 of 8

Data sources

Jacobs 2021
Ausimage 2018
Department Finance,
Services Innovation Dec 2020

Figure B.8 Drainage features

Hexham Straight Widening