

New and extended clearways on Hume Highway from Liverpool to Villawood

Engagement Report

Roads and Maritime Services | November 2018



Executive summary

This engagement report provides a summary of Roads and Maritime Services' engagement with the community, businesses and key stakeholders on new and extended clearways on Hume Highway between Cumberland Highway, Liverpool and Henry Lawson Drive, Villawood.

This corridor between Liverpool and Villawood was identified in the Sydney Clearways Strategy in December 2013 for the investigation of new weekend and extended weekday clearways. The strategy aims to help manage congestion across the Sydney road network by introducing new and extended clearways on busy roads that play an important role in moving people and goods across Sydney.

There are existing weekday clearways in the eastbound direction from 6am to 10am and in the westbound direction from 3pm to 7pm. Bus zones also operate along this corridor.

Roads and Maritime traffic investigations found that new and extended clearways were required on Hume Highway between Liverpool and Villawood, to help ease congestion and improve reliability of journey travel times. We also investigated business customer parking along this corridor and identified that most sections of the corridor has existing 'No Parking' and 'No Stopping' restrictions, except in the westbound section through Warwick Farm between Forbes Street and Goulburn Street, where there are five existing parking spaces in front of businesses. These five parking spaces have existing timed 'No Parking' restrictions between 6:30am and 8:30am Monday to Friday, and existing weekday afternoon clearway between 3pm and 7pm.

Our investigations also showed that the businesses on the westbound direction of Hume Highway between Forbes Street and Goulburn Street have existing customer parking at rear, accessible through Goulburn Street. Roads and Maritime is proposing to relocate the five parking spaces on Hume Highway into Goulburn Street, and introduce three 1/2P and three 1P parking spaces to increase parking turnover for business customers when the new and extended clearways are implemented.

On 29 October 2018, Roads and Maritime informed the community and key stakeholders, including business owners about the proposal to introduce new and extended clearways on Hume Highway between Cumberland Highway, Liverpool and Henry Lawson Drive, Villawood. We also asked for feedback from businesses and the community on the proposed alternative business parking in Goulburn Street (see Appendix A for the Project Update and Appendix B for distribution area).

In the announced proposal, the new and extended clearways hours would operate in both directions of Hume Highway from 6am to 7pm on weekdays and from 9am to 6pm on weekends and public holidays, as shown in Table 1.

During the engagement period, Roads and Maritime:

- spoke to 11 individuals from doorknocking 12 businesses in the westbound section through Warwick Farm where we propose to relocate five parking spaces into Goulburn Street
- spoke to 1 community member who provided feedback during the doorknocking event
- spoke to 23 community members at an information kiosk
- received 4 written submissions from businesses at Warwick Farm, all with multiple signatures
- reached 346 people and received one reaction on social media (at the close of the consultation period).

Key matters raised included:

- the need for new and extended clearways
- parking impact for businesses in the section through Warwick Farm
- the amount of alternative parking in the area.

A summary of the feedback and Roads and Maritimes' responses can be found in the section of this document titled: "Feedback summary and Roads and Maritime's response".

The decision

Roads and Maritime would like to thank everyone who provided feedback.

After considering the feedback received, Roads and Maritime will proceed with extending weekday and introducing new weekend clearways on Hume Highway between Cumberland Highway, Liverpool and Henry Lawson Drive, Villawood as show in Table 1.

Table 1 – Clearways hours on Hume Highway between Cumberland Highway, Liverpool and Henry Lawson Drive, Villawood

	Existing Clearways	New Clearways (both directions)
Weekdays	6am to 10am (eastbound) 3pm to 7pm (westbound)	6am to 7pm
Weekend and public holidays	No clearways	9am to 6pm

Existing 'No Parking' and 'No Stopping' parking restrictions will continue to operate outside the clearway hours. Bus zones will operate without change.

Roads and Maritime received requests to introduce additional short term parking in Goulburn Street for business customers, through Warwick Farm. We have listened and will be adjusting the proposed 1P parking into 1/2P parking spaces in Goulburn Street.

Council has recently implemented three 1/2P parking spaces in Goulburn Street, following a request from businesses.

Roads and Maritime will provide an additional three 1/2P parking spaces in Goulburn Street, in conjunction with Council. This will bring the total number of 1/2P parking spaces to six in Goulburn Street, to offset the five parking spaces to be removed from Hume Highway.

Roads and Maritime will continue to work with Liverpool City Council to implement the new 1/2P parking spaces in Goulburn Street. The new alternative business parking is shown in Figure 1.

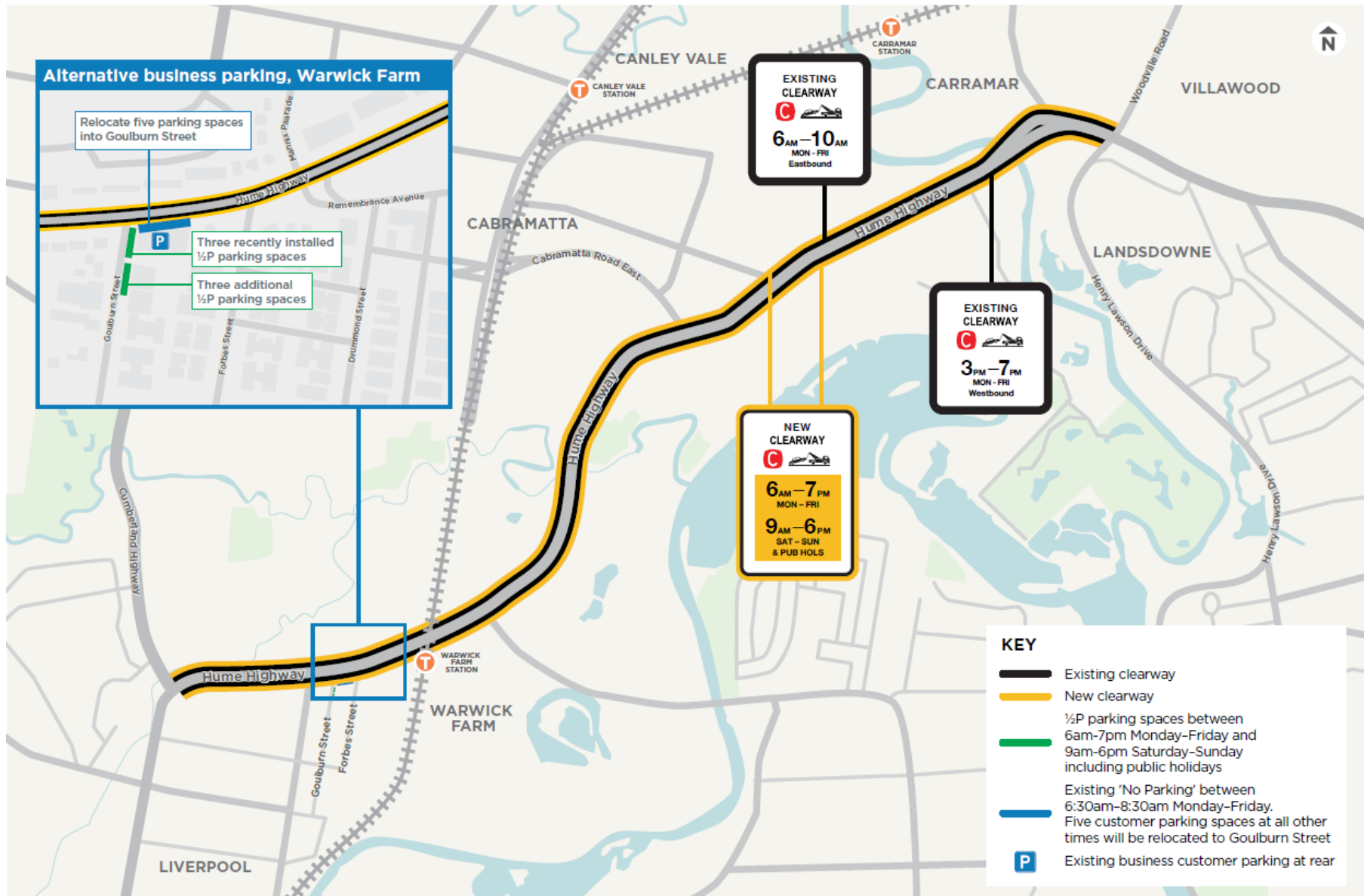


Figure 1 – New and extended clearways on Hume Highway

Contents

Executive summary.....	3
The decision	4
Introduction	7
Background	7
The proposal	8
Engagement approach.....	9
Engagement objectives	9
How engagement was done	9
Engagement summary	11
Overview	11
Feedback and Roads and Maritime’s responses	11
Feedback summary and Roads and Maritime’s response.....	12
The decision	15
Appendices	16
Appendix A – Project Update October 2018	16
Appendix B – Distribution Area	19
Appendix C – Social Media Post.....	20
Figure 1 – New and extended clearways on Hume Highway	5
Figure 2 – Proposed clearways on Hume Highway between Cumberland Highway, Liverpool and Henry Lawson Drive, Villawood.....	8
Table 1 – Clearways hours on Hume Highway between Cumberland Highway, Liverpool and Henry Lawson Drive, Villawood.....	4
Table 2 - Community and stakeholder engagement timeline	9
Table 3 - Feedback received via email and direct stakeholder engagement	12
Table 4 – Clearways hours on Hume Highway between Cumberland Highway, Liverpool and Henry Lawson Drive, Villawood.....	15

Introduction

Background

On 1 December 2013, the NSW Government released the Sydney Clearways Strategy as a key initiative to reduce congestion on Sydney's state roads. The strategy identifies over 1,000 kilometres of state roads on key corridors across Sydney, which may benefit from the introduction of new and extended clearways. The strategy aims to increase the performance of Sydney's state roads by introducing new or extended clearways on roads that are experiencing congestion and not operating at full capacity to efficiently transport people and goods across the Sydney metropolitan area.

The NSW Government's Long Term Transport Master Plan outlines a number of responses to traffic congestion in Sydney, aimed at improving travel on Sydney's roads in both the short and the long term. One of the primary means to achieve this is the use of clearways.

Traffic growth in Sydney has reached a point where there is a need to consider further improvements in the use of the existing road network to reduce travel times. The current clearways network has been in place for several decades, and has proven to be effective in improving travel times. The NSW Government is funding this project as part of its program to deliver easier, faster and safer travel on Sydney's roads.

The Sydney Clearways Strategy also sets out a process for engaging with local communities and councils and for ensuring alternative business customer parking is available to minimise impacts on local businesses.

The NSW Government has committed \$121 million to the Sydney Clearways Strategy which includes assisting local councils with alternative business customer parking solutions where feasible. So far, we have delivered over 490 kilometres of new and extended weekend and weekday clearways across the Sydney road network under the Sydney Clearways Strategy.

The Hume Highway between Liverpool and Villawood is a key corridor through Sydney's south west and provides direct access to the Cumberland Highway for those heading towards Cabramatta or Fairfield and Henry Lawson Drive for those heading towards Georges Hall and Milperra. The length of this road corridor is about 6.1 kilometres in each direction.

Investigations carried out in June 2017 and assessment completed in March 2018 found that during most weekdays and on the weekends around 88,000 vehicles travel on Hume Highway between Cumberland Highway, Liverpool and Henry Lawson Drive, Villawood. The investigations showed that this section of Hume Highway would benefit from extended weekday and new weekend clearways based on hourly traffic volumes and travel times.

Most sections of this corridor have existing 'No Parking' and 'No Stopping' restrictions, except the westbound section through Warwick Farm between Forbes Street and Goulburn Street, where there are five parking spaces on Hume Highway. Bus zones also operate along this corridor.

There are also existing weekday clearways in the eastbound direction from 6am to 10am and in the westbound direction from 3pm to 7pm.

The proposal

Roads and Maritime is proposing to introduce new and extended clearways on Hume Highway between Cumberland Highway, Liverpool and Henry Lawson Drive, Villawood.

The new and extended clearway hours are from 6am to 7pm on weekdays and from 9am to 6pm on weekends and public holidays. Existing parking restrictions such as 'No Stopping' and 'No Parking' will continue to operate outside the new and extended clearway hours. Bus zones will operate without change.

A map of the corridor and the proposed new and extended clearway hours are shown in Figure 2 below.

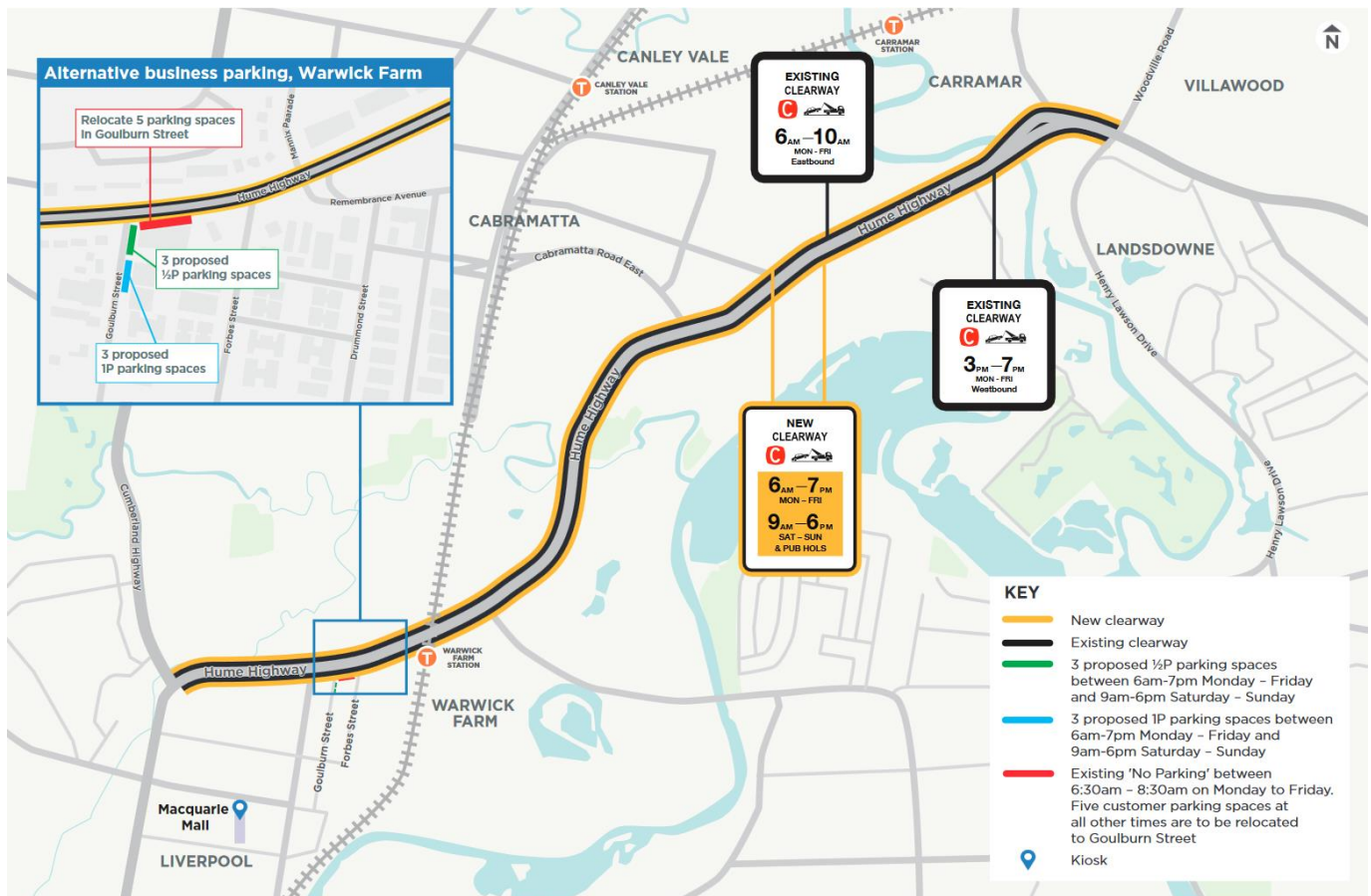


Figure 2 – Proposed clearways on Hume Highway between Cumberland Highway, Liverpool and Henry Lawson Drive, Villawood

In June 2017 Roads and Maritime investigated business customer parking along Hume Highway between Cumberland Highway, Liverpool and Henry Lawson Drive, Villawood. Our investigations showed that most sections of the corridor have existing 'No Parking' and 'No Stopping' restrictions, except in the westbound section through Warwick Farm between Forbes Street and Goulburn Street, where there are five existing parking spaces in front of businesses. These five parking spaces have existing timed 'No Parking' restrictions between 6:30am and 8:30am Monday to Friday, and existing weekday afternoon peak clearway between 3pm and 7pm. Investigations also showed that the businesses between Forbes Street and Goulburn Street have existing customer parking at rear, accessible through Goulburn Street.

In October and November 2018 Roads and Maritime sought feedback from the community, businesses and key stakeholders on the proposal to relocate the five parking spaces on Hume Highway into Goulburn Street, and adjust six unrestricted parking spaces on Goulburn Street into three 1/2P and three 1P parking spaces to increase parking turnover for business customers.

Engagement approach

Engagement objectives

Roads and Maritime engaged with the community to understand their concerns and needs, so that this feedback can be considered as part of the decision making process where possible.

This allows Roads and Maritime to:

- seek comment, feedback, ideas and suggestions for consideration when making a decision on a matter that has not yet been determined
- advise directly affected stakeholders of changes and/or proposals
- build a database of interested and concerned community members with whom to continue engagement with during the project's development and delivery
- advise the community on how they can obtain further information and communicate feedback.

How engagement was done

Roads and Maritime adopted a '**consult**' engagement approach for this project to seek feedback on the proposed alternative business customer parking in Goulburn Street and to identify if there are other potential locations or options we need to consider to meet business customer parking demand along the corridor.

Roads and Maritime commenced engagement with the community and stakeholders on Monday 29 October 2018 and feedback closed on Monday 12 November 2018 (see Table 2).

Table 2 - Community and stakeholder engagement timeline

Method	Event	Date
Stakeholder Meetings	Meeting with Fairfield City Council	28 August 2018 – Briefing to council staff
	Meeting with Liverpool City Council	3 October 2018 – Briefing to council staff
	Doorknocked businesses in the westbound section between Forbes Street and Goulburn Street where we propose to relocate five parking spaces on Hume Highway into Goulburn Street	29 October 2018
Project Update Distribution	Project Update (see Appendix A) distributed to 1,788 properties within the distribution area (see Appendix B).	29 October 2018
	Emailed Member for Liverpool, Paul Lynch MP	30 October 2018
	Emailed Member for Fairfield, Guy Zangari MP	30 October 2018

	Emailed Member for Cabramatta, Nick Lalich MP	30 October 2018
	Emailed Member for Bankstown, Tania Mihailuk MP	30 October 2018
	Emailed to key stakeholders including Local Council, police, emergency services and utility companies.	30 October 2018
	Information about the kiosk was included in the Project Update.	29 October 2018
Website	Project webpage with information including the Project Update.	29 October 2018
Social media post	Facebook post (see Appendix C) to inform of the project, date of the information kiosk and link to the project page.	1 November 2018
Information kiosk	The Clearways project team was available at Macquarie Mall, Liverpool to discuss the clearway and alternative business parking with the public.	1 November 2018
Close of feedback		12 November 2018

Engagement summary

Overview

On 29 October 2018, Roads and Maritime informed the community and key stakeholders, including business owners about the proposal to introduce new and extended clearways on Hume Highway between Cumberland Highway, Liverpool and Henry Lawson Drive, Villawood. We also asked for feedback from businesses and the community on the proposal to relocate five parking spaces on Hume Highway into Goulburn Street, and adjusting six unrestricted parking spaces on Goulburn Street into three 1/2P and three 1P parking spaces to increase parking turnover for business customers in the westbound section of Hume Highway between Forbes Street and Goulburn Street.

The community was informed of the proposal through a Project Update distributed to 1,788 properties along the proposed clearways corridor and surrounding streets. As part of the engagement, Roads and Maritime doorknocked 12 businesses on Hume Highway between Forbes Street and Goulburn Street, where we propose to relocate five parking spaces on Hume Highway into Goulburn Street.

During the engagement period between 29 October and 12 November 2018, Roads and Maritime received 4 submissions from businesses that provided feedback on the proposed clearways and relocation of parking on Hume Highway into Goulburn Street.

We have summarised the feedback received in Table 3 of this report.

In summary, key matters raised included:

- the need for new and extended clearways
- parking impact for businesses in the section through Warwick Farm
- the amount of alternative parking in the area.

A geo-targeted social media post (see Appendix C) was published on Facebook on 1 November 2018. This enabled us to engage the wider community and road users who travel along the road corridor to inform them of the proposed changes, the information kiosk and encourage feedback. The reached 346 people and received one positive reaction.

Feedback and Roads and Maritime's responses

Roads and Maritime has summarised the feedback received and provided responses in Table 3 of this report. This report is available to the public and can be found on the Sydney Clearways Program website.

All feedback has been considered to help Roads and Maritime make decisions on the introduction of new and extended clearways and new alternative parking arrangements.

We have listened and have made changes to the proposed alternative parking arrangement in Goulburn Street. The new parking changes are shown in Figure 1 (page 5 of this report).

Feedback summary and Roads and Maritime's response

Table 3 - Feedback received via email and direct stakeholder engagement

Category	Feedback	Roads and Maritimes' response
<p>1. Clearway justification</p>	<p>Difficult to believe that the slight convenience of having an additional lane outweighs the people who rely on the street parking</p>	<p>Roads and Maritime has undertaken investigations in June 2017 and found that during most weekdays and on the weekends around 88,000 vehicles travel on Hume Highway between Cumberland Highway, Liverpool and Henry Lawson Drive, Villawood each day.</p> <p>Clearways help reduce congestion where the road is close to capacity and parking disrupts the flow of traffic. When vehicles are parked in the kerbside lane, fewer lanes are available to traffic and road users are also forced to merge from the kerbside lane which can create significant delays and queues.</p> <p>Removing parking in the kerbside lane creates an additional traffic lane for road users which helps traffic flow and manages congestion. It also let more vehicles pass through each traffic light cycle. This should improve the efficiency of intersections and improve travel time and reliability for all road users.</p>
<p>2. Clearway hours</p>	<p>Keep the clearway as before</p>	<p>The Sydney Clearways Strategy published in December 2013 identified over 1,000 kilometres of state roads on key corridors across Sydney, which may benefit from the introduction of new and extended clearways to improve the movement of goods and people. These routes were identified, based on an assessment of the following guidelines:</p> <ul style="list-style-type: none"> • directional traffic flows exceed 800 vehicles per hour per lane • travel speeds are 30km/h or below during peak periods. <p>Roads and Maritime has analysed the existing traffic data, which shows that this busy road corridor would benefit from new weekend and extended weekday clearways based on hourly traffic volumes and travel times.</p> <p>It should also be noted that most sections of this corridor has restricted parking, with the use of either 'No Parking' or 'No Stopping' parking restrictions and therefore there will be minimal impact with the implementation of the proposed clearways. The clearways will allow Roads and Maritime to tow illegally parked vehicles from Hume Highway.</p> <p>The extended clearway hours are also consistent with other clearways intersecting with or adjacent to this part of the Hume Highway, to ensure a clear and simple network of</p>

Category	Feedback	Roads and Maritimes' response
		clearways for motorists.
3. Business parking, westbound of Hume Highway between Forbes Street and Goulburn Street	Clearway will severely impact my business and that of the entire street	Roads and Maritime understands that the new and extended clearways will change the ability to park in front of businesses.
	The lack of parking reduces foot traffic on the street	<p>The primary purpose of a state road such as Hume Highway is to move people and goods efficiently across Sydney. Any parking currently permitted on a state road is not specifically allocated to businesses, their customers or staff. However, Roads and Maritime acknowledge that to date this has been used by some businesses, their customers and staff, and that the proposed new and extended clearways may cause some inconvenience.</p> <p>Roads and Maritime changes parking restrictions across the state road network to ensure that the roads are meeting their primary purpose.</p> <p>The proposed alternative parking in Goulburn Street is directly adjacent to the impacted businesses and there is minimal impact to the existing customer parking at the rear.</p>
	The proposed three 1/2hr parking and three 1hr parking spaces will not be sufficient	Roads and Maritime have listened and considered the feedback received from businesses.
	More 1/2hr parking on Goulburn Street	<p>We will adjust the hours of the three proposed 1P parking in Goulburn Street into 1/2P parking to increase parking turnover for business customers.</p> <p>Roads and Maritime is also introducing an additional 1/2P parking on Goulburn Street to provide an additional business customer parking on top of the five car spaces that will be relocated from Hume Highway.</p>
4. Property access, amenity and parking	Lack of residential parking and proximity to the local train station	Roads and Maritime understands that by converting six unrestricted parking in Goulburn Street into 1/2P parking will change parking ability for residents and commuters.
	Finding parking in nearby streets is already difficult	We encourage residents to utilise driveway, garage or carport on private properties, or park in surrounding side streets.
5. Alternative parking	We request: cut off 1 part of walkway and make the new parking	Roads and Maritime is converting six unrestricted parking spaces in Goulburn Street into 1/2P parking to increase parking turnover for customers who currently park on Hume

Category	Feedback	Roads and Maritimes' response
solution		<p>Highway.</p> <p>We believe the new six short term parking spaces in Goulburn Street is sufficient to offset the five parking spaces removed from Hume Highway and therefore will not be considering modifying the walkway into parking.</p>

The decision

Roads and Maritime would like to thank everyone who provided feedback.

After considering the feedback received, Roads and Maritime will proceed with extending weekday and introducing new weekend clearways on Hume Highway between Cumberland Highway, Liverpool and Henry Lawson Drive, Villawood as show in Table 4.

Table 4 – Clearways hours on Hume Highway between Cumberland Highway, Liverpool and Henry Lawson Drive, Villawood

	Existing Clearways	New Clearways (both directions)
Weekdays	6am to 10am (eastbound) 3pm to 7pm (westbound)	6am to 7pm
Weekend and public holidays	No clearways	9am to 6pm

Existing 'No Parking' and 'No Stopping' parking restrictions will continue to operate outside the clearway hours. Bus zones will operate without change.

Roads and Maritime received requests to introduce additional short term parking in Goulburn Street for business customers, through Warwick Farm. We have listened and will be adjusting the proposed 1P parking into 1/2P parking spaces in Goulburn Street.

Council has recently implemented three 1/2P parking spaces in Goulburn Street, following a request from businesses.

Roads and Maritime will provide an additional three 1/2P parking spaces in Goulburn Street, in conjunction with Council. This will bring the total number of 1/2P parking spaces to six on Goulburn Street, to offset the five parking spaces to be removed from Hume Highway.

Roads and Maritime will continue to work with Liverpool City Council to implement the new 1/2P parking spaces in Goulburn Street. The new alternative business parking is shown in Figure 1 (page 5 of this report).



Proposed alternative business parking for clearways on Hume Highway, through Warwick Farm

Roads and Maritime Services | October 2018



Congestion on Hume Highway

The NSW Government is delivering easier, faster and safer travel on Sydney's roads.

Roads and Maritime Services is proposing new weekend and extended weekday clearways on Hume Highway between Cumberland Highway, Liverpool and Henry Lawson Drive, Villawood.

Clearways help improve journey times by making all lanes available to traffic during clearway times which reduces congestion and helps motorists get to their destination sooner.

The new weekend and extended weekday clearways on Hume Highway through Warwick Farm will improve the journey time reliability for the 88,000 motorists travelling on this corridor each day, which means less time in traffic and more time doing the things that you enjoy.

The proposed clearway hours will apply in both directions and are shown on the map from:

- Weekdays from 6am to 7pm
- Weekends and public holidays from 9am to 6pm.

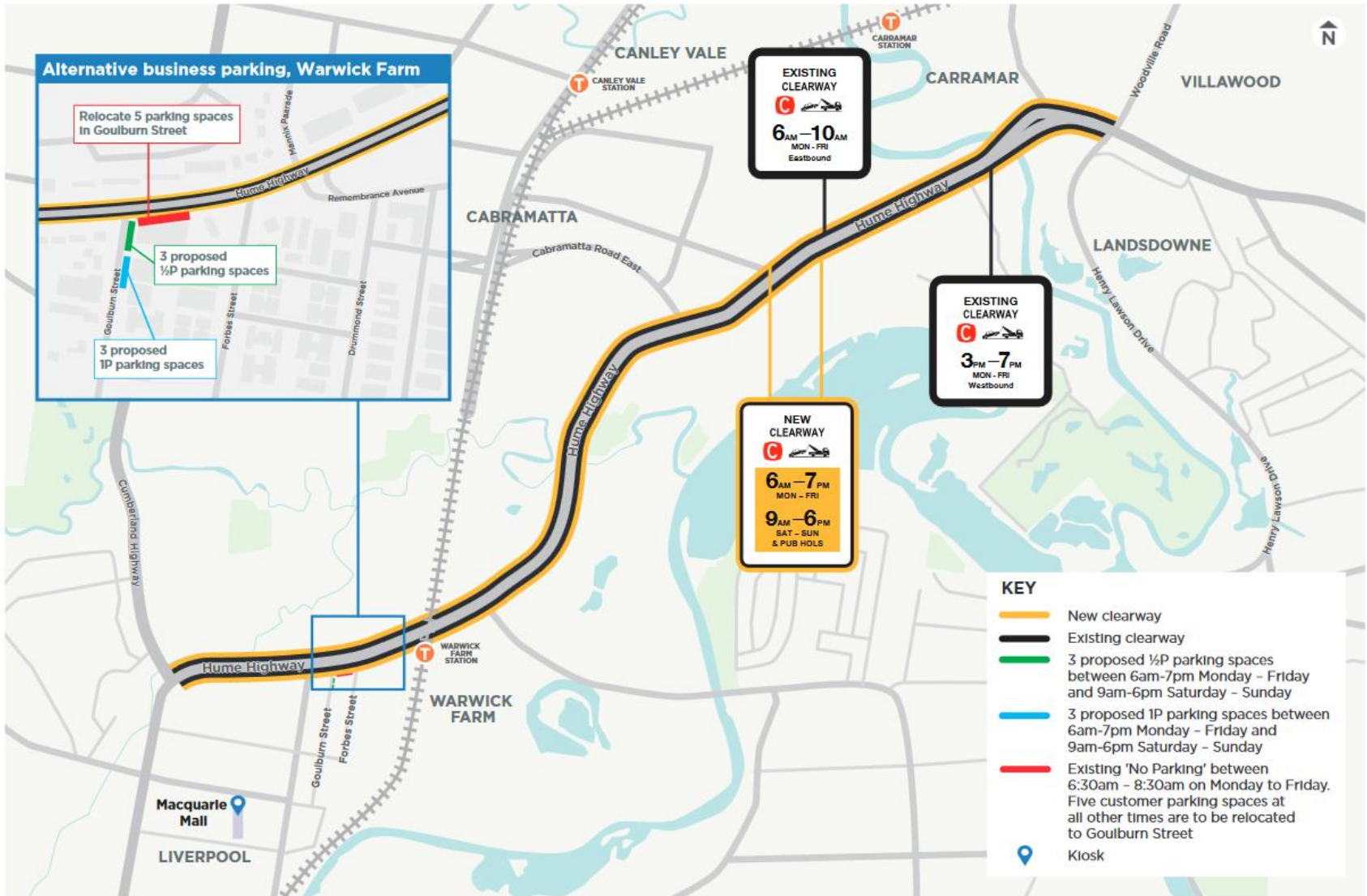
There will be no changes to existing parking restrictions on Hume Highway outside the new clearway hours.

Alternative business parking arrangements

Roads and Maritime investigated parking along this corridor and found there would be five spaces removed in front of businesses on Hume Highway between Forbes Street and Goulburn Street, Liverpool.

New timed business customer parking spaces are proposed to be provided on Goulburn Street. Details of the alternative business parking are shown on the map.

Proposed clearways and parking changes on Hume Highway, through Warwick Farm



Talk to the clearways team

The Clearways Project Team will be available to discuss the new and extended clearway hours and business parking arrangements on **Thursday 1 November** at **Macquarie Mall** from **4pm to 7pm**. The mall is located at **Macquarie Street, Liverpool** (see map for location).

We invite you to come and speak to the team and provide feedback on alternative business parking arrangements.

What happens next?

We invite your feedback on the business parking arrangements by **Monday 12 November 2018**.

Please send your comments to clearways@rms.nsw.gov.au or call **1300 706 232**.

We will consider your feedback and update you as the project progresses.



Are there other clearways in my area?

New clearways were installed earlier this year along Elizabeth Drive between M7 Motorway and Hume Highway.

Clearways are proposed on Cabramatta Road West and Cabramatta Road East between Elizabeth Drive and Hume Highway. New clearways will be installed on Henry Lawson Drive between Davies Road and Jacques Avenue on Monday 5 November 2018.

As clearway investigations progress in this area we will continue to engage with the community on any new projects.

For further information on the Sydney Clearways Strategy and how you can nominate a state road, please visit our website: www.rms.nsw.gov.au/clearways

What is a clearway?

A clearway is a section of road where stopping and parking is not allowed during the times shown on the clearway sign.

Clearways are installed on key arterial roads where traffic is often heavy and congested. They help keep vehicles moving by making all lanes available to road users. The only exception is the stopping of buses and taxis dropping off or picking up passengers as well as emergency vehicles and postal vehicles accessing a public post box.

Vehicles parked in a clearway during the clearway hours, risk being fined and the vehicle can be towed.

For the latest traffic updates, you can call 132 701, visit livetraffic.com or download the **Live Traffic NSW App**.

Vietnamese

Nếu cần thông ngôn viên, xin quý vị gọi cho Dịch Vụ Thông Phiên Dịch (TIS Toàn Quốc) qua số **131 450** và nhờ họ gọi cho Roads and Maritime Services qua số 1300 706 232

Arabic

إذا كنتم بحاجة إلى مترجم، الرجاء الاتصال بخدمة الترجمة الخطية والشفهية (TIS National) على الرقم **131 450**، والطلب منهم الاتصال بوكالتكم Roads and Maritime Services على الرقم **1300 706 232**.

Cantonese

若你需要口譯員，請致電 **131 450** 聯絡翻譯和口譯服務署 (TIS National)，要求他們致電 1300 706 232 聯絡 Roads and Maritime Services。

Contact us

If you have any questions or would like more information, please contact our project team:

1300 706 232 (during business hours)

clearways@rms.nsw.gov.au

rms.nsw.gov.au/clearways



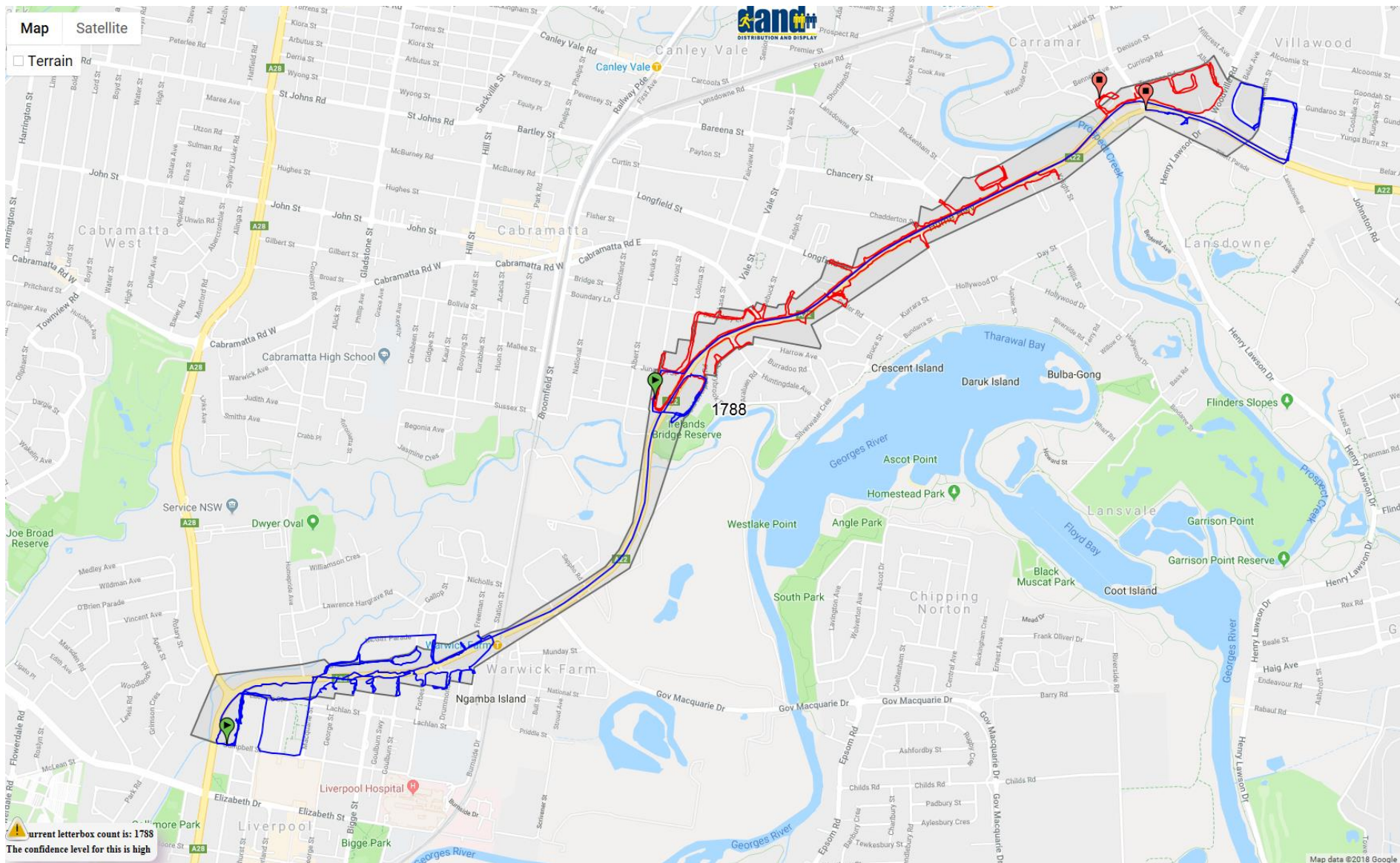
If you need help understanding this information, please contact the **Translating and Interpreting Service** on **131 450** and ask them to call us on **1300 706 232**.



October 2018
RMS 18.1052

Privacy Roads and Maritime Services ("RMS") is subject to the Privacy and Personal Information Protection Act 1998 ("PPIP Act") which requires that we comply with the Information Privacy Principles set out in the PPPI Act. All information in correspondence is collected for the sole purpose of delivering this project. The information received, including names and addresses of respondents, may be published in subsequent documents unless a clear indication is given in the correspondence that all or part of that information is not to be published. Otherwise RMS will only disclose your personal information, without your consent, if authorised by the law. Your personal information will be held by RMS at 27 Argyle Street, Parramatta 2124 NSW. You have the right to access and correct the information if you believe that it is incorrect.

Appendix B – Distribution Area



Appendix C – Social Media Post




NSW Roads ✓
November 1 at 9:18 AM · ⚙️

🚗 Motorists may soon be able to enjoy a smoother trip along the Hume Highway with clearways proposed for the busy section between the Cumberland Highway through Warwick Farm and Henry Lawson Drive 🚗

The project team will be available to discuss the new clearways at Macquarie Mall at Liverpool on Thursday 1 November from 4pm to 7pm.

Find out more about the project at: <https://rms.social/HumeHwy>



346
People Reached

7
Engagements

Boost Unavailable



1300 706 232



clearways@rms.nsw.gov.au



Clearways project team
PO Box 973, Parramatta NSW 2124



www.rms.nsw.gov.au/clearways

Vietnamese

Nếu cần thông ngôn viên, xin quý vị gọi cho Dịch Vụ Thông Phiên Dịch (TIS Toàn Quốc) qua số **131 450** và nhờ họ gọi cho Roads and Maritime Services qua số 1300 706 232

Arabic

إذا كنتم بحاجة إلى مترجم، الرجاء الاتصال بخدمة الترجمة الخطية والشفهية (TIS National) على الرقم **131 450**، والطلب منهم الاتصال بوكالتكم Roads and Maritime Services على الرقم 1300 706 232.

Cantonese

若你需要口譯員，請致電 **131 450** 聯絡翻譯和口譯服務署 (TIS National)，要求他們致電 1300 706 232 聯絡 Roads and Maritime Services。

November 2018

RMS.18.1108

ISBN: 978-1-925891-02-7