

Night closures and detour arrangements on Martin Bridge, Taree from Sunday 10 June

The NSW Government is funding a maintenance program in preparation for future painting work on Martin Bridge.

Roads and Maritime Services will carry out the work, which includes repairing and replacing steel beams, rivets and bolts on the bridge from Sunday 10 June.

Due to high volumes of traffic on the bridge during the day, and for the safety of workers and motorists, work on the bridge will be carried out at night.

We will be working between **7pm** and **5am** from **Sunday** to **Thursday** and expect to complete the work in **eight weeks**, weather permitting. We will let you know in advance if we need to do any work outside these times.

Site establishment work is scheduled to start on Monday 28 May and will be carried out during the day with limited impacts on traffic.

How will the work affect you?

The work will involve the use of machinery which generates some noise. We will make every effort to minimise noise by turning off machinery and vehicles when not in use.

Bridge closures and traffic changes

There will be some temporary traffic changes to ensure the work zone is safe.

The work requires partial and full bridge closures at night to ensure the safety of workers and motorists.

We have considered community feedback received during work activities carried out on Martin Bridge in 2014 and 2015 to develop a schedule that minimises impacts to motorists and the community.

The proposed bridge closure schedule is provided below.

Bridge closure	Date	Duration	Time
Partial bridge closures with lane closures	Sunday 10 June – Thursday 28 June	Three weeks, weather permitting	7pm – 5am
Full bridge closure with detour	Sunday 1 July – Thursday 2 August	Five weeks, weather permitting	7pm – 5am

Proposed detour

During the full bridge closures, a detour will be in place via the Pacific Highway and Cundletown as shown in the map provided. **The detour route will add up to 17 kilometres or around 20 minutes additional travel time.**

During the partial bridge closures with lane closures a 40km/h speed limit will be in place during work hours and may affect travel times. Motorists should allow up to 15 minutes extra travel time during the partial bridge closures.

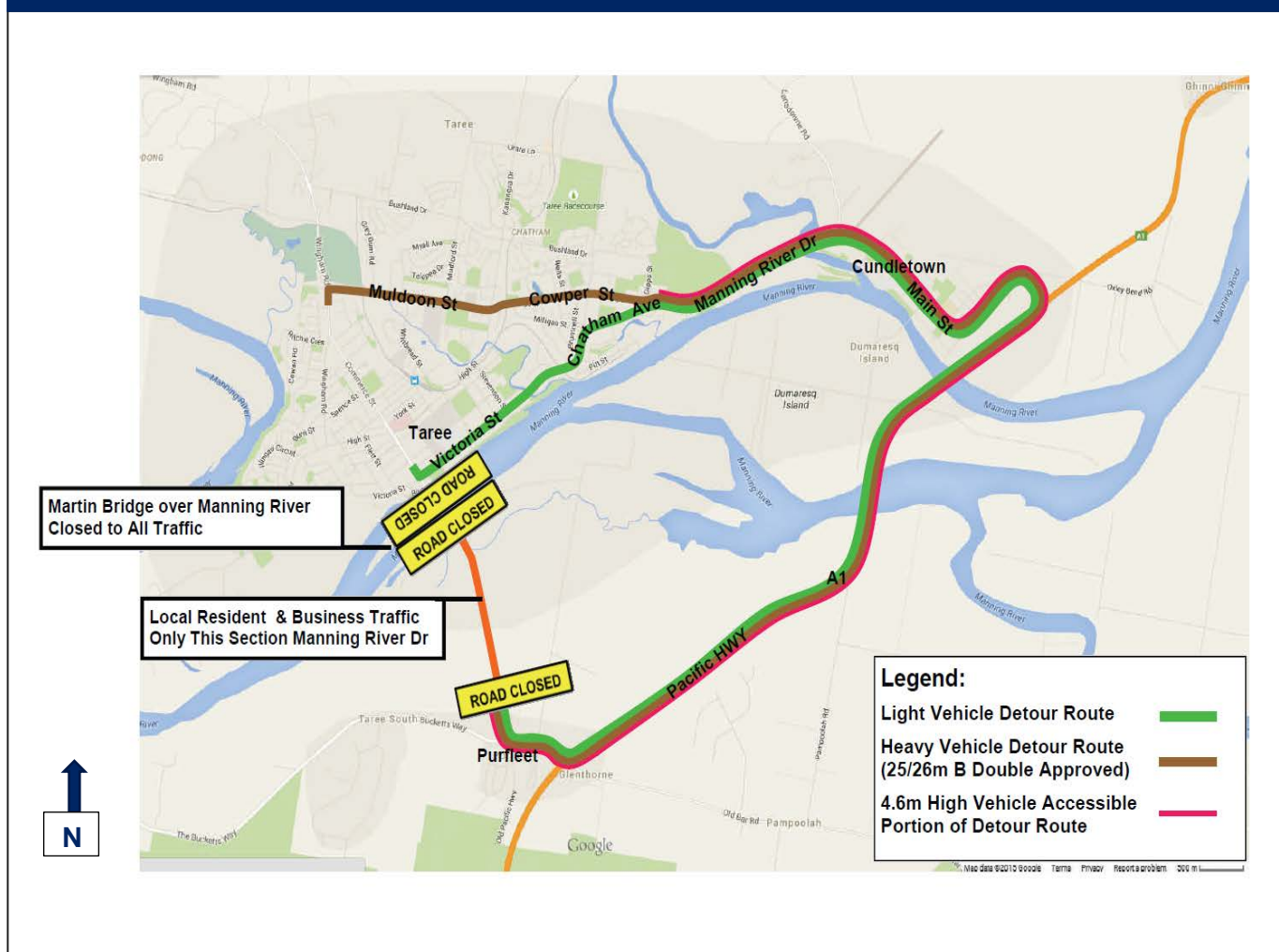
Please keep to speed limits and follow the direction of traffic controllers and signs. For the latest traffic updates, you can call 132 701, visit livetraffic.com or download the Live Traffic NSW App.

Contact

If you have any questions, please contact our Project Manager, Michael Rheinberger on 02 4908 7561 or michael.rheinberger@rms.nsw.gov.au. For more information on our projects, visit rms.nsw.gov.au.

Thank you for your patience during this important work.

Detour route – Martin Bridge closure



If you need help understanding this information, please contact the Translating and Interpreting Service on 131 450 and ask them to call us on 02 4908 7561.