

Night work on Memorial Avenue at Kellyville from Monday 16 August 2021

The NSW Government is upgrading Memorial Avenue to ease congestion, improve travel times and meet the future transport needs for Sydney's growing northwest.

In line with the NSW Government announcement on Wednesday 28 July 2021, construction on Memorial Avenue recommenced on 2 August 2021.

This work is in line with the Public Health Order and a COVIDSafe plan is in place, including the use of masks and QR codes.

Further information about construction resuming in Sydney is available on the [Infrastructure NSW website](#).

What are we doing?

Night work will be carried out for the upgrade from **16 August until 27 August** between **8pm** and **5am Monday to Friday**, weather permitting. We need to carry out this work at night to minimise traffic disruption and reduce any risks to the workers and road users during the day.

We will be working on the following dates, weather permitting:

- **Monday 16 August** to remove two trees, one on Windsor Road between Wrights Road and Memorial Avenue and the second on Windsor Road near the Memorial Avenue intersection
- **Monday 16 August to Friday 20 August** to relocate services near the intersection of Memorial Avenue and Stone Mason Drive
- **Monday 23 August to Friday 27 August** to relocate services near the intersection of Memorial Avenue and Free Settlers Drive and near the intersection on Memorial Avenue and Windsor Road.

How will the work affect you?

Our night work hours will be between **8pm and 5am from Monday to Friday**. However, our work crews may be on site from 6pm to prepare for the shift and set up safety equipment.

The work will involve some use of noisy machinery. We will make every effort to lessen the disturbance where possible, implementing static noise mitigation controls and turning off vehicles when not in use.

Directly affected residents will be advised about the expected night work near their property and the mitigation measures being taken to lessen the disturbance during the work.

Our work schedule

Our normal construction hours are **7am to 6pm Monday to Friday** and **8am to 1pm on Saturday**.

Our night work hours will be between **8pm and 5am from Monday to Friday**. We may work up to five nights per week

We also plan to work on Saturday between 7am and 5pm.

We will not work on public holidays.

Contact us

If you have any questions about this work or the Memorial Avenue upgrade or if you would like to be added to database for regular email updates please contact our project team on **1800 784 847** or **memorial.avenue@daracn.com.au**

For more information on our projects, visit rms.nsw.gov.au

Thank you for your patience during this important work.

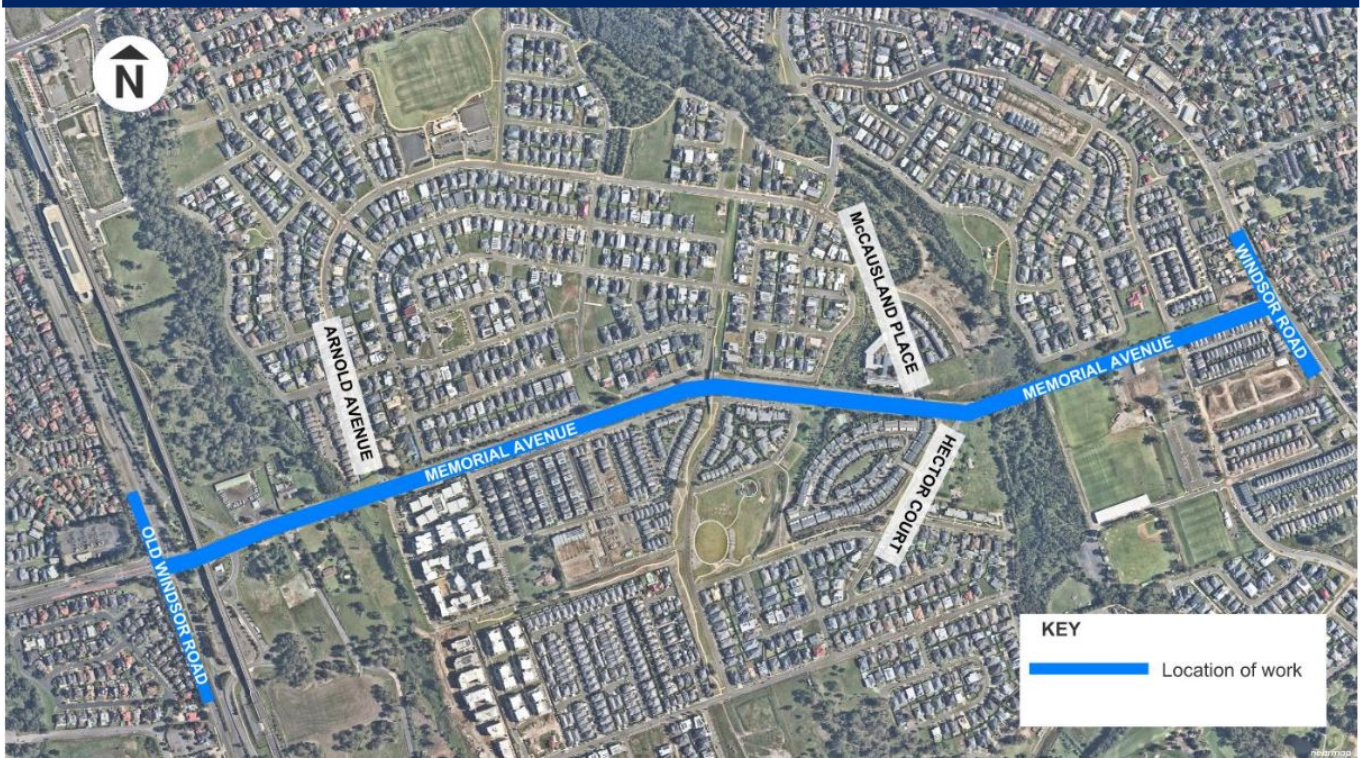
Temporary traffic and pedestrian changes

There will be some temporary traffic changes to ensure the work zone is safe. Partial lane closures and a reduced 40km/h speed limit will be in place. Travel times may be affected by up to five minutes.

There have been some changes to pedestrian routes throughout the project for the safety of the community and project workers. For further details and up to date information on all detours in place, please visit the project website: nswroads.work/memorialave

Please keep to speed limits and follow the direction of traffic controllers and signs. For the latest traffic updates, you can call 132 701, visit livetraffic.com or download the Live Traffic NSW App.

Location of Memorial Avenue Upgrade



If you need help understanding this information, please contact the Translating and Interpreting Service on 131 450 and ask them to call us on 1800 784 847.