

# Kingsford to Centennial Park walking and cycling improvements

Work look ahead and out of hours work for September & October

Transport for NSW | September 2022

The Australian and NSW Governments are delivering walking and cycling improvements to provide an active transport link between Kingsford and Centennial Park.

## Upcoming work – standard hours

We have commenced construction work along the project alignment to build the new cycleway.

Work includes upgrading the stormwater drainage system and building new footpaths, kerbs, gutters, pram ramps and driveways.

Our work will continue throughout **September and October 2022**, however will continue past this date, and we will continue to keep you informed .

Our standard work hours are Monday to Friday, 7am to 6pm and Saturday, 7.30am to 3.30pm. Work is dependent on weather and site conditions and is subject to change.

Please refer to the maps overleaf for detailed locations of upcoming work.

### Upcoming activities in standard hours:

- Commence footpath works and electrical installation on Doncaster Avenue, between Abbotsford Street and Carlton Street– **up to three weeks of work**
- Continue construction of the cycleway on Doncaster Avenue between Bowral Street and Todman Avenue - **up to 14 days of work remaining**
- To complete this work in the school holiday period **we will work extended hours on Saturday** from 7am to 6pm (in the school holidays only)
- Continuing construction of the cycleway on Doncaster Avenue, between Todman Avenue and Anzac Parade – **up to 14 days of work remaining**

- Commence construction of the cycleway on Houston Road, between Day Avenue and Strachan Street - **up to two months of work**
- Commence stormwater, pavement and traffic signal work at Day Avenue and Doncaster Avenue intersection - **up to two months work**
- Continuing construction of the cycleway on Doncaster Avenue between Anzac Parade and Koorinda Avenue – **up to two months work**

## Upcoming work - out of hours

Most work will be completed during the day, however to maintain safety for road users and workers, and to keep people moving on local roads, we need to carry out some of our work outside of normal construction hours.

The construction activities below will occur outside of standard work hours between **1 September and 31 October**.

This work will occur up to five nights a week, between 7pm and 5am, Sunday to Thursday, dependent on weather and site conditions . We do not work on public holidays.

### Upcoming activities out of hours:

- Commence footpath works and electrical installation on Doncaster Avenue, between Abbotsford Street to Carlton Street – **up to five nights of work**
- Continuing constructing traffic signals, electrical installation, and concreting works at the intersection of Todman Avenue and Doncaster Avenue – **up to 10 nights of work**

- Constructing a new pedestrian crossing at Doncaster Avenue into Darling Street – **up to 12 nights of work**
- Constructing new concrete medians and commence electrical installation on both Doncaster Avenue and Ascot Street - **up to 10 nights of work**
- Constructing new stormwater pit on Doncaster near Ascot Street - **up to three nights work**
- Commencing pavement and stormwater works between Anzac Parade and Roma Street – **up to five nights of work**
- Stormwater installation at Day Avenue and Doncaster Avenue intersection – **up to 10 nights of work**
- Stormwater installation and potholing along Houston Road between Day Avenue and Gardeners Lane – **up to five nights of work**
- Removing the tree and existing roundabout at the intersection of Barker Street and Houston Road - **up to five nights of work**
- Completing tree trimming and removal at Sturt Street, between Bunnerong Road and Anzac Parade – **up to two nights of work**
- Locating utilities and potholing, removing a section of the existing traffic island and constructing traffic signals at the intersection of Bunnerong Road, General Bridges Crescent and Sturt Street – **up to 30 nights of work**
- Potholing and traffic signal works at the intersection of Gardeners Road and General Bridges Crescent intersection – **up to 15 nights of work**

## Minimising community impact

Our work activities will require the use of machinery that generates noise, light and vibration. Equipment used for these activities include: concrete saw cutter, excavator, core drill, concrete truck, compaction equipment, vacuum excavation truck, mobile lighting tower, chainsaws, power tools and utility trucks.

To minimise the impact of this work we will:

- Complete noisiest activities (use of chainsaws, mulchers, jack hammering and saw cutting) by midnight
- Schedule breaks in work program and move locations
- Turn off machinery when not in use
- Use acoustic blankets to minimise noise, where feasible
- Direct temporary lighting down and away from houses

- Fit equipment with devices to minimise noise, particularly non-tonal reversing beepers
- Monitor noise periodically so we can manage any potential impacts and adjust our work as required.
- We will work with residents in close proximity to these works to minimise impacts and we will notify you ahead of the work in your area.
- All work will be carried out in line with the project environmental approvals.

## Site compounds

Site compounds were established in March 2022 and will continue to be used throughout the project for the storage of materials and equipment, site office and worker amenities.

Our site compounds may be in use during our standard and out of hours work.

## Traffic and pedestrian path changes

There will be temporary lane closures to ensure the safety of road users and workers and temporary changes to parking.


There may also be partial footpath closures near our work area and alternative path and signs will be in place.

We may also have detours in place for some of our work. Properties affected by these detours will be notified directly.

Please allow extra travel time, keep to speed limits and follow signs and traffic controller directions. For the latest traffic updates, call 132 701, visit [livetraffic.com](http://livetraffic.com) or download the Live Traffic NSW app.

### Contact us

If you have any questions, or would like to sign up for regular construction email construction updates, please contact our delivery partner, Burton Contractors:

 1800 650 031

 [K2CP-community@burtoncontractors.com.au](mailto:K2CP-community@burtoncontractors.com.au)

 [nswroads.work/k2cp](http://nswroads.work/k2cp)

### Translation



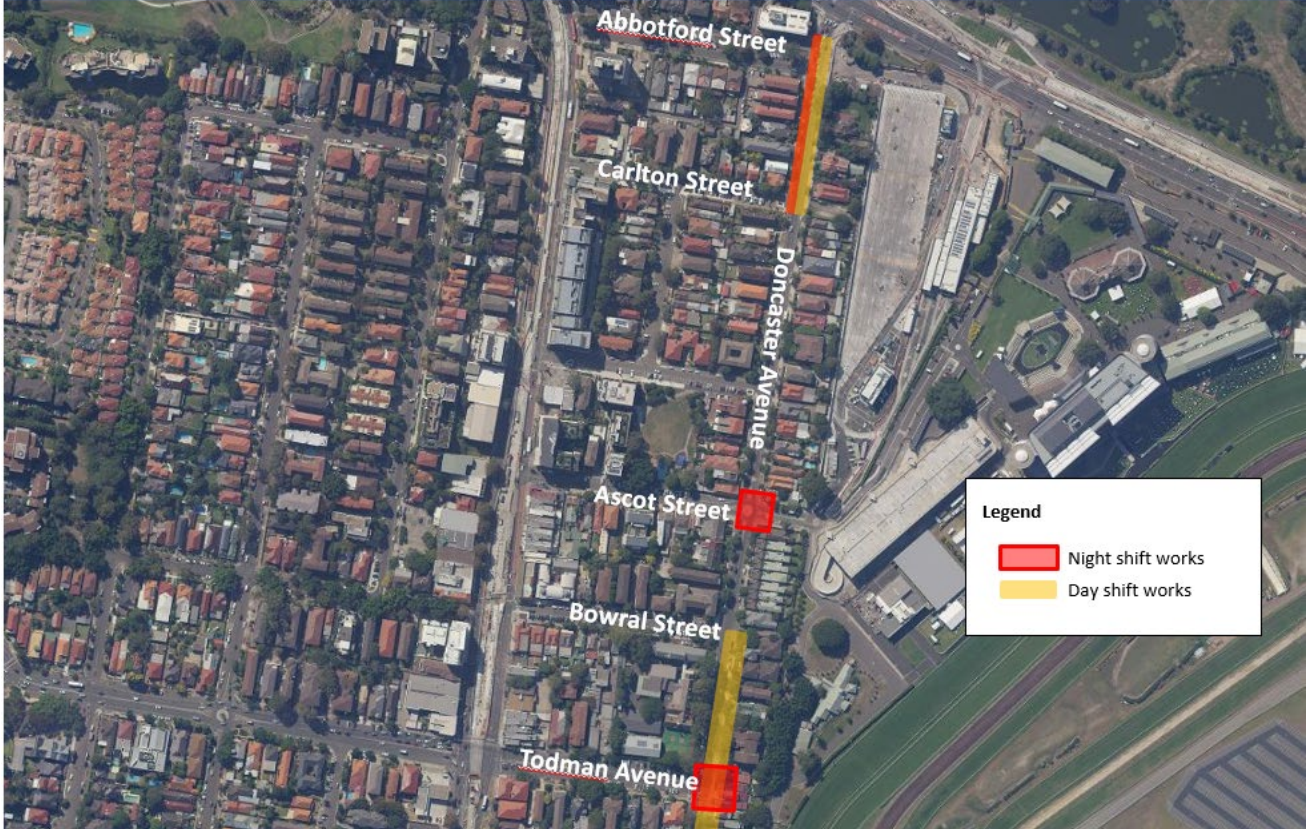
If you need help understanding this information, please contact the Translating and Interpreting Service on 131 450 and ask them to call us on 1800 650 031.

# Kingsford to Centennial Park walking and cycling improvements

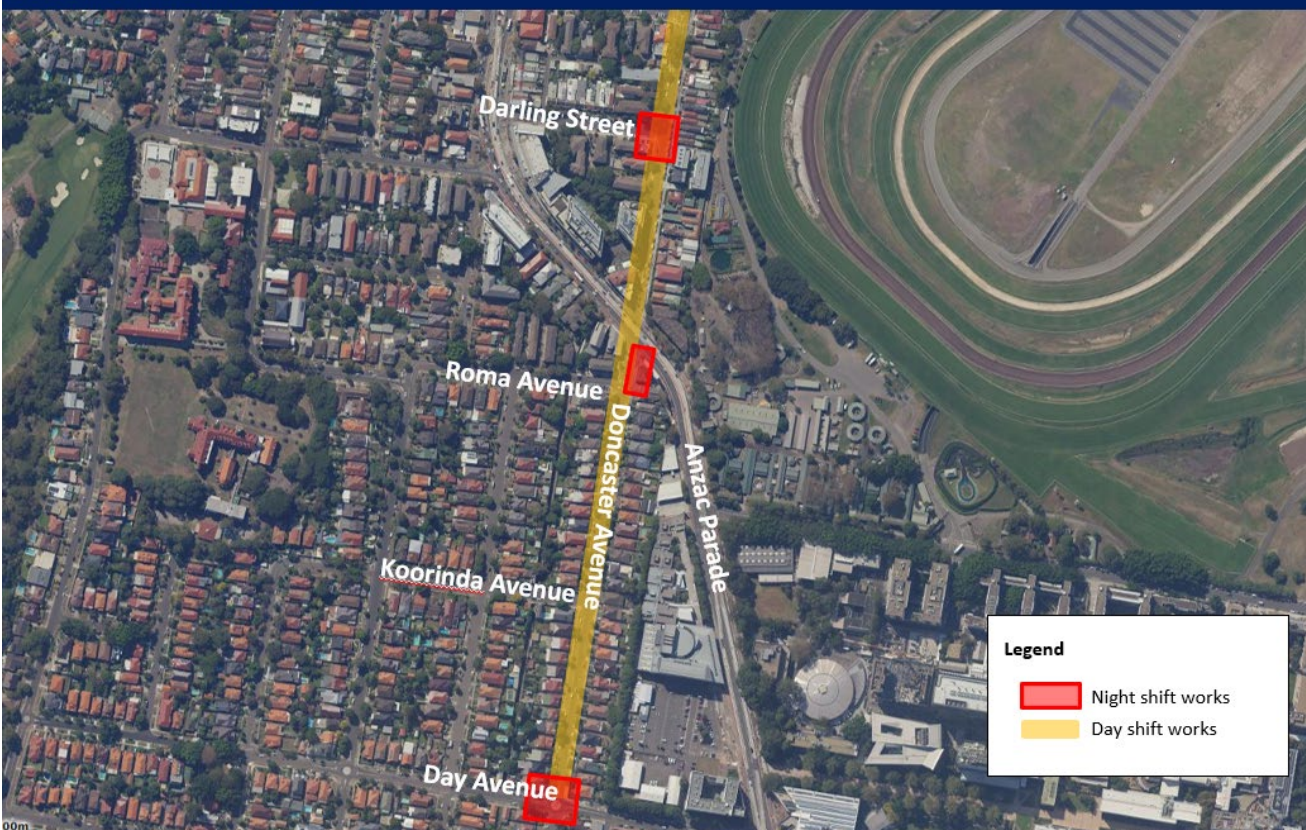
View the project webpage using the QR code:



Location of works in Kensington



Location of works in Kensington



# Kingsford to Centennial Park walking and cycling improvements

View the project webpage using the QR code:



Location of works in Kensington and Kingsford



Location of works in Kingsford

