

Intersection improvements on Kingsway and Elouera Road, Cronulla

Engagement summary

Roads and Maritime Services | March 2019

Executive summary

This report provides a summary Roads and Maritime Service's community engagement for improvement to the intersection of Kingsway and Elouera Road, Cronulla.

The project is being delivered to improve traffic flow from Elouera Road onto Kingsway. It will also reduce congestion and delays for through traffic from Elouera Road onto Gerrale Street.

The work will widen Elouera Road to incorporate an additional, dedicated right-turn lane onto Kingsway. To achieve this widening, the alignment of a number of existing parking spaces will be changed from 90 degree rear-to-kerb, to parallel, reducing the overall number of parking spaces on Elouera Road by 15.

The widening will also require us to use a small width of the paved area on the western edge of Peryman Square, adjacent to the intersection. This requires relocation of existing garden beds presently maintained by Sutherland City Council.

In November 2018, Roads and Maritime announced the project and called for public comment on a number of related options. These were:

- preferred options to offset the reduction in Elouera Road parking spaces
- preferred type of plants in the relocated garden beds on Peryman Square
- our proposed work schedule.

Roads and Maritime Services used a number of forums to notify residents, businesses and interested parties of the proposed intersection improvement. A printed notification was distributed to more than 4100 local businesses and residents; two community consultation pop-up stalls were held in Cronulla's main pedestrian mall in early-December 2018; the project was outlined on the Roads and Maritime website; and promoted posts were published on Roads and Maritime's Facebook page. The project attracted media coverage in the St George and Sutherland Shire Leader.

Highlights of the community engagement:

- 70 members of the community spoke with Roads and Maritime officers at community consultation pop-up stalls on Cronulla Street, Cronulla on 6 and 8 December 2018
- 35 individual submissions received
- 15 individuals and one group submission expressed views on preferred parking offset options for a total of 29 votes
- eight individuals offered comment on the landscaping options.
- 15 out of scope comments were received
- 32,000 audience reach and 189 responses on the Roads and Maritime Facebook project post.

Outcome

A final decision on both the parking offset and landscaping options will require the agreement of Sutherland Shire Council, which is responsible for both. The community engagement outcomes will inform Roads and Maritime's discussions with Council in this regard.

Option B, which would change untimed parking on Mitchell Road to four-hour timed parking, was the most popular parking to offset parking lost on Elouera Road. Re-locating garden beds with the same type of plants as they currently have was the most popular planting option. No comments were received about the proposed accelerated work schedule.

The public comments are summarised below. Roads and Maritime Services responded to all submissions and a summary of these responses is included below.

Contents

Intersection improvements on Kingsway and Elouera Road, Cronulla	1
Engagement summary	1
Executive summary.....	3
Outcome.....	3
1. Introduction	5
1.1 Background	5
1.2 The Proposal	5
1.3 Bali Memorial.....	5
2. Engagement approach.....	6
2.1 Engagement objectives	6
2.2 How engagement was done	6
3. Engagement summary	7
3.1 Overview	7
3.2 Responses to parking offset and landscaping options	7
3.3 Public comment within scope and Roads and Maritime responses (representative comments)	8
3.4 Out-of-scope submissions and Roads and Maritime responses.....	9
3.5 Social media posts and public comment.....	11
4. Engagement outcome and next steps	12
5. Appendices	13
5.1 Project notification	13
5.2 Appendix 2 – community notification distribution area.....	17

1. Introduction

1.1 Background

Elouera Road, Cronulla is a significant local road under the control of Sutherland Shire Council. It is also an important feeder road for Kingsway, which begins at its intersection at Peryman Square, near Dunningham Park. Southbound congestion on Elouera Road has consequences for road users trying to turn right onto Kingsway or straight ahead on Gerrale Street.

1.2 The Proposal

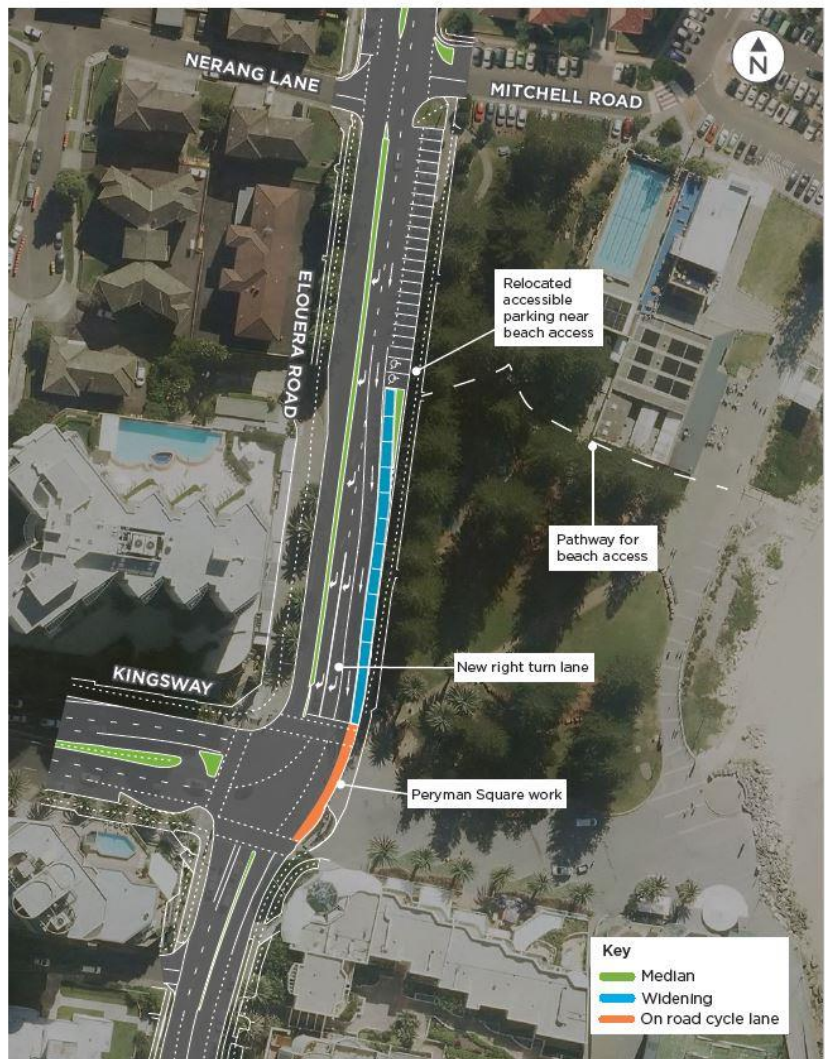
Roads and Maritime Services is upgrading the intersection to create an additional, dedicated right-turn lane from Elouera onto Kingsway. This will allow more vehicles to make the turn with each traffic light phase, as well as easing congestion for through-traffic onto Gerrale Street, which is often delayed by banked-up right-turn traffic.

The work involves widening Elouera Road on its approach to Kingsway. This is done, in part, by changing the alignment of existing parking spaces on Elouera Road from rear-to-kerb to parallel. As a result, the overall number of parking spaces will be reduced by 15. (Two existing accessibility parking spaces near Peryman Square were relocated a short distance north on Elouera during early work in December 2018, to ensure availability of disabled parking when construction begins).

The road through the intersection will also be widened, allowing the opportunity to construct a dedicated, painted cycle lane, which will run along the edge of Peryman Square and connect with Sutherland Shire Council-designated cycle routes on Elouera Road and Gerrale Street.



Intersection improvements on Kingsway and Elouera Road, Cronulla



1.3 Bali Memorial

Peryman Square is home to the memorial commemorating the lives lost in the 2003 Bali bombings. Work on the intersection, and at Peryman Square in particular, will not encroach upon the memorial. Roads and Maritime and its construction contractor will ensure access to the memorial is not affected by nearby work.

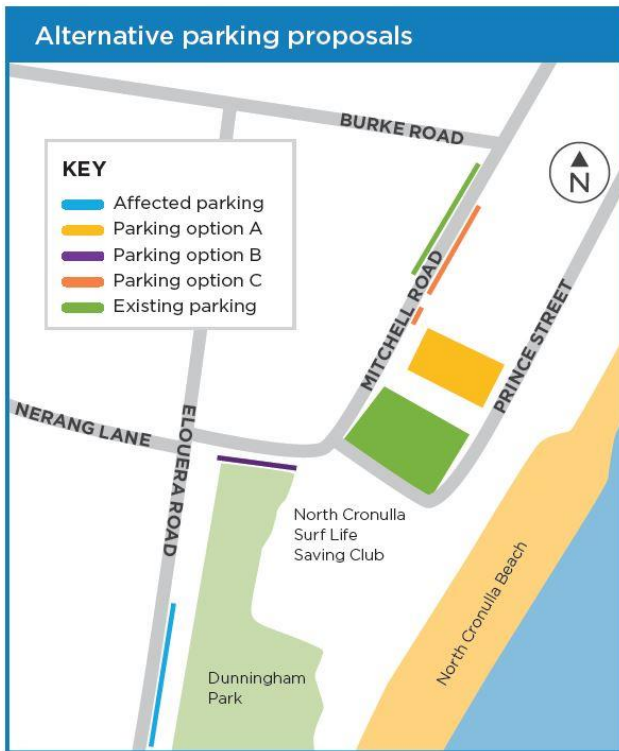
2. Engagement approach

2.1 Engagement objectives

In November 2018, Roads and Maritime called for public comment on aspects of the intersection improvement. The consultation period closed on 17 December 2019.

Interested parties were asked to provide feedback on three aspects of the project: parking offsets; garden bed re-plantings in Peryman Square; and the proposed work schedule.

Parking offsets: Roads and Maritime worked with Sutherland Shire Council to develop options that could offset the loss of some or all of these spaces. These were:



Option A: Converting existing green space at the rear of the Mitchell Road car park. This would fully offset the loss of the 15 Elouera Road parking spaces.

Option B: Change the existing untimed parking spaces on Mitchell Road, near Elouera Road, to four hour timed parking. This would offset the loss of 13 timed spaces from Elouera Road.

Option C: Move parking spaces on Mitchell Road, from Burke Road south to Prince Street, from the west side of the road to the east side of the road. This would create an extra seven untimed spaces to partially offset the loss of parking on Elouera Road.

Garden bed plantings: The widening of the intersection adjacent Peryman Square also requires the relocation of large garden beds, which are presently maintained by

Sutherland Shire Council. Roads and Maritime are bearing the cost of replacing the garden beds. It was decided to use the work as an opportunity to gauge the public's views on whether the new plantings should feature flowers (as they are at present) or to establish native species.

Work schedule: The public was invited to comment on the proposed work schedule, however, no submissions were received in this regard.

2.2 How engagement was done

Community members were encouraged to indicate their support for one or more of the parking and landscaping options and/or to make submissions or comment on the intersection improvement.

Community project notification (see Appendix A)	<ul style="list-style-type: none"> • Hand-delivered to 4100 residents and businesses likely to be affected by the work and the upgrade • Delivered to Sutherland Shire Council and local MP • Media release from local MP • Project post on the Roads and Maritime Facebook page (audience reach of 32,000) • Published on the RMS website • Promoted through the Roads and Maritime Facebook page
---	--

Community pop-up stalls in Cronulla CBD	<ul style="list-style-type: none"> • 6 and 8 December, 2018, outside the post office in the Cronulla Street pedestrian mall • Pop-up stalls staffed by Roads and Maritime officers discussing aspects of the project and encouraging feedback from interested community members • Around 70 conversations with members of the public over two days
Doorknocking local businesses	<ul style="list-style-type: none"> • Advising businesses of the upcoming work (including advance work in December 2018) and what to expect while work takes place • Particular focus on retail/hospitality businesses in and around Peryman Square and next to the intersection

3. Engagement summary

3.1 Overview

At the close of the engagement period 17 December 2018, Roads and Maritime had received 35 submissions on the project.

Of these, 14 individual and one group submission had been received in relation to parking offsets, while eight respondents indicated a preference for the landscaping at Peryman Square. Many of the individual submissions included support for more than one parking offset option. There were no comments about the project’s work schedule.

3.2 Responses to parking offset and landscaping options

Table 1: Parking offset options

Option (see description at 2.2)	Number of supporting submissions
Option A	5
Option B	17
Option C	7
Total	29

Table 2: Landscaping options

Option	Number of supporting submissions
Retain existing planting types	6
Establish native species plantings	2
Total	8

3.3 Public comment within scope and Roads and Maritime responses (representative comments)

In favour of option A	In favour of option B	In favour of option C
<ul style="list-style-type: none"> Support option A for extra parking as parking is already difficult in Cronulla. Happy for green space next to Cronulla Surf Club (Mitchell Rd) to be utilised for parking. 	<ul style="list-style-type: none"> Option B is closest to existing parking Option B is already an existing car park. Timed parking will mean that more spaces will be turning over more frequently and available to more users. Option B potentially leads to more revenue for Council if users over-stay their visit in the timed parking bays. Option B provides 13 car spaces, almost completely offsetting the 15 spaces that will be lost. Option B is the only cost effective option. It is not sensible to go any other way. Support for the idea of providing additional 4-hour parking in Mitchell Road (option B). This will provide appropriate parking near Dunningham Park without taking space from units. 	<p>There were 7 submissions in support of option C, however, no reasons for support were expressed in the comments</p>
Opposed to option A	Opposed to option B	Opposed to option C
<ul style="list-style-type: none"> Option A is too far from where the affected car spaces are located to be of any utility. All green spaces and vegetation around Cronulla should be preserved and not converted into additional parking spaces. The green space/park abutting our complex that is proposed for additional car parking must be preserved. There are numerous mature trees that will be destroyed if this area is converted to a car park. There are numerous birds, including cockatoos and rosellas relying on the habitat provided by this park. Don't remove the green space. Once gone it's gone forever. Go with one of the other options. 	<p>No opposing reasons submitted</p>	<ul style="list-style-type: none"> Option C is too far from where the car spaces are located to be of any utility. The existing trees and landscaping will be adversely affected by Option C Residents will have additional car doors opening at all hours, including through the night. Bedrooms and balconies will be subjected to additional noise, pollution and disturbance. Option C will add to traffic congestion on Mitchell Rd, which is a narrow road. Option C is only a "partial car parking solution"

3.4 Out-of-scope submissions and Roads and Maritime responses

Issue	Comment summary	Roads and Maritime Services response
<p>Congestion and safety issues on local roads</p>	<p>A loss of much needed parking. Cronulla traffic is slowed by the pedestrian crossing on Gerrale St at Cronulla Beach, plus the entry to the car park where drivers stop near the entrance to let off passengers.</p> <p>The carpark entrance should be re-located to Laycock St roundabout. Gerrale St should be one-way southbound from Kingsway to the roundabout at Laycock St, which should be two-way. Cronulla St should be one-way from Laycock St through to Purley Place, where northbound traffic can take three different directions to disperse (Croydon St, Searle Rd and Wilbar Ave).</p> <p>Having two lanes from Elouera Rd onto Kingsway would help but a one-way road system for Cronulla is a must.</p>	<p>Roads and Maritime Services has responsibility for maintaining and improving state roads across Sydney. This includes Kingsway, which is why we are undertaking the intersection improvement.</p> <p>Gerrale Street and Laycock Avenue are the responsibility of Sutherland Shire Council, which maintains and operates local roads. Our project team will forward your comments to council and may also wish to contact the Council. You can also send an email to ssc@ssc.nsw.gov.au or write to Sutherland Shire Council, Locked Bag 17, Sutherland NSW 1499.</p> <p>Roads and Maritime Services is delivering the NSW Government's \$300 million Urban Pinch Points program and \$100 million Congestion & Safety program to ease congestion at critical 'pinch points' across the state road network and has identified improvements to Kingsway at its intersection with Elouera Road as delivering positive outcomes in this regard.</p>
	<p>The projected works are only a minor band aid and not worth the expenditure. The whole traffic management of flows into the South Cronulla area needs urgent attention, not just one intersection. This should have been done several years ago and is now critically overdue. When one observes the gridlock along Elouera road regularly as I do you soon realise the inadequacy of your current proposal. You need to, at least, remove all parking on the east side of Elouera Rd from Mitchell Rd to the Kingsway. This would permit dual right turn lanes plus a through lane along that part of the road. Anything less is useless. It would also eliminate another major bugbear for the through traffic on that part of the road – people waiting to park. The delay usually lasts for several traffic light sequences. Removing those parking places would eliminate that practice and provide three full lanes for moving traffic. It is time the priority was placed on moving traffic, NOT parking. I believe the works you have proposed is not worth the</p>	<p>The area is a popular destination for visitors to shops, restaurants, beaches and recreation areas, and there is a significant demand for parking.</p> <p>Roads and Maritime believes the intersection improvement strikes a balance between parking and traffic flow. The realignment of Elouera Road parking spaces from rear-to-kerb to parallel will allow for a new right-turn lane, improving traffic flow onto Kingsway and reducing congestion for through-traffic onto Gerrale Street. At the same time, businesses around Peryman Square and the Kingsway will continue to be serviced by the availability of nearby parking</p>

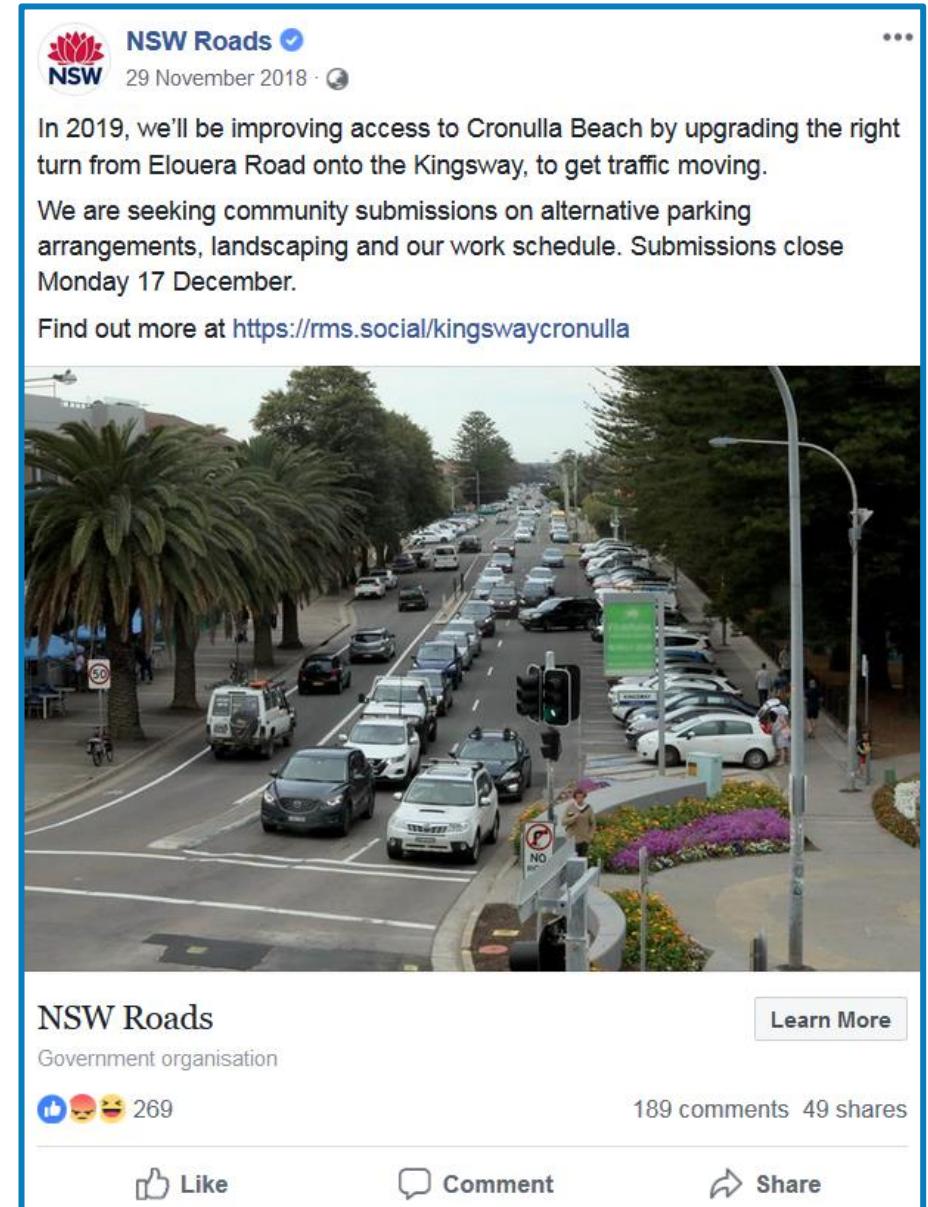
	time and trouble	
	The left turn from Wilbar onto Kingsway [is unsafe] due to parked cars and crossing pedestrians. Suggest a speed-bump on left-hand lane to slow westbound traffic going west. Also, no large vehicles (people movers) so can see over the top of parked cars.	Thank you for your comment. While this matter falls outside the scope of public submissions on the intersection improvement project, your comments have been forwarded to Roads and Maritime Services' Network Safety team for consideration.
Cycling safety and routes	Cronulla desperately needs a proper bike lane system so that people will feel safer on their bike. Gerrale St between Mitchell Rd and Nicholson Parade could be a 30km/h zone with calming so bikes can safely use this route. There needs to be an east-west bike lane from Cronulla to Sutherland. You'd remove a huge amount of traffic going in and out of Cronulla.	With regard to the cycle lane at the intersection of Elouera Road and Kingsway, its construction was made possible by the widening of the road on the approach to and through the intersection. The new lane links with the existing cycle routes on Elouera Road and Gerrale Street, which were established and are maintained by Sutherland Shire Council. For more information about east-west bike lanes please visit the project page for the Sutherland to Cronulla Active Transport Link: https://www.transport.nsw.gov.au/projects/current-projects/sutherland-to-cronulla-active-transport-link .
	The Leader newspaper mentions there will be "improved safety for cyclists by installing an on-road cycle lane". If this is to happen please ensure that the cycle lane is installed in accordance with state regulations. It appears the council has installed numerous 'cycle lanes' throughout the Shire by simply painting cycle pictograms all over the roads, some with a dividing line. Many such pictograms are in the middle of car lanes as if the whole road is for cyclists. According to the regulations, these cycle lanes are not legal as they lack the required signage denoting start and finish points yet the police still see fit to fine people for improper use of these 'cycle lanes'.	The cycle lane included in this project will conform to Australian Standards. The existing cycle routes on Elouera Road and Gerrale Street were established by and are the responsibility of Sutherland Shire Council.
	Heading south, is the blue highlighted 'widening' a lane or would that be space fit for cyclists? Heading north, will you mark the road with painted bicycle images to inform drivers the lane is shared? Cronulla is popular with cyclists of all types. This intersection is the gateway in and out of Cronulla for cafes, the popular loop around the peninsular and then out to Kurnell/the city. I'm a rider, the intersection is currently pretty good, I just want to make sure we're considered in the upgrade.	The construction of the cycle lane at the intersection of Elouera Road and Kingsway was made possible by the widening of the road on the approach to and through the intersection. The new lane links with the existing cycle routes on Elouera Road and Gerrale Street, which were established and are maintained by Sutherland Shire Council.

3.5 Social media posts and public comment

Roads and Maritime published a post about the intersection improvements to its Facebook page, which included a link to the project webpage and the formal submission channel. The post had an audience reach of 32,000 and attracted 189 comments. Most of the comments made general reference to local parking, congestion and development that were outside the scope of the community engagement.

The post was shared 49 times and attracted 269 reactions ('likes' or otherwise): 233 reactions were positive 36 were neutral-to-negative.

Facebook comments are not counted as submissions.



NSW Roads 29 November 2018

In 2019, we'll be improving access to Cronulla Beach by upgrading the right turn from Elouera Road onto the Kingsway, to get traffic moving.

We are seeking community submissions on alternative parking arrangements, landscaping and our work schedule. Submissions close Monday 17 December.

Find out more at <https://rms.social/kingswaycronulla>

NSW Roads
Government organisation

269 reactions (like, love, haha) | 189 comments | 49 shares

Like Comment Share

4. Engagement outcome and next steps

Roads and Maritime Services notes the strong community support for Option B as the preferred option to offset lost parking spaces on Elouera Road.

Roads and Maritime will support parking Option B in discussions with Sutherland Shire Council. Council is responsible for establishing and maintaining new parking spaces and the implementation of Option B is subject to Council approval.

Option B would change the existing untimed parking spaces on Mitchell Road, near Elouera Road, to four hour timed parking. This would offset the loss of 13 timed spaces from Elouera Road.

Roads and Maritime notes community support for the current type of Peryman Square garden bed plantings. We will convey these findings to the Council to inform its considerations about landscaping.

There were no comments submitted about the proposed work schedule. Roads and Maritime will work up to five nights a week at times where required to accelerate the work schedule to complete the project as soon as possible.

We will update the community about the timing and duration of work before it begins.

5. Appendices

5.1 Project notification



Intersection improvements on Kingsway and Elouera Road, Cronulla

Roads and Maritime Services | November 2018



Weekend traffic banking up to turn right from Elouera Road onto the Kingsway

The NSW Government is delivering this project as part of its program to ease congestion and improve travel times on Sydney's busiest corridors.

Road users currently experience significant delays turning right from Elouera Road onto Kingsway, particularly in peak periods. Currently, traffic at this intersection builds up, blocking the through-lane and creating a 'pinch point'.

We are upgrading this intersection to add an additional right-turn lane to help reduce congestion and fix this local pinch point.

When the work is complete, around seven extra cars will be able to fit in the new right turn lane, which increases capacity at this intersection to keep traffic moving.

We know the Bali memorial is important to your community. We assure you that our work will not affect the memorial or visitor access. The visual appeal of Peryman Square will also be maintained.

We have included an artist's impression of how the redesigned square might look (see page two), as well as a map of the project (see page three).

We are also seeking your feedback (see page four) on the work schedule, changes to parking arrangements on Elouera Road and landscaping options for Peryman Square.



Artist impression of Peryman Square

Project benefits

This upgrade will:

- Reduce congestion and improve travel times
- Reduce queuing times for vehicles turning right from Elouera Road into Kingsway
- Reduce the likelihood of right turning traffic banking up and blocking the Elouera Road through lane
- Improve traffic flow and travel time reliability for motorists
- Provide safe, active transport links for cyclists and walkers.

When is work starting?

To minimise the impact on the local community we are planning our work in stages.

The first stage of work will begin in early December and should be finished before **Sunday 23 December, 2018**.

We'll be relocating two accessible car parking spaces on Elouera Road further north, towards Mitchell Road and the pedestrian footpaths down towards Cronulla beach, resurfacing and asphaltting Kingsway (eastbound) and adjusting the kerb and pram ramps opposite Peryman Square.

We'll return to work in mid-2019, and aim to complete the full project by late 2019.

Work hours for December 2018

We will be on site between **7am and 6pm, Monday to Friday, for 20 day shifts**. We will also be working **15 night shifts, between 8pm and 5am from Sunday to Thursday**.

Work will be carried out from **Sunday 9 December** until **Sunday 23 December 2018**, weather permitting.

Our work may be noisy at times, but we will do everything we can to minimise its impact, including completing the noisier tasks before **midnight**.

Traffic changes

There will be temporary traffic changes during work hours, to ensure the safety of pedestrians, motorists and workers.

Lane closures will be in place and may affect travel times. Please keep to speed limits and follow signs and traffic controllers' directions. For the latest traffic updates, call **132 701**, visit livetraffic.com or download the Live Traffic NSW App.

Street parking in the work zone will be temporarily unavailable during shift hours. We will also be parking vehicles on nearby side streets before and after shifts, which will affect available street parking during this time.

Work happening in 2019

- Moving the traffic lights at the entrance of Peryman Square
- Establishing the new Peryman Square entrance
- Installing an on-road cycle lane to connect Elouera Road with the existing Gerrale Street cycle lane
- Changes to existing parking spaces on Elouera Road
- Utility and drainage work
- Road resurfacing, linemarking and asphaltting.

What is a 'pinch point'?

A pinch point is a traffic congestion point, either at an intersection or on a short length of road, where a traffic bottleneck exists. They cause travel delays at these spots and on the wider road network.

Delivering for the residents of Sutherland

With approximately 20,000 motorists using Kingsway each day, this corridor is crucial to keeping people moving around Greater Sydney. However, it has a number of 'pinch points' that we are working hard to improve.

In 2018, the NSW Government invested nearly \$5 million in three pinch point projects to ease congestion and improve journey times along Kingsway. We completed intersection upgrades at:

- Kingsway and Woolooware Road, Woolooware
- Kingsway and Gannons Road, Caringbah
- Kingsway and President Avenue, Caringbah.

Combined, these projects have saved peak period road users nearly six hours a year travelling on Kingsway between Caringbah and Cronulla.

Intersection improvements on Kingsway and Elouera Road, Cronulla



Intersection Improvements on Kingsway and Elouera Road, Cronulla | 3

Give us your feedback

We are seeking your feedback on alternative parking arrangements, landscaping at Peryman Square and our work schedule. More information is below. Please submit your comments or suggestions on these topics by **Monday 17 December 2018**.

Alternative parking arrangements

The widening of Elouera Road will affect up to 15 car parking spaces. We are working with Sutherland Shire Council to ensure we offset as many of these spaces as we can. We are asking for your feedback on proposed alternative parking arrangements, which could include:

- Converting existing green space at the rear of the Mitchell Road car park. This would fully offset the loss of the 15 Elouera Road parking spaces.
- Change the existing untimed parking spaces on Mitchell Road, near Elouera Road, to four hour timed parking. This would offset the loss of 13 timed spaces from Elouera Road.
- Move parking spaces on Mitchell Road, from Burke Road south to Prince Street, from the west side of the road to the east side of the road. This would create an extra seven untimed spaces to partially offset the loss of parking on Elouera Road.



Landscaping work

The intersection widening may affect the position of existing garden beds at Peryman Square. We will be landscaping this area when work is complete and are seeking your feedback on preferences for retaining the garden beds and their plantings as they are today, or establishing new beds for native plants, shrubs and flowers.

Work schedule

We always aim to schedule our work to minimise disruption to traffic, limit noise and maintain access to places like beaches and businesses, which is why most of the intersection improvement work will take place in 2019. In order to complete the work as quickly as possible we are proposing to work up to **five nights and six days** a week. We welcome your comments on this proposal.

Speak to the project team

'Pop-up kiosk' outside Cronulla Post Office

Cronulla Mall
41 Cronulla Street
Cronulla

- Thursday, 6 December 4pm - 7pm
- Saturday, 8 December 10am - 1pm

Contact

If you have any questions please contact our Project Manager, Jimi Edwards.

1800 572 004

pinchpoint@rms.nsw.gov.au

Pinch Points Program Project Team,
Roads and Maritime Services,
PO Box 973, Parramatta, NSW, 2124



If you need help understanding this information, please contact the Translating and Interpreting Service on 131 450 and ask them to call us on 1800 572 004



November 2018
RMS. 18.1119

Privacy Roads and Maritime Services ("RMS") is subject to the Privacy and Personal Information Protection Act 1998 ("PIP Act"), which requires that we comply with the Information Privacy Principles set out in the PIP Act. All information in correspondence is collected for the sole purpose of assisting in the delivery of this project. The information received, including names and addresses of respondents, may be published in subsequent documents unless a clear indication is given in the correspondence that all or part of that information is not to be published. Otherwise RMS will only disclose your personal information, without your consent, if authorised by the law. Your personal information will be held by RMS at 27 Argyle Street, Parramatta. You have the right to access and correct the information if you believe that it is incorrect.



5.2 Appendix 2 – community notification distribution area



rms.work/kingswayelouera



1800 572 004



Pinch Points Program Project Team
Roads and Maritime Services
PO Box 973
Parramatta NSW 2124

March 2019
RMS.19.1180
ISBN: 978-1-925891-90-4