



Australian Government

**BUILDING OUR FUTURE**



# **M1 Pacific Motorway, Weakleys Drive and John Renshaw Drive intersection upgrade**

## **Community Consultation Report – Strategic design**

September 2015



THIS PAGE LEFT INTENTIONALLY BLANK

## Executive summary

This Community Consultation Report provides a summary of the community consultation carried out in May and June 2015 by Roads and Maritime Services to support the strategic design display for the intersection upgrade at M1 Pacific Motorway, Weakleys Drive and John Renshaw Drive, Beresfield.

The proposal involves replacing the existing roundabout with traffic lights to improve traffic flow, travel times and safety for motorists at the intersection.

The proposal was displayed between 18 May and 14 June 2015. During the display 42 submissions were received from the community and stakeholders. The majority of feedback was generally appreciative of the need for the project and supportive of the proposal.

Key issues raised include:

- Traffic congestion
- Proposed design
- Established Driver Reviver operation at the intersection.

We will consider these issues in developing the concept design.

The community also provided feedback on road user safety and the wider road network, reinforcing the importance of this intersection to local and regional road networks, and the Sydney to Brisbane corridor.

## The decision

We will consider and address community and stakeholder feedback when developing the concept design for the M1 Pacific Motorway, Weakleys Drive and John Renshaw Drive intersection upgrade.

## Contents

Executive summary .....	3
The decision .....	3
Introduction.....	5
Background.....	5
The proposal.....	5
Consultation approach .....	6
Consultation objectives.....	6
Values.....	6
Consultation summary .....	8
Overview.....	8
Recommendations.....	12
Next steps.....	13
Appendix A: Advertised notice 18 and 20 May 2015.....	14
Appendix B: Media release 18 May 2015.....	15
Appendix C: Community update May 2015.....	17
Appendix D: Community update May 2015 letterbox distribution area .....	22
Appendix E: Display poster .....	25

## Figures and tables

Table 1 .....	7
Table 2.....	8

## Introduction

### Background

Roads and Maritime Services is planning an upgrade of the M1 Pacific Motorway, Weakleys Drive and John Renshaw Drive intersection to improve traffic flow, travel times and road safety.

Our objectives of the project are to:

1. Improve freight efficiency and commuter movement at the intersection of the M1 Pacific Motorway and Weakleys Drive, which is an important component of the land transport network between Sydney and Brisbane
2. Ensure compatibility with the proposed M1 Pacific Motorway extension to Raymond Terrace project, both from a constructability and value management perspective
3. Improve safety at the intersection by reducing the risk of crashes
4. Achieve best value for money over the project life cycle.

The proposal is part of the Australian and NSW governments' jointly funded M1 Pacific Motorway Productivity Package. The package of works includes upgrading the M1 between the Tuggerah and Doyalson interchanges and between the Kariong and Somersby interchanges.

The intersection of the M1 Pacific Motorway, Weakleys Drive and John Renshaw Drive forms an important connection between the M1 Pacific Motorway, the Pacific and New England highways and local industrial and commercial precincts.

Preliminary investigations for this upgrade included ground surveys, geotechnical investigations, flora and fauna studies and identifying heritage issues.

### The proposal

The proposed upgrade includes:

- Replacing the roundabout with traffic lights
- Two through lanes on all approaches
- Extending the second northbound lane on Weakleys Drive to the Enterprise Drive roundabout
- Right turn lanes on all approaches, including two from the M1 Pacific Motorway to John Renshaw Drive
- Left turn lanes on all approaches
- On and off-road provision for cyclists
- Future provision for pedestrian crossings when required.

The proposal requires road widening into the informal car park on the southwest corner of the intersection, which operates as a Driver Reviver facility during holiday periods. We are investigating alternative sites for this facility.

The proposed upgrade would involve a range of construction activities that may be disruptive for motorists and nearby businesses. These impacts may include:

- Temporary traffic disruption, increased delays and changed conditions at the intersection
- Small reduction in surrounding native vegetation
- Loss of the informal car park on the southwest corner
- Reduced road work speed zones
- Some night work involving lights and construction noise.

We will endeavour to work with the community to minimise impacts throughout project delivery.

## Consultation approach

### Consultation objectives

The consultation objectives were to:

- Inform the community and stakeholders of the proposal and possible impacts
- Seek feedback on the proposal and issues for consideration by Roads and Maritime in developing the concept design
- Build a database of community members and stakeholders who would like to stay informed about the project.

### Values

Our values underpin our decisions and behaviours when working with customers, colleagues, stakeholders and partners.

1. **Customer focus** – We place the customer at the centre of everything we do
2. **Collaboration** – We value each other and create better outcomes by working together
3. **Solutions** – We deliver sustainable and innovative solutions to NSW's transport needs
4. **Integrity** – We take responsibility and communicate openly
5. **Safety** – We prioritise safety for our people and our customers.

## How consultation was carried out

We consulted the community and stakeholders in May and June 2015 on the design to seek comment, feedback, ideas and suggestions for us to consider when developing the proposal.

Community members and stakeholders were encouraged to provide their feedback in person, by mail, email or phone contact with the project team.

The communication and consultation activities carried out are listed in Table 1 below.

**Table 1**

Local newspaper advertisements	<ul style="list-style-type: none"> <li>• Newcastle Herald on Monday 18 May 2015</li> <li>• Maitland Mercury on Monday 18 May 2015</li> <li>• Cessnock Advertiser on Wednesday 20 May 2015</li> <li>• A copy of the advertisement is available at <b>Appendix A</b>.</li> </ul>
Media activities	<ul style="list-style-type: none"> <li>• A media release announcing the public display and inviting comments was issued on 18 May 2015.</li> <li>• A copy of the media release is available at <b>Appendix B</b>.</li> </ul>
Community update	<ul style="list-style-type: none"> <li>• Delivered to 3200 properties including residences and businesses in Beresfield, Tarro and parts of Thornton and Black Hill. A distribution map is available at <b>Appendix C</b>.</li> <li>• Direct mailed to key stakeholders including emergency services, major landowners, Newcastle, Cessnock and Maitland councils and the Morisset Lions Club (operators of the Driver Reviver)</li> <li>• A copy of the community update is available at <b>Appendix D</b>.</li> </ul>
Webpage	<ul style="list-style-type: none"> <li>• The project webpage was updated on 18 May 2015 and included project information and the community update in PDF format.</li> <li>• The project URL is <a href="http://www.rms.nsw.gov.au/projects/hunter/m1-pacific-motorway-weakleys-drive-intersection-upgrade/index.html">http://www.rms.nsw.gov.au/projects/hunter/m1-pacific-motorway-weakleys-drive-intersection-upgrade/index.html</a></li> </ul>
Information session	<ul style="list-style-type: none"> <li>• A drop-in information session was held from 9am to 12pm on Saturday 30 May 2015 at East Maitland Library. Ten people attended.</li> </ul>
Static displays	<ul style="list-style-type: none"> <li>• Project posters and community updates were displayed during the comment period at Roads and Maritime Motor Registry offices at Cessnock, Wallsend, Raymond Terrace and Newcastle; and Service NSW Centre, East Maitland.</li> <li>• A copy of the poster is available at <b>Appendix E</b>.</li> </ul>
Stakeholder briefings and meetings	<ul style="list-style-type: none"> <li>• Briefings were held with key stakeholders including the Morisset Lions Club Driver Reviver operating committee. Members of the project team also spoke at the Morisset Lions Club members meeting on 6 June 2015.</li> </ul>

## Consultation summary

### Overview

The proposal was displayed between 18 May and 14 June 2015 with 42 submissions received about a range of issues from individual community members and motorists, including potentially affected property owners and business operators in the area. The submissions were provided as:

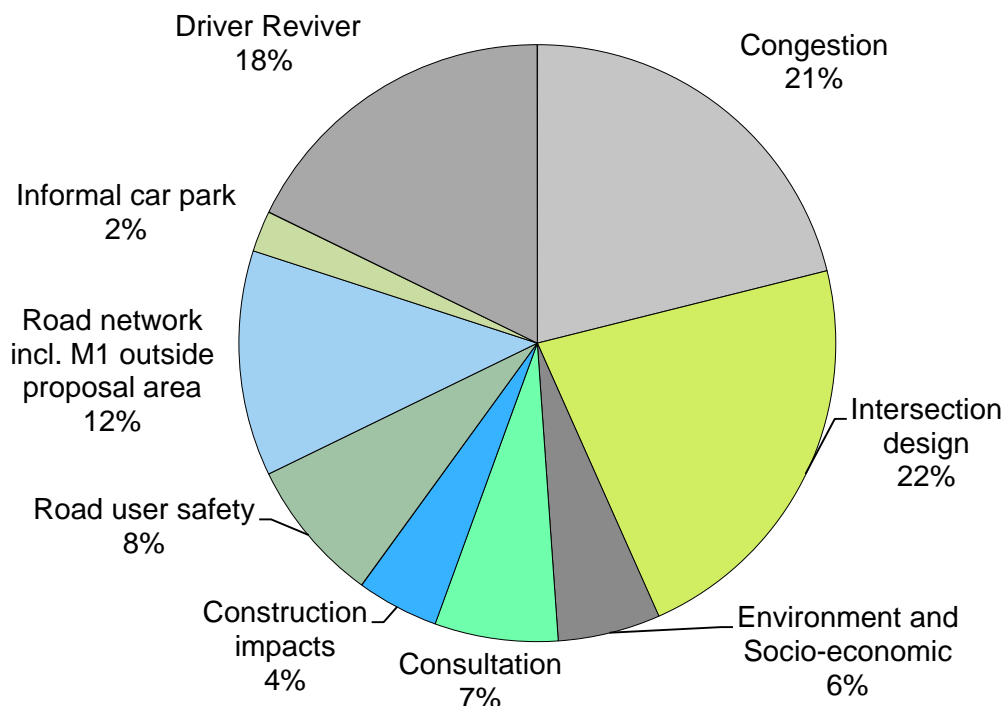
- 18 written submissions
- 3 telephone calls
- 21 discussions at the information session and Morisset Lions Club meeting.

The majority of feedback was generally appreciative of the need for the project and supportive of the proposal. A total of 16 issues were raised in the feedback received. The majority of submissions contained multiple issues of interest or concern. The three most common issues raised by stakeholders related to:

- Intersection design (22%)
- Congestion, including measures proposed to reduce average waiting times at the intersection (21%)
- Driver Reviver operation (18%)

It is important to note we follow issues based decision making. This means that although preferences on options are noted, we examine the issues raised throughout the consultation period using the fact based assessment process to assist in finalising the concept design and preparing the Review of Environmental Factors (REF).

**Figure 1 – Issues raised in community and stakeholder feedback**





**Table 2**

<b>Issue category</b>	<b>Number of comments</b>	<b>Issues raised</b>	<b>Roads and Maritime response</b>
<b>Construction impacts</b>	4	Construction start and duration.	Construction is expected to start about one year from the Review of Environmental Factors determination.  Subject to planning approval, the project will be built by the end of 2019.
		Safety concerns due to road users driving at high speed through the work zone.	Road signs, notices and LiveTraffic.com will notify road users of construction work and traffic changes to ensure driver and road worker safety.
<b>Consultation</b>	6	Support for ongoing consultation and provision of project notifications throughout the project.	Support for ongoing consultation has been noted. We will continue to work with the community and stakeholders throughout project planning and construction to keep the community informed, understand issues and minimise potential impacts. This includes providing directly impacted stakeholders with advance notice of work activities.
<b>Driver Reviver</b>	16	Concern for the existing Driver Reviver service provided at the intersection.	The importance of maintaining this service for road users and the Lions Club of Morisset is noted.  A new location is being investigated and the outcome will be communicated to the club and the wider community.
<b>Environmental impacts</b>	5	Concern the proposal may impede access to local business and residential property.	The existing access road to the former Boral site on the west side of M1 will be permanently closed as part of the upgrade.  We will work with local businesses and property owners to maintain access to all other properties where possible during construction.  Further impacts to property access and businesses will be investigated as a part of the Review of Environmental Factors.  The project involves extending two lanes to Enterprise Drive from the intersection. This would improve westbound traffic flow along this road

Issue category	Number of comments	Issues raised	Roads and Maritime response
			and improve access to the local industrial estate. The proposed layout also allows for planned growth and network use in the area.
		Concern the proposal and construction process may harm the local ecology.	<p>We will assess potential impacts to the natural environment as part of the Review of Environmental Factors. We intend to avoid potential impacts and, where unavoidable, apply management measures.</p> <p>The Review of Environmental Factors will be published on the project website.</p>
		Concern operational road noise may worsen as a result of the proposal.	<p>We will assess the potential for any increased noise created by vehicles using the intersection as part of the Review of Environmental Factors.</p> <p>Noise investigations will consider existing levels and predicted noise levels.</p> <p>Noise mitigation measures will be dependent on Roads and Maritime noise guidelines at time of construction.</p>
<b>Informal parking</b>	2	Concern about informal parking that occurs at the intersection.	<p>The proposal takes into account vehicles parking on the roadside at the intersection.</p> <p>A formal off road parking facility near the intersection will be considered in the concept design stage.</p>
<b>Proposed intersection design</b>	20	Suggestions for alternative design details including different roundabout and traffic management options.	<p>The proposed design was selected from a wide range of options as it is compatible with future upgrades including the proposed M1 Pacific Motorway extension to Raymond Terrace.</p> <p>We will continue to refine the proposed design, which takes into account suburban growth in the locality and future road and network upgrades.</p> <p>North-south and east-west traffic flow, local industrial areas, current and future resident populations will</p>

Issue category	Number of comments	Issues raised	Roads and Maritime response
			continue to be considered. Australian road design and road user safety standards will apply to all aspects of the design and traffic management options.
		Suggestions that a flyover from the M1 Pacific Motorway heading northbound onto John Renshaw Drive would be a better option.	<p>The proposed design was selected from a wide range of options. One of these options included a flyover.</p> <p>Investigations showed a flyover and/or other major structures would constrain future upgrade options on the road network.</p> <p>The proposed design improves existing traffic conditions and maintains future flexibility.</p>
		Concern the northbound approach to the intersection from the M1 will get congested.	<p>The proposed design provides five lanes on the M1 Pacific Motorway northbound approach to the intersection and dedicated left turn lanes in each direction.</p> <p>Traffic congestion and road user safety will be improved by providing dedicated lanes for turning and straight through travel.</p>
		Suggestions for road signs and Intelligent Traffic Systems (ITS) to improve traffic congestion and safety.	Additional road signs approaching the intersection and ITS signal safety measures, such as underground traffic sensors and timing of signal phases, will be considered.
<b>Road network</b>	11	Suggestions for the road network, including M1 Pacific Motorway, outside proposal area.	Suggestions for M1 projects outside the proposal area will be shared with appropriate staff at Roads and Maritime.
<b>Road user safety</b>	7	Concern for road user safety based on current rate of accidents at the intersection.	<p>Safety for road users is an important consideration when planning and delivering road projects.</p> <p>The proposal will provide traffic lights to improve safety for all road users by controlling traffic movements through the intersection.</p>

Issue category	Number of comments	Issues raised	Roads and Maritime response
Traffic congestion	19	Concerns about current congestion at the intersection.	<p>The existing two lane roundabout is used by about 4000 vehicles per hour in peak periods and cannot effectively cater for the current level of demand.</p> <p>The proposal aims to ease traffic congestion and improve travel times by providing additional traffic lanes and more capacity at the intersection.</p> <p>The proposal also includes traffic lights to control traffic movements and distribute traffic more evenly.</p> <p>Modelling of predicted traffic volumes and travel direction shows the proposed design will provide improvements to travel times through the intersection and surrounding network.</p>
		Perception traffic lights will make traffic queues worse.	<p>Traffic lights will ease congestion at peak times and improve flows through the intersection by distributing traffic more evenly.</p> <p>Traffic management measures including traffic lights, dedicated turning lanes and advance road signs will improve safety and travel times.</p> <p>Modelling of predicted traffic volumes and travel direction shows the proposed design will provide improvements to travel times through the intersection and surrounding network.</p>

## Recommendations

We will assess the potential of appropriate Intelligent Transport System (ITS) and road sign measures to enhance intersection capacity, improve travel times and road user safety.

We will investigate project noise impact and environmental impacts to avoid, mitigate or manage identified issues.

We will investigate relocation options for the Driver Reviver operation to maintain a safe environment for road users and volunteers during holiday peak times.


A formal off road parking facility near the intersection will be considered in the concept design stage.

## **Next steps**


We have considered all feedback and will ensure that concerns raised by the community and stakeholders are appropriately addressed when developing the concept design and Review of Environmental Factors.

We will continue to keep the community and stakeholders informed as the project progresses.

## Appendix A: Advertised notice 18 and 20 May 2015



Australian Government



The new state  
of business

### M1 Pacific Motorway upgrade

#### Weakleys Drive and John Renshaw Drive intersection at Beresfield

Roads and Maritime Services is planning to upgrade the M1 Pacific Motorway, Weakleys Drive and John Renshaw Drive intersection at Beresfield by replacing the existing roundabout with traffic lights to improve safety, traffic flow and travel times.

To view the proposed design and community update go to **rms.nsw.gov.au** or you can visit Roads and Maritime Motor Registries in Wallsend, Cessnock, Raymond Terrace and the Service NSW Centre at Green Hills.

Please provide your feedback on the preferred option by **Sunday 14 June 2015**. We will consider your feedback when carrying out the concept design and the environmental impact assessment.

We also invite you to meet our team and provide feedback at our community information session:

**When:** Saturday 30 May from 9am to noon

**Where:** East Maitland Library  
3 Garnett Road, East Maitland

Drop in any time. We look forward to seeing you there.

**For more information please contact  
Theodoros Stephanou on (02) 4379 7015  
or visit rms.nsw.gov.au**

Z03710

**Appendix B: Media release 18 May 2015**

18 MAY 2015

## HAVE A SAY ON THE M1 PACIFIC MOTORWAY INTERSECTION UPGRADE AT BERESFIELD

The community is invited to have a say on the proposed design for the M1 Pacific Motorway, John Renshaw Drive and Weakleys Drive intersection upgrade at Beresfield.

Roads and Maritime Services is planning to upgrade the intersection to improve traffic flow, travel times and safety for all road users.

The proposal is part of the Australian and NSW governments' jointly funded M1 Pacific Motorway Productivity Package which includes upgrading the motorway between the Tuggerah and Doyalson interchanges and between the Kariong and Somersby interchanges.

The proposed upgrade involves replacing the existing roundabout with traffic lights to improve the capacity of the intersection for current and future traffic volumes.

The existing two lane roundabout is used by around 4000 vehicles per hour at weekday peak travel times and the improvements aim to increase capacity as volumes increase.

The intersection forms a critical connection between the M1 Pacific Motorway, the Pacific and New England highways and local industrial and commercial precincts.

Community members can view the proposal online at [www.rms.nsw.gov.au/projects](http://www.rms.nsw.gov.au/projects) or in hard copy at Roads and Maritime Motor Registries in Wallsend, Cessnock and Raymond Terrace or at the Service NSW Centre at Green Hills.

Community members are also invited to drop-in information sessions on Saturday 30 May between 9am and 12pm at East Maitland Library.

Written comments to the proposal are invited until Sunday 14 June, 2015.

Roads and Maritime will consider this feedback when carrying out the concept design and review of environmental factors.



**Appendix C: Community update May 2015**



Aerial view of the intersection, August 2014

## M1 Pacific Motorway upgrade at the Weakleys Drive and John Renshaw Drive intersection at Beresfield

Roads and Maritime Services is planning to upgrade the M1 Pacific Motorway, Weakleys Drive and John Renshaw Drive intersection at Beresfield. The proposal involves replacing the existing roundabout with traffic lights to improve traffic flow, travel times and safety for motorists.

Stakeholders and the community are invited to comment on the proposal by **14 June 2015**.

Roads and Maritime will consider this feedback when carrying out the concept design and review of environmental factors.

### Background

The M1 Pacific Motorway is an important link in the National Land Transport Network and is part of the Sydney to Brisbane corridor, which is one of the busiest transport corridors in Australia.

This intersection is the critical connection between the M1, Pacific Highway, New England Highway and local industrial and commercial precincts.

The existing two lane roundabout is used by about 4000 vehicles per hour in peak periods and cannot effectively cater for the current level of demand.

The proposal is part of the Australian and NSW governments' jointly funded M1 Pacific Motorway Productivity Package which also includes upgrading the M1 between the Tuggerah and Doyalson interchanges and between the Kariang and Somersby interchanges. More information about these projects is available at [rms.nsw.gov.au](http://rms.nsw.gov.au).

In addition, planning is underway for a future extension of the M1 Pacific Motorway to Raymond Terrace. The intersection proposal considers the potential impact of a future extension.

## The proposal

The proposed upgrade involves:

- Replacing the roundabout with traffic lights
- Two through lanes on all approaches
- Extending the two northbound lanes on Weakleys Drive to the Enterprise Drive roundabout
- Right turn lanes on all approaches, including two from the M1 to John Renshaw Drive
- Left turn lanes on all approaches
- On and off-road provision for cyclists
- Future provision for pedestrian crossings when required.

The proposal requires road widening into the informal car park on the southwest corner of the intersection, which operates as a Driver Reviver facility during holiday periods. Roads and Maritime is investigating alternate sites for the Driver Reviver.

## Benefits of the proposal

Key benefits of the proposal include:

- Improved traffic capacity and safety at the intersection
- Improved traffic flow and more reliable travel times through the intersection
- Compatibility with future upgrades across the road network, including the proposed extension of the M1 Pacific Motorway to Raymond Terrace.

## Construction impacts

The proposed upgrade would involve a range of construction activities that may be disruptive for motorists and nearby businesses. These impacts may include:

- Temporary traffic disruption, increased delays and changed conditions at the intersection
- Small reduction in surrounding native vegetation
- Loss of the informal car park on the southwest corner
- Reduced road work speed zones
- Some night work involving lights and construction noise.

## Involving the community and stakeholders

Roads and Maritime will work with the community and stakeholders during the planning process to understand issues and minimise potential impacts of the proposed upgrade.

Stakeholders and the community are invited to comment on the proposal by **14 June 2015**.

Roads and Maritime will consider the feedback received when developing the concept design and review of environmental factors.

## Next steps

Upcoming planning activities include:

- Community and stakeholder discussions
- Consultation with nearby businesses and residents
- Carrying out the concept design and review of environmental factors.

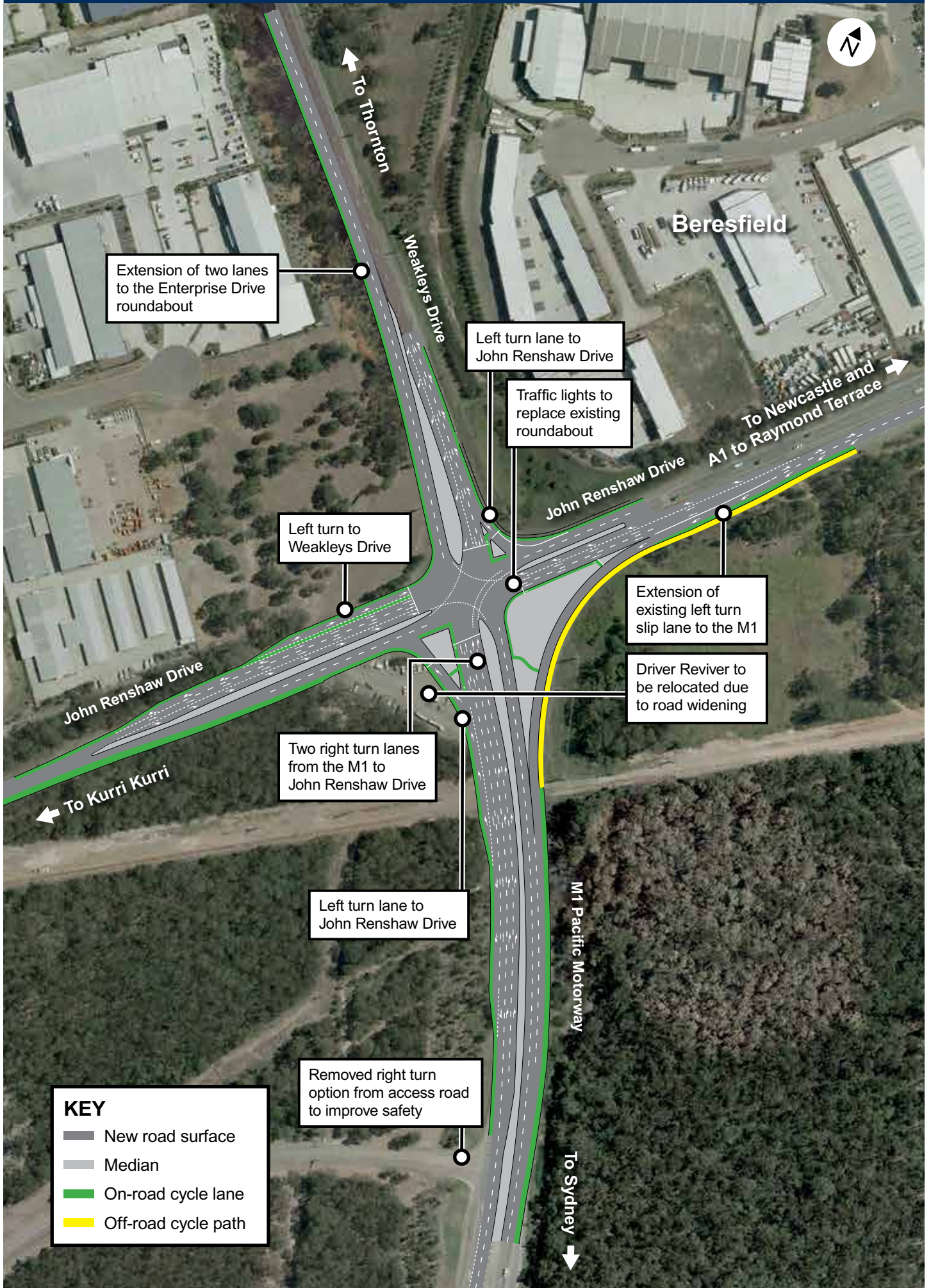
Subject to planning approval, the project would be constructed by 2019.

Afternoon queue on the M1 approaching the intersection, April 2015





# M1 Pacific Motorway upgrade at the Weakleys Drive and John Renshaw Drive intersection



## Project development process



### Please send us your feedback by:

#### Phoning:

Theodoros Stephanou  
Project Development Manager on  
(02) 4379 7015 (during business hours)

#### Emailing:

Hunter\_emails@rms.nsw.gov.au

#### Writing to:

Theodoros Stephanou  
Project Development Manager  
Roads and Maritime Services  
Locked Bag 2030  
Newcastle NSW 2300

Comments on the proposal are invited until  
**14 June 2015.**

### Community information session

Stakeholders and the community are invited to a drop-in information session on **Saturday 30 May 2015** between 9am and 12 noon at:

**East Maitland Library**  
**3 Garnett Road**  
**East Maitland**

Information is also available on the website at [rms.nsw.gov.au](http://rms.nsw.gov.au)



This document contains important information about road projects in your area. If you require the services of an interpreter, please contact the Translating and Interpreting Service on 131 450 and ask them to call the project team on 1300 660 275. The interpreter will then assist you with translation.



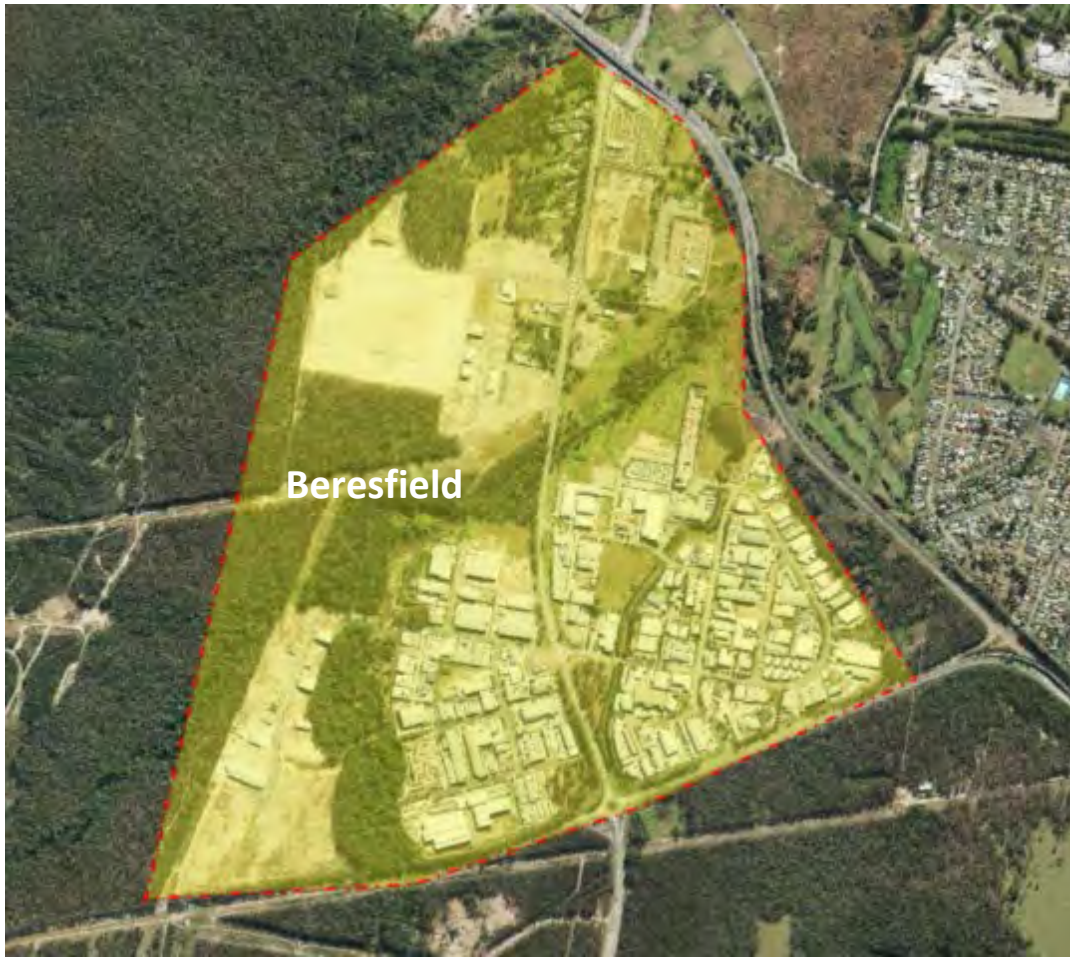
### Roads and Maritime Services

**Privacy:** Roads and Maritime Services ("RMS") is subject to the *Privacy and Personal Information Protection Act 1998* ("PIIP Act") which requires that we comply with the Information Privacy Principles set out in the PIIP Act.

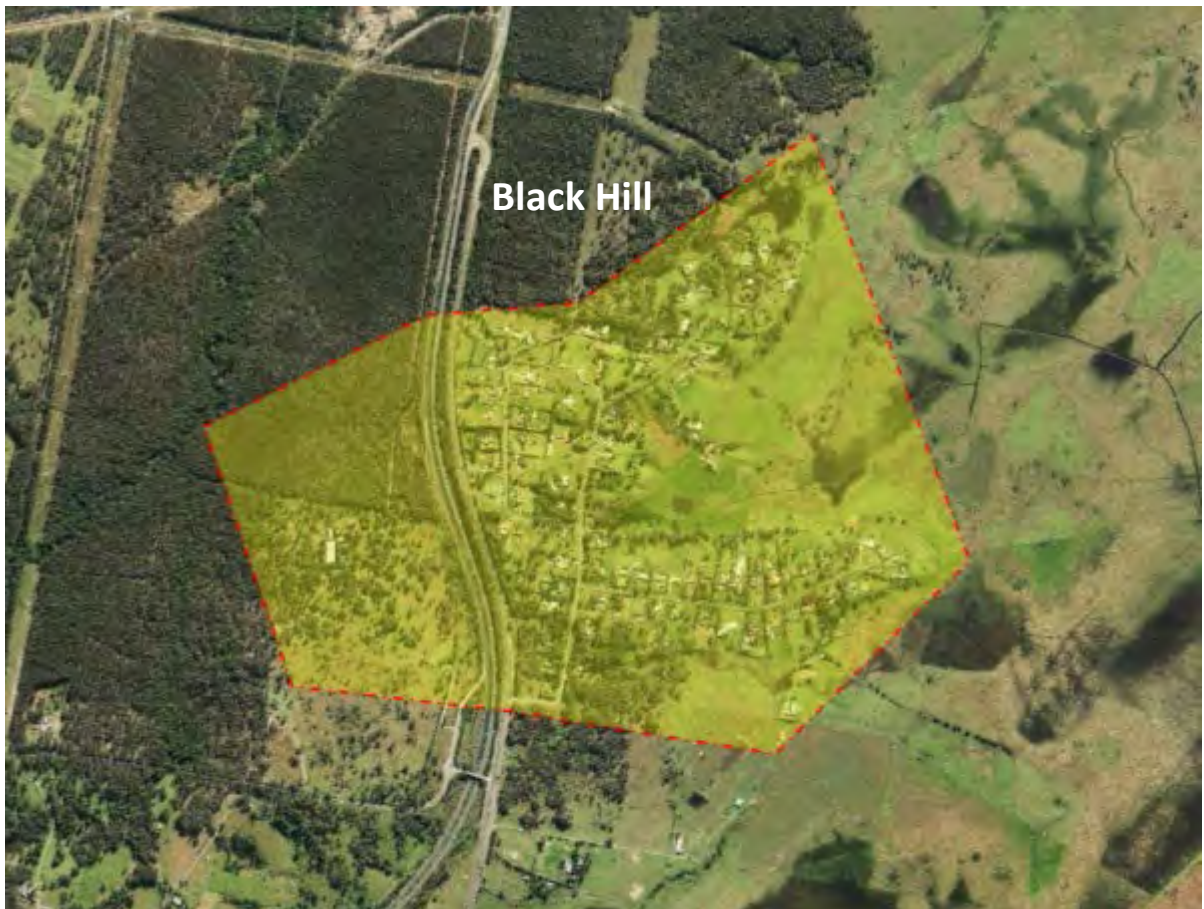
All information in correspondence is collected for the sole purpose of assisting in the assessment of this proposal. The information received, including names and addresses of respondents, may be published in subsequent documents unless a clear indication is given in the correspondence that all or part of that information is not to be published. Otherwise RMS will only disclose your personal information, without your consent, if authorised by the law. Your personal information will be held by Roads and Maritime Services at 59 Darby Street, Newcastle NSW 2300. You have the right to access and correct the information if you believe that it is incorrect.

## Appendix D: Community update May 2015 letterbox distribution area



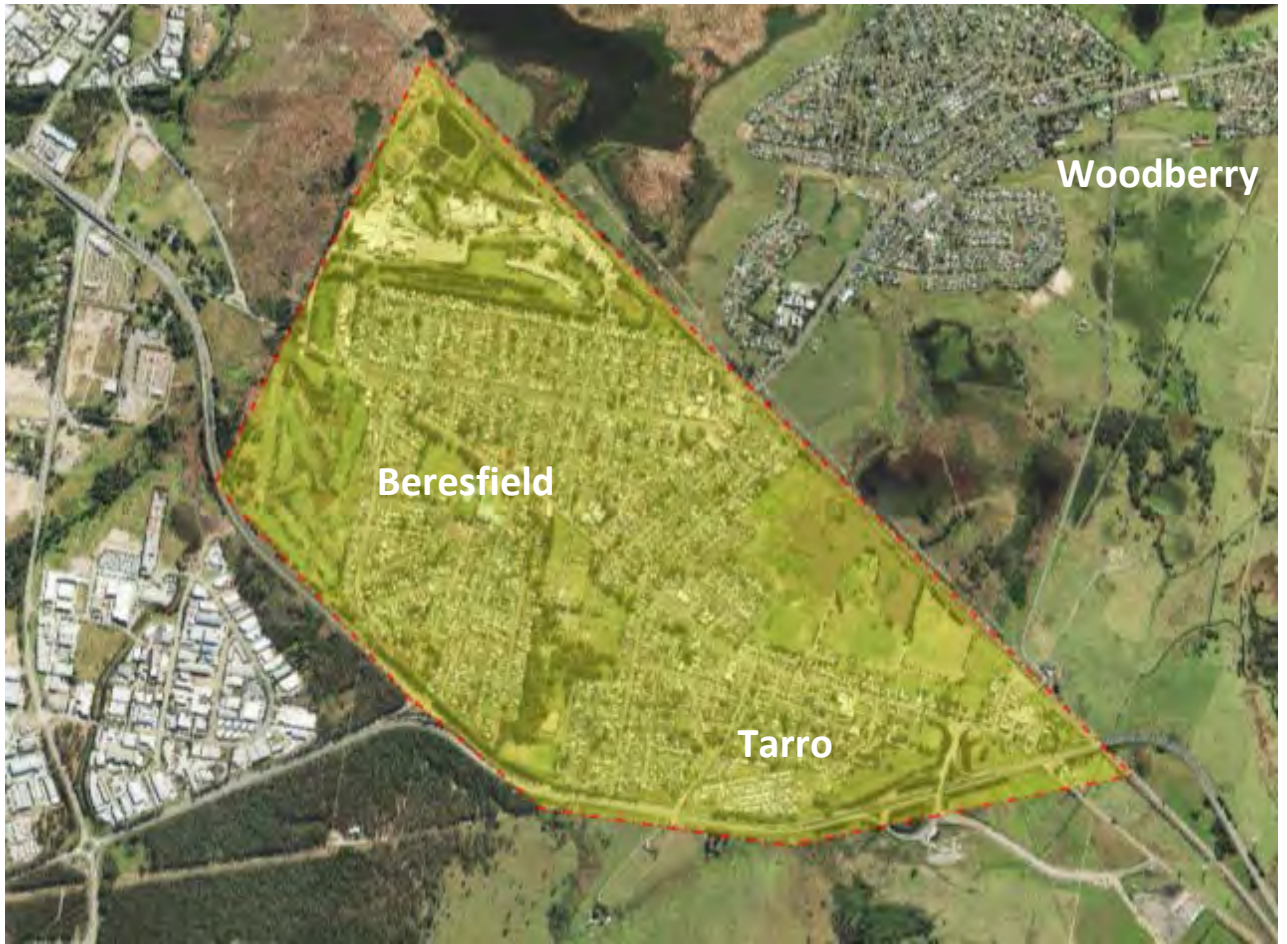


**Beresfield**



**Black Hill**







# Appendix E: Display poster



# M1 Pacific Motorway upgrade at the Weakleys Drive and John Renshaw Drive intersection at Beresfield

MAY 2015

Roads and Maritime Services is planning to upgrade the M1 Pacific Motorway, Weakleys Drive and John Renshaw Drive intersection at Beresfield. The proposal involves replacing the existing roundabout with traffic lights to improve traffic flow, travel times and safety for motorists.

The proposal is part of the Australian and NSW governments' jointly funded M1 Pacific Motorway Productivity Package which also includes upgrading the M1 between the Tuggerah and Doyalson interchanges and between the Kariiong and Somersby interchanges.

Feedback on the proposal is invited by **14 June 2015** and will be considered when developing the concept design and a review of environmental factors.

## Benefits of the proposal

Key benefits of the proposal include:

- Improved traffic capacity and safety at the intersection
- Improved traffic flow and more reliable travel times through the intersection
- Compatibility with future upgrades across the road network, including the proposed extension of the M1 Pacific Motorway to Raymond Terrace.

For further information and to provide feedback on the design contact the Project Development Manager, Theodoros Stephanou on **02 4379 7015** during business hours or via **Hunter\_emails@rms.nsw.gov.au**

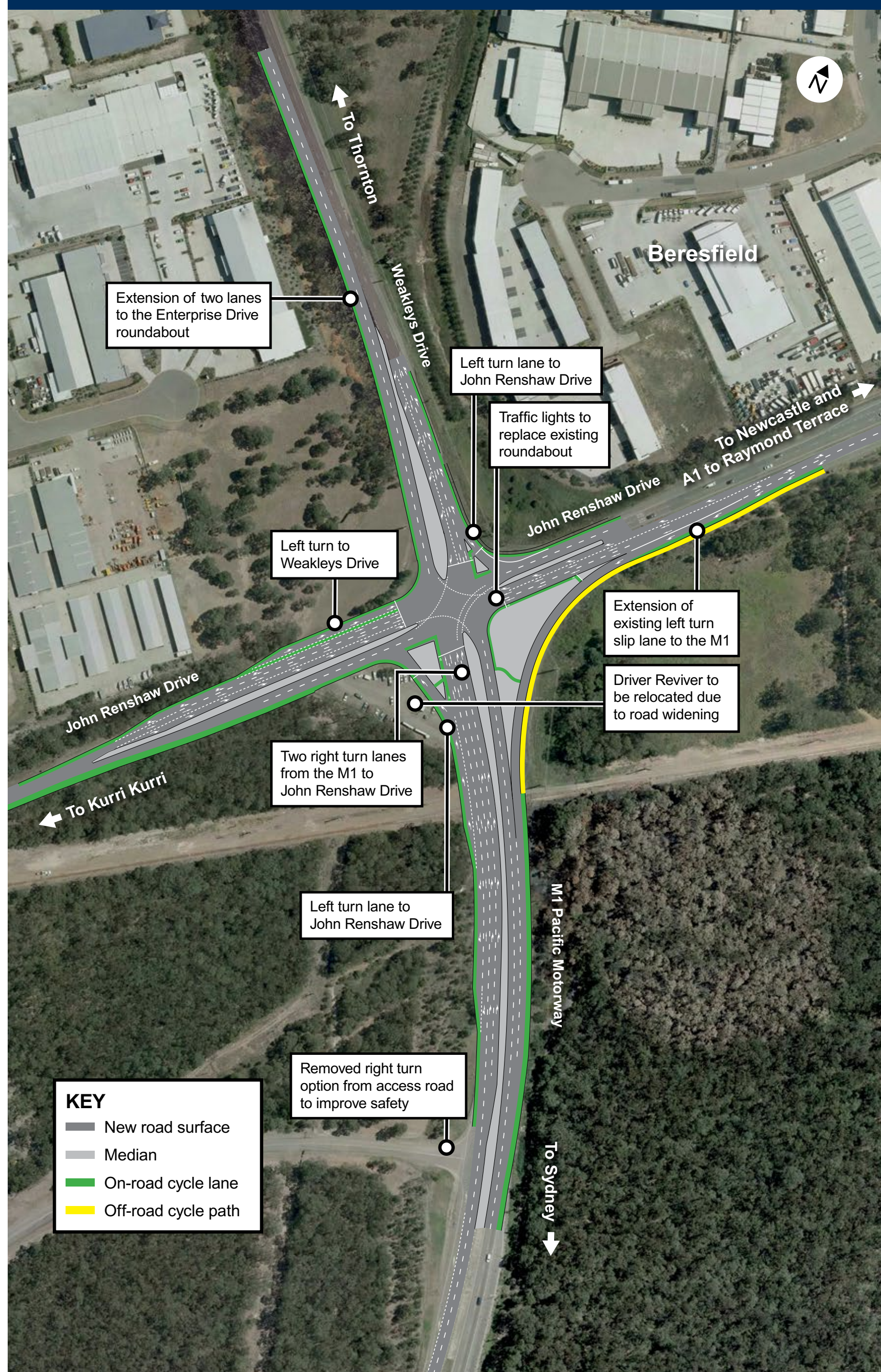
Information is also available on the Roads and Maritime website at **rms.nsw.gov.au**

## Community information session

Stakeholders and the community are invited to a drop-in information session for this project on **Saturday 30 May 2015** between **9am** and **12 noon** at

**East Maitland Library**  
**3 Garnett Road, East Maitland**

## M1 Pacific Motorway upgrade at the Weakleys Drive and John Renshaw Drive intersection







[www.rms.nsw.gov.au/projects](http://www.rms.nsw.gov.au/projects)



13 22 13



Customer feedback  
Roads and Maritime  
Locked Bag 928,  
North Sydney NSW 2059

October 2015  
RMS 15.355  
ISBN: 978-1-925357-87-5