

Appendix D

Consultation materials

Advertised notice 18 and 20 May 2015



Australian Government

BUILDING OUR FUTURE



**The new state
of business**

M1 Pacific Motorway upgrade

Weakleys Drive and John Renshaw Drive
intersection at Beresfield

Roads and Maritime Services is planning to upgrade the M1 Pacific Motorway, Weakleys Drive and John Renshaw Drive intersection at Beresfield by replacing the existing roundabout with traffic lights to improve safety, traffic flow and travel times.

To view the proposed design and community update go to **rms.nsw.gov.au** or you can visit Roads and Maritime Motor Registries in Wallsend, Cessnock, Raymond Terrace and the Service NSW Centre at Green Hills.

Please provide your feedback on the preferred option by **Sunday 14 June 2015**. We will consider your feedback when carrying out the concept design and the environmental impact assessment.

We also invite you to meet our team and provide feedback at our community information session:

When: Saturday 30 May from 9am to noon

Where: East Maitland Library
3 Garnett Road, East Maitland

Drop in any time. We look forward to seeing you there.

Z03710

**For more information please contact
Theodoros Stephanou on (02) 4379 7015
or visit rms.nsw.gov.au**

18 MAY 2015

HAVE A SAY ON THE M1 PACIFIC MOTORWAY INTERSECTION UPGRADE AT BERESFIELD

The community is invited to have a say on the proposed design for the M1 Pacific Motorway, John Renshaw Drive and Weakleys Drive intersection upgrade at Beresfield.

Roads and Maritime Services is planning to upgrade the intersection to improve traffic flow, travel times and safety for all road users.

The proposal is part of the Australian and NSW governments' jointly funded M1 Pacific Motorway Productivity Package which includes upgrading the motorway between the Tuggerah and Doyalson interchanges and between the Kariong and Somersby interchanges.

The proposed upgrade involves replacing the existing roundabout with traffic lights to improve the capacity of the intersection for current and future traffic volumes.

The existing two lane roundabout is used by around 4000 vehicles per hour at weekday peak travel times and the improvements aim to increase capacity as volumes increase.

The intersection forms a critical connection between the M1 Pacific Motorway, the Pacific and New England highways and local industrial and commercial precincts.

Community members can view the proposal online at www.rms.nsw.gov.au/projects or in hard copy at Roads and Maritime Motor Registries in Wallsend, Cessnock and Raymond Terrace or at the Service NSW Centre at Green Hills.

Community members are also invited to drop-in information sessions on Saturday 30 May between 9am and 12pm at East Maitland Library.

Written comments to the proposal are invited until Sunday 14 June, 2015.

Roads and Maritime will consider this feedback when carrying out the concept design and review of environmental factors.



Aerial view of the intersection, August 2014

M1 Pacific Motorway upgrade at the Weakleys Drive and John Renshaw Drive intersection at Beresfield

Roads and Maritime Services is planning to upgrade the M1 Pacific Motorway, Weakleys Drive and John Renshaw Drive intersection at Beresfield. The proposal involves replacing the existing roundabout with traffic lights to improve traffic flow, travel times and safety for motorists.

Stakeholders and the community are invited to comment on the proposal by **14 June 2015**.

Roads and Maritime will consider this feedback when carrying out the concept design and review of environmental factors.

Background

The M1 Pacific Motorway is an important link in the National Land Transport Network and is part of the Sydney to Brisbane corridor, which is one of the busiest transport corridors in Australia.

This intersection is the critical connection between the M1, Pacific Highway, New England Highway and local industrial and commercial precincts.

The existing two lane roundabout is used by about 4000 vehicles per hour in peak periods and cannot effectively cater for the current level of demand.

The proposal is part of the Australian and NSW governments' jointly funded M1 Pacific Motorway Productivity Package which also includes upgrading the M1 between the Tuggerah and Doyalson interchanges and between the Kariang and Somersby interchanges. More information about these projects is available at rms.nsw.gov.au.

In addition, planning is underway for a future extension of the M1 Pacific Motorway to Raymond Terrace. The intersection proposal considers the potential impact of a future extension.

The proposal

The proposed upgrade involves:

- Replacing the roundabout with traffic lights
- Two through lanes on all approaches
- Extending the two northbound lanes on Weakleys Drive to the Enterprise Drive roundabout
- Right turn lanes on all approaches, including two from the M1 to John Renshaw Drive
- Left turn lanes on all approaches
- On and off-road provision for cyclists
- Future provision for pedestrian crossings when required.

The proposal requires road widening into the informal car park on the southwest corner of the intersection, which operates as a Driver Reviver facility during holiday periods. Roads and Maritime is investigating alternate sites for the Driver Reviver.

Benefits of the proposal

Key benefits of the proposal include:

- Improved traffic capacity and safety at the intersection
- Improved traffic flow and more reliable travel times through the intersection
- Compatibility with future upgrades across the road network, including the proposed extension of the M1 Pacific Motorway to Raymond Terrace.

Construction impacts

The proposed upgrade would involve a range of construction activities that may be disruptive for motorists and nearby businesses. These impacts may include:

- Temporary traffic disruption, increased delays and changed conditions at the intersection
- Small reduction in surrounding native vegetation
- Loss of the informal car park on the southwest corner
- Reduced road work speed zones
- Some night work involving lights and construction noise.

Involving the community and stakeholders

Roads and Maritime will work with the community and stakeholders during the planning process to understand issues and minimise potential impacts of the proposed upgrade.

Stakeholders and the community are invited to comment on the proposal by **14 June 2015**.

Roads and Maritime will consider the feedback received when developing the concept design and review of environmental factors.

Next steps

Upcoming planning activities include:

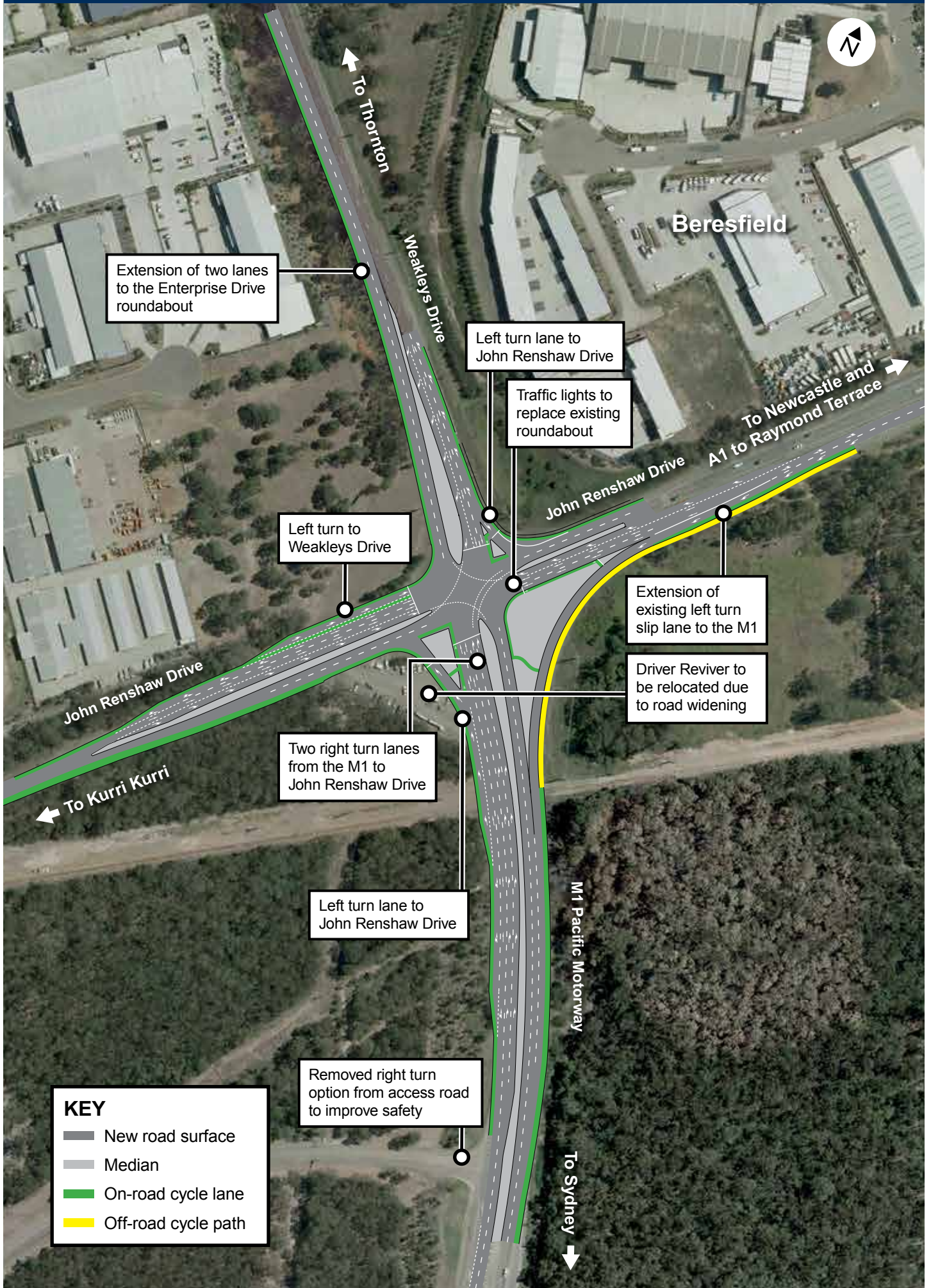
- Community and stakeholder discussions
- Consultation with nearby businesses and residents
- Carrying out the concept design and review of environmental factors.

Subject to planning approval, the project would be constructed by 2019.

Afternoon queue on the M1 approaching the intersection, April 2015



M1 Pacific Motorway upgrade at the Weakleys Drive and John Renshaw Drive intersection



Project development process



Please send us your feedback by:

Phoning:

Theodoros Stephanou
Project Development Manager on
(02) 4379 7015 (during business hours)

Emailing:

Hunter_emails@rms.nsw.gov.au

Writing to:

Theodoros Stephanou
Project Development Manager
Roads and Maritime Services
Locked Bag 2030
Newcastle NSW 2300

Comments on the proposal are invited until
14 June 2015.

Community information session

Stakeholders and the community are invited to a drop-in information session on **Saturday 30 May 2015** between 9am and 12 noon at:

East Maitland Library
3 Garnett Road
East Maitland

Information is also available on the website at rms.nsw.gov.au



This document contains important information about road projects in your area. If you require the services of an interpreter, please contact the Translating and Interpreting Service on 131 450 and ask them to call the project team on 1300 660 275. The interpreter will then assist you with translation.

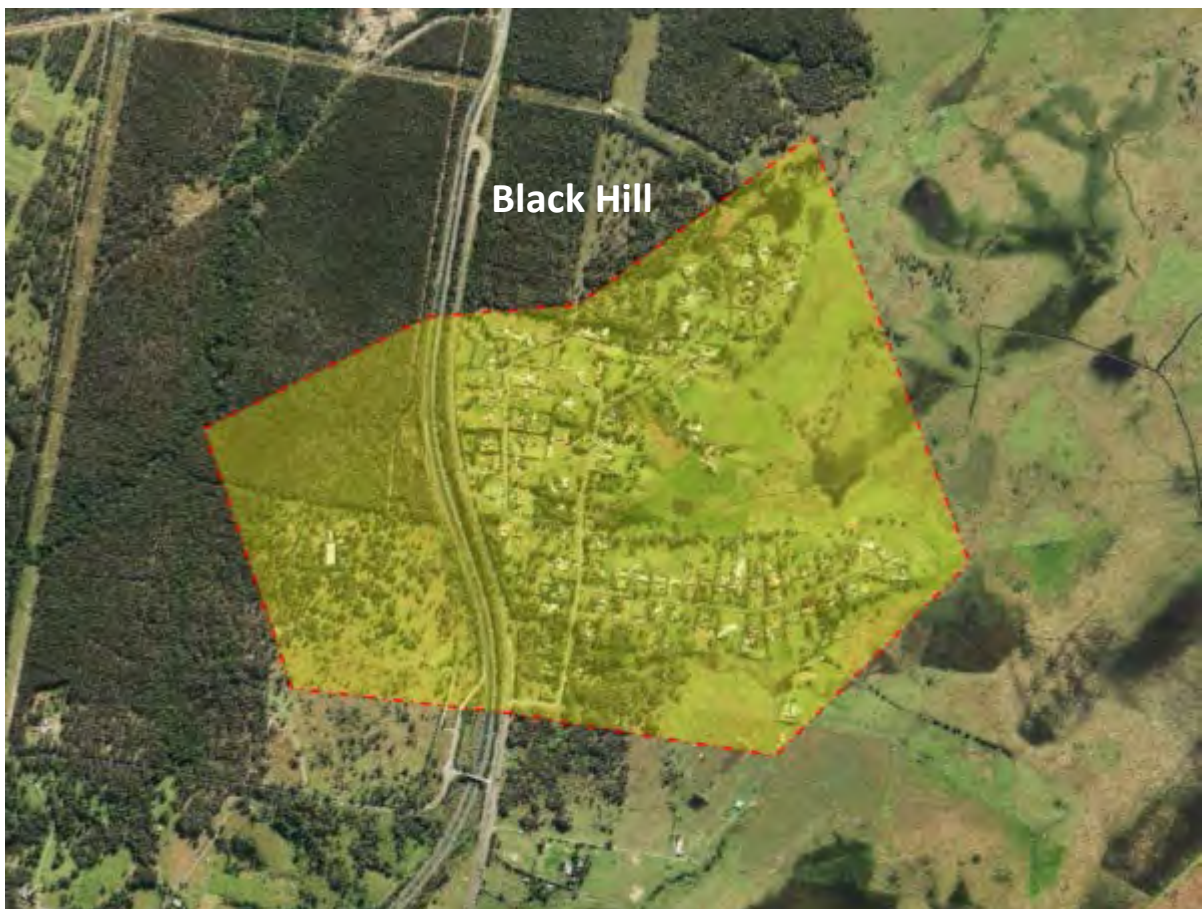
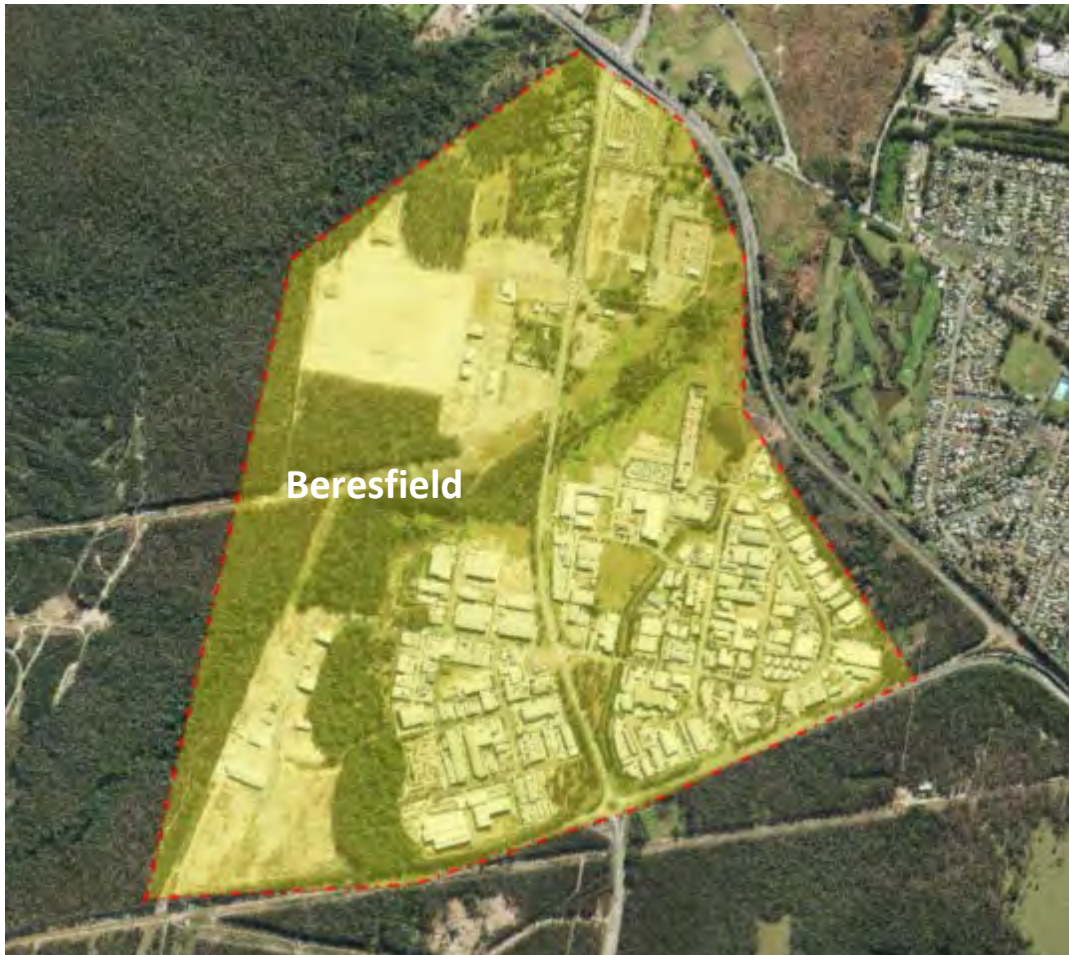


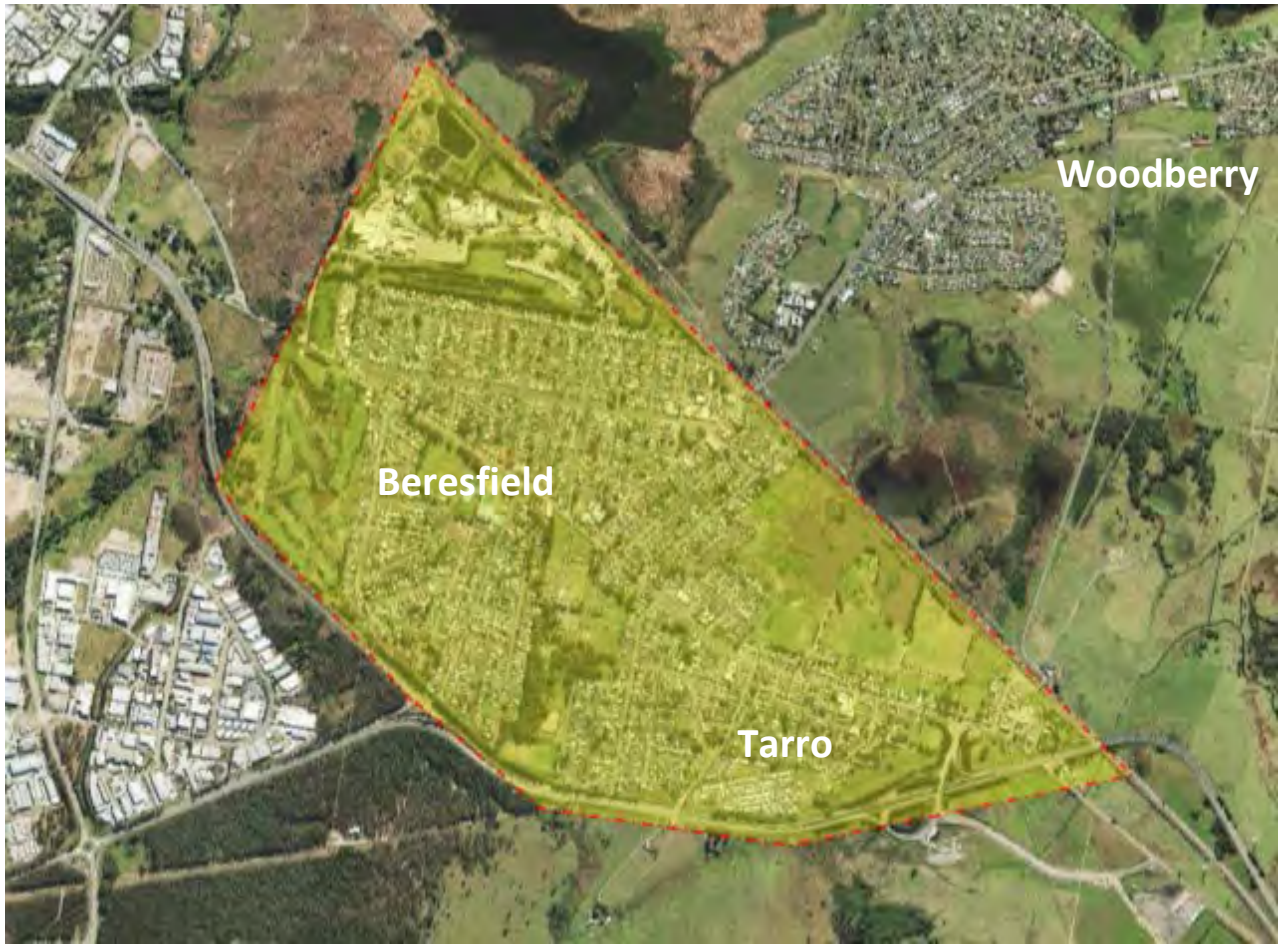
Roads and Maritime Services

Privacy: Roads and Maritime Services ("RMS") is subject to the *Privacy and Personal Information Protection Act 1998* ("PPIP Act") which requires that we comply with the Information Privacy Principles set out in the PPIP Act.

All information in correspondence is collected for the sole purpose of assisting in the assessment of this proposal. The information received, including names and addresses of respondents, may be published in subsequent documents unless a clear indication is given in the correspondence that all or part of that information is not to be published. Otherwise RMS will only disclose your personal information, without your consent, if authorised by the law. Your personal information will be held by Roads and Maritime Services at 59 Darby Street, Newcastle NSW 2300. You have the right to access and correct the information if you believe that it is incorrect.

Project update distribution area





M1 Pacific Motorway upgrade at the Weakleys Drive and John Renshaw Drive intersection at Beresfield

MAY 2015

Roads and Maritime Services is planning to upgrade the M1 Pacific Motorway, Weakleys Drive and John Renshaw Drive intersection at Beresfield. The proposal involves replacing the existing roundabout with traffic lights to improve traffic flow, travel times and safety for motorists.

The proposal is part of the Australian and NSW governments' jointly funded M1 Pacific Motorway Productivity Package which also includes upgrading the M1 between the Tuggerah and Doyalson interchanges and between the Kariong and Somersby interchanges.

Feedback on the proposal is invited by **14 June 2015** and will be considered when developing the concept design and a review of environmental factors.

Benefits of the proposal

Key benefits of the proposal include:

- Improved traffic capacity and safety at the intersection
- Improved traffic flow and more reliable travel times through the intersection
- Compatibility with future upgrades across the road network, including the proposed extension of the M1 Pacific Motorway to Raymond Terrace.

For further information and to provide feedback on the design contact the Project Development Manager, Theodoros Stephanou on **02 4379 7015** during business hours or via **Hunter_emails@rms.nsw.gov.au**
Information is also available on the Roads and Maritime website at **rms.nsw.gov.au**

Community information session

Stakeholders and the community are invited to a drop-in information session for this project on **Saturday 30 May 2015** between **9am** and **12 noon** at

East Maitland Library
3 Garnett Road, East Maitland

M1 Pacific Motorway upgrade at the Weakleys Drive and John Renshaw Drive intersection

