



Australian Government

**BUILDING OUR FUTURE**



# M1 Princes Motorway improvements Picton Road to Bulli Tops (Stage One)

December 2016

The Australian and NSW Governments have jointly committed \$84 million for improvements to the M1 Princes Motorway between Bulli Tops and Picton Road.

A preferred option and review of environmental factors has been completed for stage one of the project and are on display for community comment until **Friday 3 February 2017**.

## Background

The M1 Princes Motorway is the main road linking Sydney with the Illawarra and South Coast. It is a vital link for commuters, an important tourist route and a critical freight route for access to Port Kembla.

This section of the Princes Motorway carries around 37,000 vehicles per day, around 13 percent of which are heavy vehicles.

The steep alignment of the Motorway can cause road safety issues particularly in several sections where heavy vehicles struggle to maintain speed.

The first stage of the project will provide an additional lane in each direction of the M1 between Picton Road and Bellambi Creek.

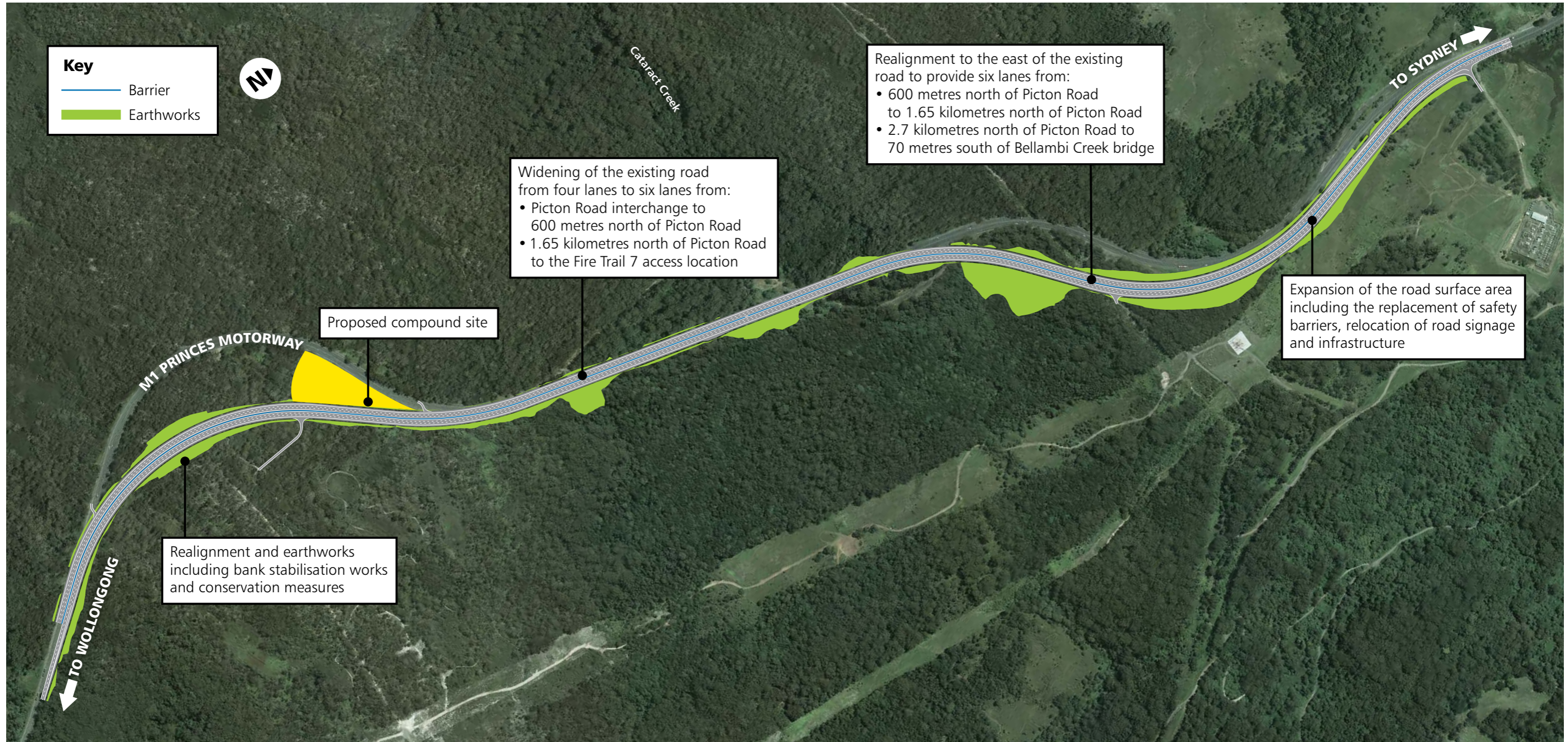
## The project

Roads and Maritime has investigated various options for stage one of the M1 Princes Motorway improvements. Based on a range of technical, environmental and social considerations we have developed a preferred option for the project.

The proposed option would involve the upgrade and widening of the Motorway to provide a six lane divided road between the Picton Road interchange and Bellambi Creek.



**Preferred option**



**Features of the project**

- Six lane divided road (three lanes in each direction)
- Widening and realignment of the existing Motorway
- Building of wider shoulders
- Relocation of infrastructure and utilities
- Landscaping and urban design.

**Improving traffic flow**

**Improving safety**

**Benefits**

- Increase safety by improving separation of moving vehicles
- Increasing curves to improve safety
- Improve travel times through additional lanes
- Increase reliability of freight access in and out of the Illawarra.

**Improve travel speeds**

**Improve road alignment**



## Review of environmental factors

The review of environmental factors contains specialist studies and investigations regarding biodiversity, visual impact and both Aboriginal and non-Aboriginal heritage items.

Copies of the review of environmental factors are available to view or download from the project website [rms.nsw.gov.au/projects/illawarra/m1-princes-motorway-picton-rd-bulli-tops](http://rms.nsw.gov.au/projects/illawarra/m1-princes-motorway-picton-rd-bulli-tops). Hard copies are also available at the display locations listed below.

We are seeking community feedback on the preferred option and review of environmental factors. Feedback is invited until Friday 3 February 2017 and will be used to refine the design.

## Drop in sessions

We are holding three information sessions to give the community an opportunity to speak to the project team.

### Wollongong Traders Market

Friday 13 January (9am – 2pm)

### Wollongong Central

Saturday 14 January (1pm – 5pm)

### Wollongong Central

Thursday 19 January (4pm – 8:30pm)

### Unstaffed displays are provided at

Wollongong City Council

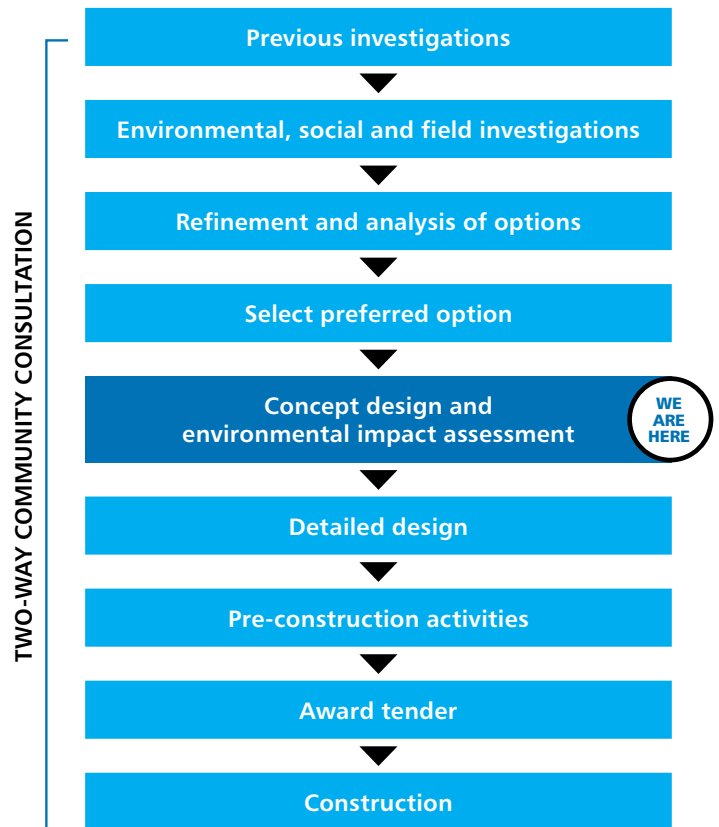
University of Wollongong

## What happens next?

A report summarising the feedback received during consultation and responses to feedback will be available in mid-2017.

The next step for the project will be detailed design.

We will continue to keep the community updated as the project progresses.



## Have your say

To find out more or provide feedback visit [rms.nsw.gov.au/projects/illawarra/m1-princes-motorway-picton-rd-bulli-tops](http://rms.nsw.gov.au/projects/illawarra/m1-princes-motorway-picton-rd-bulli-tops)

**Phone:** 4221 2741 (during business hours)  
4221 2515

**Email:** [Julian.Watson@rms.nsw.gov.au](mailto:Julian.Watson@rms.nsw.gov.au)

**Mail:** Roads and Maritime Services  
PO Box 477, Wollongong NSW 2500



This document contains important information about road projects in your area. If you require the services of an interpreter, please contact the Translating and Interpreting Service on **131 450** and ask them to call the project team on **4221 2741**. The interpreter will then assist you with translation.



December 2016  
RMS 16.600



**Privacy** Roads and Maritime Services ("RMS") is subject to the Privacy and Personal Information Protection Act 1998 ("PIIP Act") which requires that we comply with the Information Privacy Principles set out in the PIIP Act. All information in correspondence is collected for the sole purpose of delivering this project. The information received, including names and addresses of respondents, may be published in subsequent documents unless a clear indication is given in the correspondence that all or part of that information is not to be published. Otherwise RMS will only disclose your personal information, without your consent, if authorised by the law. Your personal information will be held by RMS at Level 1, 29–37 George Street, Woy Woy NSW 2256. You have the right to access and correct the information if you believe that it is incorrect.