

## M12 Motorway - Central

### Night work continuing until Wednesday 21 December 2022



The Australian and NSW governments are building the M12 Motorway to provide direct access to the Western Sydney International Airport at Badgerys Creek and connect to Sydney's motorway network.

#### What are we doing?

Transport for NSW will continue night work for **eight night shifts** between **Monday 5 December** and **Wednesday 21 December 2022**, weather permitting along Elizabeth Drive, Clifton Avenue and Salisbury Avenue in Kemps Creek and Cecil Park. During this work we will:

- carry out utility investigations
- install new gas, communications, power and water mains
- add temporary road pavement
- install temporary speed limit signs.

These works need to be carried out at night for the safety of our workers and road users and to minimise traffic disruption.

#### Speed reduction on Elizabeth Drive

From **Monday 5 December** the speed limit along Elizabeth Drive will be reduced to 60 kilometres per hour from 500 metres east of Mamre Road, Kemps Creek to Duff Road, Cecil Park. We are also extending the 70 kilometres per hour speed limit from Cecil Road to Duff Road. These speed limit changes will be in place until the new motorway is built, for the safety of residents and workers.

#### Work hours

Our night work hours are between **6pm** and **5am**. We will not work more than two nights in a row and three nights in the same week in the same location.

Day work will continue between **7am** and **6pm** from **Monday** to **Friday** and between **8am** and **6pm** on **Saturdays**. There will be no work on Sundays or public holidays.

#### What equipment will be used?

We will use plant equipment such as excavators, trucks, bobcats, rollers, dozers, lighting towers, hand tools, vacuum trucks and sweepers.

# M12 Motorway Central - night work and speed limit changes

## How will the work affect you?

During our works you may see increased activities in the area.

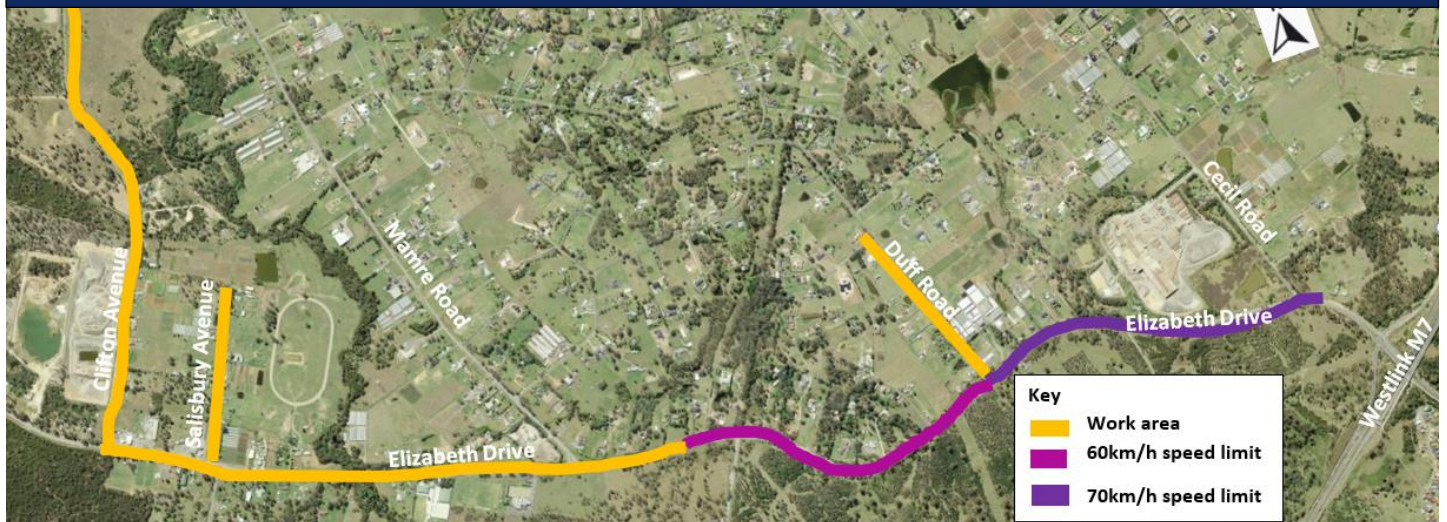
The work may be noisy at times, but we will do everything we can to minimise its impact, including completing noisier activities earlier in the night by **midnight**, where possible, and turning off equipment and machinery when not in use.

## Traffic changes

There will be temporary traffic changes along the work zone during our work hours to ensure the work zone is safe.

Please keep to speed limits and follow the direction of traffic controllers and signs. For the latest traffic updates, you can call **132 701**, visit **livetraffic.com** or download the Live Traffic NSW App.

## Night work and speed limit change locations



## Contact us

If you have any questions, a complaint or would like more on the M12 Motorway project, please contact our project team:



1800 517 155



[M12central@seymourwhyte.com.au](mailto:M12central@seymourwhyte.com.au)



[nswroads.work/m12](https://nswroads.work/m12)



Transport for NSW, PO Box 973 Parramatta NSW 2124



If you need help understanding this information, please contact the Translating and Interpreting Service on **131 450** and ask them to call us on **1800 517 155**