

# M12 Motorway – Central

## Out of hours work continuing until Tuesday 28 February 2023



The Australian and NSW governments are building the M12 Motorway to provide direct access to the Western Sydney International Airport at Badgerys Creek and connect to Sydney’s motorway network.

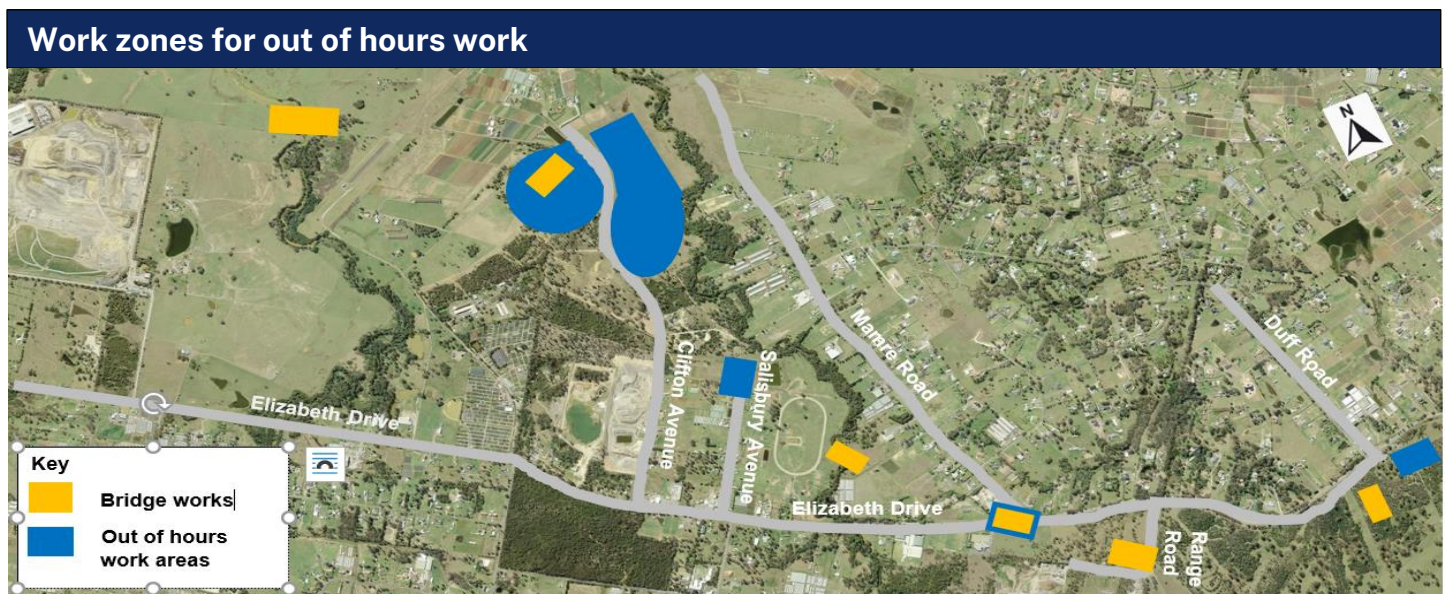
### What are we doing?

Transport for NSW will continue working out of hours for **25 night shifts** between **Monday 9 January** and **Tuesday 28 February 2023** along Elizabeth Drive, Clifton Avenue, Salisbury Avenue, Mamre Road, Range Road and Duff Road in Kemps Creek and Cecil Park. The below map shows the location of our work. During this work we will:

- install new gas, communications, power and water mains
- repair, maintain and install road pavement as required
- deliver fill material to construction site via Elizabeth Drive and Clifton Avenue
- deliver, use and remove oversized equipment when needed.

These works need to be carried out at night for the safety of our workers and road users and to minimise traffic disruption.

We may also need to start work early at **6am** or finish after **6pm** during weekdays for concrete pours to establish bridge foundations as the quality of concrete can be impacted if activities are not continuous, or they occur during hot, cold or high wind conditions.



# M12 Motorway Central - night work and speed limit changes

## Work hours

Our night work hours are between **6pm** and **7am**, from **Monday** to **Friday**. We will not work more than two nights in a row and three nights in the same week in the same location.

Our day work will continue between **7am** and **6pm**, from **Monday** to **Friday** and between **8am** and **6pm** on **Saturdays**. There will be no work on Sundays or public holidays.

## What equipment will be used?

We will use plant equipment such as excavators, compactors, light and heavy vehicles, hand power tools, cranes, vacuum trucks, a water cart, sweepers, milling machines and asphalt pavers, bobcats and lighting towers.

## How will the work affect you?

During our work, you may see increased activities in the area.

The work may be noisy at times, but we will do everything we can to minimise its impact, including completing noisier activities earlier in the night by **midnight**, where possible, and turning off equipment and machinery when not in use.

## Traffic changes

There will be temporary traffic changes along the work zone during our work hours to ensure the work zone is safe while the equipment is used, delivered and removed.

Please keep to speed limits and follow the direction of traffic controllers and signs. For the latest traffic updates, you can call **132 701**, visit **livetraffic.com** or download the Live Traffic NSW App.

## Contact us

If you have any questions, a complaint or would like more on the M12 Motorway project, please contact our project team:



1800 517 155



M12central@seymourwhyte.com.au



nswroads.work/m12



Transport for NSW, PO Box 973 Parramatta NSW 2124



If you need help understanding this information, please contact the Translating and Interpreting Service on **131 450** and ask them to call us on **1800 517 155**