

M12 Motorway - Central

Night work from Sunday 28 August



The Australian and NSW governments are building the M12 Motorway to provide direct access to the Western Sydney International Airport at Badgerys Creek and connect to Sydney’s motorway network.

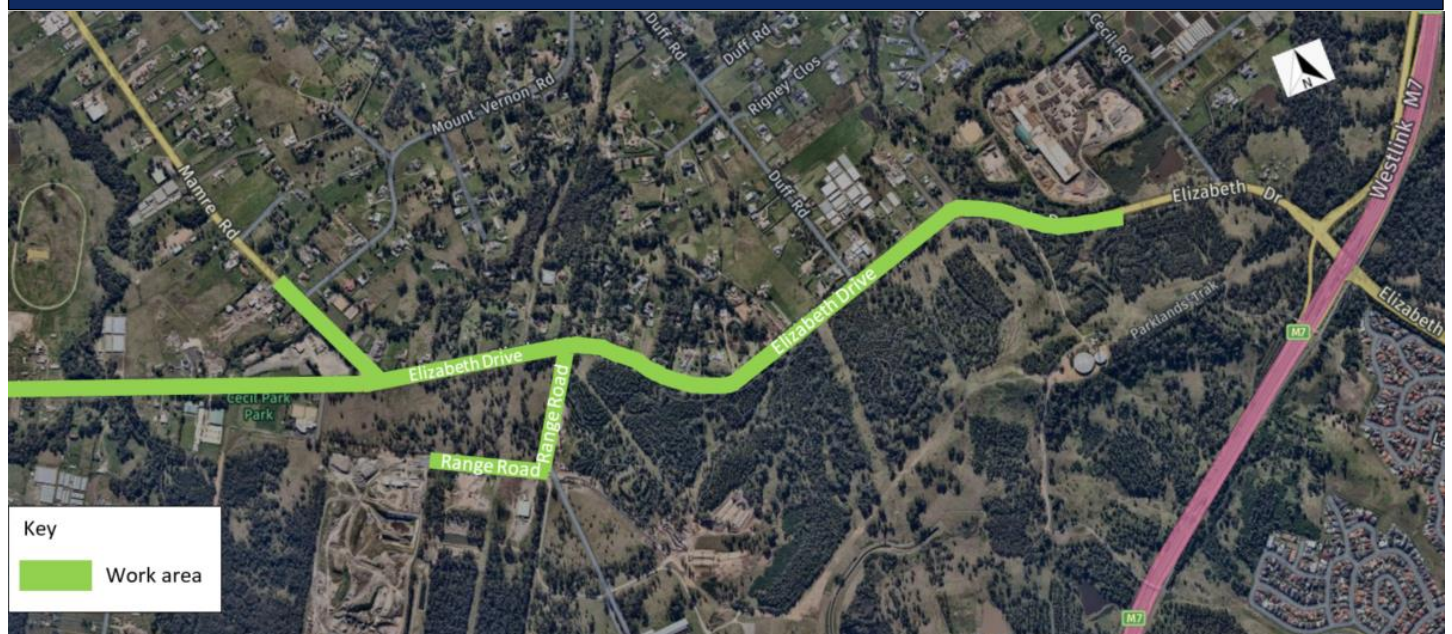
Transport for NSW continues to prepare for major construction of the M12 Motorway central section.

Between **Sunday 28 August** and **Friday 30 September**, night work will take place along Mamre Road, Range Road and Elizabeth Drive in Kemps Creek and Cecil Hills. During this work we will:

- carry out utility investigation and line markings
- install temporary roadwork signage, safety road barriers and construction gates.

These work activities need to be carried out at night to minimise traffic disruptions and reduce safety risks to our workers and motorists.

M12 Central night work locations



M12 Motorway Central - night work

Work hours

This work will take **20 night shifts** to complete between **Sunday 28 August** and **Friday 30 September**, weather permitting. Our night work hours are between **6pm** and **5am**. We will not work more than two nights in a row and three nights in the same week in the same location.

We will also continue our day preparation work. Our standard day work hours are between **7am** and **6pm** from **Monday to Friday** and between **8am** and **6pm** on **Saturdays**, excluding public holidays.

What equipment will be used?

We will use plant equipment such as excavators, trucks, bobcats, rollers, dozers, lighting towers, hand tools, vacuum trucks and sweepers.

How will the work affect you?

During our works you may see increased activities in the area. However, we do not expect there to be any impact on nearby residents.

The work may be noisy at times, but we will do everything we can to minimise its impact, including completing noisier activities earlier in the night before **11pm**, where possible, and turning off equipment and machinery when not in use.

Traffic changes

There will be temporary traffic changes along the work zone during our work hours to ensure the work zone is safe.

Please keep to speed limits and follow the direction of traffic controllers and signs. For the latest traffic updates, you can call **132 701**, visit **livetraffic.com** or download the Live Traffic NSW App.

Contact us

If you have any questions or would like more on the M12 Motorway project, please contact our project team:



1800 517 155



m12motorway@transport.nsw.gov.au



nswroads.work/m12



If you need help understanding this information, please contact the Translating and Interpreting Service on **131 450** and ask them to call us on **1800 517 155**