

M12 Motorway - Central

Night work from Sunday 18 September



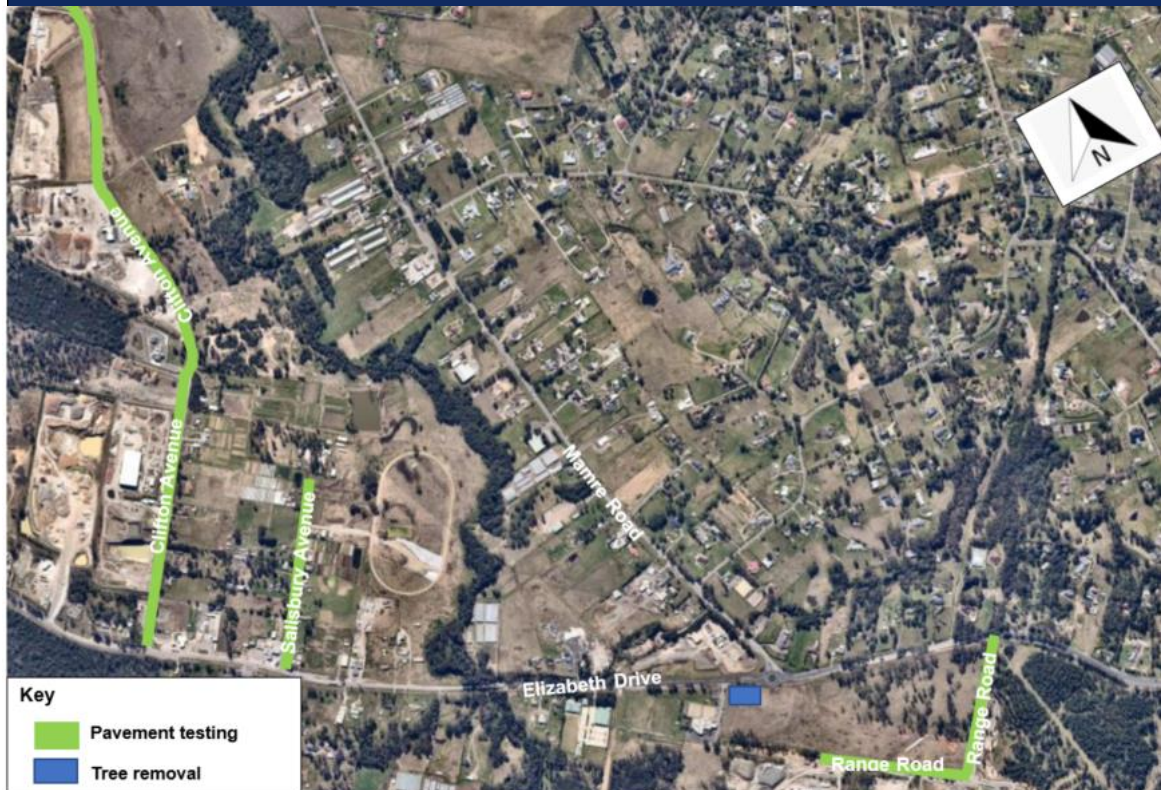
The Australian and NSW governments are building the M12 Motorway to provide direct access to the Western Sydney International Airport at Badgerys Creek and connect to Sydney's motorway network.

Transport for NSW has started major construction on the Central section of the M12 Motorway from early August 2022.

Between **Sunday 18 September** and **Friday 30 September**, night work will take place along Elizabeth Drive, Clifton Avenue, Salisbury Avenue and Range Road at Kemps Creek.

During this work, we will carry out road surface testing and tree removal adjacent to Elizabeth Drive. This work needs to be carried out at night to minimise traffic disruptions and reduce safety risks to our workers and motorists.

M12 Central night work locations



M12 Motorway Central - night work

Work hours

This work will take place over **seven night shifts** from **Sunday 18 September** until **Friday 30 September**, weather permitting. Our night work hours are between **6pm** and **5am**. We will complete noisier tasks by **midnight** and will not work more than two nights in a row in the same location.

Our standard day work hours are between **7am** and **6pm** from **Monday** to **Friday** and between **8am** and **6pm** on **Saturdays**, excluding public holidays.

What equipment will be used?

We will use plants and equipment such as excavators, chainsaws and cherry pickers for tree removal work, and utility vehicles and trailers for road surface testing work.

How will the work affect you?

The road surface testing will involve two utility vehicles constantly stopping every 20 metres to assess the road condition. The trailers are attached at the back of these vehicles with a plate under the trailer that lowers down and produces a slight sound wave that tests the thickness of the road pavement.

Work vehicles will be using flashing lights as a safety requirement. However, noise levels during these works are expected to be low.

Traffic changes

There will be temporary traffic changes along the work zone during our work hours to ensure the work zone is safe.

Lane closures will be in place and may affect travel times. Please keep to speed limits and follow the direction of traffic controllers and signs.

For the latest traffic updates, you can call **132 701**, visit **livetraffic.com** or download the Live Traffic NSW App.

Contact us

If you have any questions or would like more on the M12 Motorway project, please contact our project team:



1800 517 155



m12central@seymourwhyte.com.au



nswroads.work/m12



If you need help understanding this information, please contact the Translating and Interpreting Service on **131 450** and ask them to call us on **1800 517 155**