

M12 Motorway - Central

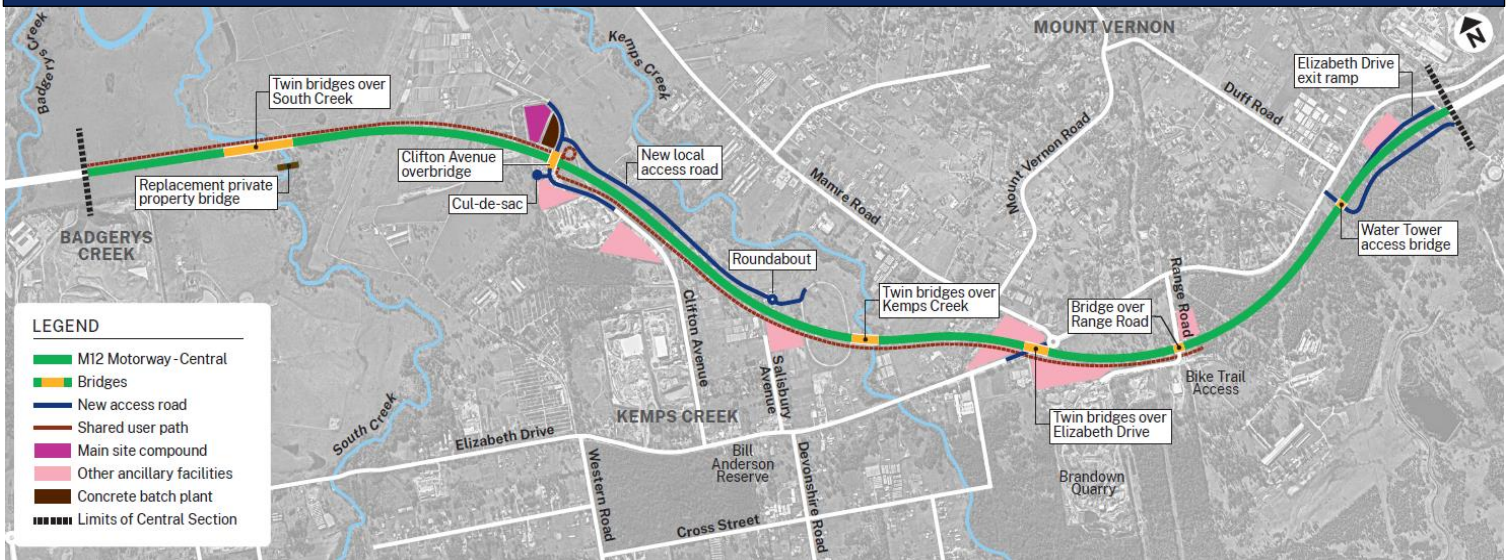
Preparation work



The Australian and NSW governments are building the M12 Motorway to provide direct access to the Western Sydney International Airport at Badgerys Creek and connect to Sydney’s motorway network.

From **Friday 5 August 2022** we will start work to prepare for major construction on the central section of the M12 Motorway, between east of Badgerys Creek and Duff Road, Cecil Park.

M12 Motorway - Central between east of Badgerys Creek and Cecil Park



During preparation work, we will:

- dig small holes to investigate the existing ground conditions and identify the underground utilities
- install temporary traffic signs and safety barriers on Elizabeth Drive, Mamre Road, Clifton Avenue and Salisbury Avenue
- install temporary and permanent fencing as part of property adjustments
- install erosion sediment controls
- level the work zone, including the removal of trees, vegetation and topsoil
- establish haulage roads to access work locations along the project
- start bridge foundation (piling) work from Elizabeth Drive.

M12 Motorway Central - preparation work

We will also set up the main site office and work site compounds across the project to support construction work. They will be used until the project is completed.

How will the work affect you?

There will be additional noise in the area as we use excavators, trucks, roller compactors, trench compactors, lifter borers, elevated work platforms, cranes, vacuum trucks (also known as a sucker trucks) and tree clearing equipment during our work.

Working hours

We will work up to six days a week. Our work hours are between **7am** and **6pm** from **Monday** to **Friday** and **8am** and **6pm** on **Saturdays**. There will be no work on public holidays.

We will continue to keep the community informed of work needed to be completed outside of these hours.

Traffic changes

There will be temporary traffic changes along the work zone during our work hours to ensure the work zone is safe.

Please keep to speed limits and follow the direction of traffic controllers and signs. For the latest traffic updates, you can call **132 701**, visit **livetraffic.com** or download the Live Traffic NSW App.

Contact us

If you have any questions or would like more on the M12 Motorway project please contact our project team:



1800 517 155



m12motorway@transport.nsw.gov.au



nswroads.work/m12



If you need help understanding this information, please contact the Translating and Interpreting Service on **131 450** and ask them to call us on **1800 517 155**