

Continuing M12 Motorway early works



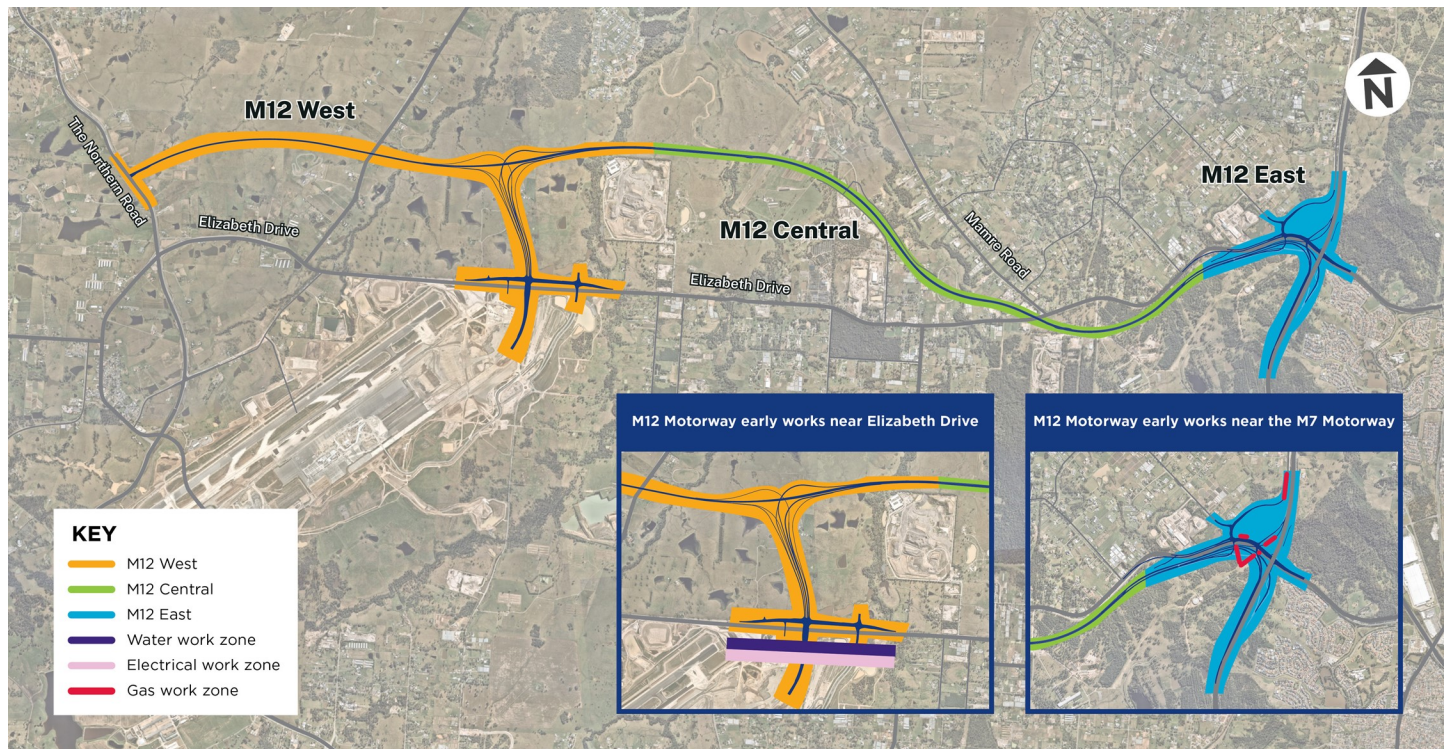
The Australian and NSW governments are building the M12 Motorway to provide direct access to the Western Sydney International Airport at Badgerys Creek and connect to Sydney's motorway network.

Project update

Transport for NSW will continue early works in preparation for major construction of the M12 Motorway which will begin in the coming months.

The M12 West section between The Northern Road and Badgerys Creek including the airport interchange and Elizabeth Drive flyover will be delivered by CPB Georgiou Group Joint Venture.

The M12 Central section between Badgerys Creek and Cecil Park will be built by Seymour Whyte.



Continuing M12 Motorway early works

Early work

During our early work, we will:

- pothole to find underground services, survey and investigate ground conditions
- remove trees and vegetation
- install, repair or relocate electrical lines, watermains and gas pipes
- set up the site compound on Wallgrove Road, Cecil Park. We will clear the space to set up a hard surface to store temporary offices, amenities, materials and equipment. This site will be used until early 2023.

Our work schedule

Our work will take place until December 2022 **Monday to Friday** from **7am to 6pm** and may take place on Saturdays from **8am to 6pm**. There will be no work on public holidays. We will keep the community informed of work needed to complete outside of these hours.

How will the work affect you?

There will be additional noise in the area as we use excavators, trucks, micro-tunnelling equipment, roller compactors, trench compactors, lifter borers, elevated work platforms, cranes, cable winches and drum trailers, vacuum trucks (also known as a sucker truck) and tree clearing equipment during our work.

Traffic changes

There will be temporary traffic changes along the work zone during our work hours to ensure the work zone is safe.

Please keep to speed limits and follow the direction of traffic controllers and signs. For the latest traffic updates, you can call **132 701**, visit **livetraffic.com** or download the Live Traffic NSW App.

Contact us

If you have any questions or would like more on the M12 Motorway project please contact our project team:



1800 517 155



m12motorway@transport.nsw.gov.com



nswroads.work/m12



If you need help understanding this information, please contact the Translating and Interpreting Service on **131 450** and ask them to call us on **1800 517 155**