

M12 Motorway – Night works on Elizabeth Drive, Cecil Park



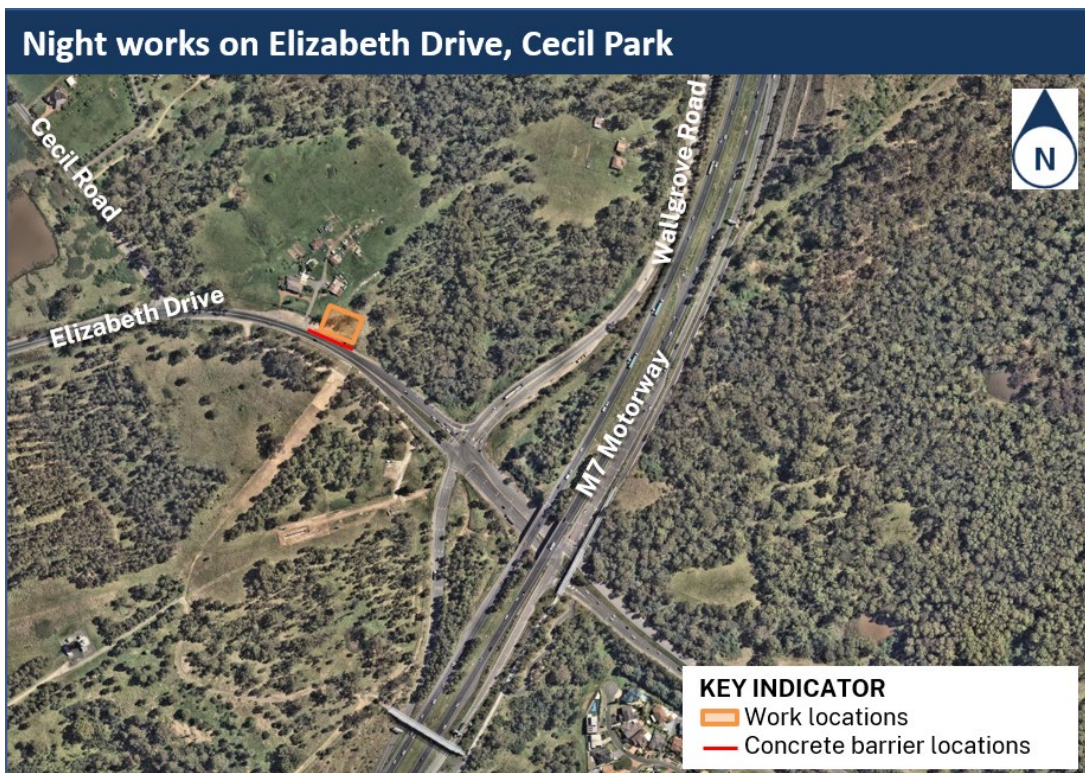
The Australian and NSW governments are building the M12 Motorway to provide direct access to the Western Sydney International Airport at Badgerys Creek and connect to Sydney’s motorway network.

What we are doing?

Transport for NSW will continue work to investigate a gas main located next to Elizabeth Drive in Cecil Park on **Monday 23 January** and **Tuesday 24 January 2023**. During this work, we will:

- set up traffic control including speed reduction, lane closures and/or stop-go arrangements
- remove concrete barriers.

These work activities need to be carried out at night to minimise traffic disruptions and reduce safety risks to our workers and road users.



M12 Motorway – Night works on Elizabeth Drive, Cecil Park

Our work schedule

We will work on **Monday 23 January** and **Tuesday 24 January 2023**, weather permitting. Our night work hours are between **9pm** and **5am**.

What equipment will be used?

During this work we will use a truck, light and heavy vehicles, crane, lighting towers and hand tools.

How will this work affect you?

During our work, you may see increased activities in the area.

Our work may be noisy at times, but we will do everything we can to minimise its impact, including completing noisier activities earlier in the night before 11pm, where possible, and turning off equipment and machinery when not in use.

Please contact us if you have any concerns or questions about this work.

Traffic Changes

There will be temporary traffic changes in place along Elizabeth Drive for the safety of motorists and our workers. This could include speed reduction, lane closures and/or stop-go arrangements.

Please keep to speed limits and follow the direction of traffic controllers and signs. For the latest traffic updates, you can call **132 701**, visit **livetraffic.com** or download the Live Traffic NSW App.

Contact us

If you have any questions, complaints or would like more information on the M12 Motorway project, please contact our project team:



1800 517 155



m12motorway@transport.nsw.gov.au



nswroads.work/m12



Transport for NSW, PO Box 973 Parramatta NSW 2124



If you need help understanding this information, please contact the Translating and Interpreting Service on **131 450** and ask them to call us on **1800 517 155**