

M12 Motorway– Gas main works continuing



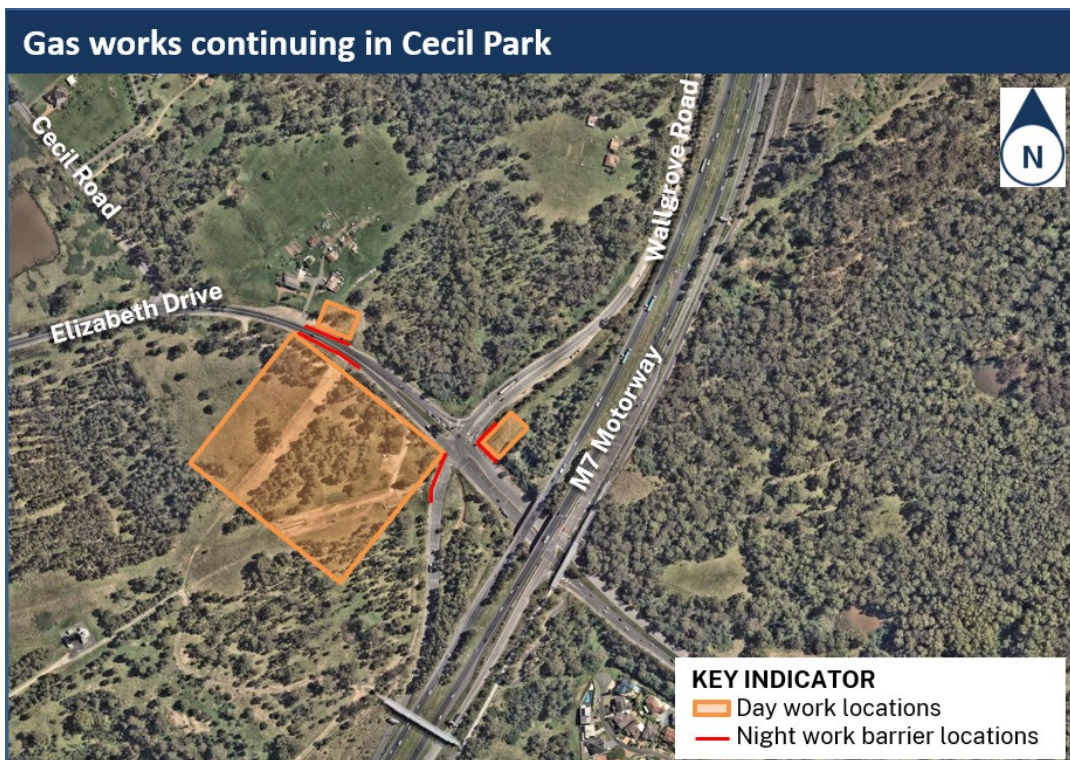
The Australian and NSW governments are building the M12 Motorway to provide direct access to the Western Sydney International Airport at Badgerys Creek and connect to Sydney’s motorway network.

What we are doing?

Transport for NSW will continue work to investigate and protect gas mains located near Elizabeth Drive and Wallgrove Road in Cecil Park between **9 January 2023** and **31 March 2023**. During this work, we will:

- expose and visually inspect gas main infrastructure
- carry out any repairs and coat or wrap pipes to prevent corrosion
- install concrete slabs for protection.

In addition, we will work at night on **Monday 9 January, Tuesday 10 January** or **Wednesday 11 January 2023** to relocate concrete barriers on Elizabeth Drive and install concrete barriers along the M7 off ramp. These work activities need to be carried out at night to minimise traffic disruption and reduce safety risks to our workers and motorists.



M12 Motorway – Gas main works continuing

Our work schedule

Our day work will take place until **31 March 2023**, on **Monday to Friday** from **7am to 6pm**, and on **Saturdays** from **8am to 6pm**. We will not work on Sunday or public holidays.

We will work on **Monday 9 January, Tuesday 10 January** or **Wednesday 11 January 2023**, weather permitting. Our night work hours are from **9pm to 5am**.

What equipment will be used?

During day work we will use excavators, dump and tipper trucks, light and heavy vehicles, jack hammers, water pumps, compressors and hand tools.

During night work we will use a trucks, light and heavy vehicles, water pumps, cranes, lighting towers and hand tools.

How will this work affect you?

During our works you may see increased activities in the area.

Our work may be noisy at times, but we will do everything we can to minimise impacts, including completing noisier activities during the day or earlier in the night before 11pm, where possible, and turning off equipment and machinery when not in use.

Please contact us if you have any concerns or questions about this work.

Traffic changes

During works there may be temporary traffic changes in place along Elizabeth Drive for the safety of road users and our workers. This could include speed reduction, lane closures and/or stop-go arrangements.

Please keep to speed limits and follow the direction of traffic controllers and signs. For the latest traffic updates, you can call **132 701**, visit **livetraffic.com** or download the Live Traffic NSW App.

Contact us

If you have any questions, complaints or would like more information on the M12 Motorway project, please contact our project team:



1800 517 155



m12motorway@transport.nsw.gov.au



nswroads.work/m12



Transport for NSW, PO Box 973 Parramatta NSW 2124



If you need help understanding this information, please contact the Translating and Interpreting Service on **131 450** and ask them to call us on **1800 517 155**