

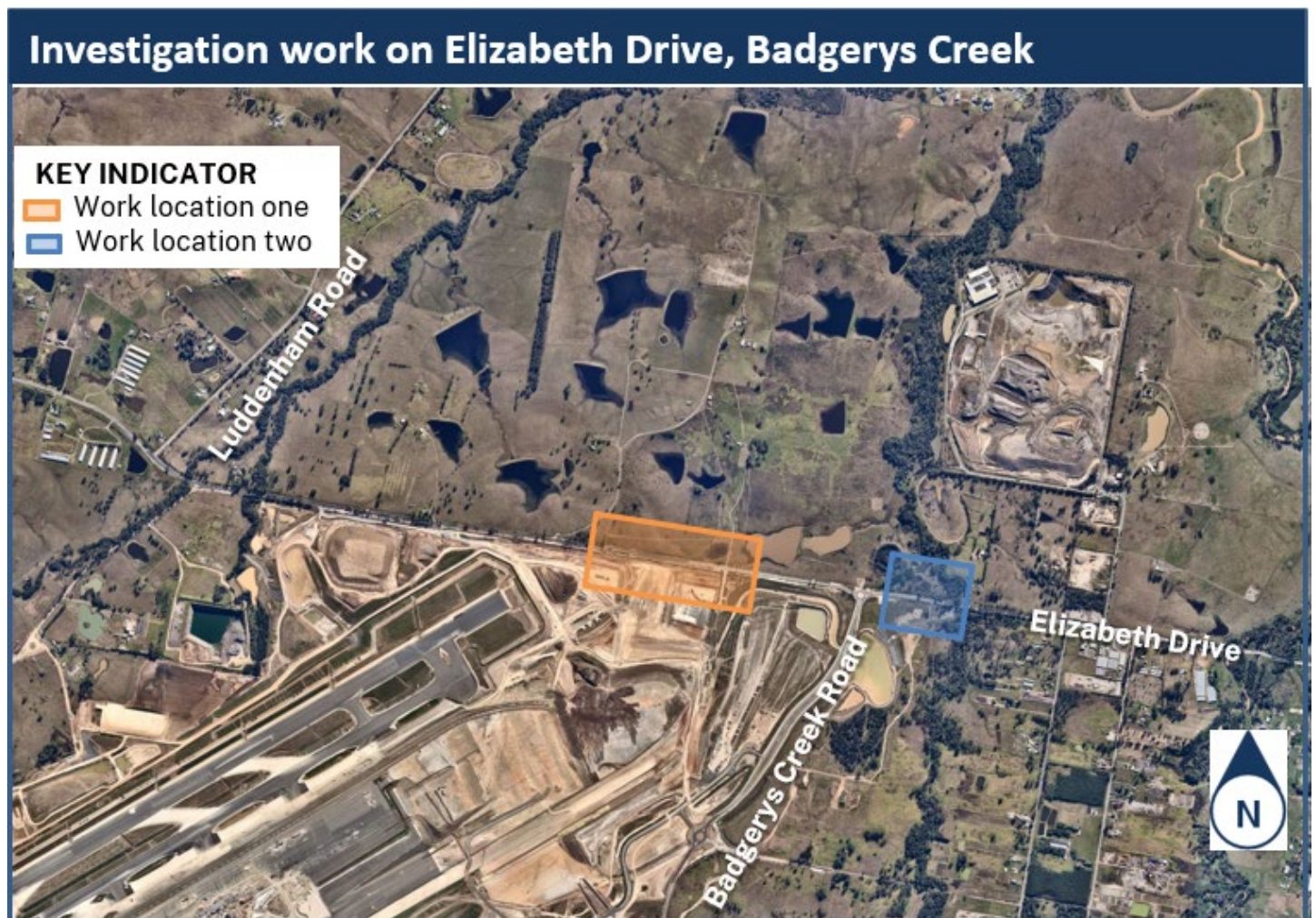
M12 Motorway – night works on Elizabeth Drive



The Australian and NSW governments are building the M12 Motorway to provide direct access to the Western Sydney International Airport at Badgerys Creek and connect to Sydney’s motorway network.

What are we doing?

From **Tuesday 16 August 2022** we will be investigating the existing ground conditions and identifying underground utilities. This work will prepare for the underground water main works proposed to take place in the coming months.



M12 Motorway – night works on Elizabeth Drive

This work will include:

- traffic control set up including speed reduction, lane closures and/or stop-go arrangements
- survey and service locating work
- excavation of the road surface to expose existing services
- backfill and reinstatement of the road.

Our work schedule

The work will take **three shifts** to complete at each location and will take place from **Tuesday 16 August 2022** to **Friday 26 August 2022**. Our work hours are between **9pm** and **5am**.

We will not work more than two nights in a row and three nights in the same week at each location.

What equipment will be used?

During this work we will use plant and equipment such as road saws, excavators, vacuum trucks, compactors, light and heavy vehicles, and light towers.

How will this work affect you?

There will be temporary traffic changes in place along Elizabeth Drive for the safety of motorists and our workers. Please keep to speed limits and follow the direction of traffic controllers and signs.

For the latest traffic updates, you can call **132 701**, visit **livetraffic.com** or download the Live Traffic NSW App.

We do not expect these works to cause significant impacts on our neighbours.

Please contact us if you have any concerns or questions about this work.

Contact us

If you have any questions or would like more on the M12 Motorway project please contact our project team:



1800 517 155



m12motorway@transport.nsw.gov.au



nswroads.work/m12



If you need help understanding this information, please contact the Translating and Interpreting Service on **131 450** and ask them to call us on **1800 517 155**