



M12 Motorway geotechnical investigation work from Monday 28 February 2022

February 2022

The Australian and NSW governments are building the M12 Motorway to provide direct access to the Western Sydney International Airport at Badgerys Creek and connection to Sydney's motorway network.

What are we doing?

Transport for NSW is continuing work to deliver the new M12 Motorway. As part of this work, we are undertaking further geotechnical investigations along parts of Elizabeth Drive, the M7 Motorway, and Wallgrove Road, Cecil Hills from Monday 28 February 2022.

The investigation work will involve coring, drilling holes, and small excavations in and around the road surface to test soil in the area.

Date and time of work

Work will take place from Monday 28 February 2022 to Tuesday 12 April 2022 up to five days per week, weather permitting.

Some night work along Elizabeth Drive is planned to take place between 20 March and 12 April 2022.

Our standard day time working hours are 7am to 6pm, Monday to Friday. Our night-time working hours will be between 9pm and 5am, Sunday to Thursday.

Traffic changes

For the safety of motorists and workers there will be some temporary traffic changes and lane closures during day and night-time work on Elizabeth Drive and Wallgrove Road.

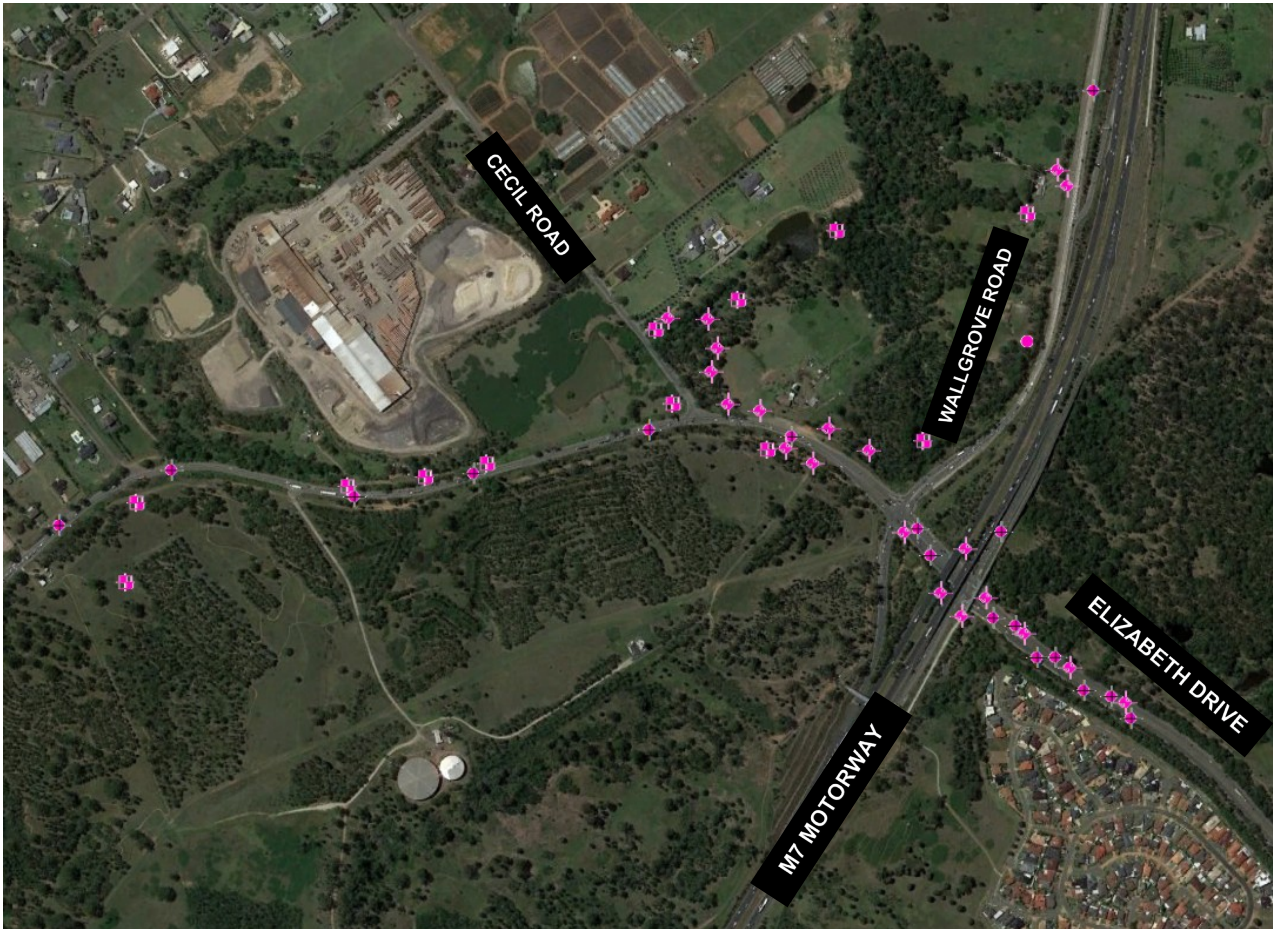
Minor works will also take place on the Westlink-M7 pedestrian and cycle path for one day in mid to late March. Traffic management will be in place to help direct pedestrians and cyclists.

How will the work affect you

Our work may be noisy at times but we will do everything we can to minimise its impact, including completing noisier tasks by 11pm, where possible, and turning off machinery when not in use.

We will not work in the nearby area for more than two consecutive nights with a maximum of six nights per month.

Work locations



What equipment will be used?

Equipment used during this work may include lighting towers, track mounted drilling rigs, excavators, generators, vacuum trucks and hand tools.

Contact us

If you have any questions or would like more on the M12 Motorway project please contact our project team:



1800 517 155



m12motorway@transport.nsw.gov.com



nswroads.work/m12



If you need help understanding this information, please contact the Translating and Interpreting Service on **131 450** and ask them to call us on **1800 870 665**