

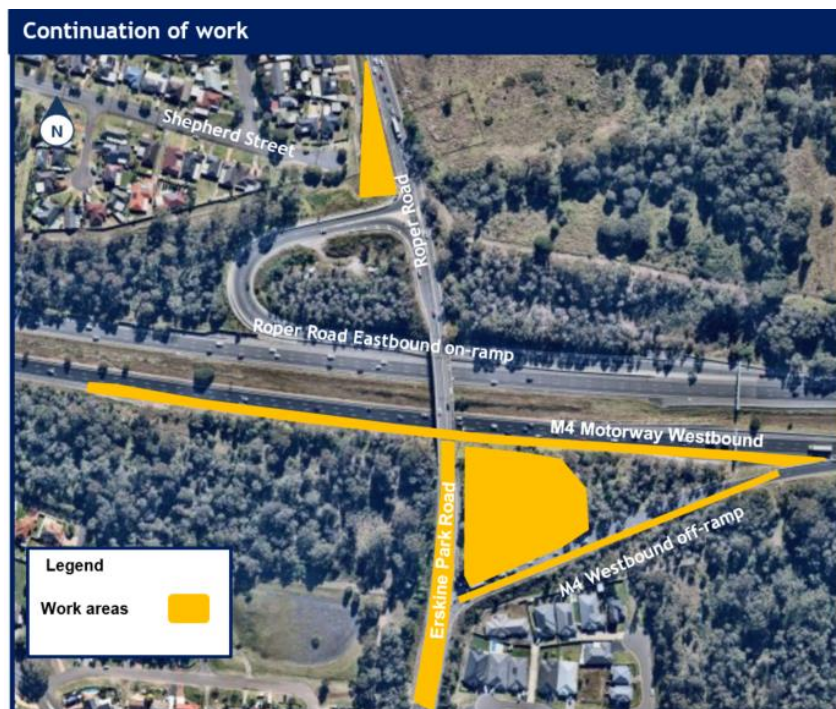
Continuation of work on M4 Roper Road westbound on-ramp

Transport for NSW/ October 2022

The NSW Government is funding this project to ease congestion on the M4 Motorway on-ramps and local roads within Erskine Park and St Clair

Work is continuing on the M4 Roper Road westbound on-ramp and over the following eight weeks work will include:

- construction of retaining wall and pier protection under the existing Roper Road bridge
- construction of pavement and asphalt placement on the M4 westbound shoulder and new westbound on-ramp (out of hours work)
- installation of guardrails, kerb, safety barriers and landscaping work along new westbound on-ramp and Erskine Park Road (out of hours)
- installation of smart motorway infrastructure along new westbound on-ramp
- upgrading traffic signals on Erskine Park Road
- reconstruction of pavement and asphalt placement on Erskine Park Road
- widening Erskine Park Road, construction of median island and pavement (out of hours work)
- installation of electrical services and adjustments at the intersection of Erskine Park Road, Roper Road eastbound on-ramp, Shepherd Street and M4 westbound off-ramp (out of hours)
- signage installation along Erskine Park Road northbound, Shepherd Street and the M4 westbound shoulder.



Our work schedule

Our standard work hours are **Monday to Friday** from **7am to 6pm** and **Saturday** from **7am to 4pm**. No work will take place during the day on public holidays.

Out of hours work

As part of the M4 Roper Road westbound on-ramp project, out of hours work is required between **8pm Sunday 23 October** and **5am Friday 23 December 2022**. We will work up to five nights per week, weather permitting. Sunday day works may be required to account for potential weather related delays.

How this work will affect you

Work will be carried out at night to minimise traffic disruption and reduce safety risks to the workers and road users.

The **out of hours work** will be noisy, however we will make every effort to minimise the impact by carrying out noisier work before midnight, turning off machinery and vehicles when not in use and directing lights and noisy equipment away from properties where possible. **Equipment used** may include road saw, vac truck, excavator, pilling rig, roller, trucks, profiler, asphalt machine, light vehicles and lighting towers.

Are you studying for your HSC?

We understand the HSC is an important milestone for student members within our community. Should a member of your household be studying for the HSC, please contact us as soon as possible. We will make every effort to minimise disruption during the exam period.

Traffic Changes

During November we plan to have a full closure on the M4 Roper Road westbound off-ramp. To minimise traffic disruption, road users will be redirected to the M4 Mamre Road westbound off-ramp. There will be additional lane closures on Erskine Park Road northbound and southbound. Road users are encouraged to plan ahead for the detour that will be in place.

We will notify the community with a separate notification closer to the closure date.

Please keep to speed limits and follow the direction of traffic controllers and signs. For the latest traffic updates, contact 132 701, visit [livetraffic.com](https://www.livetraffic.com) or download the Live Traffic NSW App.

Thank you for your patience during this important work.

Contact us

If you have any questions or would like more information on the project please contact our team on 1800 842 103 or email M4roperroad.community@georgiou.com.au. More information about the project can be found on the project website nswroads.work/m4roperwramp.



If you need help understanding this information, please contact the Translating and Interpreting Service on **131 450** and ask them to call us on **1800 842 103**