

## M4 Motorway - Roper Road westbound on ramp

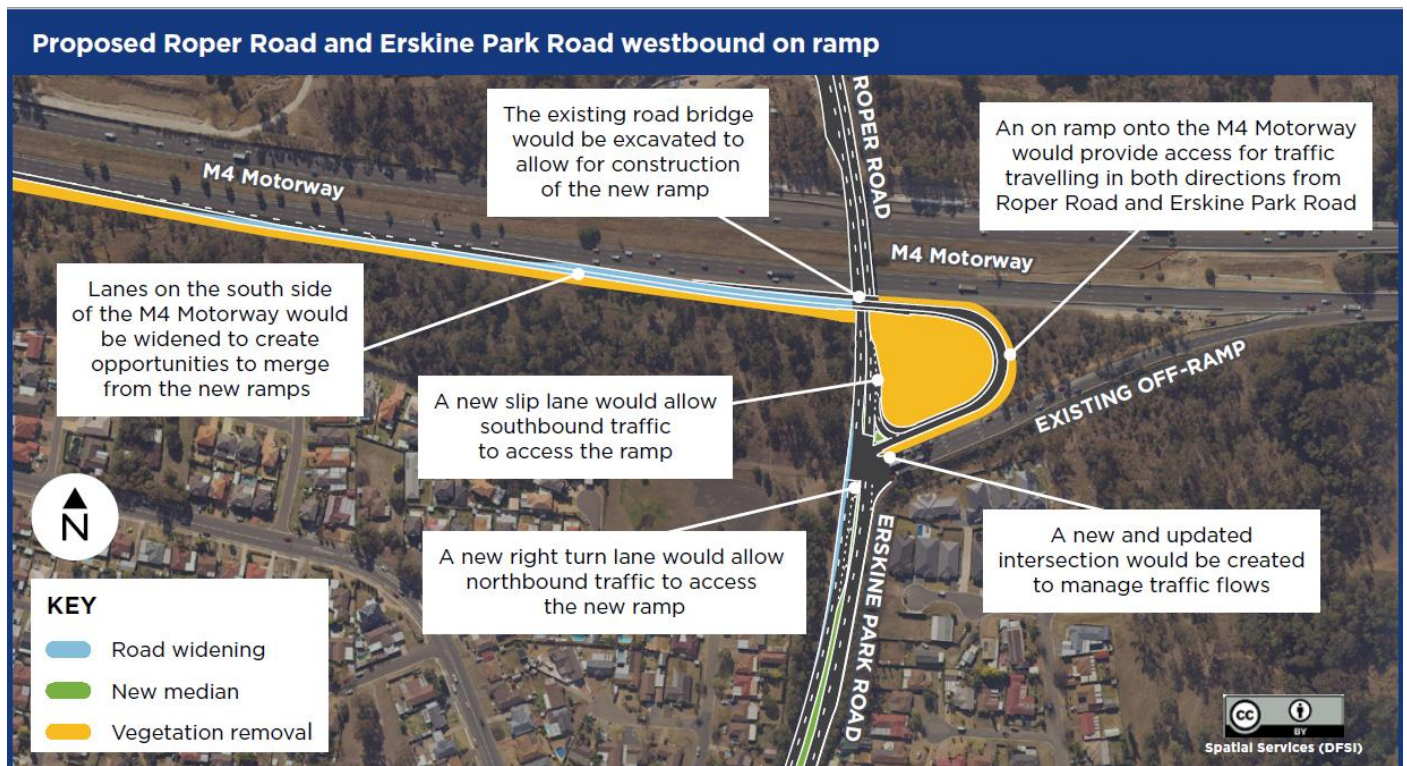
### Project update and consultation outcome

The NSW Government is funding this project to ease congestion on the M4 Motorway on ramps and local roads within Erskine Park and St Clair.

Last year, Transport for NSW invited feedback from the community on the design for a new westbound on ramp to the M4 Motorway. The project will deliver a new west facing ramp accessible to northbound and southbound traffic along Roper Road/Erskine Park Road.

Transport identified a design that addresses the project objectives and best accommodates the design requirements of the area. The proposed design was presented for feedback during a community consultation period from 23 November to 16 December 2020.

See below for a map of the proposed on ramp at Erskine Park.



Transport received 93 submissions in response during the consultation period. The key categories raised in the feedback included:

- support for the project
- overall project justification
- environmental impacts such as noise and tree impacts
- location and design of the on ramp
- potential congestion on the road network as a result of the project.

We have now produced a community consultation report, which summarises the feedback received and Transport's response. The community consultation report is now available at the project website: [nswroads.work/m4roperwramp](https://nswroads.work/m4roperwramp).

After considering all of the valuable feedback received during the consultation period, Transport has decided to proceed with the proposed design in the original proposal. Further work on the project design will include additional noise assessments within the current project area to help identify any further noise mitigations required for the project

We would like to thank everyone who made a submission. Transport for NSW will now finalise the detailed design and environmental assessment for the project.

We will continue to keep the community and stakeholders updated as the project progresses.

## Contact

If you have any questions, please contact the project team on 1800 974 989 during business hours, or email [m4roperwramp@transport.nsw.gov.au](mailto:m4roperwramp@transport.nsw.gov.au).



If you need help understanding this information, please contact the Translating and Interpreting Service on 131 450 and ask them to call us on 1800 703 457.