

M5 Motorway upgrade Westbound from Moorebank Avenue to Hume Highway

Have your say – recommended design

December 2019

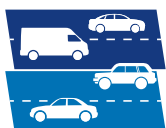


Traffic entering the M5 Motorway at Moorebank Avenue has to merge with traffic exiting at Hume Highway

The NSW Government is planning to ease congestion and improve safety on the M5 Motorway for motorists travelling westbound between Moorebank Avenue and Hume Highway.

Background

Motorists travelling westbound on the M5 Motorway through Moorebank currently experience traffic congestion in the afternoon peak. This is caused by traffic entering the motorway westbound at Moorebank Avenue, and merging with traffic already on the motorway that is looking to exit at Hume Highway. Increasing heavy vehicles travelling from the Moorebank Logistics Park will also add to the congestion.



**Easing
congestion**

Recommended design

Transport for NSW has identified a design to upgrade the M5 Motorway westbound in this area to reduce congestion and improve the surrounding road network efficiency. The recommended design would include the following:

- A new two lane bridge over Georges River and the T2, T3 and T5 railway lines, connecting the M5 Motorway and Moorebank Avenue to the Hume Highway
- A new underpass at Moorebank Avenue for traffic exiting the M5 Motorway at Hume Highway
- A new shared exit with Moorebank Avenue for traffic wishing to exit the M5 Motorway at Hume Highway
- Closing the existing exit from the M5 Motorway to Hume Highway between Moorebank Avenue and Hume Highway.

Benefits of the upgrade

The recommended design would:

- Provide a reliable road network to support economic and residential growth in western Sydney
- Reduce congestion by removing the traffic weave
- Improve safety and access to the Liverpool CBD
- Provide pedestrian and cyclist connection across the Georges River
- Provide efficient, reliable travel between the Moorebank Logistics Park and the state road network
- Support the M5 Motorway as the key gateway to south-west Sydney
- Improve traffic flow across Georges River.

Selecting the recommended design

The development process to identify a recommended design included consultation with key stakeholders at a range of workshops and meetings. Key stakeholders have been involved in evaluating several design options to identify the recommended design.

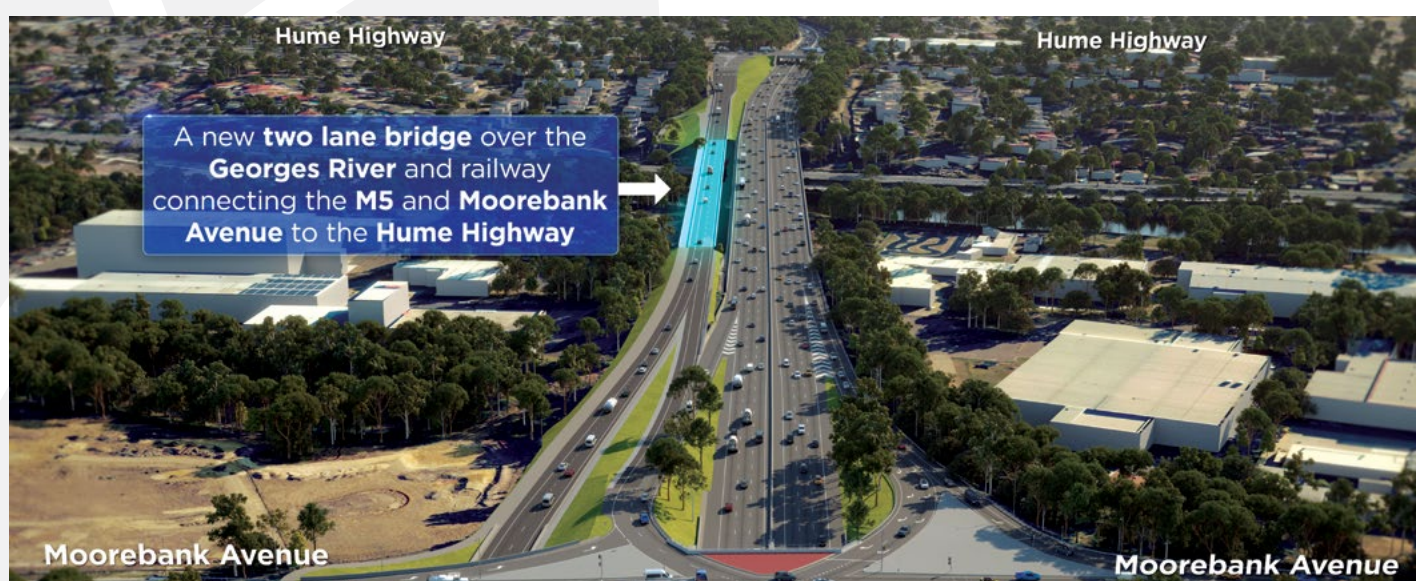
Further information on the recommended design and how we developed and selected it can be found in the Options Report, which is now available for community feedback.

Have
your
say

See the back of this community update for details on how you can give us your feedback.

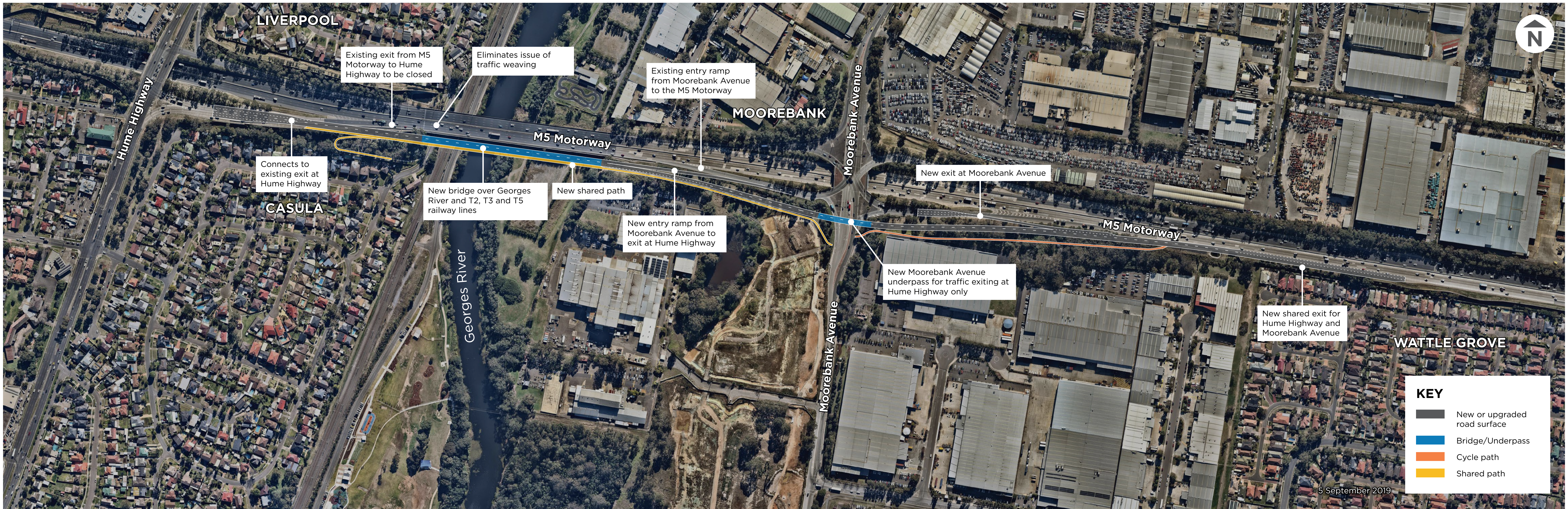


A new underpass for traffic exiting the M5 Motorway for Hume Highway



A new two lane bridge over the Georges River and railway, connecting the M5 and Moorebank Avenue to the Hume Highway

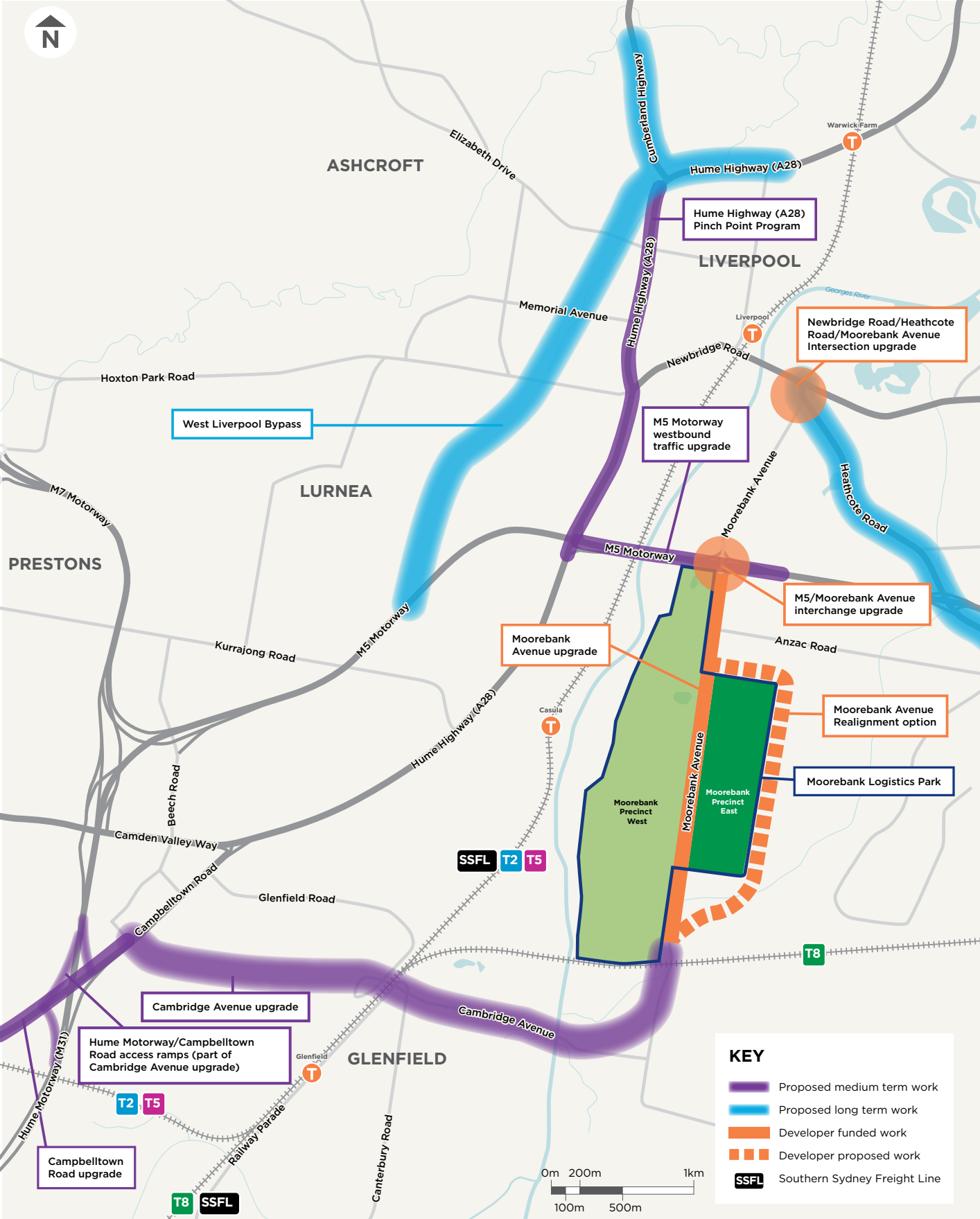
M5 Motorway westbound traffic upgrade



Moorebank Intermodal Terminal Road Access (MITRA) Strategy

Transport for NSW developed the Moorebank Intermodal Terminal Road Access Program to address increasing traffic and freight movements in the Liverpool-Moorebank area over the next 10-20 years. The strategy identified road infrastructure improvements to meet the forecast growth of Liverpool CBD and regional traffic, together with construction of the Moorebank Logistics Park. The Park will generate over 6,600 heavy vehicle trips and 10,000 light vehicle trips per day.

The M5 Motorway westbound traffic upgrade is one of the road infrastructure improvements identified in the MITRA strategy.



Have your say

We are seeking feedback on the recommended design for the M5 Motorway westbound traffic upgrade. Please send your comments through to us by **Friday, 21 February 2020** by email, post or online via the project website (see contact details on this page).

The Options Report is available online at:
rms.work/m5westbound.

Community information sessions

We are hosting two community information sessions to provide you with an opportunity to ask the project team questions and seek further information. A formal presentation will not be given so please feel free to drop in any time at one of the following sessions:

Liverpool Library, Orange room

170 George Street Liverpool

Saturday 14 December 2019 – 10am to 12noon

Casula Powerhouse Arts Centre

1 Powerhouse Road, Casula NSW 2170

Wednesday 5 February 2020 – 5pm to 7pm

If you are unable to attend one of the information sessions, you can contact us to discuss, or to arrange another time that is suitable to meet. To make a submission or to join the mailing list, please contact the project team.

What are the next steps?

All comments received during consultation for the recommended design will be considered in decision making and development of the final concept design. A report which summarises comments or questions received for the project, and our responses, will be published on the Roads and Maritime website. If you submit feedback you will receive notification of the report's availability.

We will keep community members and stakeholders informed of the progress throughout delivery of the project.



*subject to project approval and funding availability

Contact us



1800 519 525



m5moorebank@rms.nsw.gov.au



rms.work/m5westbound



M5 Motorway westbound traffic upgrade
PO Box 973, Parramatta NSW 2124



If you need help understanding this information, please contact the Translating and Interpreting Service on 131 450 and ask them to call us on 1800 519 525.



December 2019
RMS.19.1494

Privacy Transport for NSW ("TFNSW") is subject to the Privacy and Personal Information Protection Act 1998 ("PPIP Act") which requires that we comply with the Information Privacy Principles set out in the PPIP Act. All information in correspondence is collected for the sole purpose of delivering this project. The information received, including names and addresses of respondents, may be published in subsequent documents unless a clear indication is given in the correspondence that all or part of that information is not to be published. Otherwise Transport will only disclose your personal information, without your consent, if authorised by the law. Your personal information will be held by Transport at 27 Argyle Street, Parramatta, 2124 NSW. You have the right to access and correct the information if you believe that it is incorrect.