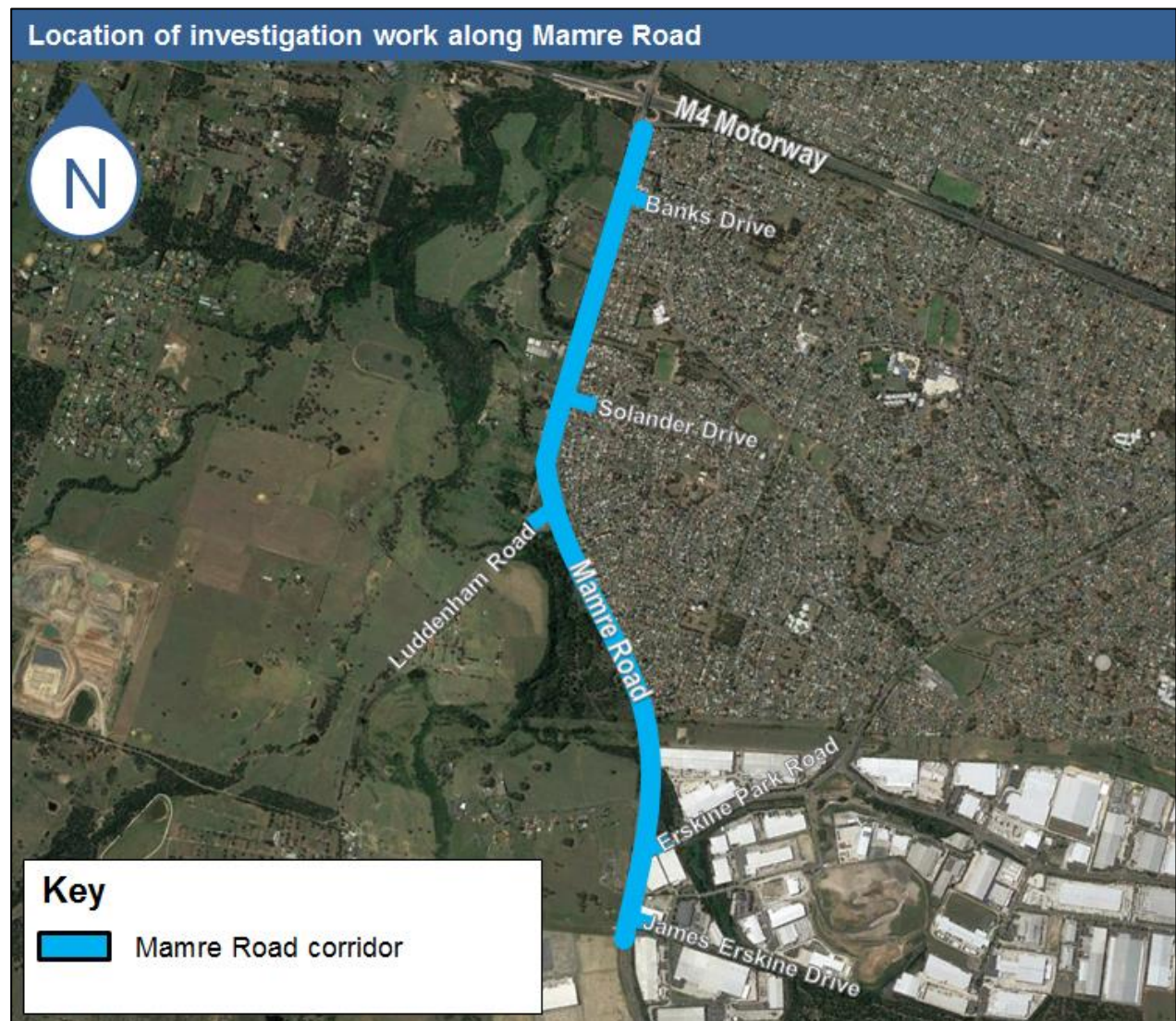


## Continuing work on Mamre Road between the M4 Motorway, St Clair and James Erskine Drive, Erskine Park from Wednesday 1 June

The NSW Government is planning the upgrade of Mamre Road between the M4 Motorway, St Clair and Erskine Park Road, Erskine Park to reduce congestion and improve safety and travel times.



## Our work

Transport for NSW will carry out additional investigation work to enable the project to progress to detail design. Work will be done between the M4 motorway at St Clair and James Erskine Drive, Erskine Park. We will be using utility/site vehicles, traffic control vehicles and equipment, backhoe or small excavator, truck mounted- drilling rig and vacuum truck to carry out this work.

We are still in the process of determining the Review of Environmental Factors and shall keep you updated with the progress.

## Our work schedule

Work will take place from **Wednesday 1 June** to **Friday 29 July**, weather permitting. Work will be done between **7 am** and **6 pm**, on **weekdays** and between **8 am** to **1 pm** on **Saturdays**.

To complete the work safely and minimise the impact on road users, some work must be done at night. Night work will be undertaken during the hours of **9 pm** to **5 am weekdays** and **Sundays**. Work will be done along the length of the corridor, and we will not work for more than two consecutive nights at the same location.

## How will the work affect you?

Our work may be noisy at times, but we will do everything we can to minimise its impact including carrying out noisier work before midnight and facing lighting away from residences.

## Traffic changes

There may be temporary traffic changes. Please keep to the speed limits, follow the signs and traffic controllers' directions. For the latest traffic updates, you can call 132 701, visit [livetraffic.com](http://livetraffic.com) or download the Live Traffic NSW App.

Thank you for your patience during this important work.

## Contact us

If you have any questions or would like more information on the Mamre Road upgrade, please contact our project team:



1800 696 564



[mamreroadupgrade@transport.nsw.gov.au](mailto:mamreroadupgrade@transport.nsw.gov.au)



<http://nswroads.work/mamreroadupgrade>



PO Box 973 Parramatta NSW 2124



If you need help understanding this information, please contact the Translating and Interpreting Service on **131 450** and ask them to call us on **1800 696 654**