

Milsons Point Wharf expansion

ENVIRONMENTAL AND SOCIO-ECONOMIC IMPACTS

December 2016

Transport for NSW has a statutory responsibility to assess the environmental, social and economic impacts of its infrastructure projects as part of the planning approvals process.

There will be temporary impacts during the work to expand the wharf. These will be carefully managed and measures put in place including:

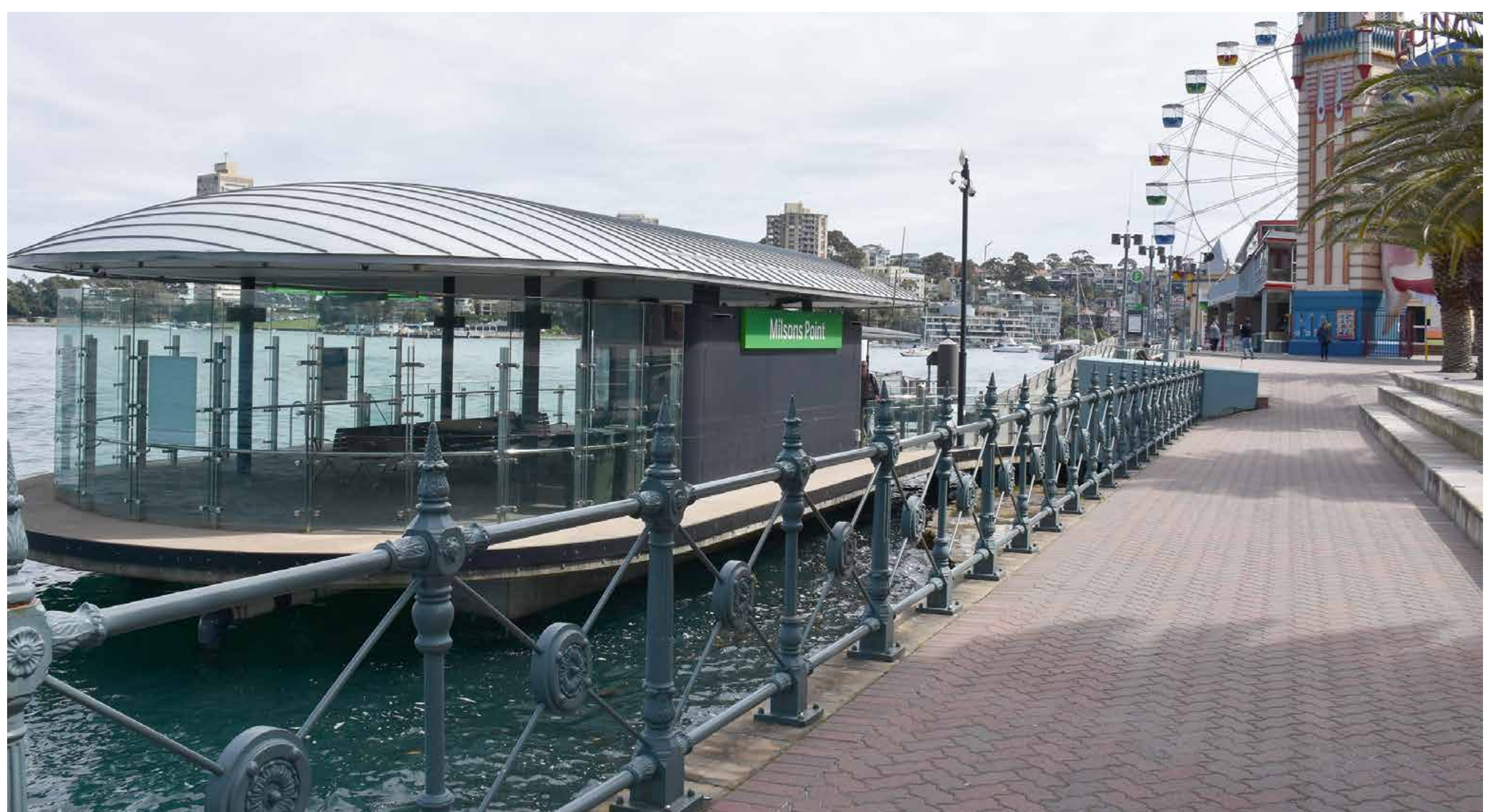
- ▶ Informing customers of alternative transport options during the temporary closure of Milsons Point Wharf
- ▶ Minimising the disturbance of sediments and rocks on the harbour bed
- ▶ Minimising disturbance to aquatic life
- ▶ Minimising temporary noise impacts on nearby residents wherever possible
- ▶ Notifying nearby residents and businesses of early morning and night work
- ▶ Minimising potential impacts on traffic, pedestrian and cycle access
- ▶ Keeping nearby residents, businesses and customers up-to-date.

The highly visual setting has been considered and the wharf design aims to minimise any potential visual impact through choice of materials, design of expanded waiting area and positioning of the second berthing face.

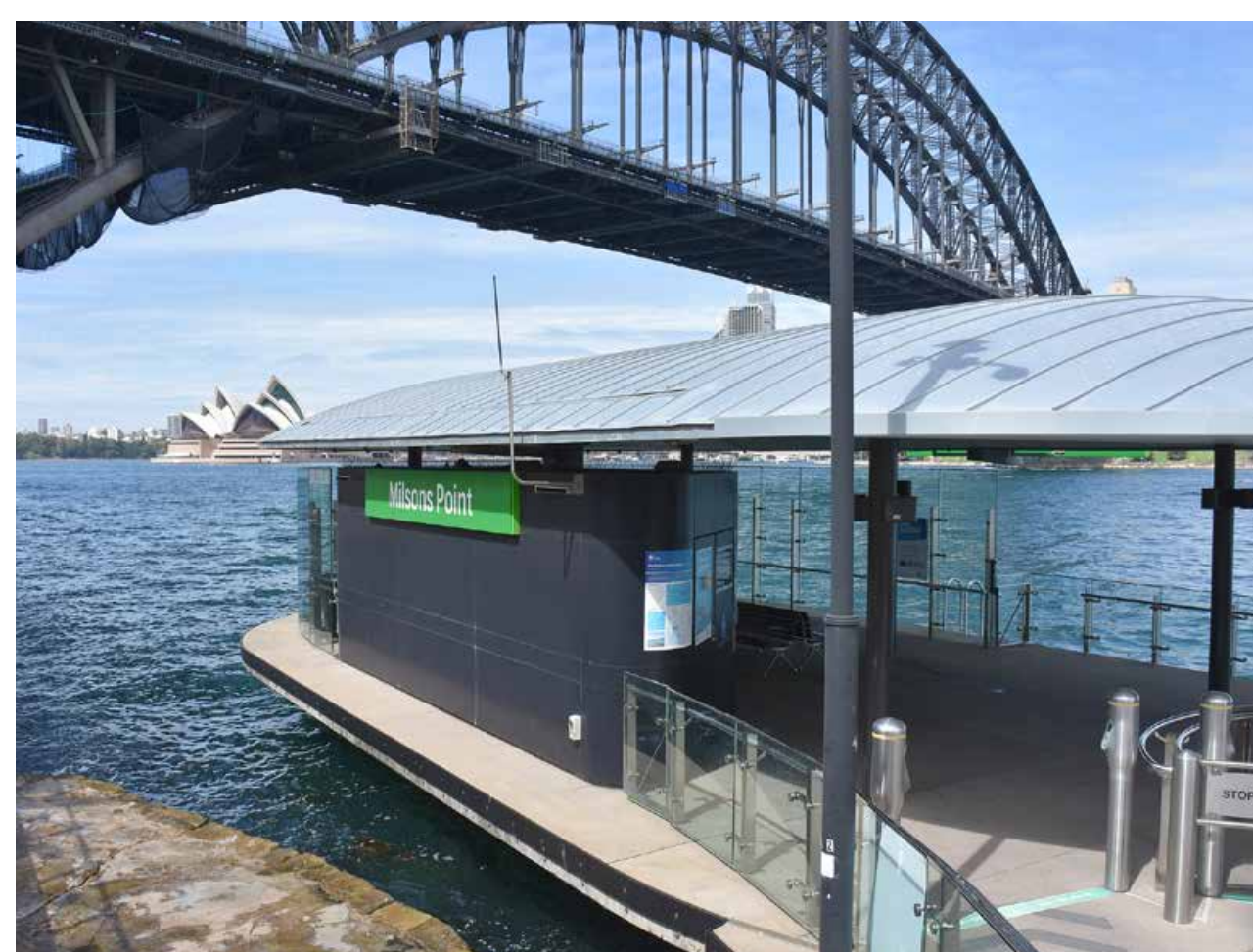
The current wharf structures do not have heritage significance. However, Milsons Point Wharf is within the buffer zone of the World Heritage Listed Sydney Opera House and is adjacent to the State Heritage Listed Sydney Harbour Bridge, Luna Park and North Sydney Pool. Construction and operational impacts of the proposal on these key heritage elements, are considered in the Review of Environmental Factors.

The historic usage of the wharf as a ferry wharf will be retained, with ferry services resuming on completion of the upgrade.

Environmental, social and economic impacts will be considered in the Review of Environmental Factors, which is publicly displayed for comment.



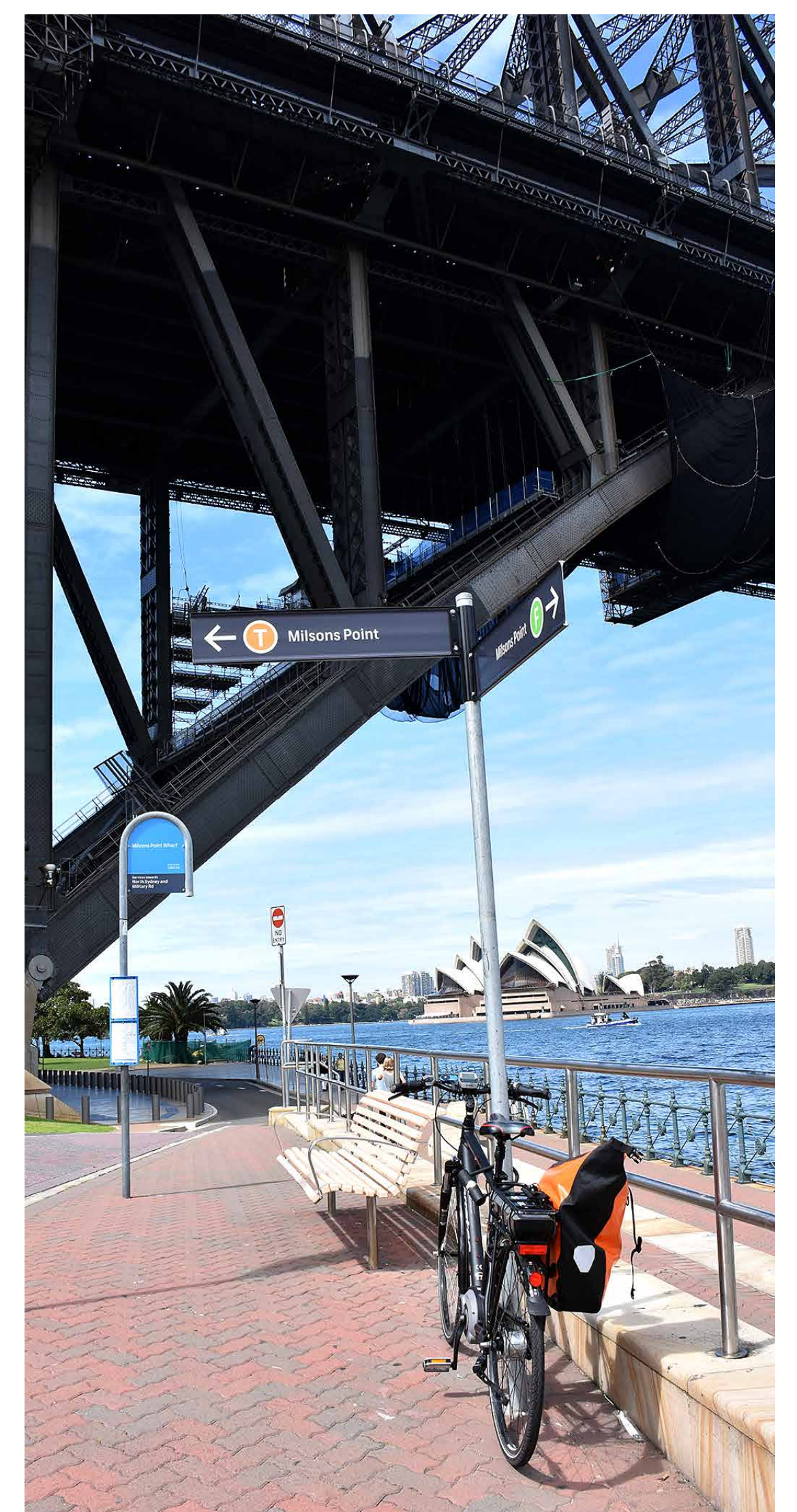
The existing Milsons Point Wharf viewed from the land



The existing Milsons Point Wharf viewed from the land



Bradfield Park



Milsons Point Wharf bus stop