

Milton Ulladulla bypass: preferred strategic corridor

Consultation period extended to 14 February 2021

We would like to thank the community for taking the time to provide their feedback on the preferred strategic corridor option for Milton Ulladulla bypass so far. Over 1000 submissions have been received to date.

The consultation period will be extended until **Sunday 14 February 2021** and we are encouraging locals and visitors to have their say.

We are also carrying out additional traffic data collection throughout Milton, Ulladulla Burrill Lake and Lake Tabourie over the summer holiday period to better understand how the transport network operates over the peak holiday period.

Why was this option chosen?

Feedback received to date has focused on why the preferred strategic corridor option was chosen and what effects a bypass would have on traffic through local townships.

This table compares the preferred strategic corridor and other corridor options which bypass Burrill Lake and Lake Tabourie.

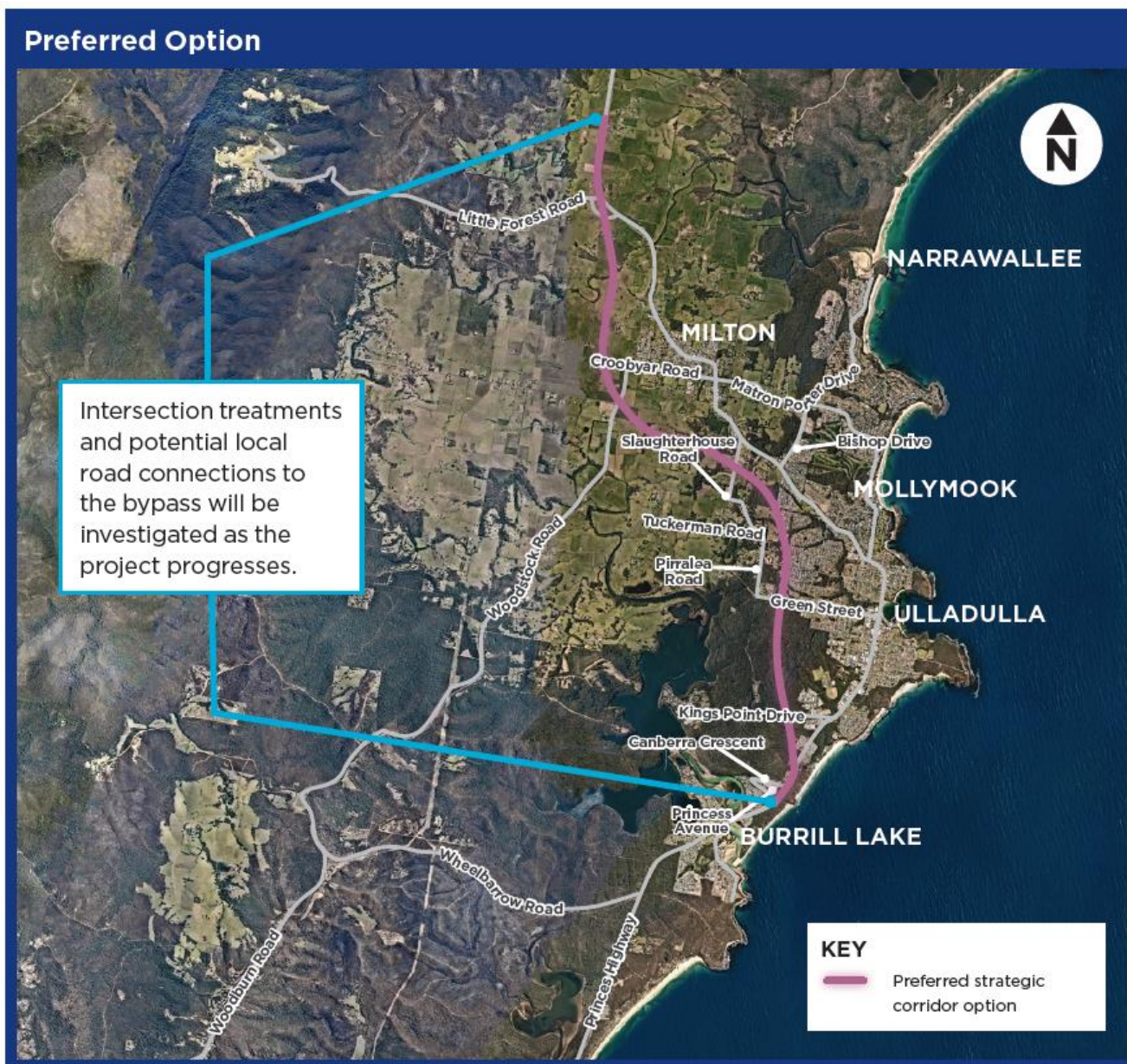
	Preferred strategic corridor	Bypasses Burrill Lake	Bypasses Lake Tabourie
Potential to provide connections to local roads to improve use of the bypass?	High	Low	Low
Reduction in weekday traffic through Milton*	About 55%	About 25%	About 20%
Reduction in weekday traffic through Ulladulla*	About 30%	About 15%	About 10%
Impacts to National Park?	No impact	About 25 hectares	About 35 hectares

* Based on 2041 modelled traffic figures for an average day based on the number of potential connections from bypass to local road network assessed.

When compared to the further western corridors, the preferred strategic corridor for the Milton Ulladulla bypass **provides greater opportunity to connect to town centres**. This would **enable more traffic to use the bypass during both weekday and peak holiday periods**. This would make day to day journeys in and around town centres safer and more reliable.

Upgrades south of the bypass would be considered as part of the Burrill Lake to Batemans Bay upgrade project. More information on how the highway upgrade would improve safety and efficiency for transport users south of the bypass will be available in 2021.

For more information on how the preferred option was identified, a copy of the **preferred strategic corridor option report** is available at nswroads.work/miltonulladullabypass and at Ulladulla Library.



Have your say



1800 719 759



princeshighway@transport.nsw.gov.au



nswroads.work/miltonulladullabypass

PO Box 477, Wollongong, NSW, 2520



If you need help understanding this information, please contact the Translating and Interpreting Service on 131 450 and ask them to call us on 1800 719 759.