

Temporary roundabout at the Mitchell Highway (Cobra Street) and Fitzroy Street intersection upgrade in Dubbo from Friday, 29 October

Transport for NSW is continuing work on the Mitchell Highway (Cobra Street) and Fitzroy Street intersection upgrade in Dubbo. As part of this next stage of works, we will be installing a temporary roundabout to allow our crews the space to install the necessary wiring and cabling, before we switch on the permanent traffic signals at the end of the year. We have included a map to explain the changed traffic arrangements.

To minimise impact on motorists, preparation for this next stage of works will take place at night between **5pm and 7am on Friday 29 October**. A detour will be in place during the traffic switch. We will let you know in advance if we need to do any work outside these times.

We will be working between **7am and 6pm from Monday to Saturday** and expect to complete the next stage of work in three weeks weather permitting.

How will the work affect you?

The work will involve the use of machinery which generates some noise. We will make every effort to minimise noise by arranging the work in stages at different locations, completing noisier activities earlier in the night and turning off machinery and vehicles when not in use. To facilitate work access, kerb side parking will be restricted on Fitzroy Street and Cobra Street.

Traffic changes

There will be some temporary traffic changes to ensure the work zone is safe. The central median on Fitzroy Street and Cobra Street will be closed for concreting work. Motorist will still be able to travel in all directions at the intersection via the temporary roundabout. During this time, no right hand turn manoeuvres will be allowed for westbound vehicles turning into Hopetoun Street from Cobra Street and return access from Hopetoun Street to Cobra Street will be limited to a left hand turn.

Lane closures and a 40km/h speed limit will be in place during work hours and may affect travel times. Motorists are advised to allow additional five minutes travel time, drive to the conditions and follow the directions of signs and traffic control.

Please keep to speed limits and follow the direction of traffic controllers and signs. For the latest traffic updates, you can call 132 701, visit livetraffic.com or download the Live Traffic NSW App

Detour arrangements

From 5pm Friday 29 October the following local detour arrangements will be in place:

- Eastbound and Westbound Cobra Street motorists will be required to detour via Bultje Street through Gipps Street, and Rawson Street.
- Northbound and Southbound Fitzroy motorists will need to detour to Gipps Street via Quinn Street or Bultje Street.

Covid-19

Work crews will be adhering to strict Covid-19 protocols with approved Covid-19 safety plans in place and NSW Health work permits. The program of work is subject to change in response to any further government restrictions that may be put in place to manage Covid-19.

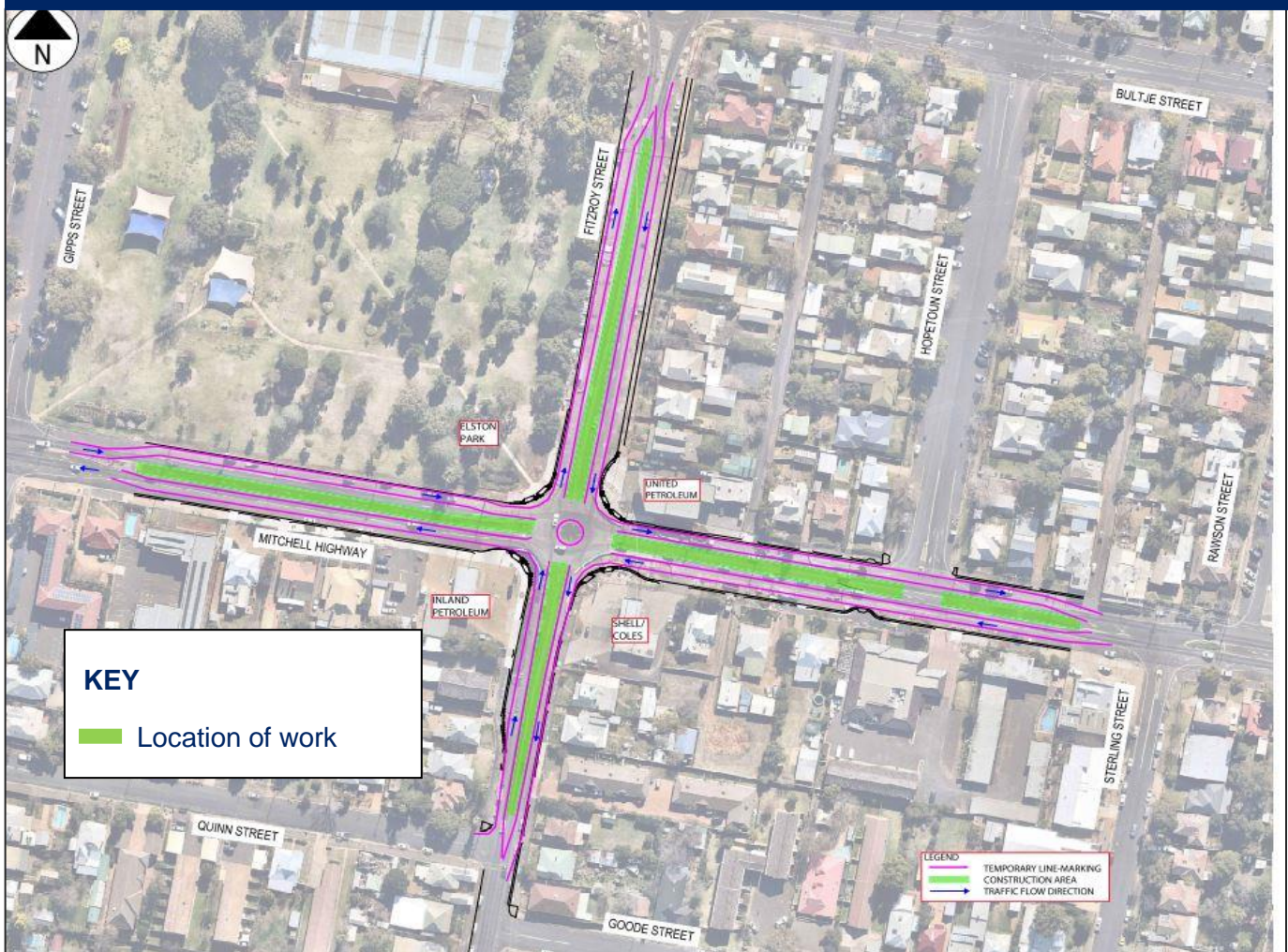
Contact

If you have any questions, please contact the project team on 1800 803 818 or Dubboprojects@transport.nsw.gov.au.

For more information on our projects, visit nswroads.work/dubbo

Thank you for your patience during this important work.

Location of work at the Mitchell Highway and Fitzroy Street intersection upgrade



If you need help understanding this information, please contact the Translating and Interpreting Service on 131 450 and ask them to call us on 1800 167 499.