

Building a better Dubbo

Road work, that works for you - community update



Artist's impression of the Newell Highway and Mitchell Highway intersection

The NSW Government is investing \$195 million in five road projects to build a better Dubbo. We are working to cut down your travel time, make your roads safer and ease congestion in and around Dubbo.

Have your say

Roads and Maritime is inviting feedback on the New Dubbo Bridge Review of Environmental Factors (REF) and concept design until **Friday 28 June 2019**. We are also inviting you to view the proposed designs for the Newell Highway and Mitchell Highway intersection upgrade and the Mitchell Highway (Cobra Street) and Fitzroy Street intersection upgrade. To ensure you stay informed of how changes may benefit or impact you, please register for updates at rms.work/dubbo. Roads and Maritime is building now for a better Dubbo tomorrow and delivering road works, that work for you.

Have
your
say

What is happening?

Plans are now on display for three major road projects in Dubbo, with work under way on two more. This community update provides information on:

- New Dubbo Bridge
- Newell Highway and Mitchell Highway intersection upgrade
- Mitchell Highway (Cobra Street) and Fitzroy Street intersection upgrade
- A snapshot of progress on LH Ford Bridge strengthening and Newell Highway upgrade, West Dubbo.

New Dubbo Bridge

The NSW Government is investing in a new bridge over the Macquarie River in Dubbo, as part of its \$195 million commitment to Building a better Dubbo. The new bridge will ease congestion and enhance reliable access through Dubbo during flood events. Roads and Maritime invites you to provide feedback on the REF by **Friday 28 June 2019**.

Project background

The New Dubbo Bridge provides another river crossing in Dubbo during flood events and will maintain reliability for commuter and heavy freight traffic through Dubbo during these events.

Following investigation of six strategic options and community consultation, River Street was announced as the preferred route for the new bridge in May 2017.

The preferred option has been chosen to improve freight efficiency on the Newell Highway, reduce traffic congestion and provide an alternative route during flood events.

It will assist in easing congestion in Dubbo when needed most.

Project benefits

The New Dubbo Bridge will:

- Provide another river crossing and improve traffic flow during a flood
- Improve traffic flow in Dubbo and reduce average traffic delays
- Improve local freight and heavy vehicle traffic access across the river
- Provide access and plan for future growth in north-west Dubbo
- Provide a new four-way intersection at Thompson Street, Whylandra Street and the Newell Highway
- Improve the efficiency of the Newell Highway during flood times for traffic travelling through Dubbo

What is happening?

Roads and Maritime has developed a concept design and environmental assessment of the proposed New Dubbo Bridge. The concept design and REF will be on display from Monday 27 May 2019 to Friday 28 June 2019.

Proposed project timeline



Review of Environmental Factors

The Review of Environmental Factors (REF) assesses the potential social and environmental impacts of the project and identifies ways to minimise these impacts. The REF investigates the following key issues for the project:

- Traffic and transport
- Socio-economic
- Noise and vibration
- Landscape character and visual
- Biodiversity
- Other impacts

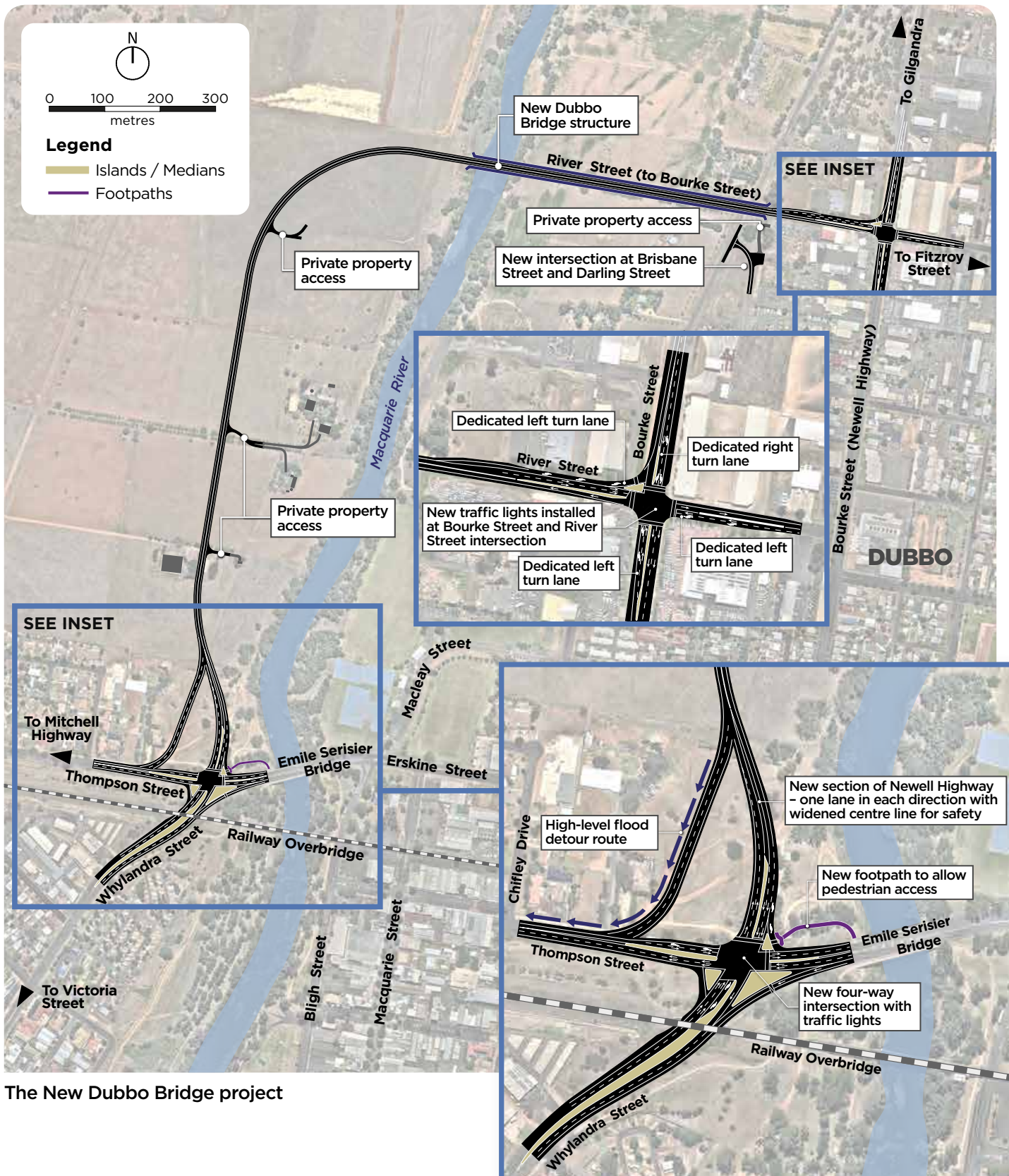
Roads and Maritime will collate and consider the submissions received during the public display of the REF. After community feedback has been received, a submissions report will be prepared that will summarise the comments made and Roads and Maritime's responses.

Further information on the documents within the REF are available on the project website.

Project features of the New Dubbo Bridge

The new 545 metre bridge will connect the western shore of the Macquarie River to River Street, travelling west of the river. The New Dubbo Bridge project will also include:

- New and upgraded intersections at Thompson Street, Whylandra Street, and the Newell Highway
- Realign the Newell Highway with new separated lanes north of Whylandra Street
- Upgrade the intersection at Bourke Street and River Street.



The New Dubbo Bridge project

Mitchell Highway (Cobra Street) and Fitzroy Street intersection upgrade

The NSW Government is investing \$14 million to upgrade the Mitchell Highway (Cobra Street) and Fitzroy Street intersection to improve safety and efficiency.

The roundabout at the intersection will be replaced with traffic lights to improve road safety and traffic efficiency. This route is a vital part of the road network through Dubbo and the surrounding region.

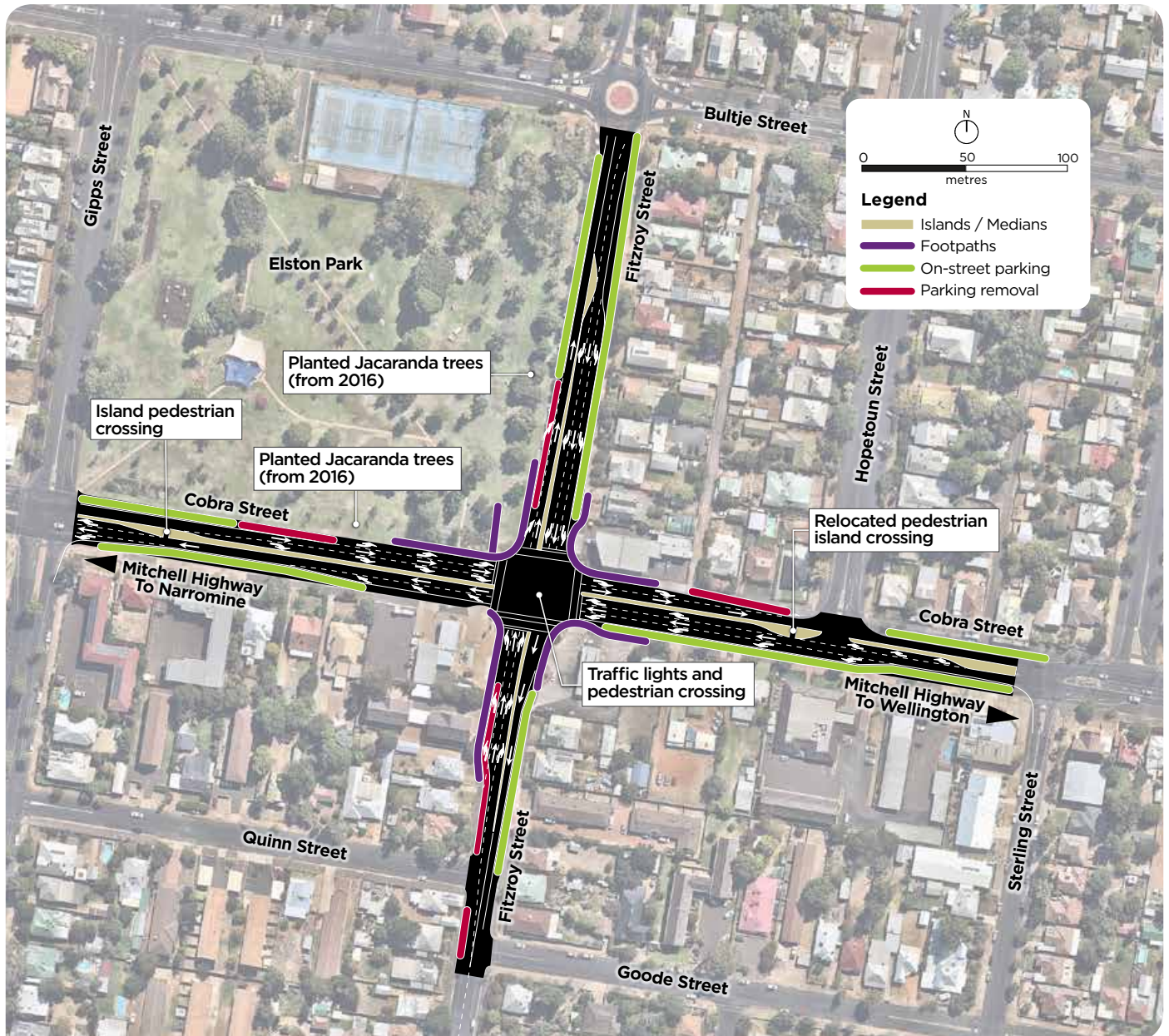
The upgrade will reduce congestion for highway and local traffic, particularly during peak hours.

Project features

The Mitchell Highway (Cobra Street) and Fitzroy Street intersection upgrade includes the following features:

- Traffic lights will replace the existing roundabout
- New pedestrian crossings on all four sides of the intersection, with foot ramps to improve wheelchair and pram access
- Widened intersection to improve traffic flow
- Relocating some underground service utilities and overhead power
- Improvements to street lighting
- Improvements to road quality

The proposed Mitchell Highway (Cobra Street) and Fitzroy Street intersection upgrade



Newell Highway and Mitchell Highway intersection upgrade

The NSW Government is investing \$20 million to upgrade the Newell Highway and Mitchell Highway intersection to improve safety and efficiency. The roundabout will be removed and replaced with traffic lights to better regulate traffic flow.

This critical upgrade will mean reduced congestion at this busy intersection for locals and for traffic travelling through Dubbo.

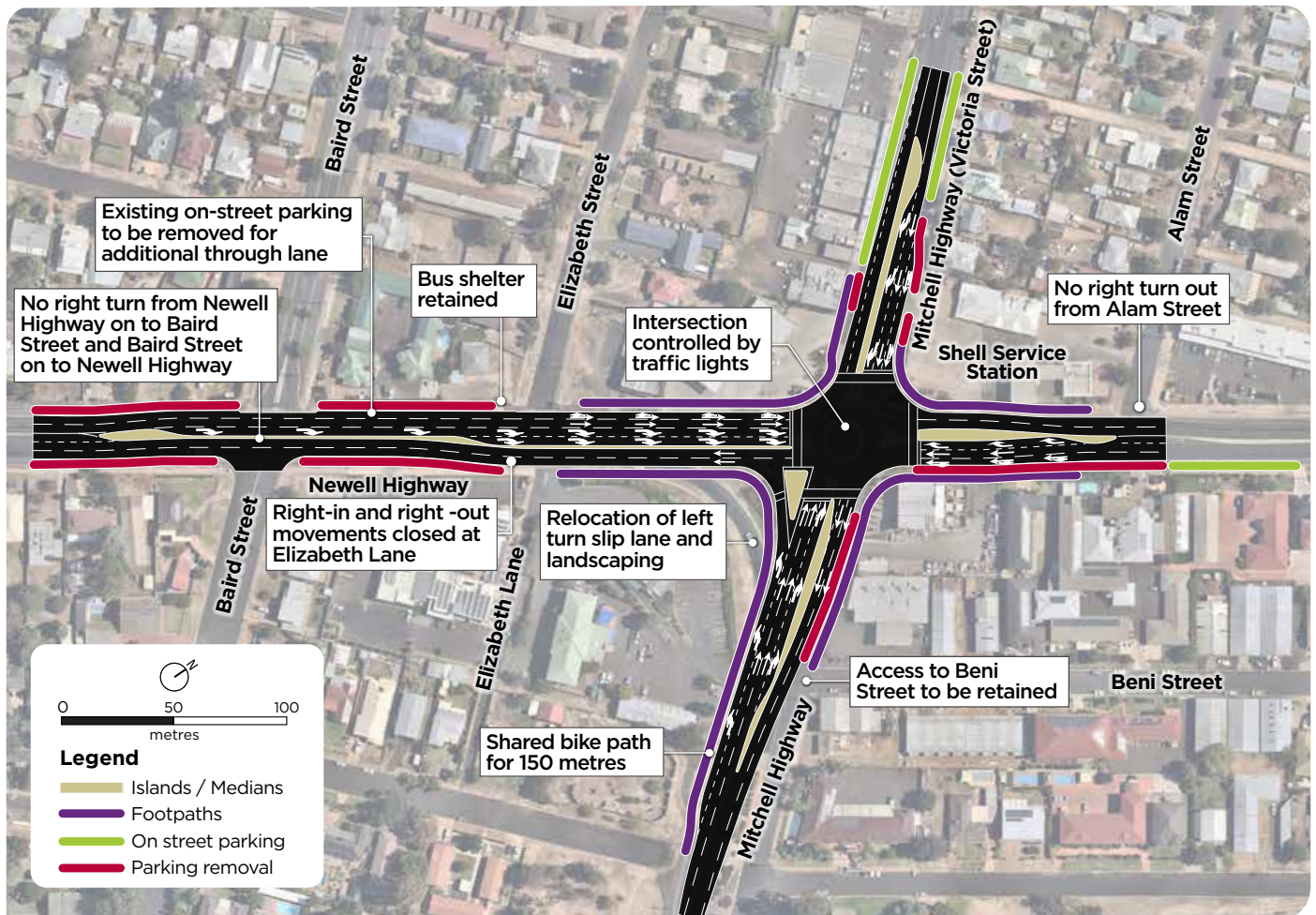
The Newell Highway and Mitchell Highway are part of the National Land Transport Network - an essential link for businesses and industries connecting major cities and regions. These routes are a vital part of the road network through Dubbo and the surrounding region.

Project features

The Newell Highway and Mitchell Highway intersection upgrade includes the following features:

- Traffic lights will replace the existing roundabout
- New pedestrian crossings on all four sides of the intersection, with foot ramps to improve wheelchair and pram access
- Intersection widening to allow for increasing traffic volumes
- Additional merge lane that minimises parking loss at Victoria Street shops
- Relocation of underground utilities and overhead power
- Safer turn paths for road trains (up to 36.5m long)
- New stormwater system to improve drainage in a high rainfall event

The proposed Newell Highway and Mitchell Highway intersection upgrade



 **Roundabout replaced with traffic lights to improve traffic flow**

 **Reduced congestion at this intersection for locals and through traffic**

Local projects under construction

LH Ford Bridge strengthening

The NSW Government is strengthening the LH Ford Bridge to extend its service life, improve safety for motorists and increase efficiency for heavy vehicles.

Work on the bridge started in November 2018 and is expected to be complete in early 2020. We will continue to engage with the community about any impacts as work progresses.

Newell Highway upgrade, West Dubbo

Work has started on the NSW Government's \$12 million upgrade to the Newell Highway in West Dubbo to provide a stronger and longer lasting road.

Stage One of the upgrade, between Golf Links Creek Bridge and north of Minore Road, started work in April 2019.

Have your say

Roads and Maritime is inviting feedback on the New Dubbo Bridge REF and concept design until **Friday 28 June 2019**.

To ensure you stay informed of how any changes may provide benefits or impacts, you can register for updates at rms.work/dubbo.

Roads and Maritime is building now for a better Dubbo tomorrow and delivering road works, that work for you.

Visit us online

Have your say and stay informed by visiting our project website at rms.work/dubbo to view all project documents and to make a submission.

Drop in sessions

We recognise the importance of community feedback and are inviting the community to have its say on the design of the New Dubbo Bridge and the environmental assessments.

We are also inviting you to view the proposed designs for the Newell Highway and Mitchell Highway intersection upgrade and the Mitchell Highway (Cobra Street) and Fitzroy Street intersection upgrade at the following locations:

Shopfront open

2/163 Macquarie Street, Dubbo,
Tuesday 28 May, 9am-3pm
Thursday 30 May, 12pm-6pm
Wednesday 5 June, 9am-3pm
Thursday 13 June, 9am-3pm
Wednesday 19 June, 11am-5pm
Wednesday 26 June, 9am-3pm

Dubbo Farmers Market

Corner Macquarie Street and Newell Highway, Dubbo
Saturday 1 June, 8am-12pm

Orana Mall Stall (in front of Big W)

Windsor Parade, Dubbo
Thursday 6 June, 4pm-7pm

Unstaffed displays

Dubbo Regional Council

Corner Church Street and Darling Street

Western Plains Cultural Centre

Wingewarra Street

Dubbo Visitor Information Centre

Corner Macquarie Street and Newell Highway

TAFE Western Dubbo College

Myall Street Campus

Macquarie Regional Library

Corner Macquarie Street and Talbragar Street

Contact us:

If you have any questions or would like more information on Dubbo road projects please contact our project team:

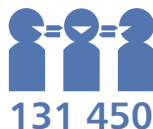
☎ 1800 803 818 (toll free)

@ dubboprojects@rms.nsw.gov.au

🖥 rms.work/dubbo

✉ PO Box 36 Dubbo NSW 2830

Building a better Dubbo



If you need help understanding this information, please contact the Translating and Interpreting Service on **131 450** and ask them to call us on **1800 803 818**



May 2019
RMS. 19.1243

Privacy: Roads and Maritime Services ("RMS") is subject to the *Privacy and Personal Information Protection Act 1998* ("PIIP Act") which requires that we comply with the Information Privacy Principles set out in the PIIP Act. All information in correspondence is collected for the sole purpose of assisting in the assessment of this proposal/ delivering this project. The information received, including names and addresses of respondents, may be published in subsequent documents unless a clear indication is given in the correspondence that all or part of that information is not to be published. Otherwise RMS will only disclose your personal information, without your consent, if authorised by the law. Your personal information will be held by RMS. You have the right to access and correct the information if you believe that it is incorrect.