

Mona Vale Road

Out of hours work

Transport for NSW | March - April 2021

Out of hours work is planned from **8pm to 6am** between **Monday 22 March** and **Thursday 1 April**, weather permitting. If work is delayed due to wet weather, we will try to work a different night that same week.

Manor Road to Mona Vale Cemetery

Work on Mona Vale Road between Manor Road and the Mona Vale Cemetery will occur on:

Monday 22, Tuesday 23 and Friday 26 March 2021

Our work includes:

- on-going road maintenance.
- asphaltting on Mona Vale Road

Monday 29, Tuesday 30 March and Thursday 1 April 2021

Our work includes:

- on-going road maintenance.
- asphaltting on Mona Vale Road

- concrete barrier placement
- line marking

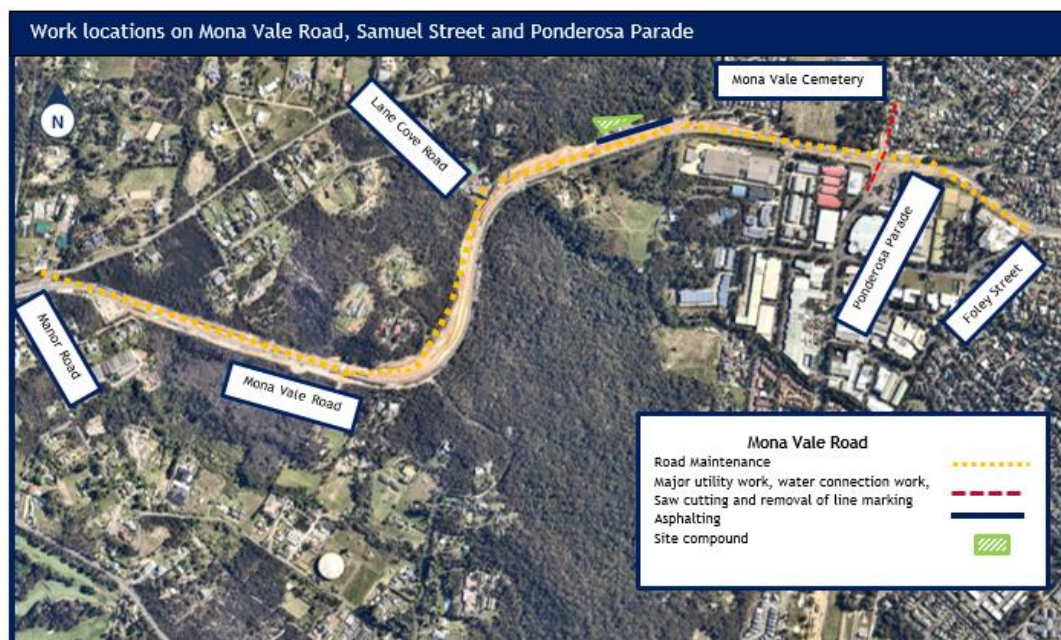
Mona Vale Cemetery to Foley Street

Work on Mona Vale Road between the Mona Vale Cemetery and Foley Street will occur on:

Monday 22, Tuesday 23 and Friday 26 March 2021

Our work includes:

- on-going road maintenance.
- saw cutting
- trenching across Mona Vale Road and Samuel Street near the roundabout to install utilities for Telstra
- removal of existing line marking and re-line marking
- water connection work along Mona Vale Road and Samuel Street
- concrete barrier placement



Monday 29, Tuesday 30 March and Thursday 1 2021

Our work includes:

- on-going road maintenance.
- saw cutting
- trenching across Mona Vale Road and Samuel Street near the roundabout to install utilities for Telstra
- overhead utility works

Mona Vale Road West

We will not be working at the Western Early Work site off Tumburra Street, Ingleside during this time.

How our work will affect you?

We need to carry out our work at night to minimise traffic disruption and reduce safety risks to the workers and motorists.

During our night work we will use:

- backhoes
- tipper trucks
- elevated work platforms
- a roller, a paver and a profiler
- street sweepers,
- compactor and wacker packers
- small cranes
- vacuum trucks
- concrete trucks
- a saw cutting machine
- large trucks
- light vehicles and lighting towers
- excavator with hammer.

We will work up to three nights a week and up to ten nights each month.

We will notify highly impacted residents if there is a change of date.

If you are eligible for alternative accommodation, we will contact you at least 36 hours prior to the work.

Traffic changes

There will be temporary traffic changes to ensure the work zone is safe for workers and road users.

Please keep to speed limits and follow signs and traffic controllers' directions. For the latest traffic updates, you can call 132 701, visit [livetraffic.com](https://www.livetraffic.com) or download the Live Traffic NSW App

Drone

A drone will be used each month to take progress photos and assist with survey work. The drone will stay within the project area.

Contact us

If you have any questions or would like more on the Mona Vale Road project please contact our delivery partner Georgiou:



1800 413 640



monavaleroad@georgiou.com.au



rms.work/mvreast



If you need help understanding this information, please contact the Translating and Interpreting Service on 131 450 and ask them to call us on 1800 413 640.