

Mona Vale Road East upgrade

Project update

Roads and Maritime Services | January 2019



The NSW Government is upgrading Mona Vale Road from two to four lanes between Terrey Hills and Mona Vale. The upgrade is being carried out in two stages to provide customers with a better travelling experience and to improve safety and traffic flow.

Work on the 3.2 kilometre upgrade between Manor Road, Ingleside and Foley Street, Mona Vale will start in early 2019 with completion in 2022, weather permitting.

What's happening now?

Roads and Maritime Services has awarded the contract for construction to Georgiou Group Pty Ltd.

The project team is working hard to prepare the construction management plans and the program for construction.

The project will:

- upgrade the essential link between Sydney's northern beaches and the north shore
- improve safety with additional lanes, widened shoulders, a separated median and a heavy vehicle arrester bed
- provide better access for Ingleside and Elanora Heights residents
- enable fauna to cross Mona Vale Road safely by constructing several fauna crossings.

What happens next?

The first activities on site will include:

- removing trees, shrubs and other vegetation on both sides of Mona Vale Road between Daydream Street, Mona Vale, and Lane Cove Road, Ingleside
- installing traffic controls, such as barriers, signs, linemarking
- setting up the site compound for the project team
- delivering materials and equipment to site.

What can you expect during construction?

During construction, Roads and Maritime will aim to minimise the impact on businesses, residents and the community. However, this is a significant project and there will be disruptions including:

- noise and dust from rock cuttings
- traffic changes such as contra-flows and detours
- traffic delays, including additional heavy vehicles on the roads
- night work
- driveway realignment for several residents on Mona Vale Road
- major utility relocations in and around Ponderosa Parade, Samuel Street and Foley Street.

Our working hours

Standard working hours on the project will be between 7am and 6pm from Monday to Friday and 8am to 1pm on Saturdays.

Roads and Maritime is committed to working with the community and will try to minimise the impact to nearby properties and traffic while work is carried out. Given the challenging terrain, and limited space in some sections, it will be necessary to carry out night work to ensure the safety of motorists and workers and minimise the impact on the road network. Residents and businesses will be informed before any night work starts. Access to properties will be maintained during construction.

Mona Vale Road and Ponderosa Parade intersection

As part of the upgrade, the intersection of Mona Vale Road and Ponderosa Parade will be changed to a traffic light intersection.

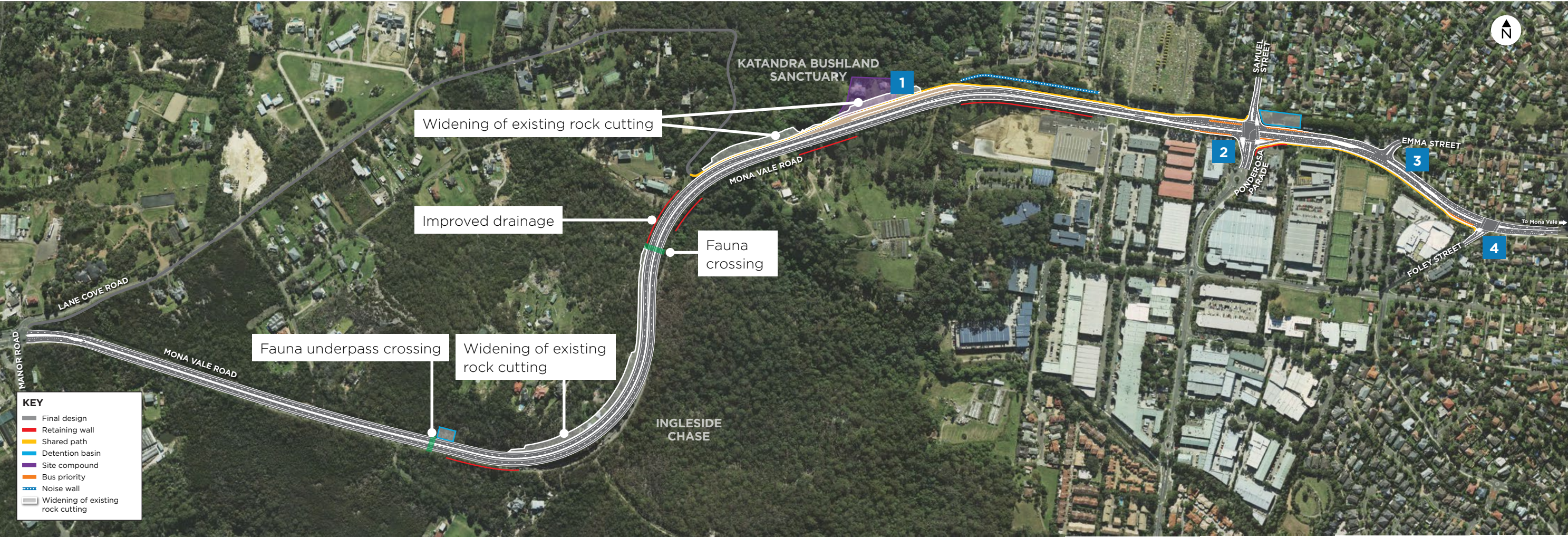
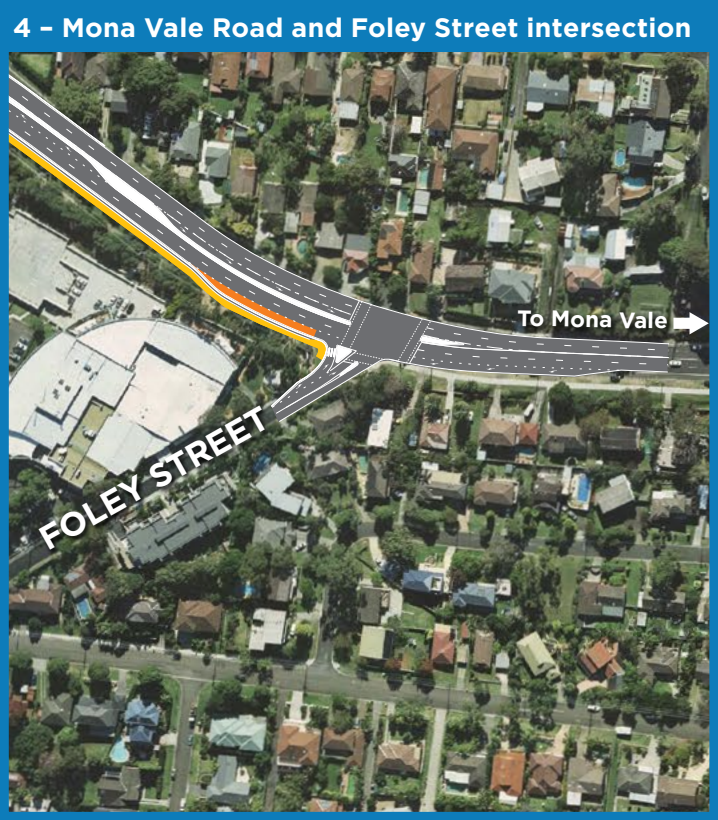
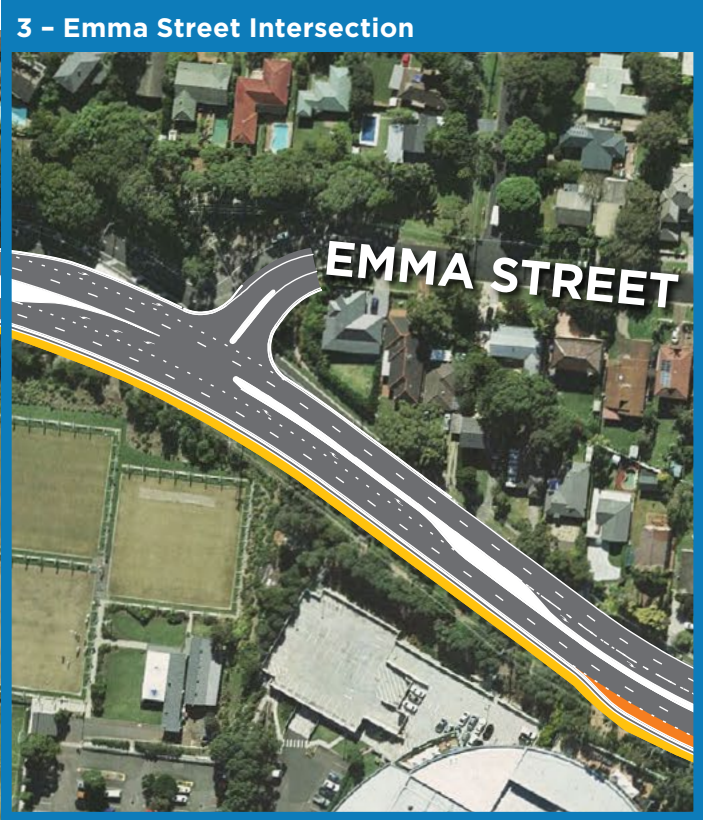
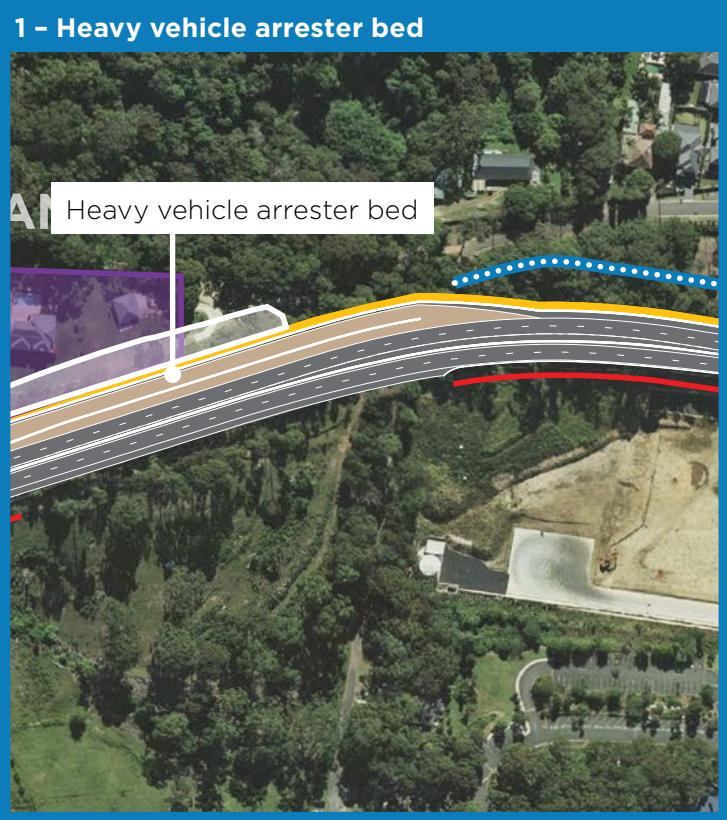
Features of the new intersection include:

- replacing the existing roundabout with new traffic lights and pedestrian signal crossings in all directions
- new bus priority lanes on Mona Vale Road on the approaches to and departures from the intersection
- relocating the eastbound bus stop on Mona Vale Road further east to the departure side of the intersection
- dedicated right-hand turn lanes on all approaches to the intersection
- left-hand slip lanes on all approaches to the intersection.

The upgraded intersection will significantly improve safety at this location, and improve traffic flow entering and exiting the commercial area.



Artist's impression of the new traffic light intersection at Ponderosa Parade and Samuel Street



Vegetation removal

Roads and Maritime will remove trees, shrubs and other vegetation from both sides of Mona Vale Road, to prepare for the construction work.

This work will take place initially between Daydream Street, Mona Vale, and Lane Cove Road, Ingleside, and between Wirreanda Road and Mona Vale Road, Ingleside (see map below).

The work is expected to take up to 16 weeks to complete, with some work carried out at night for the safety of workers and motorists. Affected residents will be notified in advance of all work, and notifications are available on our website and via email distribution.

During clearing, an independent ecologist is on site to ensure no animals are harmed and any found are relocated to a safe habitat.

The project's Construction Flora and Fauna Management Plan will be in place to ensure appropriate measures are in place to protect the environment during construction, including establishing exclusion zones and regular monitoring.

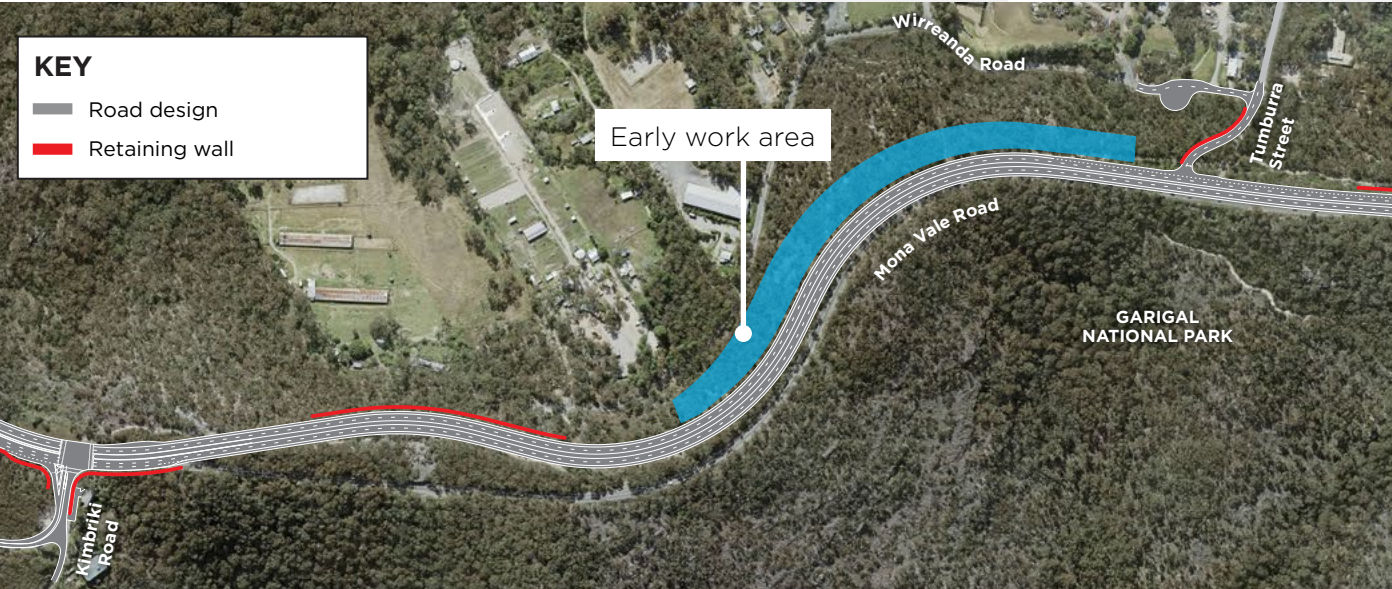
Reducing our carbon footprint

To build the Mona Vale Road East upgrade, we need to excavate large volumes of soil and rock. We have planned a way to reuse some of this excess material to prepare for the Mona Vale Road West upgrade.

We will take some excess material to the Mona Vale Road West section where it will be used to build an embankment in readiness for the future widening work on the West project. Work will include relocating power poles, drainage and removing vegetation.

The two projects have been designed to ensure a minimum amount of material is removed from the projects combined. This will reduce the number of truck movements along the corridor, overall cost for both projects, and reduce our carbon footprint.

The work to build this embankment will form part of the early work for the Mona Vale Road West upgrade, and will start from the first quarter 2019. The work will cover around 850 square metres on the northern side of Mona Vale Road, between Kimbriki Road and Tumburra Street, Ingleside.



Early work between Kimbriki Road and Tumburra Street, Ingleside

Join our mailing list

To receive regular updates and notifications, please call or email us and ask to be added to our mailing list, or sign up via our website. We will be sending regular updates via email throughout the project.



Visit our website to view the proposed upgrades in 3D

Contact us

If you have any questions please contact the project team.



1800 413 640



Mona Vale Road East:
monavaleroad@georgiou.com.au

Mona Vale Road West:
monavaleroad@rms.nsw.gov.au



Mona Vale Road Upgrade
PO Box 973, Parramatta, NSW, 2124



www.rms.nsw.gov.au/mvr

Mona Vale Road West update

We are continuing to prepare the detailed design for Mona Vale Road West, between McCarrs Creek Road, Terrey Hills, and Powder Works Road, Ingleside.

Construction is expected to commence in 2021, subject to funding.



3.2 kilometres of
road widening



Save travel time



Improving
safety



Translating and Interpreting Service

If you need an interpreter, please call the Translating and Interpreting Service (TIS National) on **131 450** and ask them to telephone Roads and Maritime Services on 1800 413 640

Arabic

إذا كنتم بحاجة إلى مترجم، الرجاء الاتصال بخدمة الترجمة الخطية والشفهية (TIS National) على الرقم **131 450** والطلب منهم الاتصال بوكالتكم Roads and Maritime Services على الرقم 1800 413 640

Cantonese

若你需要口譯員，請致電 **131 450** 聯絡翻譯和口譯服務署 (TIS National)，要求他們致電 1800 413 640 聯絡 Roads and Maritime Services

Mandarin

如果你需要口譯員，請致電 **131 450** 联系翻译和口译服务署 (TIS National)，要求他们致电 1800 413 640 联系 Roads and Maritime Services

Greek

Αν χρειάζεστε διερμηνέα, παρακαλείσθε να τηλεφωνήσετε στην Υπηρεσία Μετάφρασης και Διερμηνείας (Εθνική Υπηρεσία ΤΙΣ) στο **131 450** και ζητήστε να τηλεφωνήσουν Roads and Maritime Services στο 1800 413 640

Italian

Se desiderate l'assistenza di un interprete, prego telefonare al Servizio Interpreti e Traduttori (TIS National) al **131 450** chiedendo di contattare Roads and Maritime Services al 1800 413 640

Korean

통역사가 필요하시면 번역통역서비스 (TIS National) 에 **131 450** 으로 연락하여 이들에게 번으로 1800 413 640 Roads and Maritime Services 에 전화하도록 요청하십시오.

Vietnamese

Nếu cần thông ngôn viên, xin quý vị gọi cho Dịch Vụ Thông Phiên Dịch (TIS Toàn Quốc) qua số **131 450** và nhờ họ gọi cho Roads and Maritime Services qua số 1800 413 640



January 2019

RMS 18.1160

Privacy Roads and Maritime Services ("RMS") is subject to the Privacy and Personal Information Protection Act 1998 ("PPIP Act") which requires that we comply with the Information Privacy Principles set out in the PPIP Act. All information in correspondence is collected for the sole purpose of delivering this project. The information received, including names and addresses of respondents, may be published in subsequent documents unless a clear indication is given in the correspondence that all or part of that information is not to be published. Otherwise RMS will only disclose your personal information, without your consent, if authorised by the law. Your personal information will be held by RMS at 27 Argyle Street, 2124 NSW. You have the right to access and correct the information if you believe that it is incorrect.