

Mona Vale Road East - Out of hours work update

The site north of Mona Vale Road between Kimbriki Road and Tumburra Street, Ingleside known as the Western Early Works has been prepared to receive fill material from the main work in the east.

Maintenance work will be undertaken at night along the section of Mona Vale Road parallel to this site. This work will take place as following, weather permitting:

- **Tuesday 8 October: 8pm – 5am**
- **Wednesday 9 October: 8pm – 5am**

There will be noise, vibration and temporary traffic changes during this work. A bobcat grinder, compactor, lights and light vehicles will be used. We will minimise noise where possible. If you are eligible for Alternative Accommodation you will be advised within 24 hours of the work.

For safety reasons, we will close one lane of Mona Vale Road during the night work. During the lane closure, we will reduce the speed limit to 40km/h to ensure the safety of motorists and workers. A stop/slow arrangement will be in place with traffic controllers and signage directing traffic.

Enquiries and registering for work updates

Please contact the community team for enquiries, feedback or any concerns you may have about the work or to register your contact details.

Call: 1800 413 640 (24 hour number).

Email: monavaleroad@georgiou.com.au

For more information about the project, visit rms.work/mvreast

If you need help understanding this information, please contact the Translating and Interpreting Service on 131450 and ask them to call us on 1800 413 640.

Learn more about the project

Please come and meet us at Pittwater RSL Organic Markets on Sunday 13 October from 8.30am – 12pm.

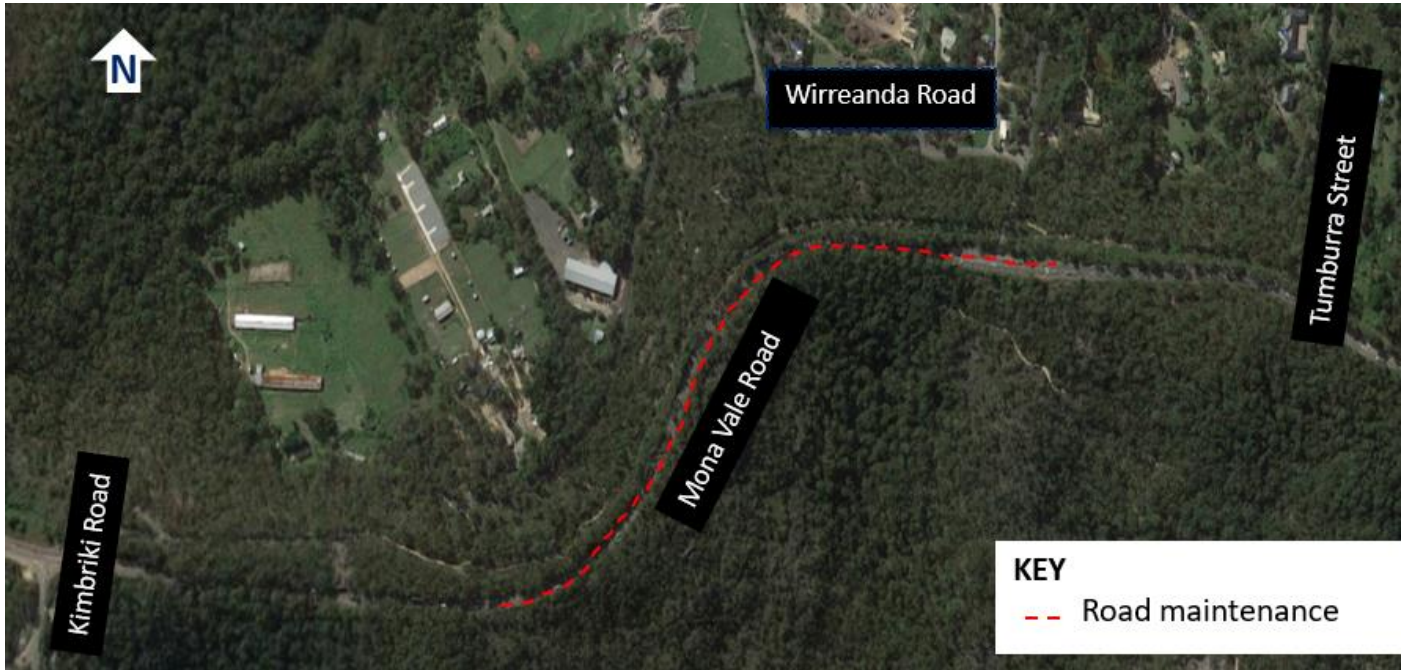
Use of drone

A drone will be used during the last week of each month to:

- take progress photos
- assist with surveying the project

The drone will remain within the project area at all times.

Map showing location of night work



Note: Shaded areas are approximations for general information and illustrative purposes only