

16 August 2021

Partial road closure on Mona Vale Road between Manor Road to Ponderosa Parade

Transport for NSW is upgrading Mona Vale Road between Manor Road, Ingleside and Foley Street, Mona Vale to improve traffic flow, ease congestion and reduce travel times.

Currently infrastructure construction projects are considered essential to the economy and works are continuing on this site as planned under strict Covid safe protocols. The safety and wellbeing of our workforce and the wider community is our highest priority.

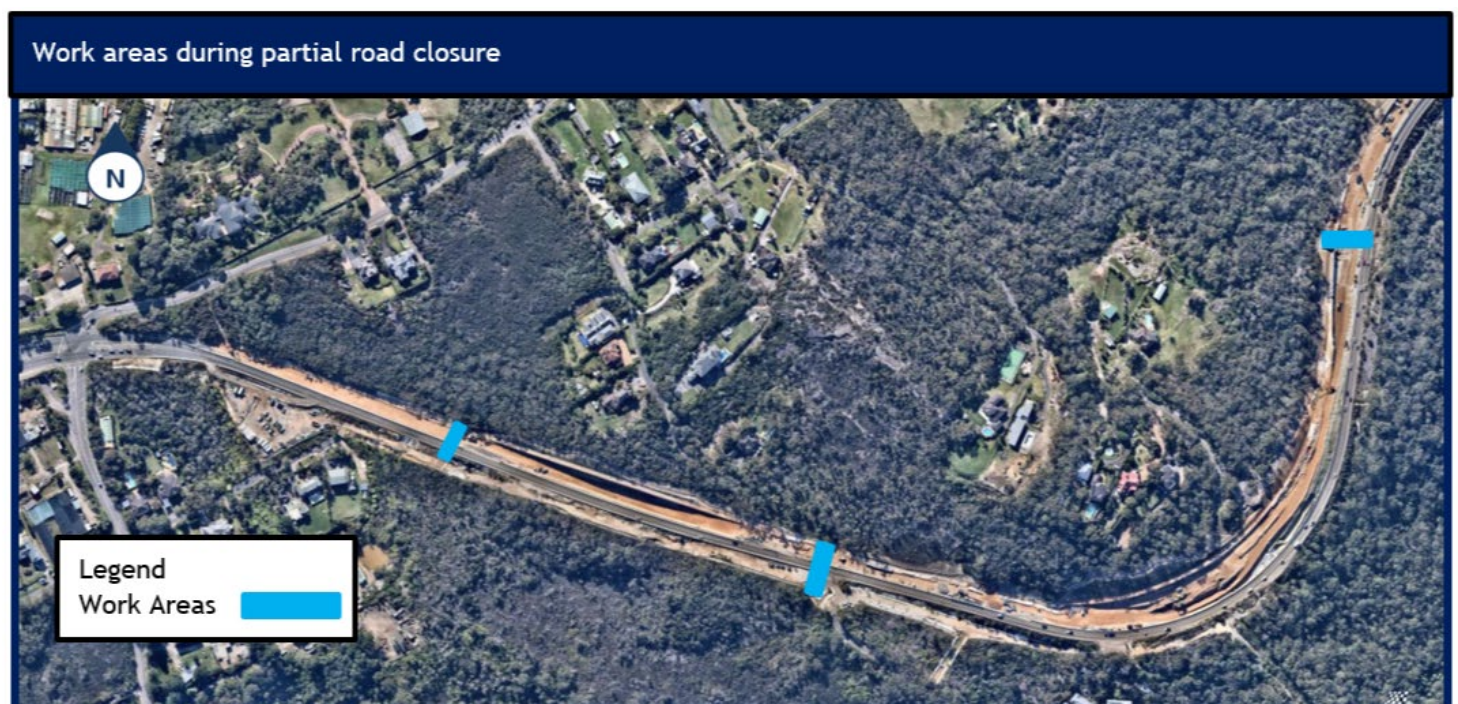
Stormwater drainage works on Mona Vale Road

With the current reduction in traffic on Mona Vale Road we are able to carry out works across the roadway during the day. This work would normally be carried out at night, however with this opportunity, we can eliminate the need for night works this month.

During this work we will **partially close Mona Vale Road between Manor Road to Ponderosa Parade/ Samuel Street roundabout for up to five days from Monday 23 August to Friday 27 August 2021**, weather permitting.

We will be trenching in three locations to install deep drainage pipes across Mona Vale Road. Our working hours will be from **7am to 6pm, Monday to Friday**, weather permitting. In order to be ready to start works on the road from 7am, we will be setting up traffic control from **6am**.

Mona Vale Road will be opened to all traffic after 6pm every day. See map below showing the work areas.



Note: Plan is not to scale and is for general information and illustrative purposes only

Traffic Changes

Mona Vale Road between Manor Road to the Ponderosa Parade/ Samuel Street roundabout will be partially closed for up to five days.

During the partial day closure, only heavy vehicles, buses and emergency services will be allowed to travel along Mona Vale Road between Manor Road and the roundabout.

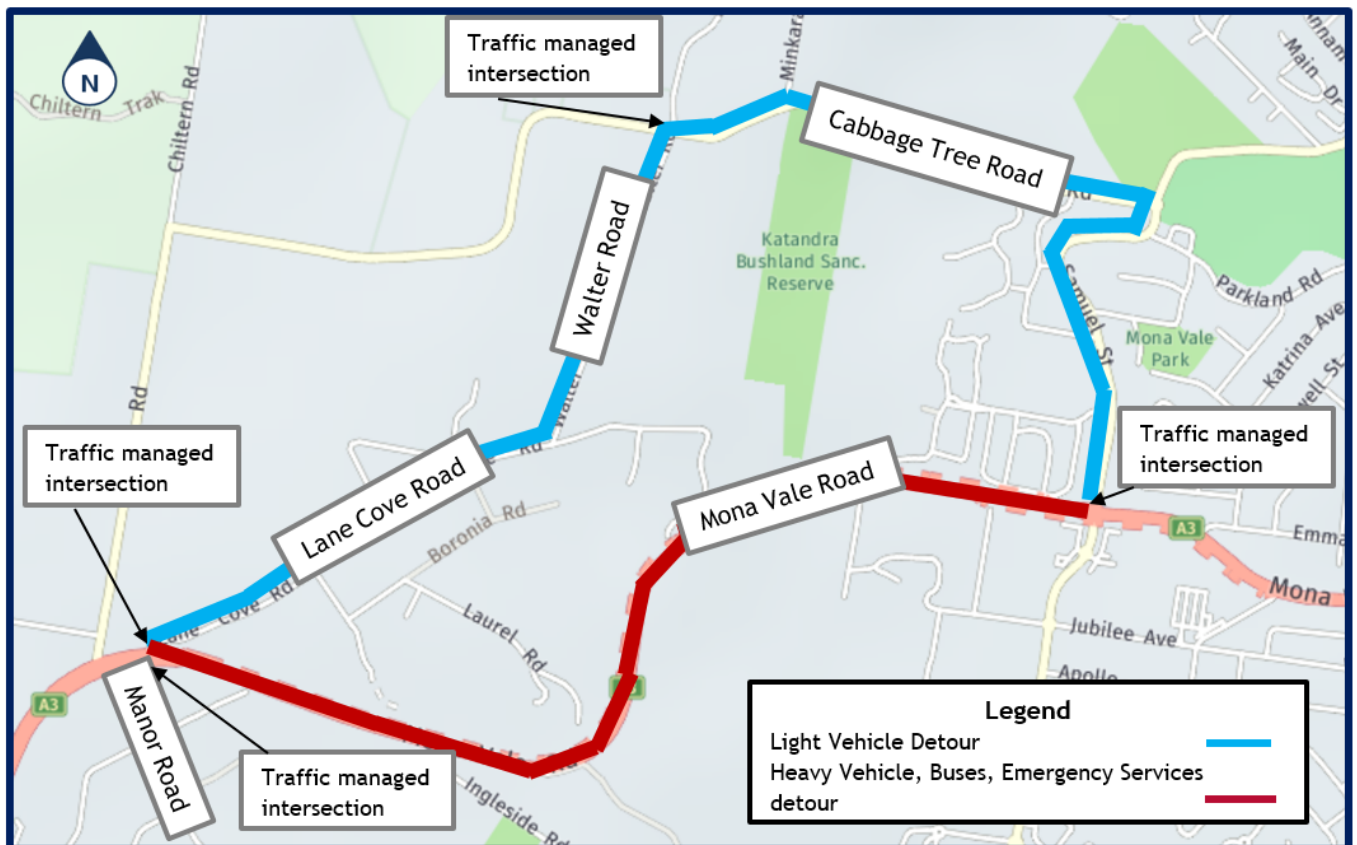
One lane will remain open and a stop/go traffic arrangement will be in place to allow heavy vehicles, buses and emergency service vehicles to travel through the work zones.

Detours will be in place for local traffic and other vehicles. Vehicles travelling eastbound to Mona Vale will travel via Lane Cove Road and Cabbage Tree Road to Samuel Street roundabout. Traffic travelling westbound will travel via Samuel Street roundabout, Cabbage Tree Road and Lane Cove Road to Mona Vale Road. Detour signs and traffic controllers will be in place to guide traffic.

In order to be ready to start works on the road from **7am**, we will be setting up traffic control from **6am**.

There will be no changes to bus services on Mona Vale Road.

Please keep to speed limits and follow signs and traffic controllers' directions. Traffic controllers will be on site to direct traffic throughout the detour and along Mona Vale Road.



Note: Plan is not to scale and is for general information and illustrative purposes only

How will the work affect you?

The work will involve:

- Partial closure of Mona Vale Road as per maps and traffic diversion around the works
- Trenching and installing drainage pipes
- Rearranging gate locations
- Installing foundations along the edge of the roadway

For the latest traffic updates, you can call 132 701, visit livetraffic.com or download the Live Traffic NSW App.

Thank you for your ongoing patience during this work. Upgrading Mona Vale Road will improve the way you move in and around your local area.

Contact us

If you have any questions or would like more on the Mona Vale Road project please contact our delivery partner Georgiou:



1800 413 640



monavaleroad@georgiou.com.au



rms.work/mvreast



If you need help understanding this information, please contact the Translating and Interpreting Service on 131 450 and ask them to call us on 1800 413 640.