

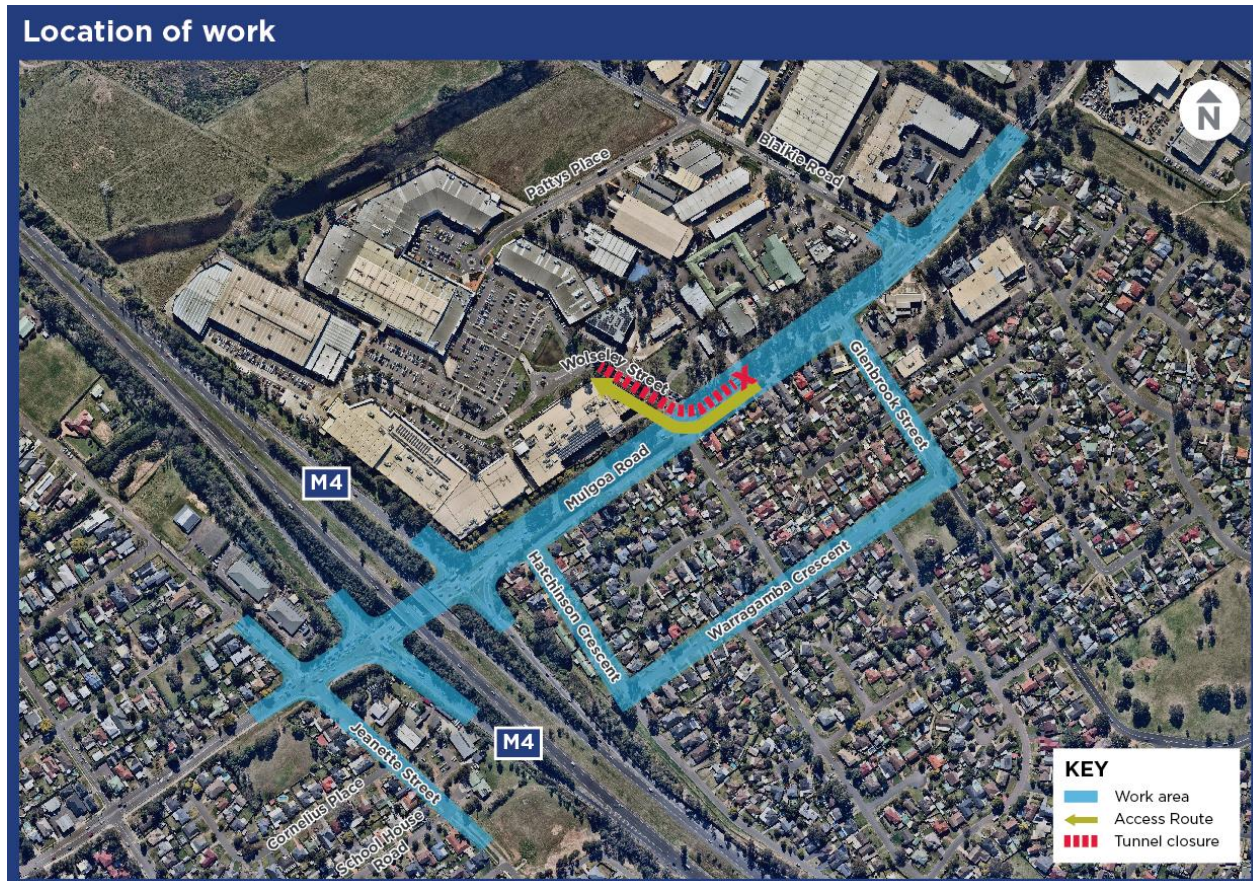


# Investigation work continues on Mulgoa Road and M4 Motorway from Tuesday 15 September 2020

The Australian and NSW Governments are planning the upgrade of Mulgoa Road, Jamisontown between Jeanette Street and Blaikie Road including upgrading the M4 Motorway off ramps.

Transport for NSW will carry out investigation work along Mulgoa Road, Jeanette Street, Factory Road, Hutchinson Crescent, Huron Place, Peter Court, Warragamba Crescent, Glenbrook Street, Blaikie Road and the M4 ramps. This work will help inform the detailed design of the upgrade.

For the investigation work, we need to temporarily close **Wolseley Street Tunnel** on **Tuesday 15 September 2020** between **11pm** and **5am** (weather permitting). Southbound traffic will access Wolseley Street by turning right at the existing traffic lights at Wolseley Street, under a temporary arrangement. Traffic controllers will be on site to direct traffic through the intersection. Northbound traffic will not be affected.



## Our work schedule

Work will be carried out for up to **30** night shifts and **20** day shifts between Tuesday 15 September to Saturday 23 December, weather permitting. No work will take place on public holidays.

Work during the day will occur on weekdays between **7am** and **6pm** and on Saturdays between **8am** and **1pm**. Work at night is expected to occur on some weekdays and weekend nights between **8pm** and **6am**.

## Contact

If you have any questions, please contact the project team on 1800 733 084 or email [mulgoaroadupgrade@rms.nsw.gov.au](mailto:mulgoaroadupgrade@rms.nsw.gov.au).

For more information on our projects, visit [www.rms.nsw.gov.au/projects/sydney-west](http://www.rms.nsw.gov.au/projects/sydney-west).

The work over this period will include the following activities:

- investigations of pipes
- potholing to locate subsurface utilities
- investigations of the M4 overpass bridge
- Surveying.

The plant and machinery used will be a small excavator, jet blaster and sucker truck.

## How will the work affect you?

Our work may be noisy at times but we will try and reduce the impact on you by doing the noisier work before 11pm and turn off the machinery when not in use.

## Traffic changes

Temporary night-time single lane closures will be in place on Mulgoa Road and the M4 entry and exit ramps. Local roads will have temporary traffic changes. Traffic changes will be in place to ensure the work zone is safe for workers and motorists. Traffic control and a reduced speed limit of 40 km/h will be in place for the safety of workers and motorists.

For the latest traffic updates, you can call 132 701, visit [livetraffic.com](http://livetraffic.com) or download the Live Traffic NSW App.

To register for updates on this project, please email your contact details through to [mulgoaroadupgrade@rms.nsw.gov.au](mailto:mulgoaroadupgrade@rms.nsw.gov.au). Thank you for your patience during this important work.



If you need help understanding this information, please contact the Translating and Interpreting Service on 131 450 and ask them to call us on 1800 733 084.