



Australian Government

BUILDING OUR FUTURE



November 2019

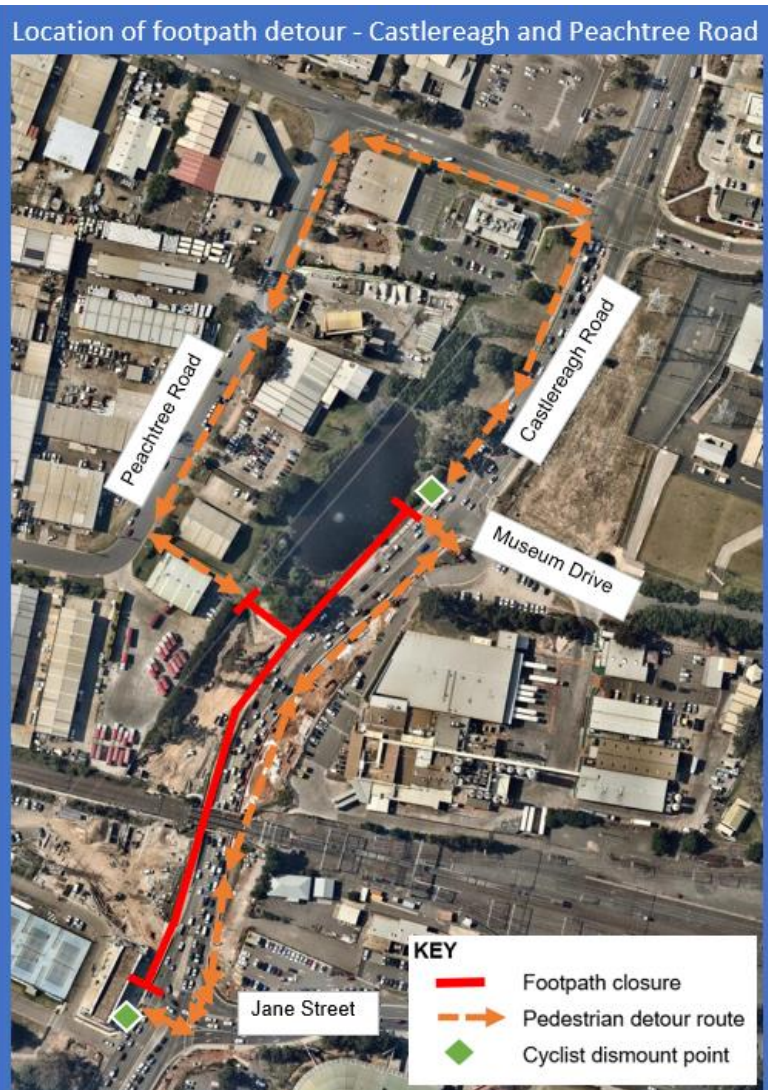
Temporary closure of the footpath on the western side of Castlereagh Road from Wednesday 4 December 2019

The Australian and NSW governments are jointly funding the \$105 million upgrade of Mulgoa Road, Penrith from Union Road to Museum Drive.

We are progressing with important work to replace the railway bridge and widen the road. The benefit will be improved traffic flow along the Mulgoa Road and Castlereagh Road corridor including Jane Street and High Street.

From **Wednesday 4 December 2019** until **mid-March 2020**, we will temporarily close the footpath on the western side of Castlereagh Road between Jane Street and Museum Drive to allow for earthwork, installing the new bridge and building new road surface and pedestrian path.

We will make every effort to complete and reopen the improved footpath earlier than scheduled.





Australian Government

BUILDING OUR FUTURE



Our work schedule

We will carry out work requiring the footpath closure between **Wednesday 4 December 2019 and mid-March 2020, weather permitting.**

Standard work hours are **Monday to Friday** between **7am and 6pm**, **Saturdays** between **8am and 1pm** and **some nights** from **Monday to Sunday** between **6pm and 7am.**

Contact

If you have any questions, please contact our delivery partner, McConnell Dowell on 1800 951 118 or via email mulgoaroad.penrith@mcdgroup.com.

For more information about our projects visit rms.nsw.gov.au/projects/sydney-west/index.html

During the temporary closure, the following key activities will take place:

- truck movements for delivery of materials and equipment including excavators
- removal of existing footpath
- relocation of utilities
- earthwork to enable the installation of the new bridge
- construction of new road surface and footpath.

How will the work affect you?

The existing footpath will be closed and a pedestrian detour will be in place on the opposite side of Castlereagh Road and Peachtree Road. The detour route includes safe pedestrian crossings at Museum Drive and Jane Street. Cyclists will be required to dismount on the western side of Castlereagh Road for the detour.

Our work may be noisy from concrete saws and earthwork machinery. We have measures in place to minimise impacts including the completion of noisier tasks during the day or by **11pm**.

For your safety, please follow the detour route outlined in the map and the direction of the signs.

We apologise for any inconvenience this work may cause and appreciate the patience of residents, pedestrian users and cyclists.



If you need help understanding this information, please contact the Translating and Interpreting Service on 131 450 and ask them to call us on 1800 951 118.