

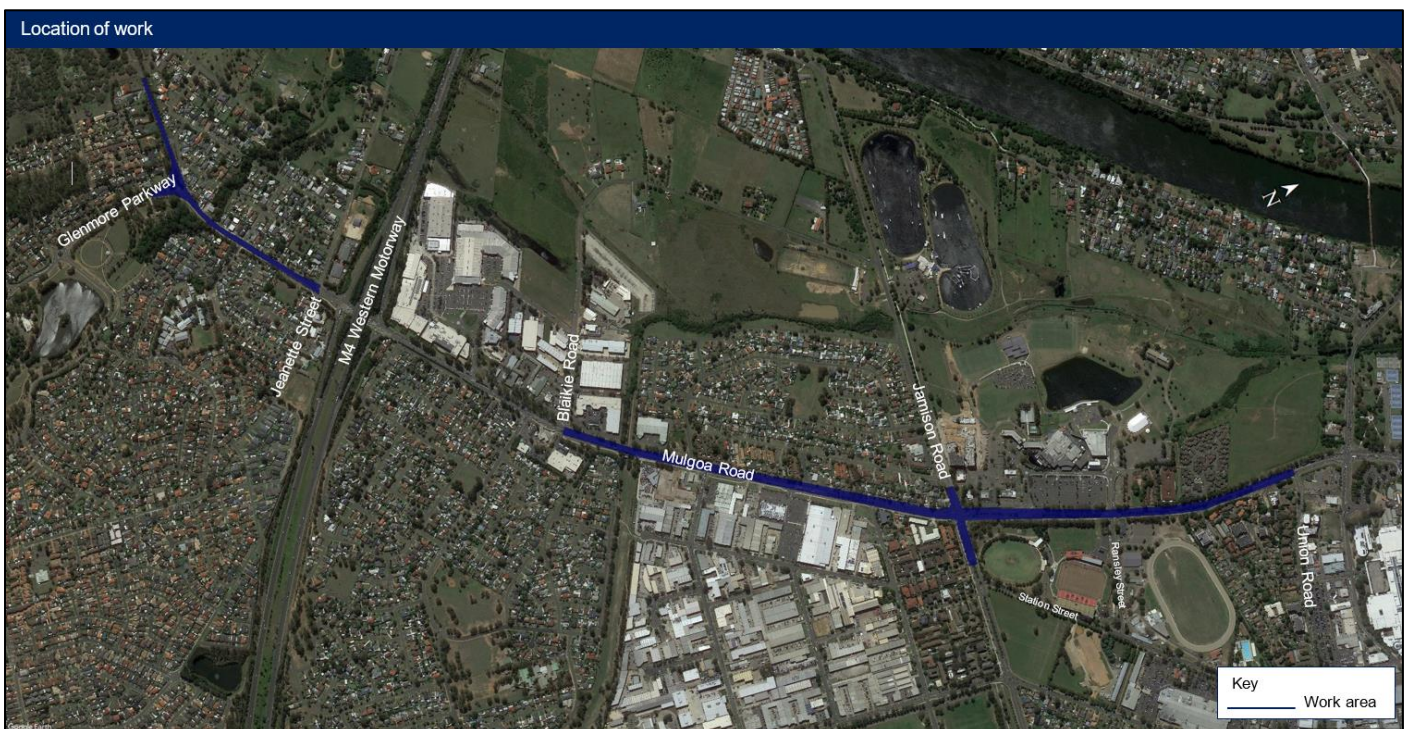
March 2021

Night investigation work continuing on Mulgoa Road, between Glenmore Parkway and Union Road from Wednesday 17 March 2021

The NSW Government is planning to widen and upgrade Mulgoa Road to support current and future traffic demands and expected growth in the area.

Transport for NSW will continue to carry out investigation work along the Mulgoa Road corridor, between Glenmore Parkway and Jeanette Street and between Blaikie Road and Union Road.

Our work will include surveys investigations and potholing to locate subsurface utilities. These studies will help inform the design of the future upgrades of Mulgoa Road.



Our work schedule

We will work for around **25** night shifts occasionally between 17 March 2021 and late April 2021 (weather permitting). No work will take place during the Easter public holidays.

Work at night will occur on some weekdays and weekend nights between **6pm** and **6am**.

Contact

If you have any questions or want to register for updates on this project, please contact the project team on 1800 733 084 or email mulgoaroadupgrade@transport.nsw.gov.au

For more information, visit www.rms.nsw.gov.au/mulgoaroadcastlereaghroad.

The work will include the following activities:

- low impact topographic surveys
- potholing to locate subsurface utilities.

The plant and machinery used will be an excavator, saw cutter, truck mounted drill rig, vacuum excavation truck and support vehicles.

How will the work affect you?

To minimise the impact on road users, we will need to carry out some of this work at night.

During night work, we will make every effort to minimise the impact of noisy work by turning off machinery when not in use, limiting noisy work to two consecutive nights per week and wherever possible, high noise generating work will be completed before 11pm. We will maintain access to properties and businesses. If we need to access your property, we will contact you in advance to discuss access arrangements.

Traffic changes

There may be temporary traffic changes during our work hours to ensure the work zone is safe. Lane closures will be in place and may affect travel times. Please keep to speed limits and follow signs and traffic controllers' directions. For the latest traffic updates, you can call 132 701, visit livetraffic.com or download the Live Traffic NSW App.



If you need help understanding this information, please contact the Translating and Interpreting Service on 131 450 and ask them to call us on 1800 733 084.