

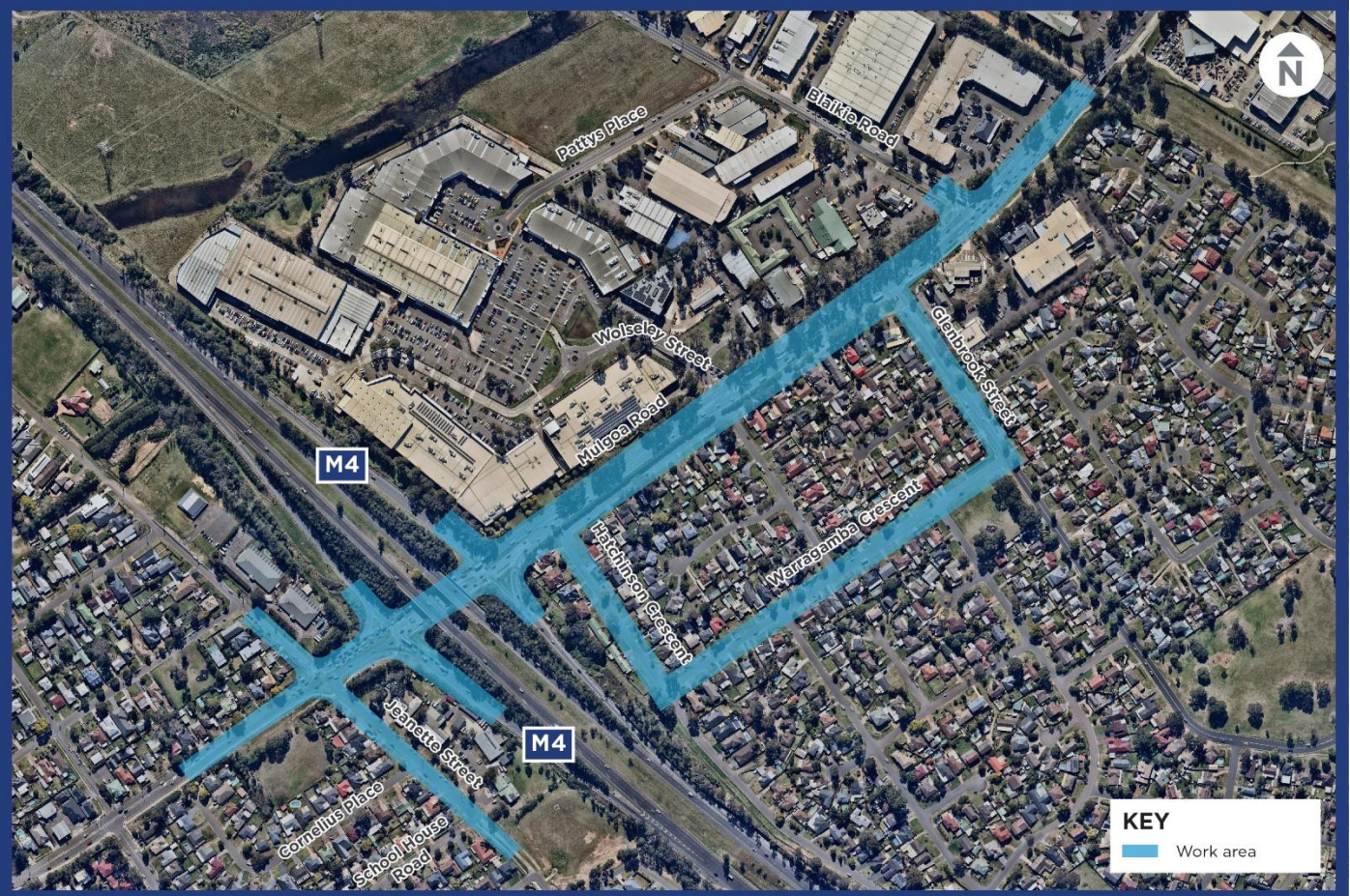


Investigation work continues on Mulgoa Road and M4 Motorway from Monday 27 September 2021

The Australian and NSW Governments are planning the upgrade of Mulgoa Road, Jamisontown between Jeanette Street and Blaikie Road including upgrading the M4 Motorway off ramps.

Transport for NSW will carry out day and night investigation work along Mulgoa Road, Jeanette Street, Factory Road, Hutchinson Crescent, Huron Place, Peter Court, Warragamba Crescent, Glenbrook Street, Blaikie Road and the M4 Motorway ramps. This work will help inform the detailed design of the upgrade.

Location of work



Our work schedule

We will work for around **15** night shifts and **20** day shifts between Monday 27 September 2021 to Friday 24 December 2021, weather permitting. No work will take place on public holidays.

Work during the day will occur on weekdays between **7am** and **6pm** and on Saturdays between **8am** and **1pm**. Work at night will occur Sunday to Thursday nights between **9pm** and **5am**.

Contact

If you have any questions, please contact the project team on 1800 733 084 or email mulgoaroadupgrade@transport.nsw.gov.au.

For more information on our projects, visit roads-waterways.transport.nsw.gov.au.

The work over this period will include pavement coring, excavation of test pits, survey, concrete cutting, pavement and footpath reinstatement and potholing to locate subsurface utilities.

The plant and machinery used will be a corer truck, small excavator, concrete saw, concrete truck, tipper, roller, jet blaster and sucker truck.

How will the work affect you?

This work may be noisy at times. We will make every effort to minimise the impact of noisy work by turning off machinery when not in use, limiting noisy work to two consecutive nights per week and wherever possible, high noise generating work like concrete cutting will be completed before 11pm.

We will provide further information about any work that could have particular noise impacts closer to the date.

Traffic changes

Temporary night-time single lane closures will be in place on Mulgoa Road and the M4 entry and exit ramps during the night work shifts. Traffic changes will be in place to ensure the work zone is safe for workers and motorists. Traffic control and a reduced speed limit of 40 km/h will be in place for the safety of workers and motorists.

For the latest traffic updates, you can call 132 701, visit livetraffic.com or download the Live Traffic NSW App. Thank you for your patience during this important work.



If you need help understanding this information, please contact the Translating and Interpreting Service on 131 450 and ask them to call us on 1800 733 084.