



Nelligen Bridge replacement

Concept design and environmental assessment

October 2016

Roads and Maritime Services is planning for a replacement of the Kings Highway Bridge over the Clyde River at Nelligen.

A new crossing would be built upstream of the existing bridge to ensure a safe and reliable crossing of the Clyde River at Nelligen and to improve safety and efficiency on the Kings Highway. Once the new bridge is open, the current Nelligen Bridge would be removed.

The concept design and environmental impact assessment for the proposal is now on display for your feedback until **Friday 18 November 2016**.

The proposal

During routine inspections, Roads and Maritime identified the supporting concrete pillars under Nelligen Bridge had deteriorated. The bridge can still safely carry normal traffic loads, however the pillars will need significant future maintenance or replacement.

The proposal for a replacement bridge was found to be the best option to ensure a safe and reliable crossing of the Clyde River on the Kings Highway without speed or weight restrictions.

The proposal also improves the tight curve on the eastern side of the current bridge and provides safer pedestrian facilities.

A map of the concept design for the proposal is over the page.

Environmental assessment documents on display

The environmental assessment documents contain specialist studies and investigations about biodiversity, heritage, visual impact, noise and vibration and water quality and hydrology. Copies of the assessment documents are available to view or download from the project website rms.nsw.gov.au/nelligen.

Hard copies are also available at Eurobodalla Shire Council office in Moruya and the Batemans Bay Public Library.

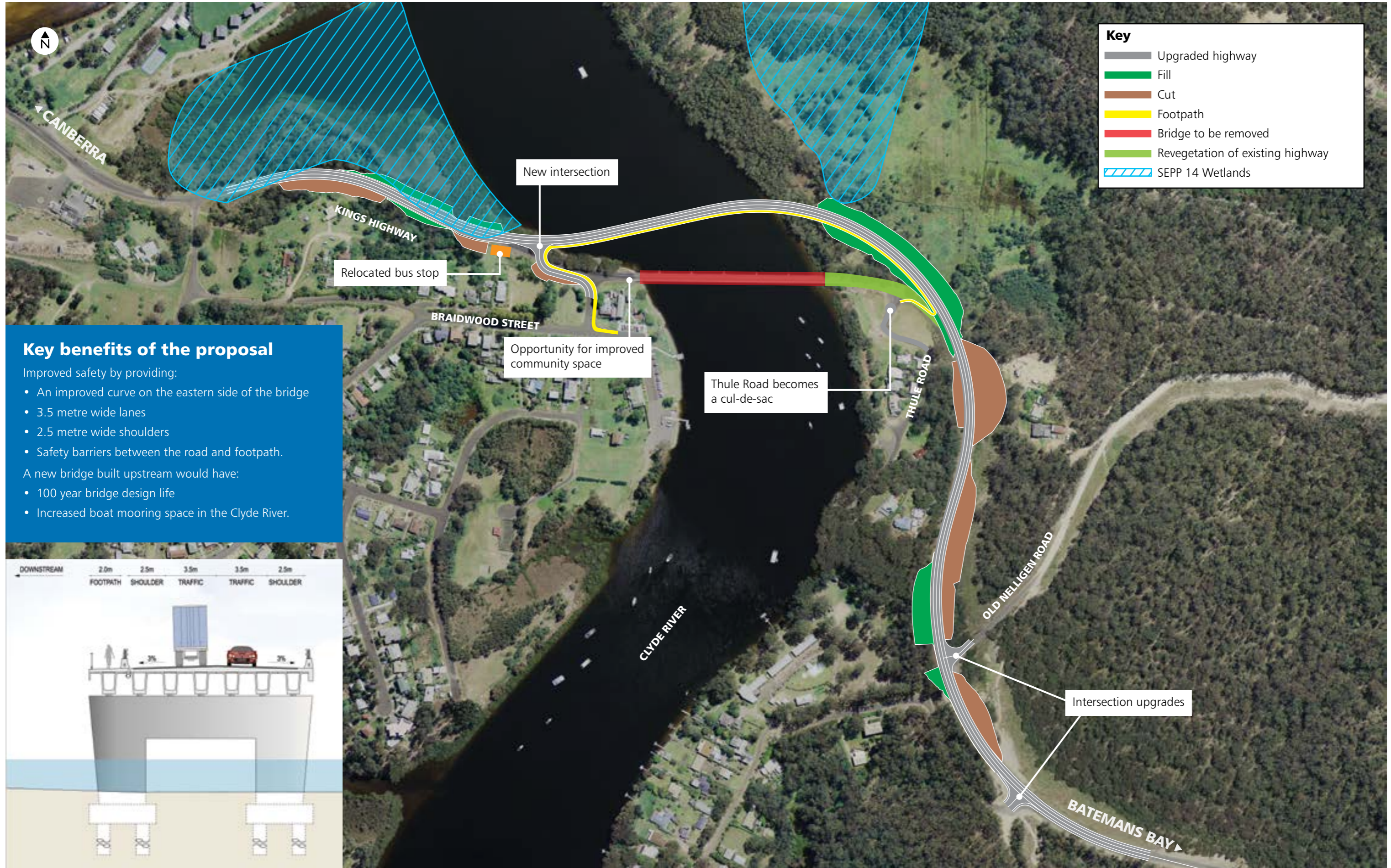
We will be holding two information sessions at the **Nelligen Mechanics Institute**:

Wednesday 26 October: 4pm – 7pm

Thursday 27 October: 10am – 1pm

You are invited to drop in at any time to discuss the proposal with members of the project team.

Concept design



How to submit feedback

Feedback on the concept design and environmental impact assessment documents is invited until **Friday 18 November 2016** and will be used to further develop the proposal.

All submissions made during the display period will be addressed by Roads and Maritime with responses published in a submissions report.

Review of Environmental Factors

The review of environmental factors assesses the potential environmental impacts of the proposal and identifies ways to manage and mitigate these impacts.

Written submissions should be sent to Roads and Maritime and can be emailed or mailed to:

Email: southernprojects@rms.nsw.gov.au

Mail: Nelligen Bridge replacement,
Roads and Maritime Services,
PO Box 477,
Wollongong NSW 2500

Environmental Impact Statement

The environmental impact statement assesses the potential environmental impacts of the proposal specifically on the SEPP 14 wetlands located within the project site.

Written submissions should be sent to Eurobodalla Shire Council and can be emailed or mailed to:

Email: council@eurocoast.nsw.gov.au

Mail: The General Manager
Eurobodalla Shire Council
PO Box 99
Moruya NSW 2537



View of the current bridge from the east



View of the proposed bridge from the east



View of the current bridge from the western foreshore



View of the proposed bridge from the western foreshore



October 2016
RMS 16.486



Privacy Roads and Maritime Services ("RMS") is subject to the Privacy and Personal Information Protection Act 1998 ("PIIP Act") which requires that we comply with the Information Privacy Principles set out in the PIIP Act. All information in correspondence is collected for the sole purpose of delivering this project. The information received, including names and addresses of respondents, may be published in subsequent documents unless a clear indication is given in the correspondence that all or part of that information is not to be published. Otherwise RMS will only disclose your personal information, without your consent, if authorised by the law. Your personal information will be held by RMS at 90 Crown Street, Wollongong NSW 2500. You have the right to access and correct the information if you believe that it is incorrect.