

Nelligen Bridge Replacement – Out of hours work from Saturday 18 September

The NSW Government is funding this \$148 million project which will provide a new bridge over the Clyde River and upgrades to the Kings Highway at Nelligen.

What are we doing?

We will be installing a precast pile cap shell over pier 8 in the Clyde River at the western end of the new bridge.

The precast pile cap shell is fabricated offsite and transported at night under an overmass permit. Once on site, it will be loaded from the temporary jetty onto a barge that will be pushed and positioned next to the pier location using a tugboat. The pile cap shell will be lifted into place over the pier using a 400 tonne crane that is mounted on another barge.

When are we working?

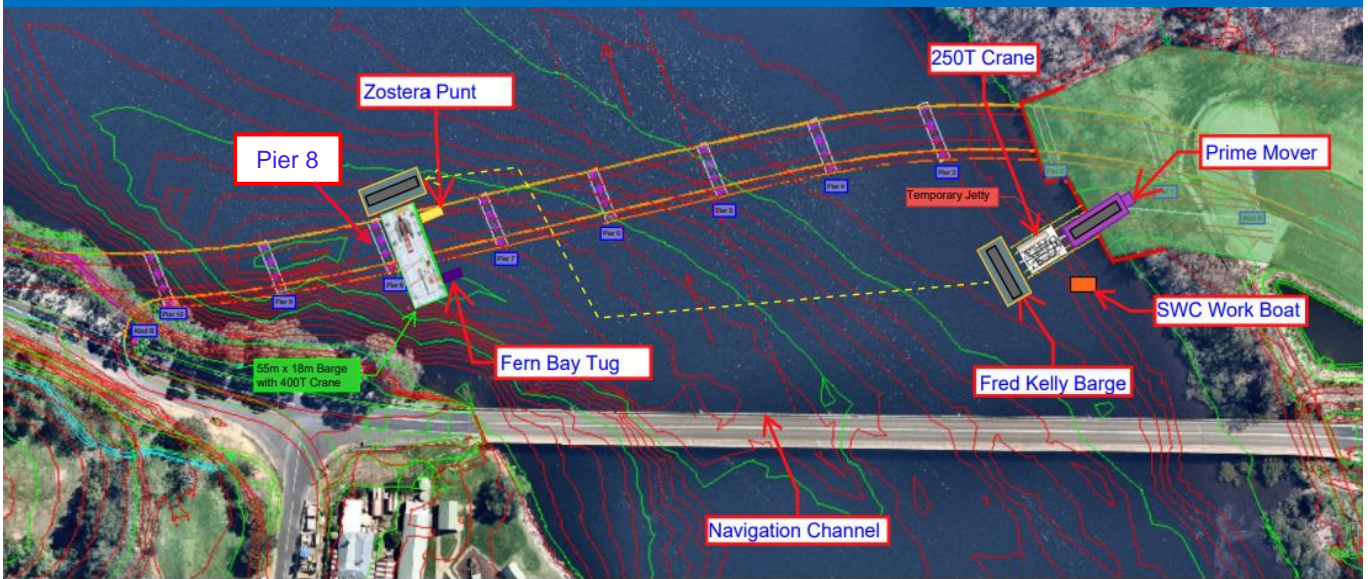
Due to the complexity of what is involved with installing the pile cap shell over the pier, we will be extending our working hours from **Saturday 18 September to Monday 20 September between 6am and 10pm**, weather permitting.

How will the work affect you?

During this work we will be using machinery and equipment that generate light, noise and vibration. We will make every effort to minimise disruption by:

- turning off machinery and vehicles when not in use
- using noise shields, if required
- directing temporary lighting down and away from homes where safe to do so
- planning activities close to residents within standard construction hours and scheduling noisy activities earlier in the night, where possible
- fitting equipment with devices to minimise noise including reversing squawkers rather than beepers
- regularly monitoring noise so we can manage any potential impacts and adjust our work, where possible.

Location of work for pier 8



Contact us

- ☎ 1800 334 541
- @ nelligenbridge@seymourwhyte.com.au
- 🖱 nswroads.work/NelligenBridge



If you need help understanding this information, please contact the Translating and Interpreting Service on 131 450 and ask them to call us on 1800 334 541.