

## Temporary closure of the Golden Highway for night work on the New England Highway upgrade from Tuesday 26 April

The NSW Government is investing \$97 million for the upgrade between Belford and the Golden Highway to improve traffic flow, travel times and safety for motorists.

Transport for NSW has engaged ACCIONA to deliver the upgrade. Night work will be carried out and includes installing drainage pipes across the Golden Highway, near the New England Highway intersection.

We will be working at night between **6pm** and **7am**, from **Tuesday 26 April** to **Friday 29 April** and expect to complete the work in **four night shifts**, weather permitting.

### Traffic changes

**This work requires a temporary night closure of the Golden Highway from Tuesday 26 April to Friday 29 April. A detour will be in place from 6pm each night to 5am the following morning.**

Motorists will be detoured via Range Road and the New England Highway. We have included a map to show the alternate route.

Motorists are advised to plan ahead as the detour is expected to add up to 10 minutes of extra travel time.

There will be limited access to the Golden Highway between Range Road and the New England Highway. Residents will need to use the detour and traffic controllers will provide access to the highway at the Range Road intersection. Access for emergency vehicles only will be maintained through the work area.

Please keep to speed limits and follow the direction of traffic controllers and signs. For the latest traffic updates, you can call 132 701, visit [livetraffic.com](http://livetraffic.com) or download the Live Traffic NSW App.

### How will the work affect you?

The work will involve the use of machinery which produces some noise. We will make every effort to minimise noise by completing noisier activities earlier in the night and turning off machinery and vehicles when they are not in use. During the temporary closure, residents along the detour route may experience an increase in traffic noise.

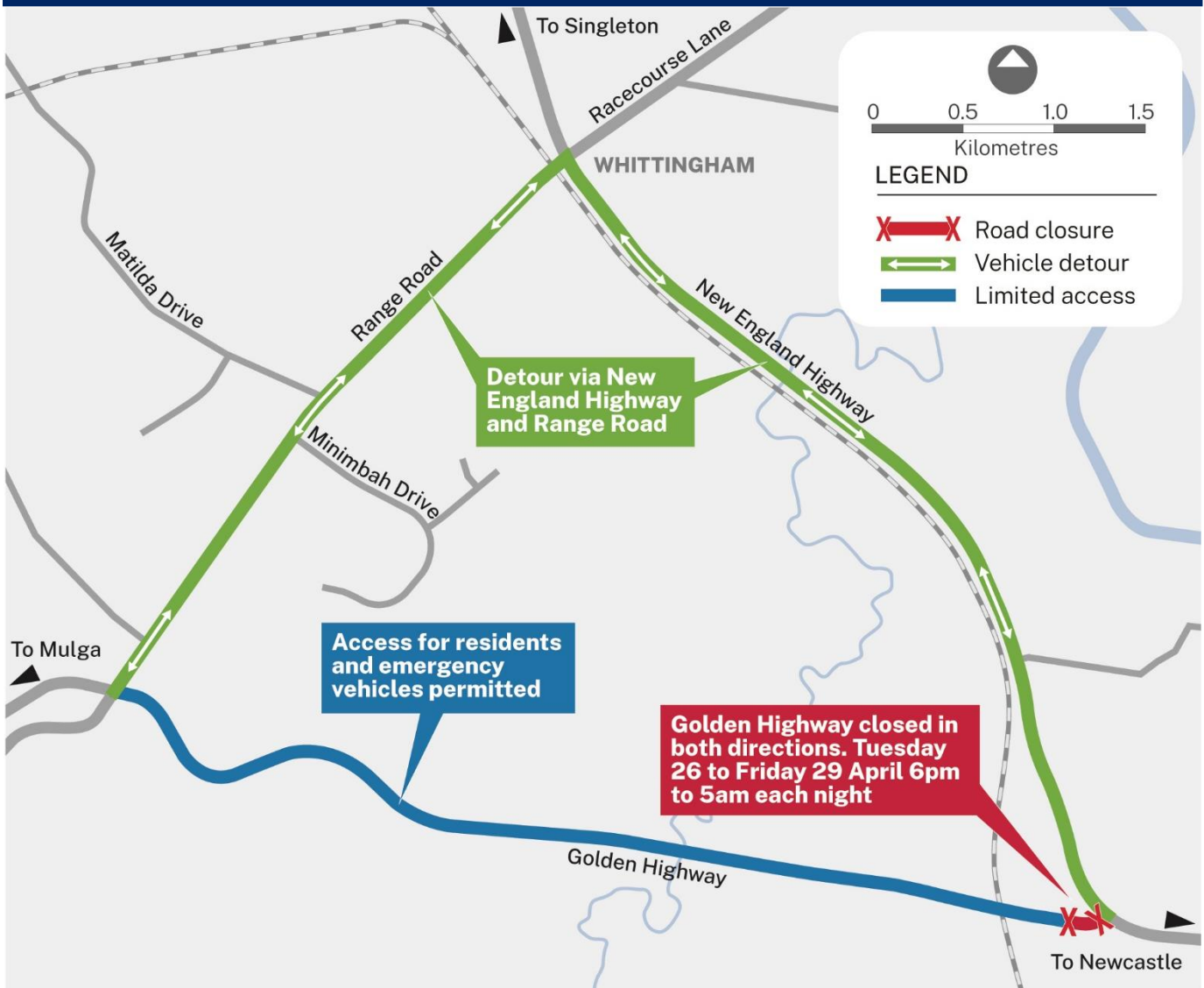
### Contact

If you have any questions, please contact the project team on the toll-free project line on 1800 945 202 or via email at [info.B2GH@acciona.com](mailto:info.B2GH@acciona.com).

For more information on our projects, visit [nswroads.work/B2G](http://nswroads.work/B2G)

Thank you for your patience during this important work.

## Detours for nightwork on the Golden Highway



If you need help understanding this information, please contact the Translating and Interpreting Service on 131 450 and ask them to call us on 1800 945 202.