

# New England Highway upgrade between Belford and the Golden Highway

Project update | September 2019



Artistic impression of the upgraded New England Highway and Golden Highway intersection

The NSW Government is providing \$85 million under the Rebuilding NSW Plan to upgrade the New England Highway between Belford and the Golden Highway to improve traffic flow, travel times and safety for motorists.

Roads and Maritime Services is progressing work on the upgrade, which would provide two travel lanes in each direction on the New England Highway and a flyover for vehicles turning right from the Golden Highway.

Work on the detailed design is moving forward and is expected to be completed in late 2019.

We have considered the previous stages of community consultation and the outcomes of additional investigations to make some changes to the project design.

## Design changes

### Roundabout on the Golden Highway

A roundabout would be built on the Golden Highway with a connection for motorists travelling to Singleton.

The roundabout would also make accessing the highway safer for vehicles entering and exiting from adjoining properties.



Save travel time

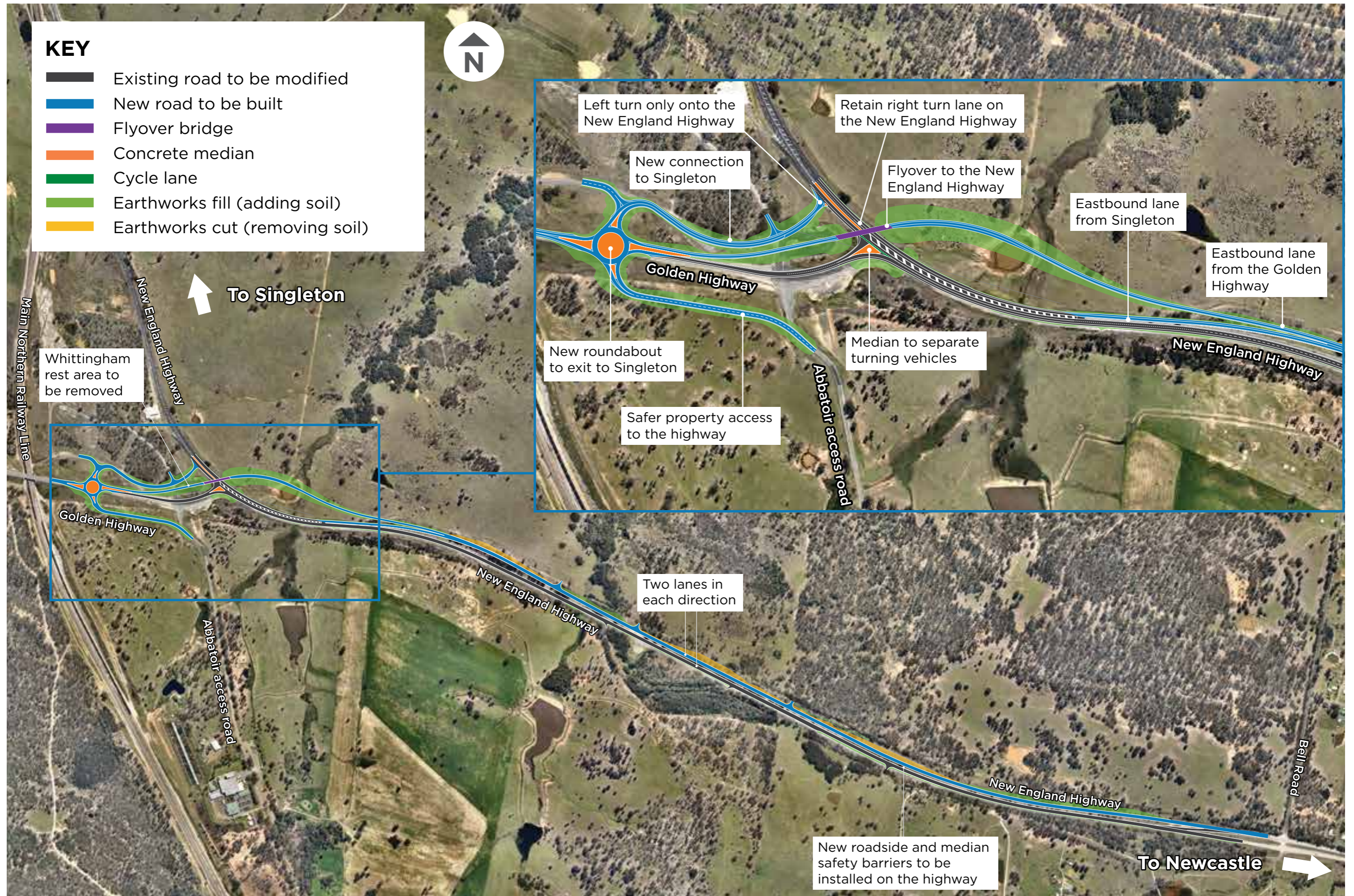


Improving  
traffic flow



Improving  
safety

# New England Highway upgrade between Belford and the Golden Highway





Artistic impression of the new roundabout on the Golden Highway

## Access to Singleton

A new connection from the roundabout would provide a safer entry point for motorists turning left onto the New England Highway towards Singleton. The connection would be separated from the highway intersection which reduces conflicting turning movements. The connection is more logically located to the left of the flyover entrance which helps to improve road user decision making.

## Rest area closure

The Whittingham rest area will be permanently closing on **1 February 2020** as part of early work for the upgrade.

The Whittingham rest area adjacent to the New England Highway and Golden Highway intersection is being removed to allow work to start on the upgrade.

The nearby townships of Singleton and Branxton offer motorists an alternate place to stop with a range of amenities. Alternative rest areas are located:

- about 15 kilometres north on the New England Highway at Rixs Creek Road, north of Singleton
- about 10 kilometres south on the Hunter Expressway at Branxton (heavy vehicles only)
- about 40 kilometres south on the Hunter Expressway at Buchanan.




For information about nearby rest area locations and facilities please visit [rms.nsw.gov.au/restareas](http://rms.nsw.gov.au/restareas).

## Next steps

We are currently planning to invite construction tenders to build the upgrade in the first half of 2020. The community will be notified when this next step takes place.

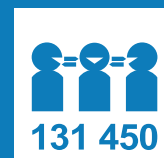
Early work on the upgrade, including utility relocations, is expected to start in 2020. We will notify the community of timing for main construction work when it has been confirmed.

## Contact details

-  Locked Bag 2030, Newcastle NSW 2300
-  1800 945 202
-  [BelfordtoGoldenHighway@rms.nsw.gov.au](mailto:BelfordtoGoldenHighway@rms.nsw.gov.au)

More information is available at:

-  [rms.work/B2G](http://rms.work/B2G)



If you need help understanding this information, please contact the Translating and Interpreting Service on 131 450 and ask them to call us on 1800 945 202.