

Temporary closure of the New England Highway for night work from Monday 10 October

The NSW Government is investing \$97 million for the upgrade of the New England Highway between Belford and the Golden Highway to improve traffic flow, travel times and safety for motorists.

Transport for NSW has engaged ACCIONA to deliver the upgrade. Work is continuing on the new overpass bridge across the New England Highway, with the next stage of night work required to install a safety barrier.

We will be working at night between **7pm** and **5am** from **Monday 10 October** to **Friday 14 October** and expect to complete the work in **four night shifts**, weather permitting. In the event of wet weather, the night work will take place between 7pm and 5am from Monday 17 October to Friday 21 October.

Traffic changes

This work requires a temporary night closure of the New England Highway 7pm and 5am from Monday 10 October to 5am Friday 14 October. A detour will be in place during the closure.

Motorists will be detoured via Range Road and the Golden Highway. We have included a map to show the alternate route. Motorists are advised to plan ahead as the detour is expected to add up to 10 minutes of extra travel time.

There will be limited access to the New England Highway between Range Road and the Golden Highway. Residents will need to use the detour and traffic controllers will provide local access to the highway at the Range Road intersection. Access for emergency vehicles only will be maintained through the work area.

Please keep to speed limits and follow the direction of traffic controllers and signs. For the latest traffic updates, you can call 132 701, visit livetraffic.com or download the Live Traffic NSW App.

How will the work affect you?

The work will involve the use of machinery which produces some noise. We will make every effort to minimise noise by completing noisier activities earlier in the night and turning off machinery and vehicles when they are not in use. During the temporary closure, residents along the detour route may experience an increase in traffic noise.

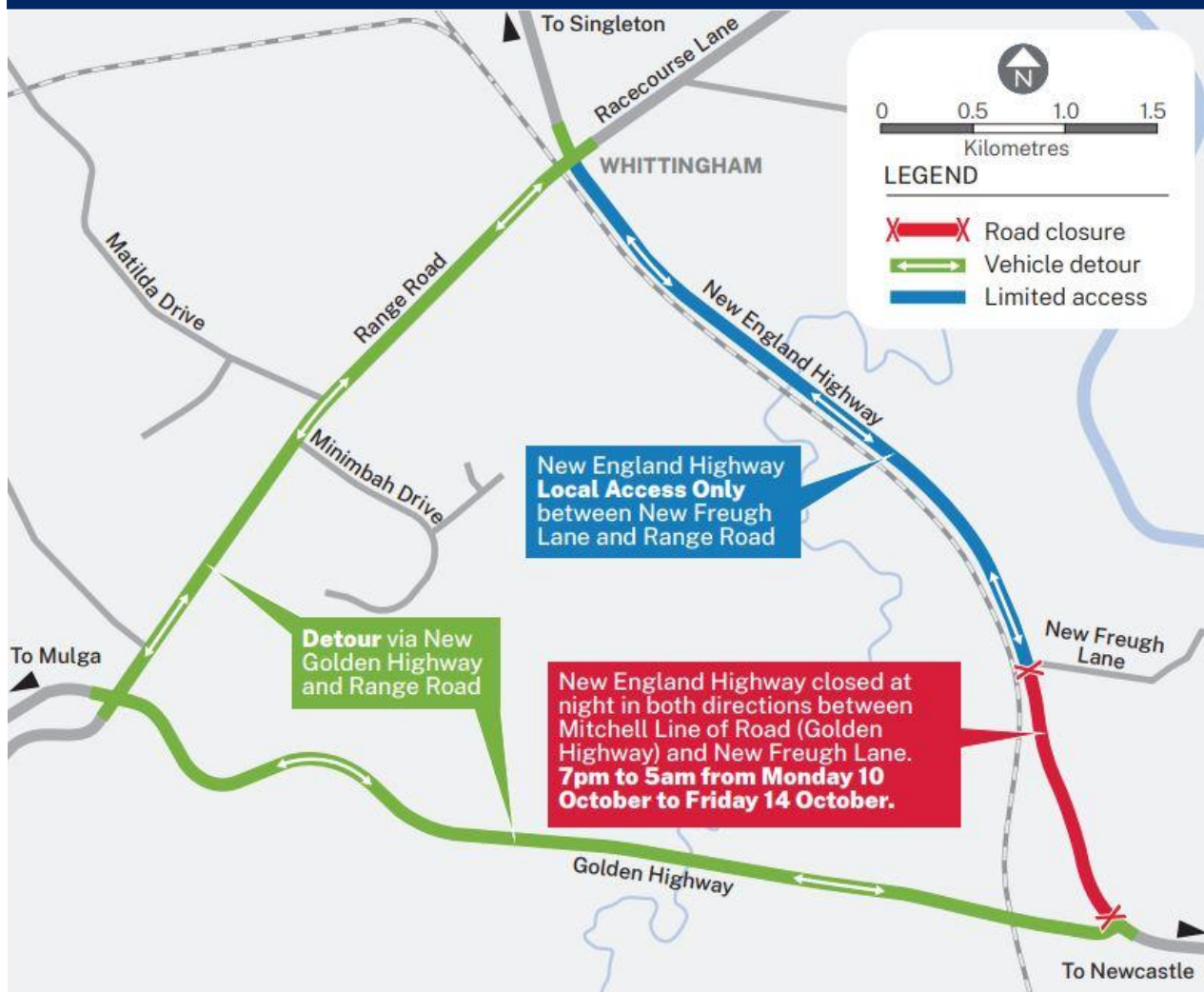
Contact

If you have any questions, please contact the project team on the toll-free project line on 1800 945 202 or via email at info.B2GH@acciona.com.

For more information on our projects, visit nswroads.work/B2G.

Thank you for your patience during this important work.

Detours for night work on the New England Highway



If you need help understanding this information, please contact the Translating and Interpreting Service on 131 450 and ask them to call us on 1800 945 202.