

Transport for NSW

# New England Highway safety improvements at Kootingal



The New England Highway at Kootingal looking south

**As part of the NSW Government's Saving Lives on Country Roads program we are proposing a number of road safety improvements between Sandy Road and Braefarm Road, Kootingal.**

The NSW Government has provided \$50 million for important safety improvements on the New England Highway between Uralla and Willow Tree as part of the Saving Lives on Country Roads program. The program has been developed to help address the disproportionate number of people dying on country roads.

The New England Highway between Sandy Road and Braefarm Road is considered a high risk area due to the large number of intersections in the 100 km/h speed zone. We know vehicles entering and exiting high speed zones are at greater risk of being involved in crashes. When travelling at 100 km/h it takes about 100 metres to stop a car in dry conditions.

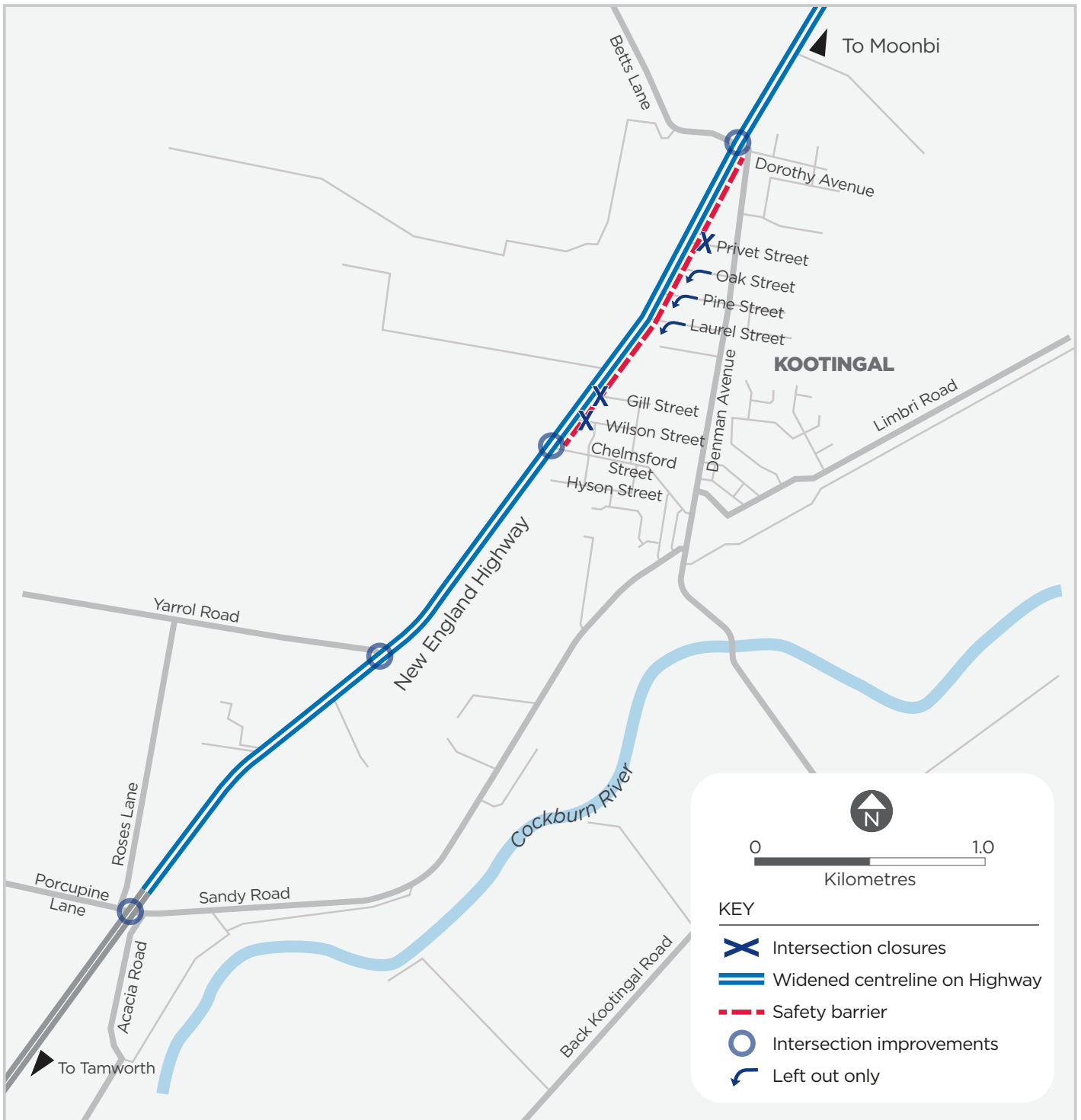
We have been investigating options to improve road safety on this section of the New England Highway.

## Proposed safety improvements

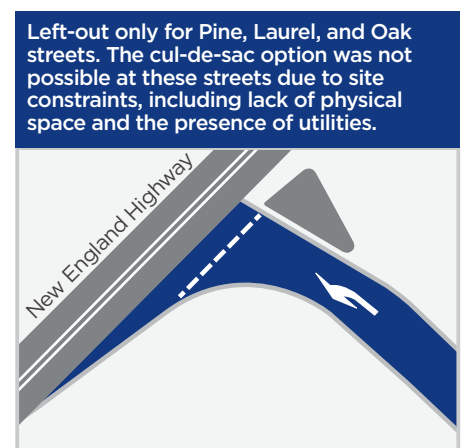
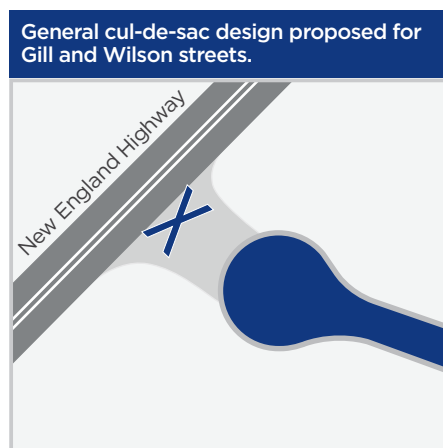
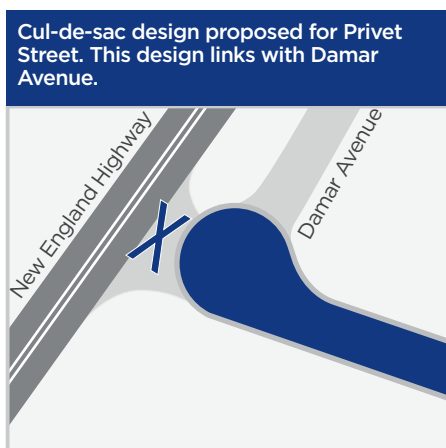
To make this section of highway safer we are proposing to:

- Close intersections with the highway at Wilson, Gill and Privet streets to separate local traffic from through traffic on the highway
- Restrict access to the highway from Laurel, Oak and Pine streets to left-out only
- Make improvements to Dorothy Avenue/Betts Lane, Chelmsford Street, Yarrol Road and Sandy Road intersections
- Rebuild and widen the road
- Install widened centre line on the highway to increase the separation of vehicles
- Remove a number of roadside trees to reduce the risk of impact during a crash and improve visibility at intersections
- Install roadside guardrail to reduce the risk of a vehicle hitting an object when leaving the road.

## Proposed safety improvements

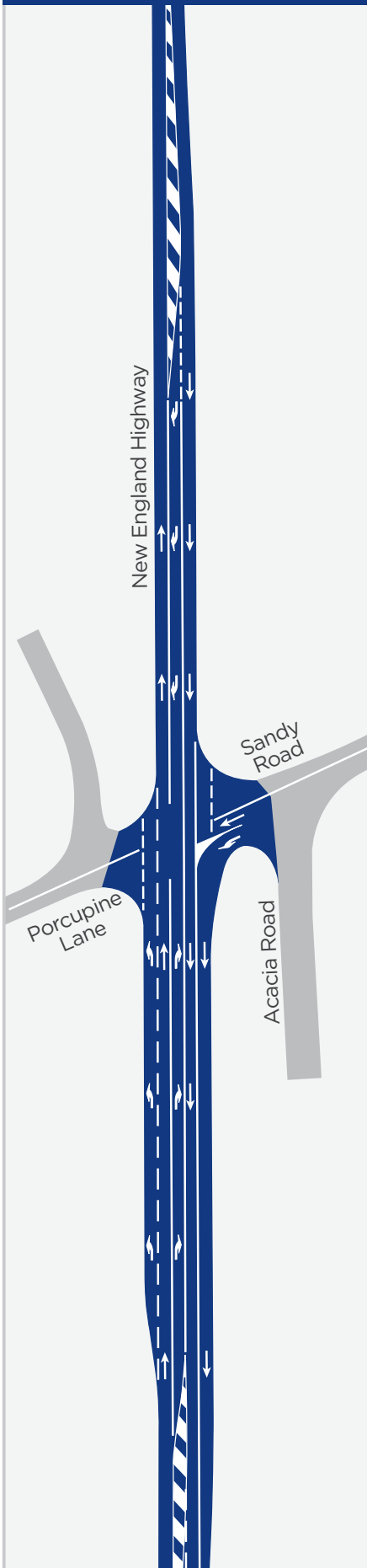


## Proposed intersection closures

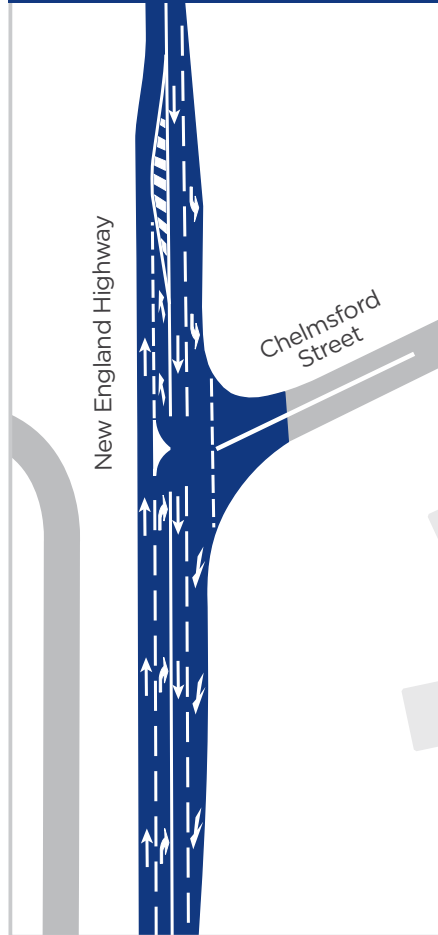


## Proposed intersection improvements

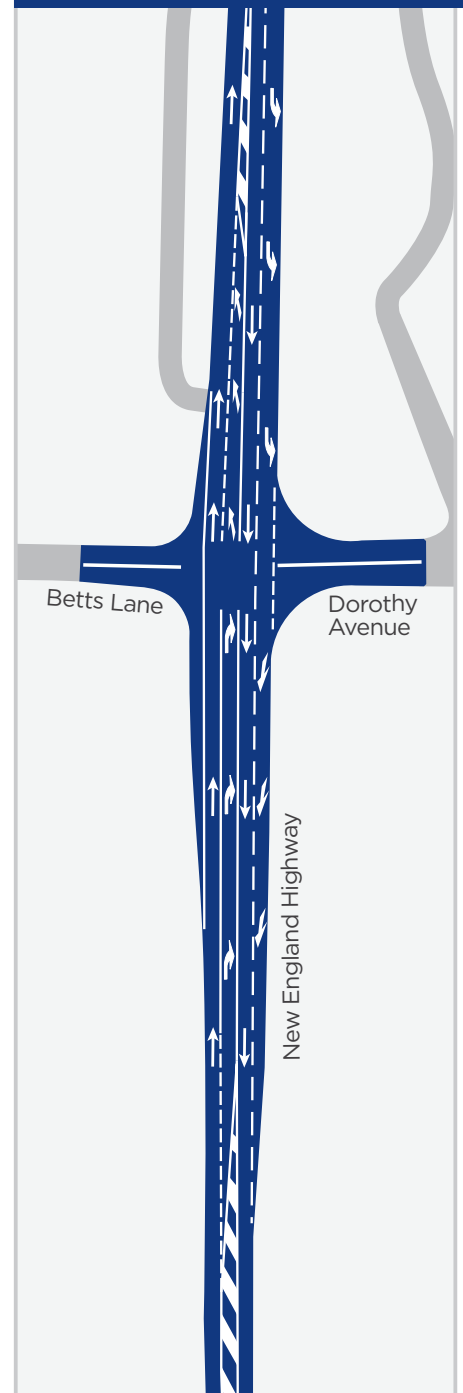
**Sandy Road:** A new southbound acceleration lane out of Sandy Road. Linemarking improvements to improve visibility when turning right into Sandy Road and right into Porcupine Lane.



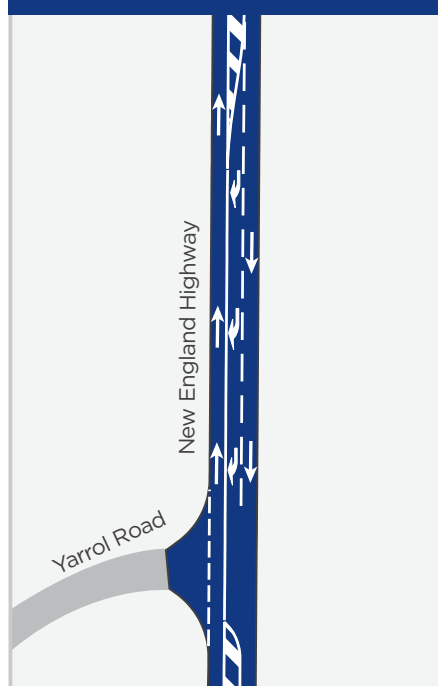
**Chelmsford Street:** Install new acceleration lane for motorists turning right out of Chelmsford Street traveling northbound. Improved deceleration lane for motorist traveling southbound turning left into Chelmsford Street. Lengthen the right turn bay into Chelmsford Street to better define the turning lane prior to the crest of the hill.



**Betts Lane and Dorothy Avenue:** Vegetation cleared to improve sight distance. Widened sealed shoulders. New northbound acceleration lane out of Dorothy Avenue to replace existing right turn into Betts Lane. Retain left turn lane into Dorothy Avenue. Improvements to line-marking and signage



**Yarrol Road:** The intersection will be upgraded to provide a right turn lane from the highway into Yarrol Road for southbound motorists.

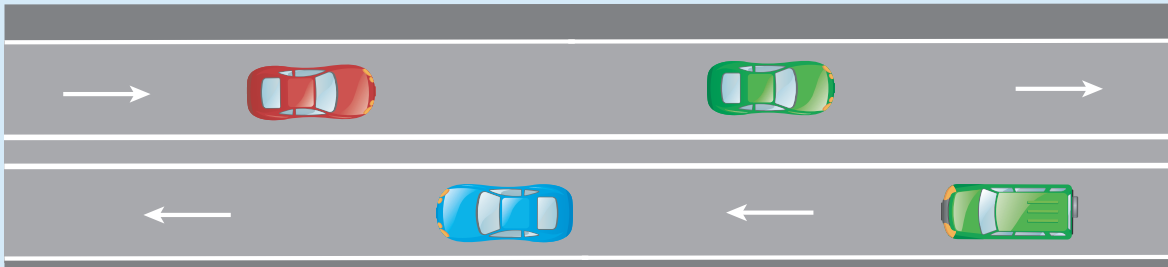


## Wide centreline treatment

Traditional centreline marking provides limited recovery time for drivers who cross the centreline. A wider centreline provides a greater opportunity for motorists to avoid head-on crashes.

The key benefits of a wider centreline include:

- Providing greater distance for drivers to recover if crossing into the opposing traffic lane
- Increased response time, which allows motorists to slow down, recover or reduce the severity of the crash.



Indicative representation of wide centreline treatment


## Have your say

Last year we started consulting Tamworth Regional Council and Kootingal residents living in the streets where we are proposing to restrict access to the New England Highway. Since then we have further refined our proposal and we are now seeking feedback from the broader Kootingal community. The community is invited to provide feedback on the proposed safety improvements until 5pm on **Wednesday 14 October**. We would like to hear all feedback about the proposal, including the parts you support.

You can make a submission in one of the following ways:

 Filling out the digital survey at <https://yoursay.transport.nsw.gov.au/kootingal>

 [grafton.regional.office@transport.nsw.gov.au](mailto:grafton.regional.office@transport.nsw.gov.au)

 New England Highway safety work  
PO Box 576,  
Grafton, NSW 2460

## Contact us:

If you have any questions or would like to register your interest in the project, please contact us by:

 (02) 6640 1331

 <https://www.rms.nsw.gov.au/projects/new-england-highway/new-england-highway-safety-upgrade.html>

 **Improvements to intersections**

 **Improved linemarking**

 **improve safety and reduce the severity of crashes**



This document contains important information about Transport projects in your area. If you require the services of an interpreter, please contact the Translating and Interpreting Service on 131 450 and ask them to call Transport Projects on 1800 549 159. The interpreter will then assist you with translation.