

Road work on the New England Highway, south of Uralla from Monday 12 September

The NSW Government is investing \$5.5 million in safety upgrades on a 4.2 km section of the New England Highway, about 2 km south of Uralla to provide a safer and smoother journey for motorists.

Transport for NSW will carry out the work, which includes the installation of new safety barriers, shoulder widening and wide centreline treatment. We have included a map to show the location of the project.

We will be working between **6am** and **6pm weekdays** and **Saturdays**. We expect to complete the work by **April 2023**, weather permitting. We will let you know in advance if we need to do any work outside these times.

How will the work affect you?

The work will involve the use of machinery which generates some noise. We will make every effort to minimise noise by turning off machinery and vehicles when not in use.

Traffic changes

There will be some temporary traffic changes to ensure the work zone is safe.

Traffic control, single lane closures with alternating flow and a reduced speed limit of 40km/h will be in place during work hours, which may affect travel times.

Please keep to speed limits and follow the direction of traffic controllers and signs. For the latest traffic updates, you can call 132 701, visit livetraffic.com or download the Live Traffic NSW App.

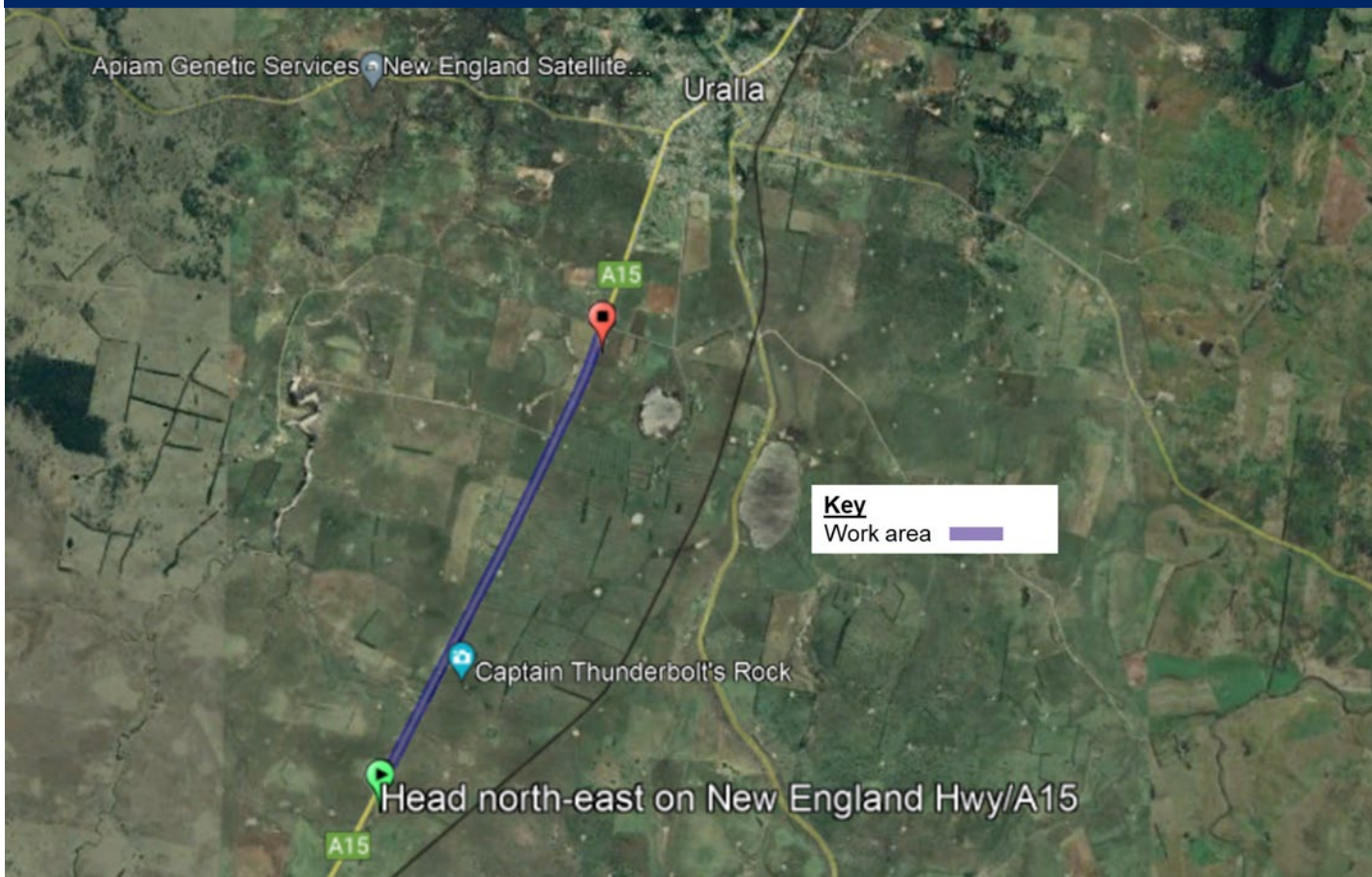
Contact

If you have any questions, please contact our Senior Project Engineer, Ngoni Zvarevashe on 1800 161 132 or Ngoni.Zvarevashe@transport.nsw.gov.au

For more information on our projects, visit roads-waterways.transport.nsw.gov.au

Thank you for your patience during this important work.

Road work on the New England Highway, south of Uralla



If you need help understanding this information, please contact the Translating and Interpreting Service on 131 450 and ask them to call us on 1800 161 132