

Out of hours early work at New Lambton Heights from February to April 2022

The NSW Government is funding early work for the Newcastle Inner City Bypass between Rankin Park and Jesmond.

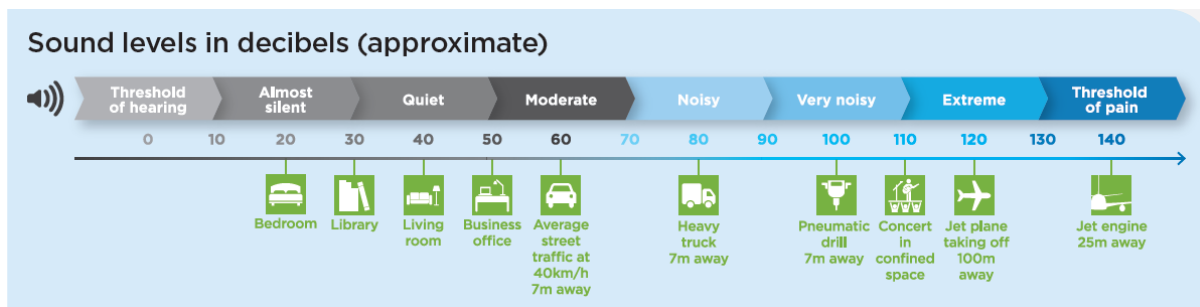
Early work to relocate major utilities at the southern end of the Rankin Park to Jesmond project will be continuing from February 2022 to April 2022. We will be carrying out essential night work on Lookout Road, McCaffrey Drive and surrounding areas. Work is required outside normal project hours for the safety of workers and road users, and to minimise traffic delays. Work hours will be between **7pm** and **6am**, **Monday** to **Friday**, weather permitting. High impact noisy work will be done **before 11pm**.

Date	Work Activity	Equipment
Late February	Water main work on McCaffrey Drive Expected duration – seven shifts over nine nights	Traffic control, excavators, trucks, lighting towers, compaction rollers, road saw
Late February	Telstra conduit installation on Lookout Road at intersection with McCaffrey Drive Expected duration – two consecutive shifts	Traffic control, excavator, trucks, lighting towers
March	Overhead powerline work on McCaffrey Drive and Lookout Road Expected duration – two consecutive shifts	Traffic control, trucks, elevated working platforms, lighting towers
March	Telstra conduit and pit installation on Lookout Road Expected duration – five consecutive shifts	Traffic control, excavator, trucks, lighting towers
March	Asphalting, linemarking, and water main work on Lookout Road and McCaffrey Drive Expected duration – five consecutive shifts	Traffic control, excavators, trucks, lighting towers, compaction rollers, road saw, asphalt profiler, asphalt paver, concrete agitator trucks
March	Water main work on Lookout Road Expected duration – three consecutive shifts	Traffic control, excavators, trucks, lighting towers, compaction rollers
April	Concrete footpath restoration works on Lookout Road and McCaffrey Drive Expected duration – three consecutive shifts	Traffic control, excavators, trucks, lighting towers

How will the work affect you?

The work will involve the use of machinery which generates noise, light and vibration. We will make every effort to minimise these impacts with our equipment selection, positioning of machines and noise blankets, turning off vehicles when not in use and using non-tonal reversing alarms. Appropriate respite periods for the night work will be provided in consultation with the community at each affected location.

Noise levels will vary between moderate to noisy, the diagram below provides a guide to the noise you can expect. Directly affected residents will be contacted and advised of the likely impact and what we are doing to minimise disruption during the work.



Traffic changes

There will be temporary traffic changes to ensure the work zone is safe including lane closures on Lookout Road and McCaffrey Drive. A 40km/h speed limit will apply during the temporary lane closures. Travel times will be affected.

Please keep to speed limits and follow the direction of traffic controllers and signs. For the latest traffic updates, you can call 132 701, visit livetraffic.com or download the Live Traffic NSW App.

Contact

If you would like to provide feedback, or have any questions about this work, please contact our project team on 1800 818 433 (24 hours – select option 2) or email southern.utilities.RP2J@quickway.com.au. For more information about the Newcastle Inner City Bypass between Rankin Park and Jesmond, visit nswroads.work/rp2j. Thank you for your patience during this important work.

Location of work

