

## Out of hours work at New Lambton Heights in June 2021

The NSW Government is funding early work for the Newcastle Inner City Bypass between Rankin Park and Jesmond.

Transport for NSW will start the next stage of early work on the Newcastle Inner City Bypass involving the relocation of existing utilities at New Lambton Heights in preparation for main work.

### What are we doing?

We will be carrying out essential night work on Lookout Road and surrounding areas. We have included a map to show the location of the work.

Work is required outside normal project hours for the safety of workers and road users, and to minimise traffic delays.

We will be working between **7pm** and **6am** on and near Lookout Road, weather permitting. If wet weather prevents the work occurring as planned, it will be rescheduled and you will be notified in advance.

A contractor to carry out the work will soon be appointed and a more detailed schedule will be provided closer to the start of the early work.

Date	Work activity	Equipment
From June 2021	Installing traffic barriers Installing erosion and sediment controls Investigating service and utility locations Demolishing the median, removing on-street parking and shifting travelling lanes to the west from north of Grandview Road to McCaffrey Drive.	Excavators, trucks, sucker trucks, light vehicles, lighting towers, road profiler, asphalt paver and traffic control.

### How will the work affect you?

The work will involve the use of machinery which generates some noise. We will make every effort to minimise noise where possible and turn off vehicles when not in use.

Directly affected residents will be contacted and advised of the likely impact and what we are doing to minimise disruption during the work.

### Traffic changes

There will be some temporary traffic changes to ensure the work zone is safe. Partial lane closures and a reduced 40km/h speed limit will be in place. About 10 to 15 on-street parking spaces will be removed on Lookout Road southbound. Travel times may be affected by up to five minutes.

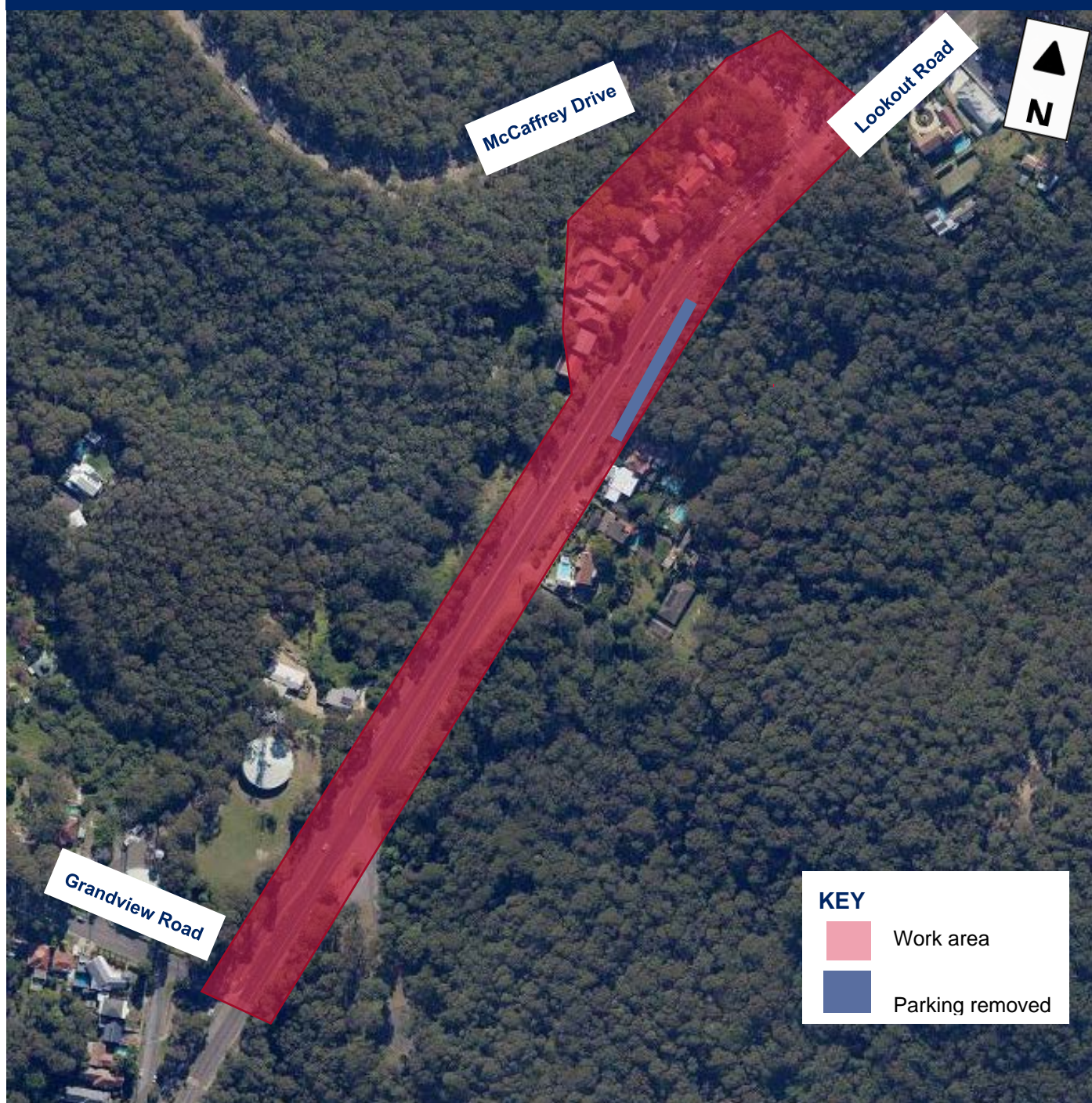
Please keep to speed limits and follow the direction of traffic controllers and signs. For the latest traffic updates, you can call 132 701, visit [livetraffic.com](http://livetraffic.com) or download the Live Traffic NSW App.

## Contact

If you would like to provide feedback, or have any questions about this work, please contact our project team on 1800 818 433 (24 hours) or email [rp2j.community@aurecongroup.com](mailto:rp2j.community@aurecongroup.com).

For more information about the Newcastle Inner City Bypass between Rankin Park and Jesmond, visit [nswroads.work/rp2j](http://nswroads.work/rp2j). Thank you for your patience during this important work.

### Location of work at New Lambton Heights



If you need help understanding this information, please contact the Translating and Interpreting Service on 131 450 and ask them to call us on 1800 818 433.