

Out of hours early work at New Lambton Heights from July to November 2021

The NSW Government is funding early work for the Newcastle Inner City Bypass between Rankin Park and Jesmond.

Transport for NSW recently awarded a contract to Quickway to relocate major utilities at the southern end of the Rankin Park to Jesmond project to help prepare for the main construction of the bypass. This early work is due to start in late July.

We will be carrying out essential night work on Lookout Road and surrounding areas. Work is required outside normal project hours for the safety of workers and road users, and to minimise traffic delays.

To reduce disruptions, work will be limited to two nights per week at the same location. Work hours will be **7pm** and **6am** between **Monday** and **Friday**, weather permitting. High impact noisy work will be done **before 11pm**. If wet weather prevents the work occurring as planned it will be rescheduled and you will be notified.

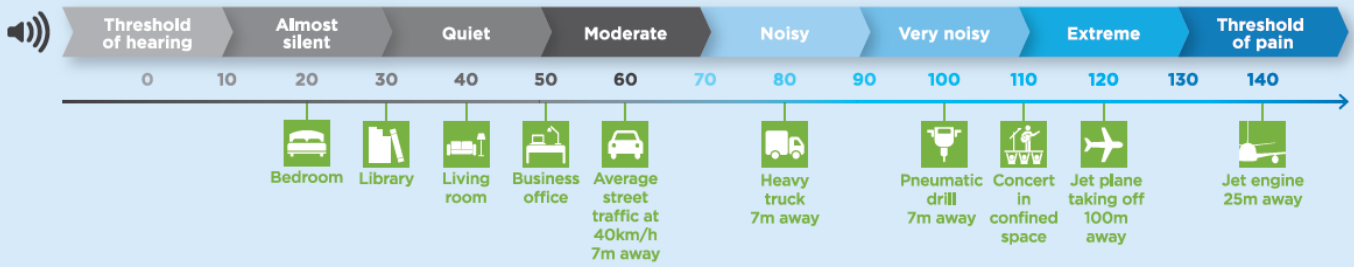
Date	Work Activity	Equipment
Late July	Installing temporary traffic barriers and locating utility services on Lookout Road Expected Duration - One Week	Traffic control, mobile crane, trucks, excavator, sucker truck, lighting towers
Early August	Tree clearing and site access works for watermain underbore on corner of McCaffery Drive and Lookout Road Expected Duration - One Week	Traffic control, trucks, excavators, elevated working platform, chain saw, lighting towers
Mid August	Installing overhead power poles on Lookout Road Expected Duration - One Week	Traffic control, crane borer, trucks, excavator, sucker truck, elevated working platform, lighting towers
Late August	Overhead powerline cut-overs to new poles on Lookout Road & McCaffery Drive Expected Duration - Two Weeks	Traffic control, trucks, excavator, elevated working platforms, lighting towers
September	Trenched utility crossings across Lookout Road and Grandview Drive Expected Duration - Two Weeks	Traffic control, excavator, trucks, sucker trucks, lighting towers, compaction rollers, road saw, asphalt, mobile crane, excavator with rock hammer.
November	Median island removal and pavement infill on Lookout Road Expected Duration - Three Weeks	Traffic control, excavators, trucks, lighting towers, compaction rollers, road saw, asphalt profiler, asphalt paver, concrete agitator trucks.

How will the work affect you?

The work will involve the use of machinery which generates noise, light and vibration. We will make every effort to minimise these impacts by using noise blankets, turning off vehicles when not in use and replacing the reserving signals on vehicles with clickers.

Noise levels will vary between moderate to very noisy, the diagram on the next page provides a guide to the noise you can expect. Directly affected residents will be contacted and advised of the likely impact and what we are doing to minimise disruption during the work.

Sound levels in decibels (approximate)



Traffic changes

There will be some temporary traffic changes to ensure the work zone is safe including a 60km/h speed limit along Lookout Road between McCaffrey Drive and Grandview Road. A 40km/h speed limit will apply during temporary lane closures. Travel times will be affected.

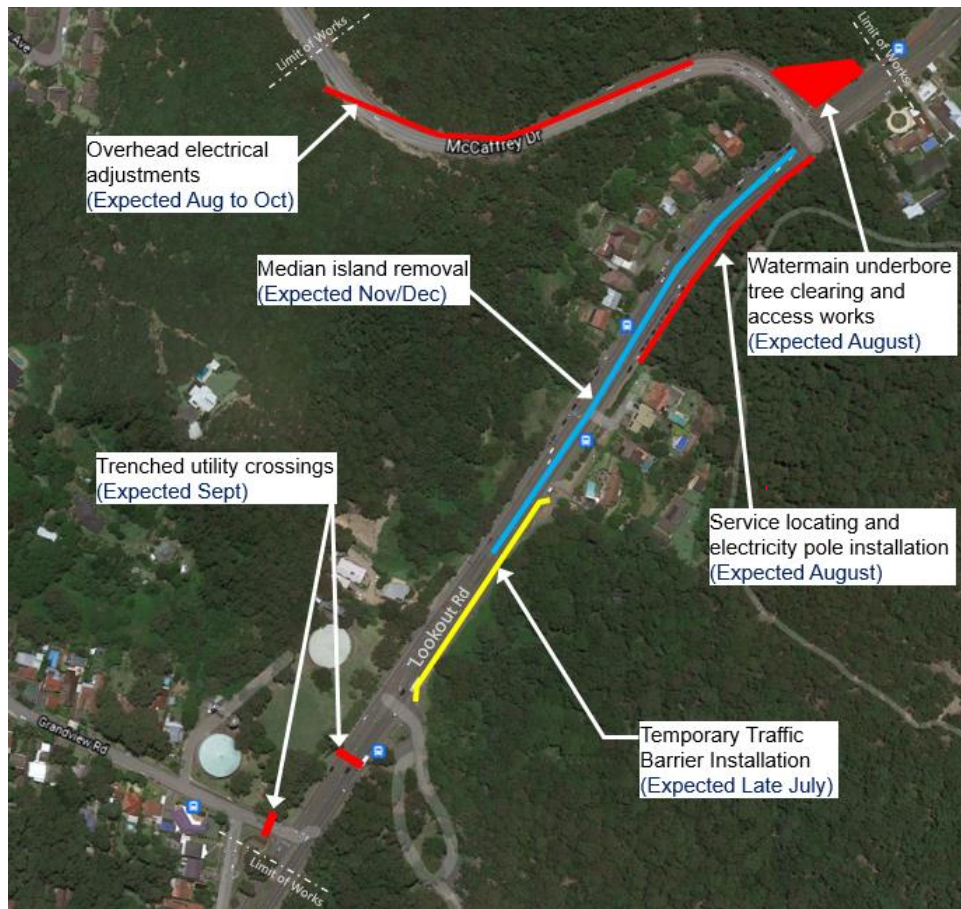
Please keep to speed limits and follow the direction of traffic controllers and signs. For the latest traffic updates, you can call 132 701, visit livetraffic.com or download the Live Traffic NSW App.

Contact

If you would like to provide feedback, or have any questions about this work, please contact our project team on 1800 818 433 (24 hours) or email southern.utilities.RP2J@quickway.com.au

For more information about the Newcastle Inner City Bypass between Rankin Park and Jesmond, visit nswroads.work/rp2j. Thank you for your patience during this important work.

Location of work



131 450

If you need help understanding this information, please contact the Translating and Interpreting Service on 131 450 and ask them to call us on 1800 818 433.