

Newcastle Inner City Bypass

Rankin Park to Jesmond

Have your say – Refined strategic design

The NSW Government is providing \$280 million to build the fifth section of the Newcastle Inner City Bypass between Rankin Park and Jesmond. A refined strategic design has been developed, which includes major improvements for traffic flow and minimises potential environmental and community impacts.

The changes to the 2007 design consider previous community feedback and further technical investigations.

To learn more about the changes and to view the Refined Strategic Design Report visit rms.nsw.gov.au/rp2j

You can also collect a printed project update which includes detailed maps from:

- Service NSW centres at Newcastle, Wallsend and Warners Bay
- Roads and Maritime regional office in Newcastle
- Newcastle City Council and Lake Macquarie City Council.

Drop-in information sessions

Stakeholders and the community are invited to view the plans, meet the project team and find out more about the project:

When: Thursday 19 May 2016, 4pm – 8.30pm
Saturday 21 May 2016, 9am – 12.30pm
Thursday 26 May 2016, 4pm – 8.30pm
Saturday 28 May 2016, 9am – 12.30pm

Where: Stockland Jesmond Shopping Centre
28 Blue Gum Road, Jesmond

Have your say

Feedback on the refined strategic design is invited by **9 June 2016**.

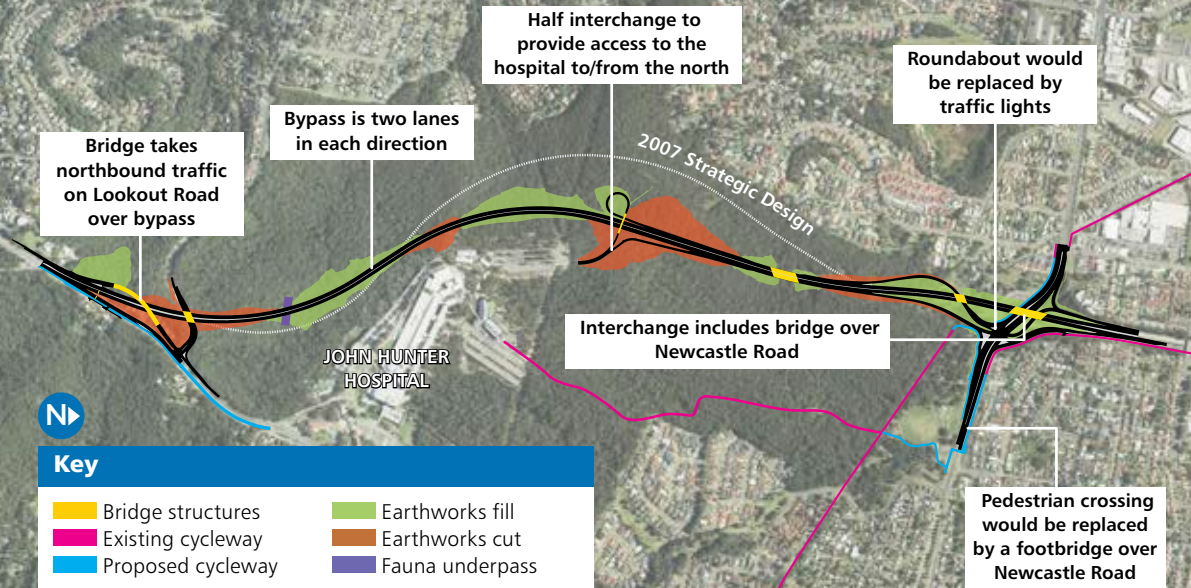
Phone: 1800 818 433 (during business hours)

Email: rp2j.community@aurecongroup.com

Web: rms.nsw.gov.au/rp2j

Mail: Matthew Mate, Project Development Manager,
Roads and Maritime Services
Locked Bag 2030, Newcastle, NSW 2300

Newcastle Inner City Bypass – Rankin Park to Jesmond



FEATURES

- 3.4 kilometres of four lane divided road
- A northern interchange at Newcastle Road
- A southern interchange at Lookout Road
- A half interchange providing access to John Hunter Hospital to/from the north
- Three structures provided along the bypass to improve connectivity in the bushland for people and animals
- Off-road provisions for pedestrians and cyclists including a footbridge over Newcastle Road at Jesmond Park.